

LOG # RF110 *AS*
11/2/96

TARGET # _____

COORD: LAT _____

LONG _____

SKIN & STRINGERS

STA 1700 TO 1760
S 26 TO S 28 RIGHT

DEBRIS FIELD GREEN
E 3298

FRACTURE THRU S 26 ^{LOWER} RIVETS THRU SKIN, SPLICE ^{PLATE}
AND DOOR 4 DOUBLER, STA 1700 TO 1755 AND 1760
FRAME. LOWER FRACTURE IS BELOW S 28

STA 1720 - 1740 @ MILLED STEP SIMILARLY
1700 - 1720 & 1740 - 1760 BELOW S 27.

OVAL PUNCTURE BETWEEN S 27 & S 28, STA 1727,
TOP 1.5 INCHES OF BOTH FLAT SIDES EXHIBIT SHARP
TOOTH FRACTURE FACE.

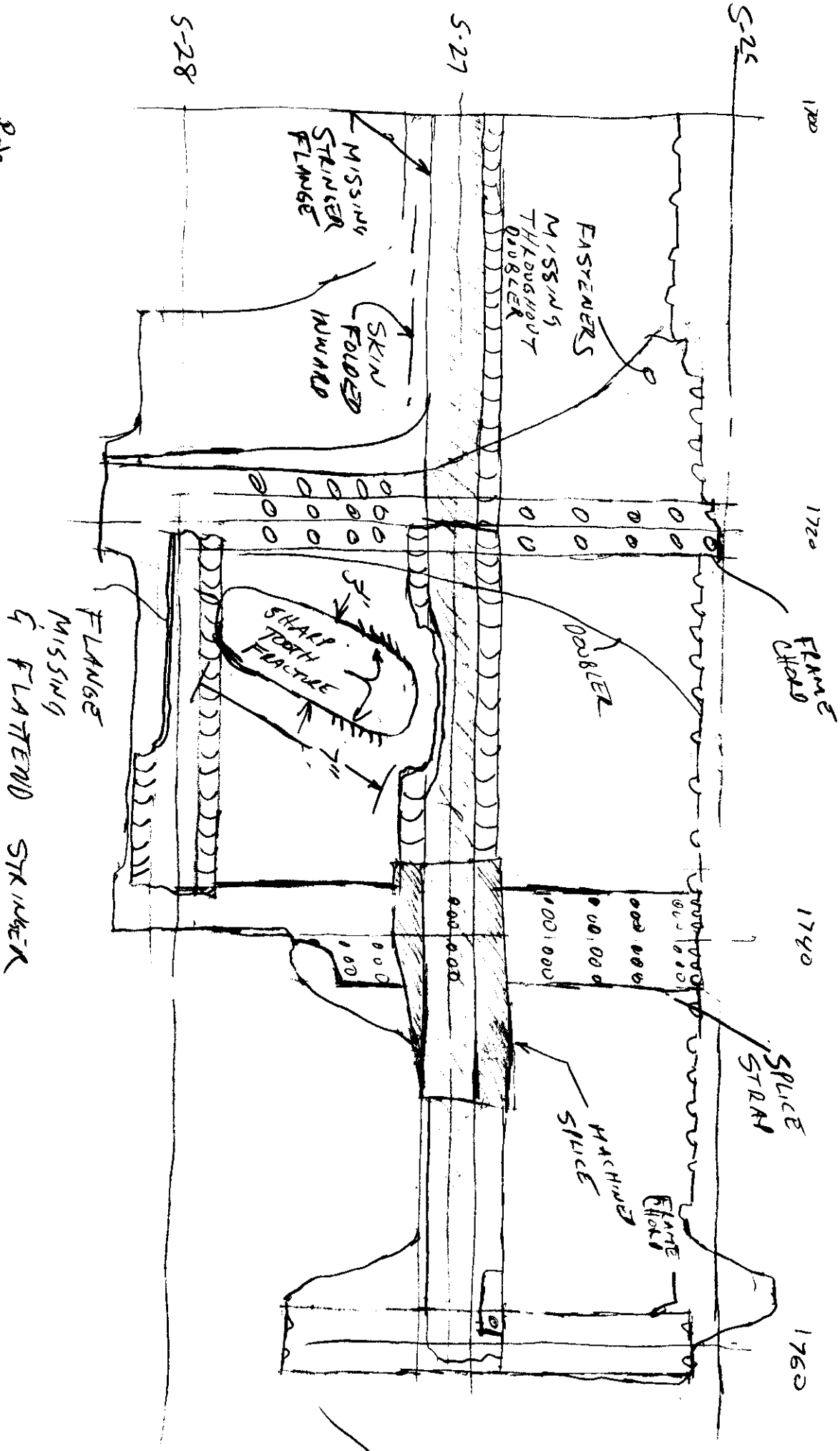
Barry Smith
BOEING 10/24/96

REFER TO METALLURGY NOTES SPIKE TOOTH LOCATION

McKinney
TWA 10-12-96

Tom Todaro
FAA 10-24-96

Tom Toland
FAA 10-24-96



RF 110

3