

LOG # RF 109 RF 109 4/4

TARGET # \_\_\_\_\_

COORD: LAT \_\_\_\_\_

LONG \_\_\_\_\_

ASSORTED SKINS STA 1580 TO 1680  
\$ 28 TO \$ 40

DEBRIS FIELD GREEN  
TAG REF TO C 112

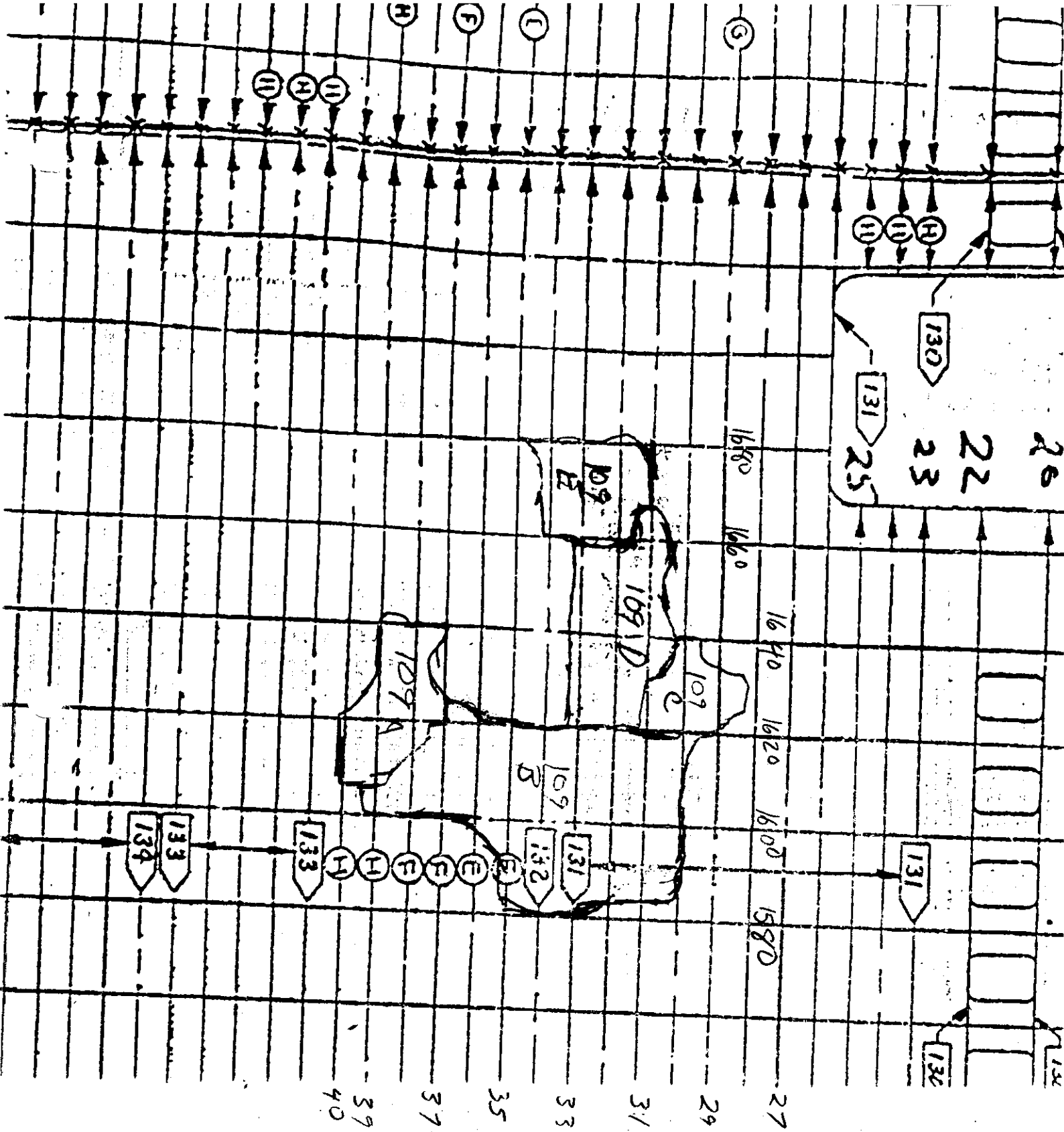
NO WRITE UP, SAME BASIC  
FRACTURES AS RF 53

B SMITH BOEING  
10/8/96  
*[Signature]*  
10/21

REFER FIRE AND EXPLOSION GROUP NOTES FOR FIRE DAMAGE

*[Handwritten note]*  
DMS  
TWA 10-24-96

Stephen F. Klapachin  
FAA 10-24-96



Stephen F. Kupchak Sr.  
FAN 10-24-76

3