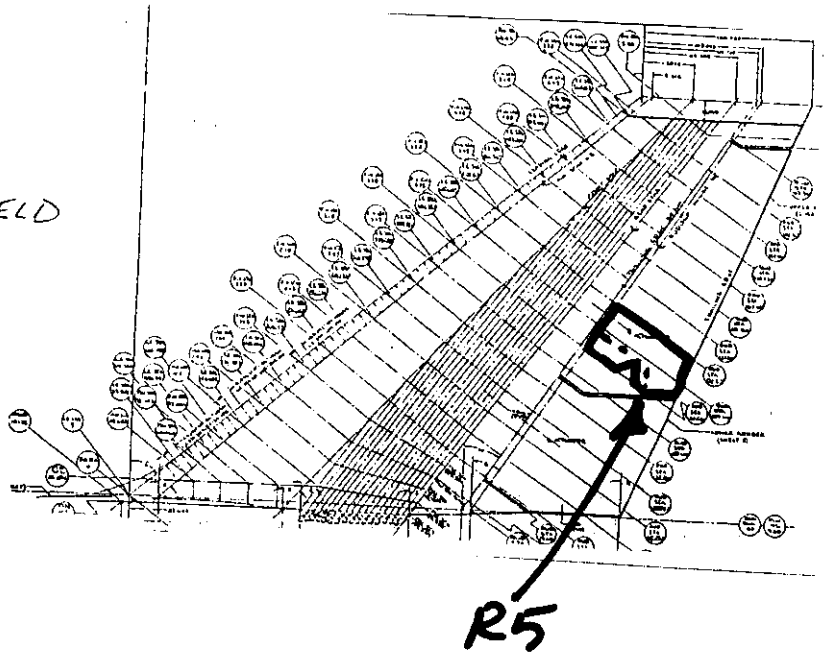


# RUDDER R5

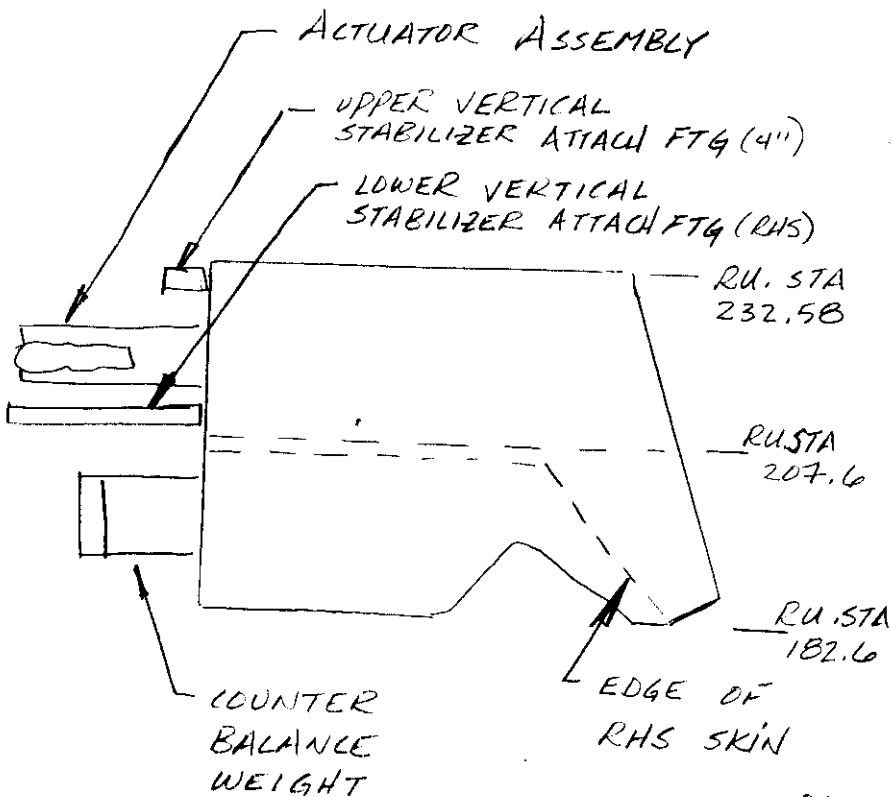
LOC'N = GREEN DEBRIS FIELD  
TAG # Z1709

FBI # 10/8/96-1



UPPER RUDDER SECTION MEASURING APPROX 46" x 7'6" FROM RUDDER STA. 182 TO 232 FROM LEADING EDGE TO TRAILING EDGE. UPPER VERTICAL STABILIZER ATTACH FITTING FAILED APPROX. 4" FROM PINOT. LOWER VERTICAL STABILIZER ATTACH FITTING RIGHT HALF REMAINS ATTACHED TO THIS PART AND NOT TO THE VERTICAL STABILIZER. ACTUATOR ASSEMBLY AND COUNTER BALANCE WEIGHT ATTACHED TO LEADING EDGE. OUTER SKIN PANELS HAVE CRACKING, PUNCTURES & MINOR SURFACE ABRASIONS

THERE ARE NO OBVIOUS SIGNS OF SOOT NOR FIRE DAMAGE.  
THIS PART MATES WITH R3



*[Signature]* 12-16-96  
TWA

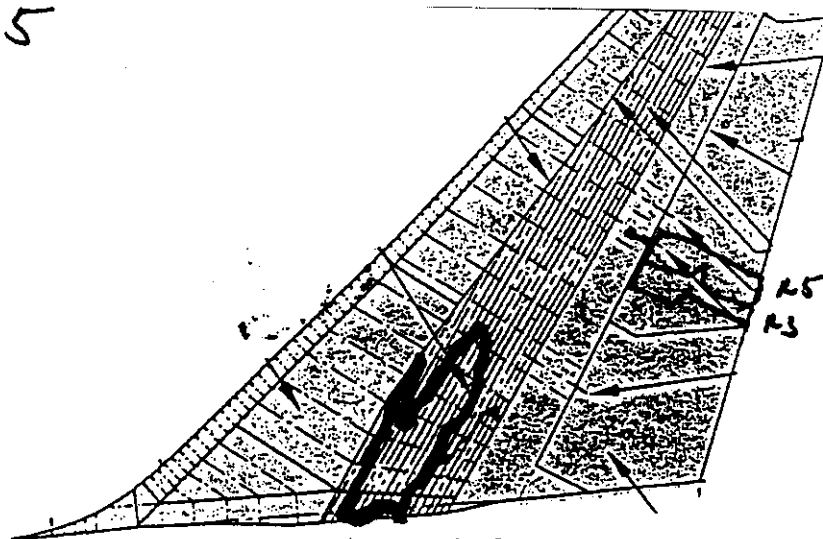
Stephen F. Klopach 74 FMA  
01-10-97

Dennis Louiag I AM  
12-16-96

*[Signature]* ALPA  
12-13-96

*[Signature]* TBC  
12/13/96

R 3 & R 5

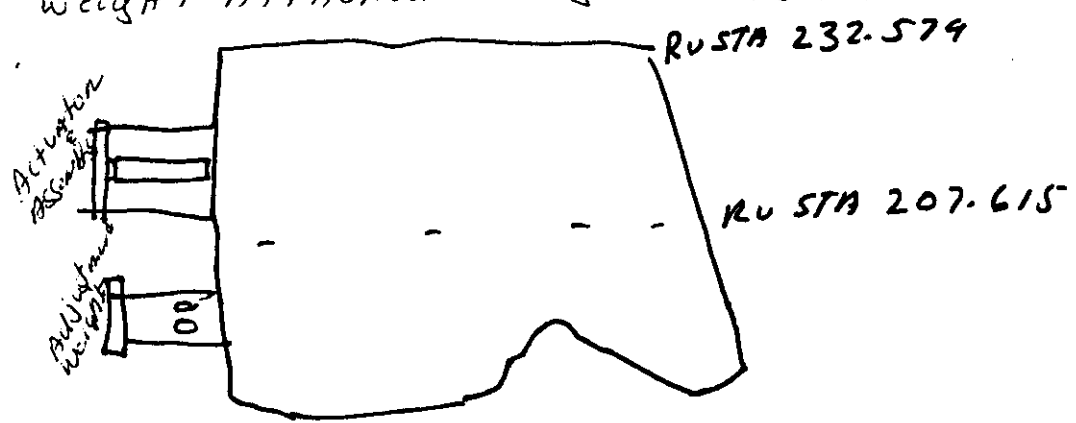


R-3 - Float BLUE TAG # E2033

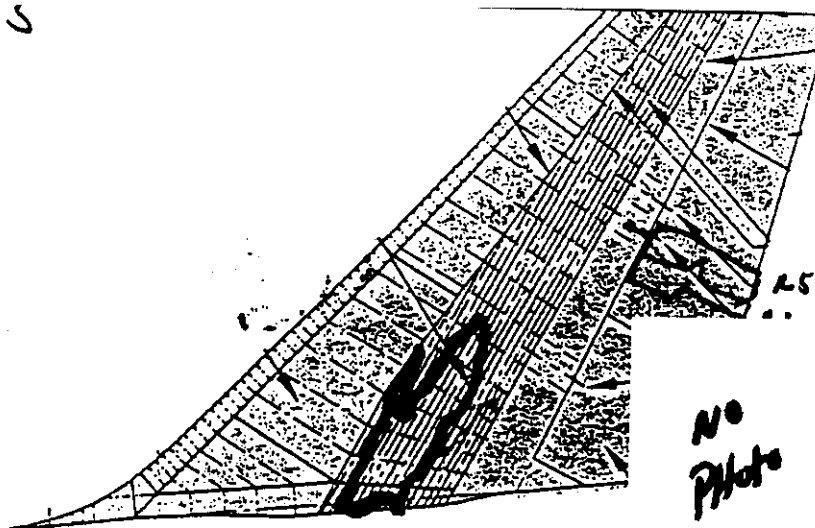
R-3 upper Rudder section measures approximately 35" x 6' EN compasses RU STA - 182.651 & RU STA 157.686 L/H side HAS TWO sections of Honey comb MISSING The rest of The Honey comb Area is CRACKED



R 5 upper Rudder section measures approximately 46" x 7' 6" & EN compasses RU STA 232.574 & RU 207.615 IT ALSO HAS Actuator & Assembly & one Adjustment weight Attached. Honey Comb is FAIR condition.



Stephen F. Klapach JR FAN  
11-27-96

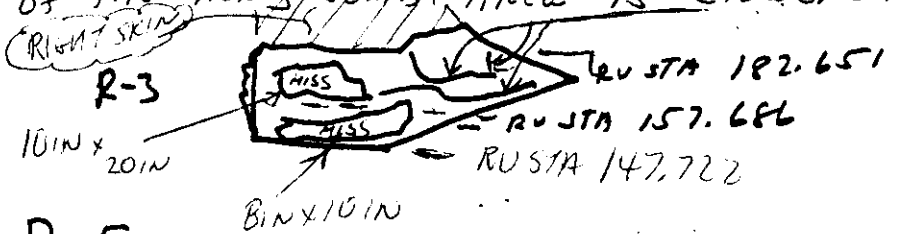


NO PHOTO

R-3 - Float

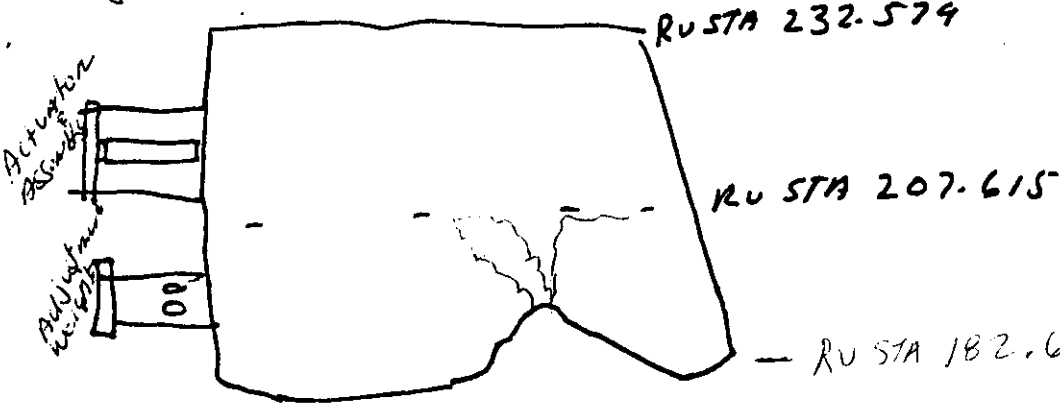
R-3 upper Rudder section measures approximately 35' x 8' EN compasses RU STA - <sup>206</sup>182.651 & RU STA 147.686

L/H side HAS TWO sections of Honey comb MISSING The rest of The Honey comb Area IS CRACKED, HINGE FITTING INTACT.



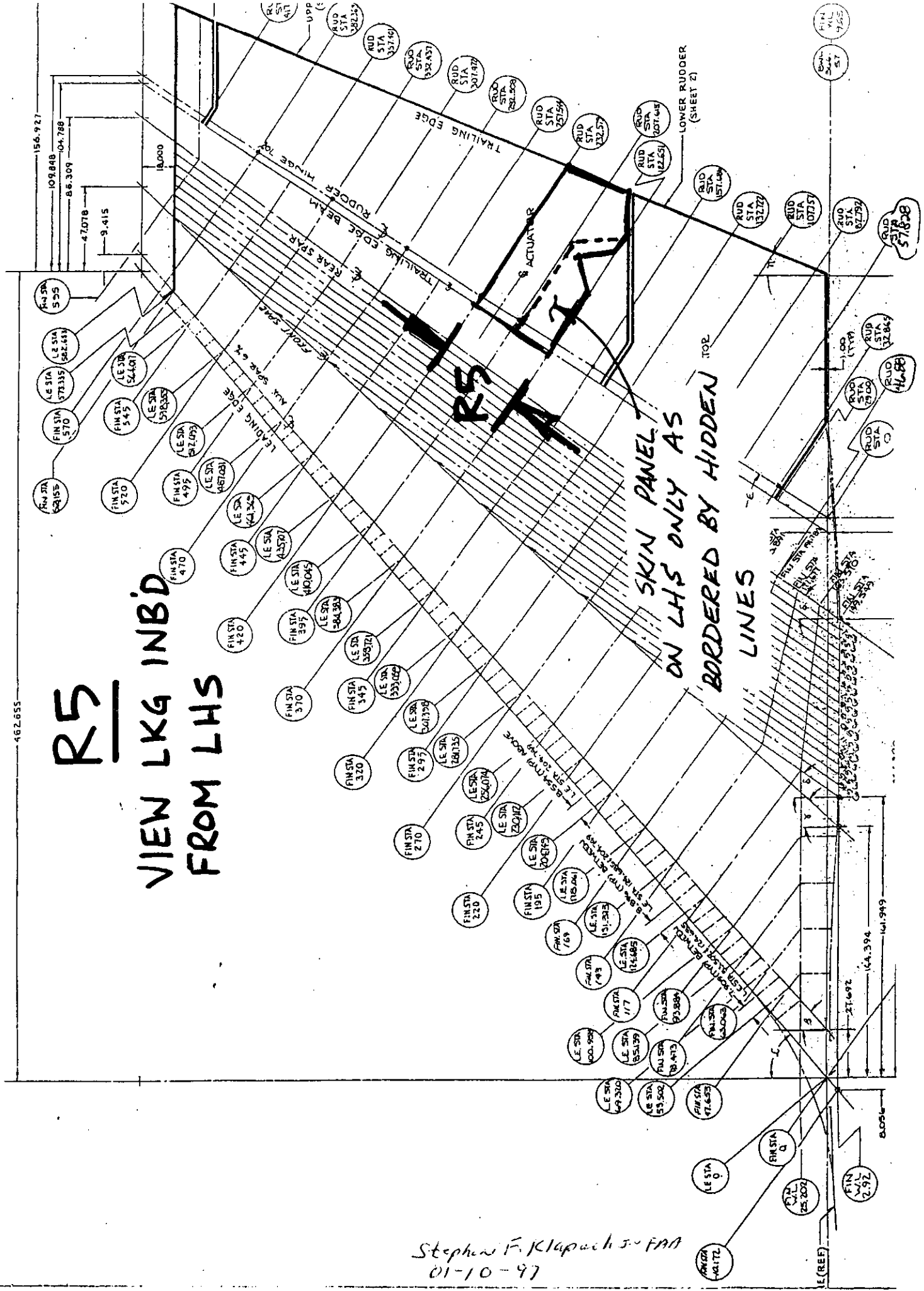
R 5 upper Rudder section measures approximately 46" x 7' 6" & EN compasses RU STA 232,574 & RU <sup>182.651</sup>207.615

IT ALSO HAS Actuator & Assembly & one Adjustment weight Attached. Honey Comb is FAIR condition.



Stephen F. Klapach JR I-AD  
11-27-96

**R5**  
**VIEW LKG INBD**  
**FROM LHS**



Stephen F. Klupach - FAN  
 01-10-97