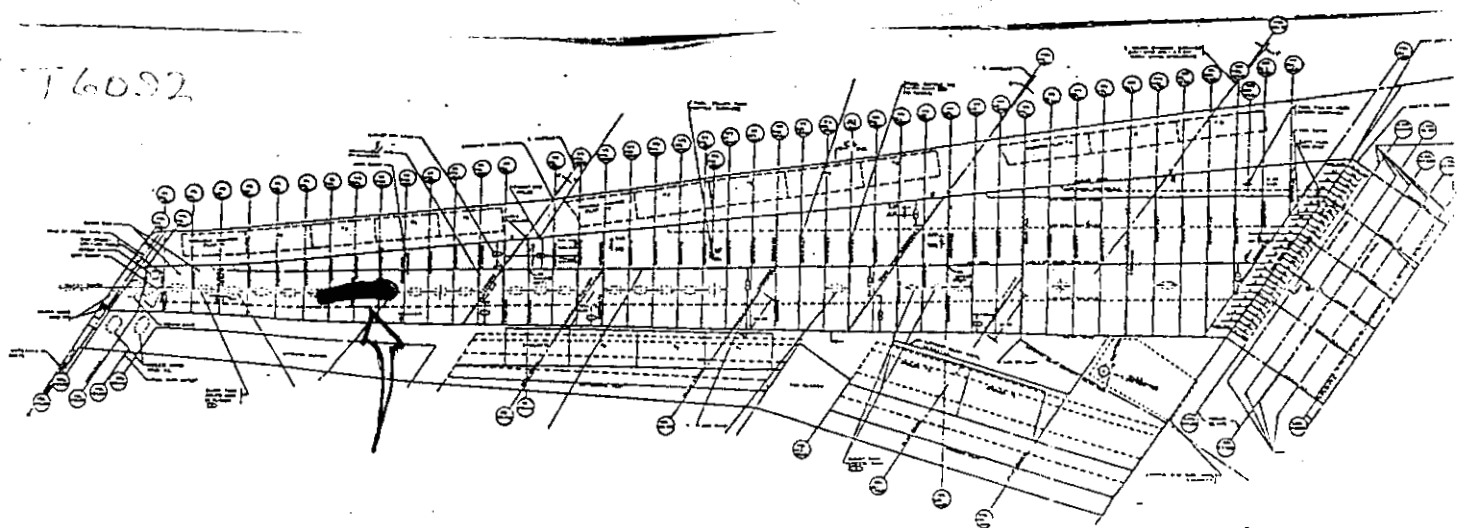


K. DEAN  
11.17.96

# LEFT WING (LWSI)

T6092



LOG# T6092

COORDS: LAT \_\_\_\_\_

TARGET# \_\_\_\_\_

LONG \_\_\_\_\_

DEBRIS FIELD GREEN.

LEFT WING UPPER WING SKIN SECTION OF APPROXIMATE SIZE OF 92 INCHES BY 27 INCHES LOCATED JUST OUTBOARD OF THE FUEL TANK END RIB.

THE SECTION EXTENDS FROM WS 1300 TO WS 1392 AND ENCOMPASSES A WIDTH FROM STR 7 TO STRINGER 12. ALL STRINGERS WERE MISSING EXCEPT FOR A 10 INCH REMNANT ALONG STRINGER 8 <sup>ADJACENT</sup> TO WS 1336 RIB.

A PARTIAL CRACK EXTENDS ACROSS THE PANEL FROM STRINGER 9 THRU 11 AS A RESULT OF OUT OF PLANE BENDING. THE PANEL IS DEFORMED ALONG THE SPANWISE LENGTH INTO A GRADUAL RADIUS OF CURVATURE OF APPROX 30" INCHES WITH THE OUTER SURFACE IN COMPRESSION.

THE PANEL FINISH IS PRIMARILY INTACT EXCEPT FOR NUMEROUS AREA'S OF ABRASION AND SCUFFING. SOME MINOR SCUFFING ALONG THE FRACTURE FACES OCCURRED, ALTHOUGH THE SECTION IS FREE OF FIRE AND IMPACT DAMAGE.

ALL FRACTURES ARE THE RESULT OF RAPID DUCTILE SEPARATION.

Dennis L. Thompson  
4-7-97

4AR <sup>copy</sup> ALPA  
4/9/97

Tom Rodino  
FMA 4-11-97

LW 51

LEFT HAND UPPER SKIN (WING)

WS 1392

WS 1364

WS 1336

WS 1308

WS 1280

STR 11

STR 8

DUCTILE CRACK

DUCTILE FRACTURE

VENT STR

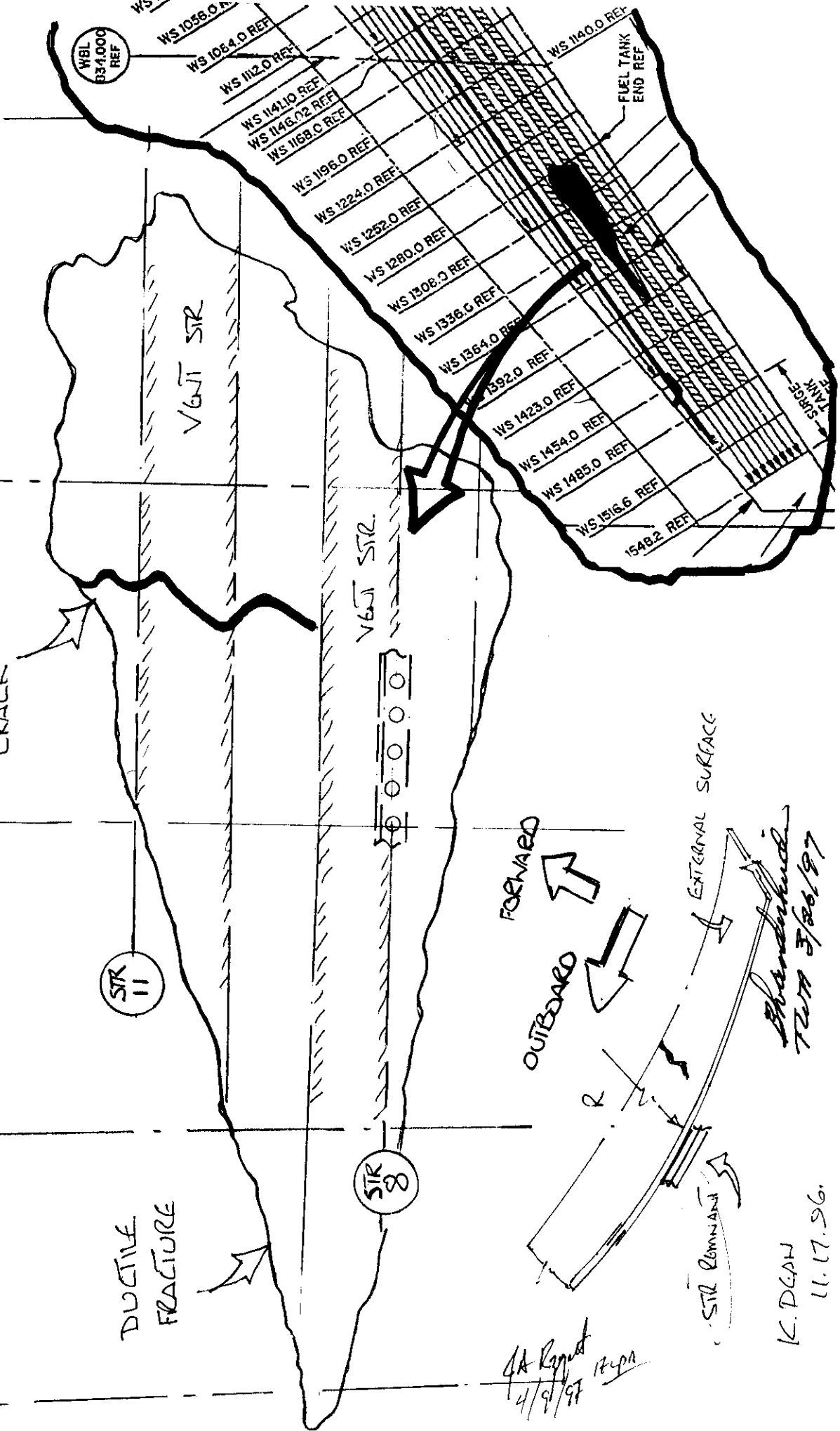
VENT STR

FORWARD

OUTBOARD

EXTERNAL SURFACE

STR COMMAND



GA Report  
4/9/97  
174PA

Shandankud  
TWA 3/26/97

K. D. GAW  
11.17.96