

SEE ADDITIONAL COMMENTS

LW-46 Z3123

Pg 1 of 3

(9-10-96-4) GREEN TAG

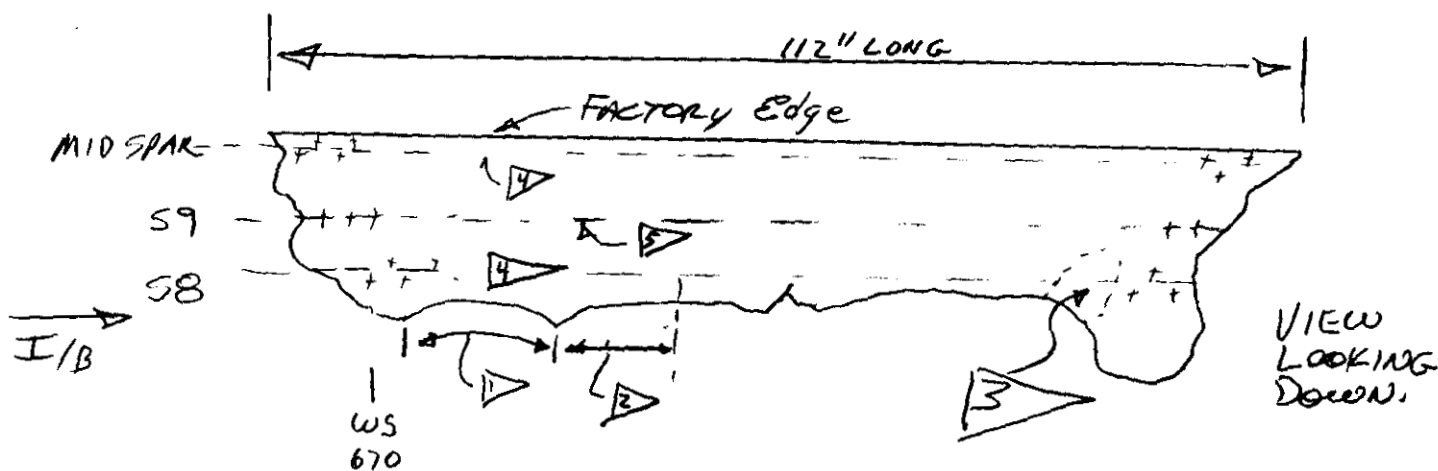
LEFT WING LOWER SURFACE

WS 670 TO 557, MID SPAR TO STRINGER 8.

EXTERIOR OF PART HEAVILY SOOTED EXCEPT IN REGION 3

FRACTURE SURFACES VARY BETWEEN JAGGED, AND ANGLED.

FRACTURE SURFACES DARKENED. VISUAL INSPECTIONS NOT CONCLUSIVE OF SOOT



- 1 ▷ FACTORY Edge OF ACCESS PANEL CUT-OUT
- 2 ▷ UNIQUE FRACTURE FACES MATCH FRACTURES ON LW2
- 3 ▷ UN-SOOTED REGION CONSISTENT WITH FLAP UNDERWING FAIRING (EXTERIOR SIDE)

4 ▷ MID SPAN AND 58 MOSTLY MISSING, Hole Elongation SPANWISE DIRECTION $\pm 45^\circ$

5 ▷ FASTENERS MOSTLY IN PLACE, sheared off flush w/surface

6 ▷

SD GREEN - MPA
 10/13/96 - JAM
 10/13/96 - TWA
 10/13/96

- NFB
 SPANWISE KEYHOLE FRACTURE
 PAN 10 25-96

L Thomson, 10-2-96 - BCF

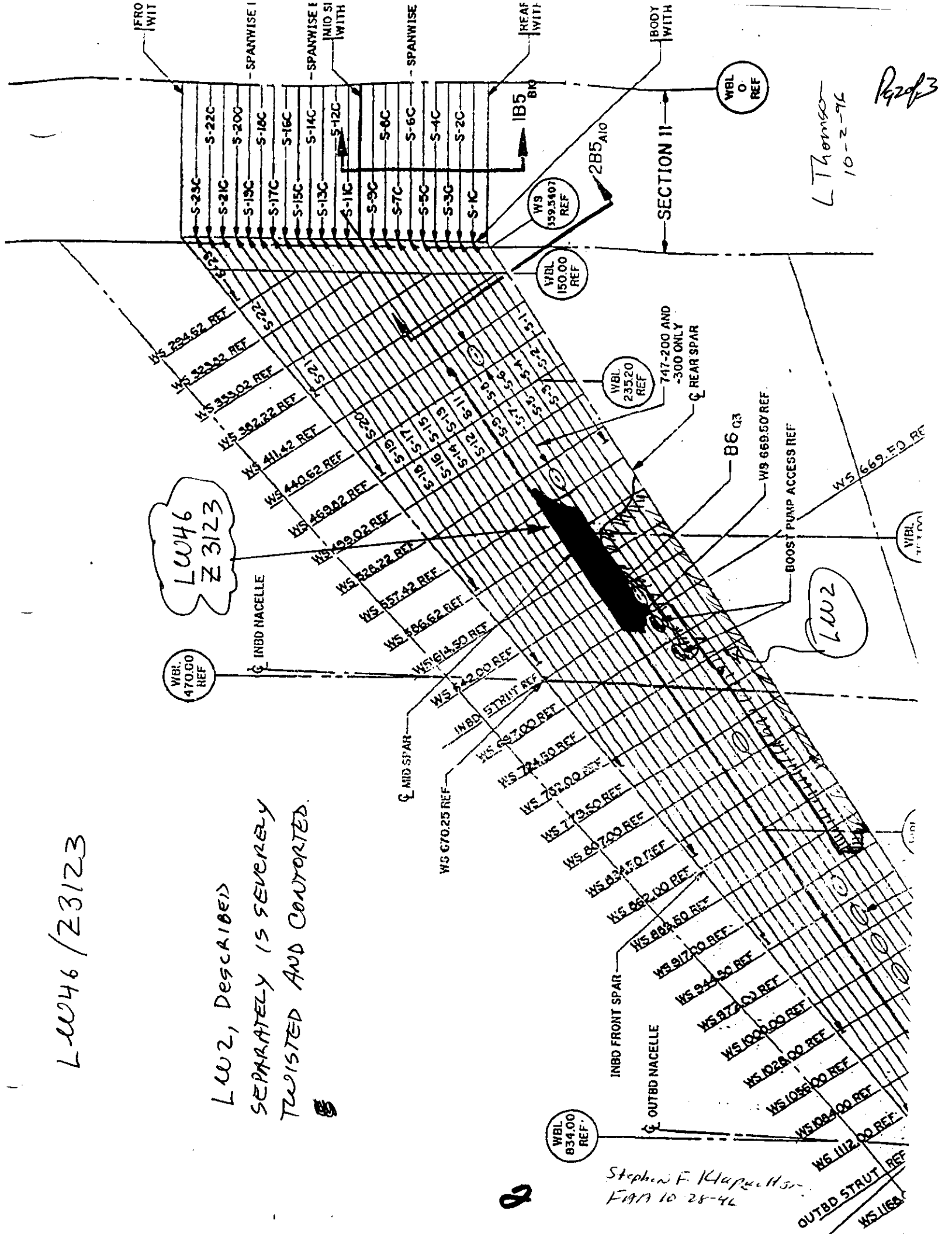
LW46 / Z3123

LW2, DESCRIBED SEPARATELY IS SEVERELY TWISTED AND CONVORTED.

LW46
Z3123

LW2

LThomson
10-2-76
Pg 2 of 3



Stephen F. Kupel...
FAR 10-28-76

Pg 3 of 5

LW 46 Additional Comments

1. Chordwise shear tie bolts at approximately WS 600 remain in place. Shear ties are partially to mostly missing. Bolts exhibit no bending, ~~tho~~ ~~tension failure of shear tie attachment.~~

SD GREEN ALPA

11-17-96

~~SD~~ - ALPA
12-6-96

~~Time~~
TWA 12-6-96

D. Pitts
BOEING 6 DEC 96

Tom Todman
FAA 12-6-96

Dennis Santiago
IAM 12-6-96