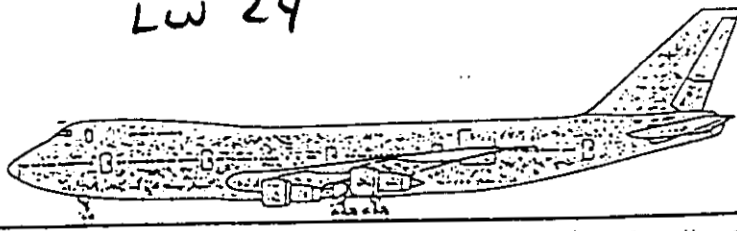


LW 24



LOG # ~~31~~ LW 24

TARGET # LOT 31

COORD: LAT

TAG # E2005 LONG

LW 24

DEBRIS FIELD

#6 GROUND SPOILER AND ACTUATOR

LENGTH 5ft LONG - 2ft WIDE PART IS VERY SOOTY AND TORN. ACTUATOR IS STILL ATTACHED BUT HYDRAULIC LINES ARE CUT OFF. THE SWIVEL IS STILL ATTACHED AT ONE POINT AND THE LINKAGE RODS ARE BENTEN & FRACTURED

RED TAG IDENTIFIES

POSITION AS LOT 31 - M22 Sys

THE HONEY COME IS EXPOSED ON THE LOWER & UPPER SIDES OF SPOILER -

SDGREEN - ALPA

11-7-96
Shantago - IAM

Therby 10/13/96 TWA

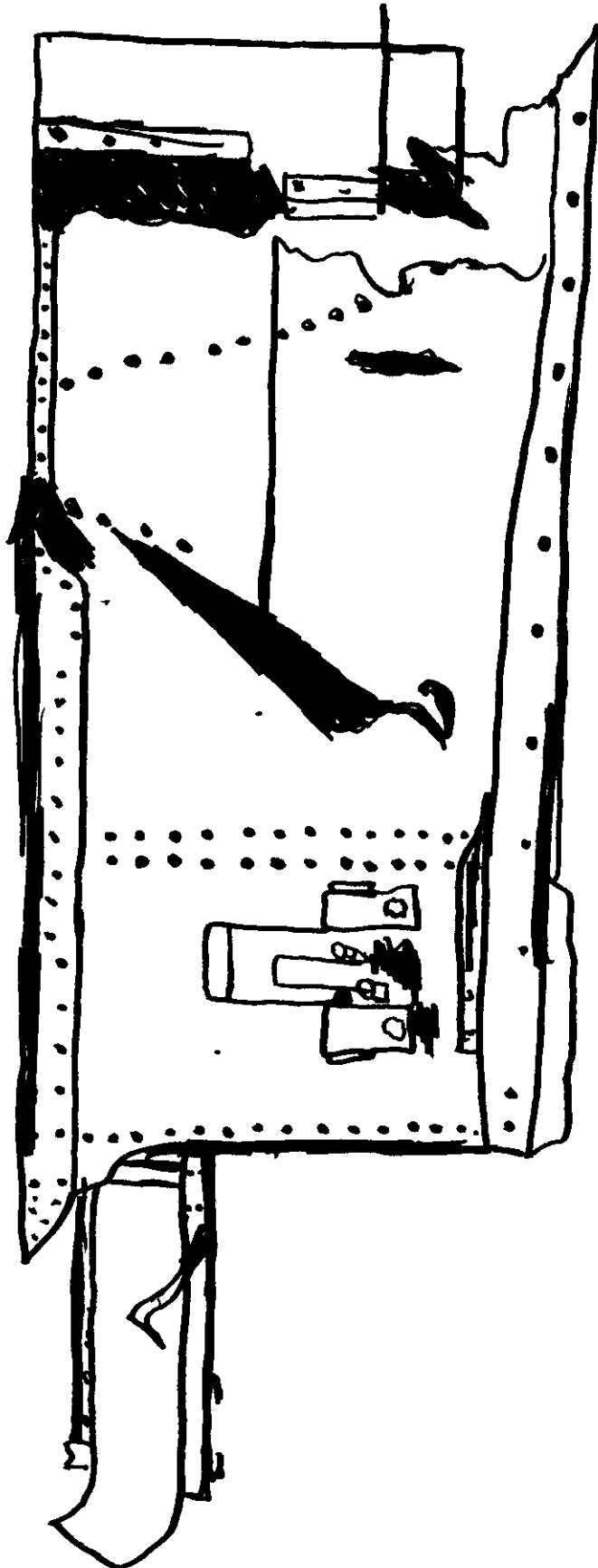
R. [Signature] 10/19 - BOEING

P.A. MAROTTE -

FAA

- NTSB

Stephen F. Kluge
FAA 10-28-96



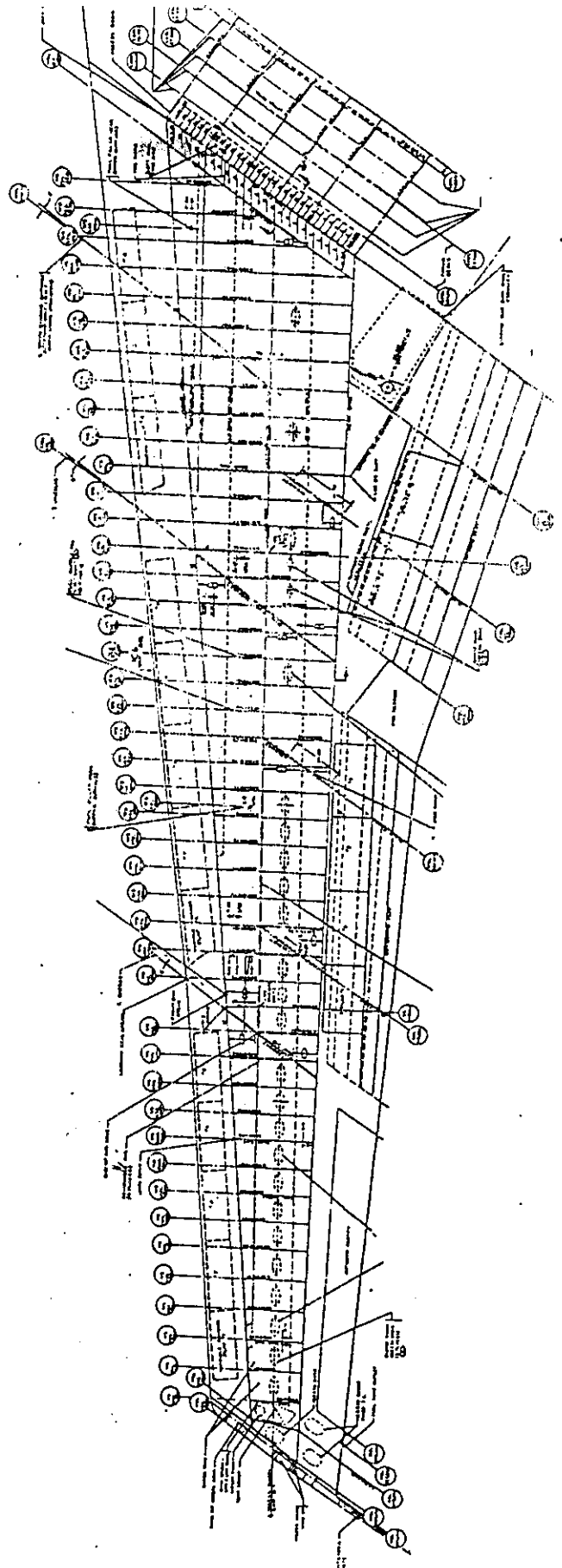
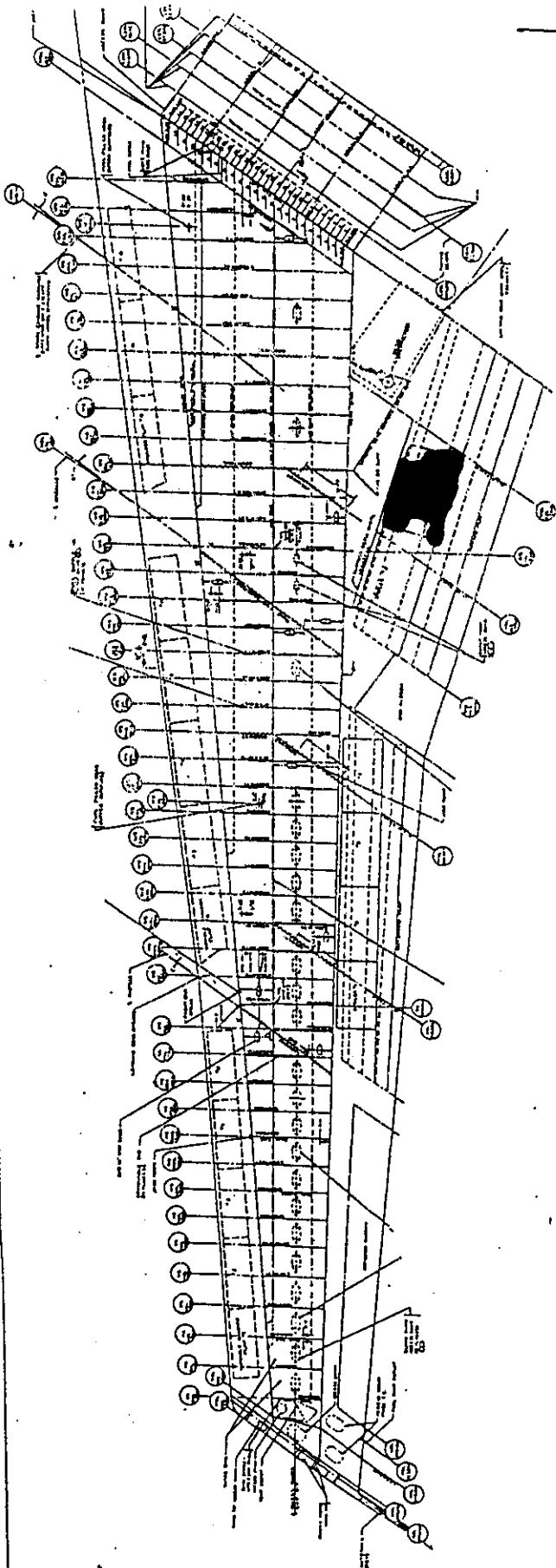
#6 Crown Splicer & Actuator

LW # 24

TARGET POSITION 31

mass sys.

LEFT WING LW 24



Stephen F. Klappach Jr.
FAA 10 28 46