

See Additional Comments



LOG # 121

TARGET # 008

COORD: LAT

LONG

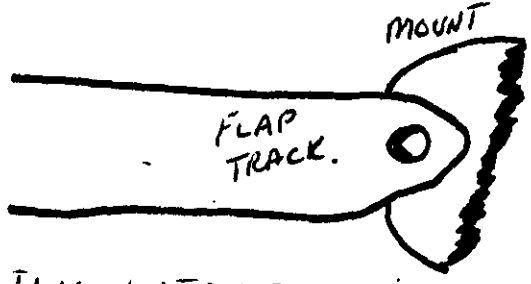
Paloff

### #4 FLAP TRACK ASSY.

DEBRIS FIELD GREEN COOB

REFER FIRE AND EXPLOSION GROUP NOTES FOR FIRE DAMAGE

LEFT SIDE INBOARD FLAP TRACK AND CARRIAGE ASSY #4 FLAP POSITION. THE FRONT FLAP TRACK MOUNT SEPERATED FROM THE WING UNDER SIDE (MOUNT IS FRACTURED)



CARRIAGE IS MOSTLY INTACT WITH THE EXCEPTION OF THE CONNECTING RODS AND LINKAGE. WHICH ARE BROKEN AND OR FRACTURED.

THE MID FLAP. IS PARTIALLY CONNECTED AND THE UPPER SURFACE INBOARD SIDE IS DELAMINATED ~~AT~~ AT THE TRAILING EDGE OF THIS SECTION. THE FLAP IS SEVERED AT THE INBOARD & OUTBOARD LOCATIONS (EDGES) THIS ASSY MEASURES APPROX 16 FT. LONG WITH NO SIGNS OF SOOTING.

THE TRAILING EDGE FLAP IS STILL CONNECTED TO THE ~~THE~~ MID FLAP. BY THE FLAP CONNECTORS. THE TRAILING EDGE FLAP IS CONNECTED AT 2 POINTS AND HAS A BREAK-SEPERATION IN THE CENTER MAILING IT 2 PIECES

W. H. G. R. P. A.

D. Santiago 11/5/96 - JIM

R. H. H. - TWA  
10/9 - BOEING

P. A. MAROTT

FAA

- NTSB  
Public 10-28-96 - FAA

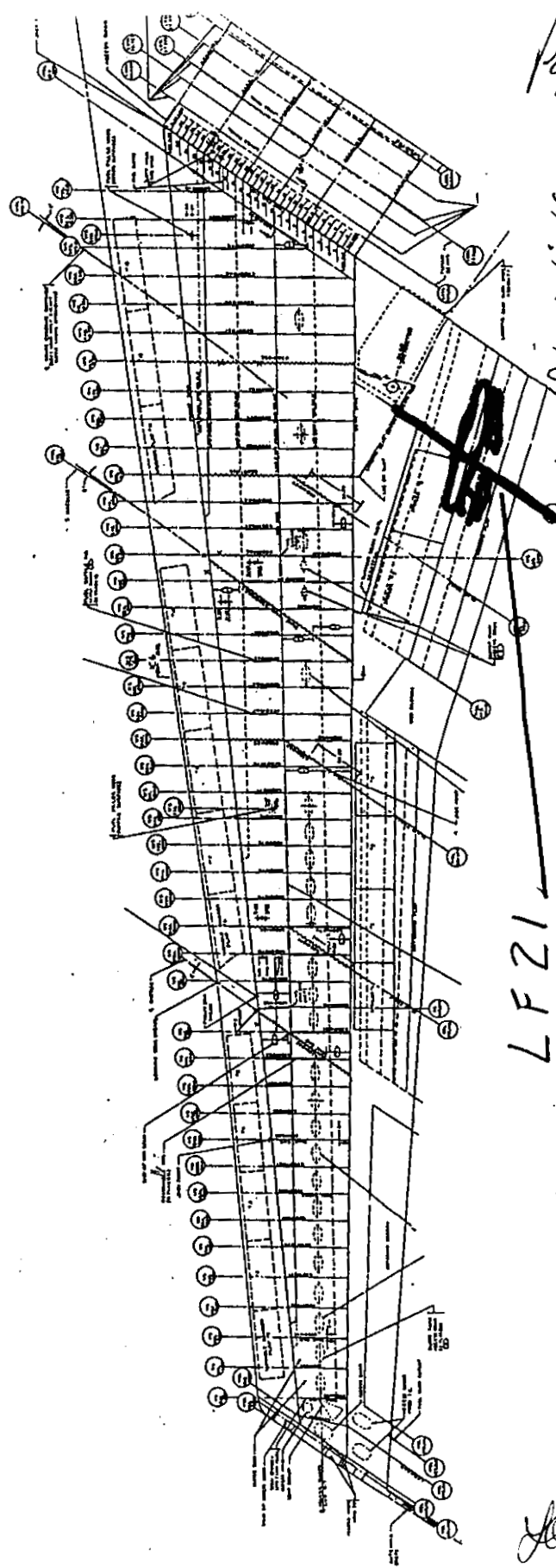
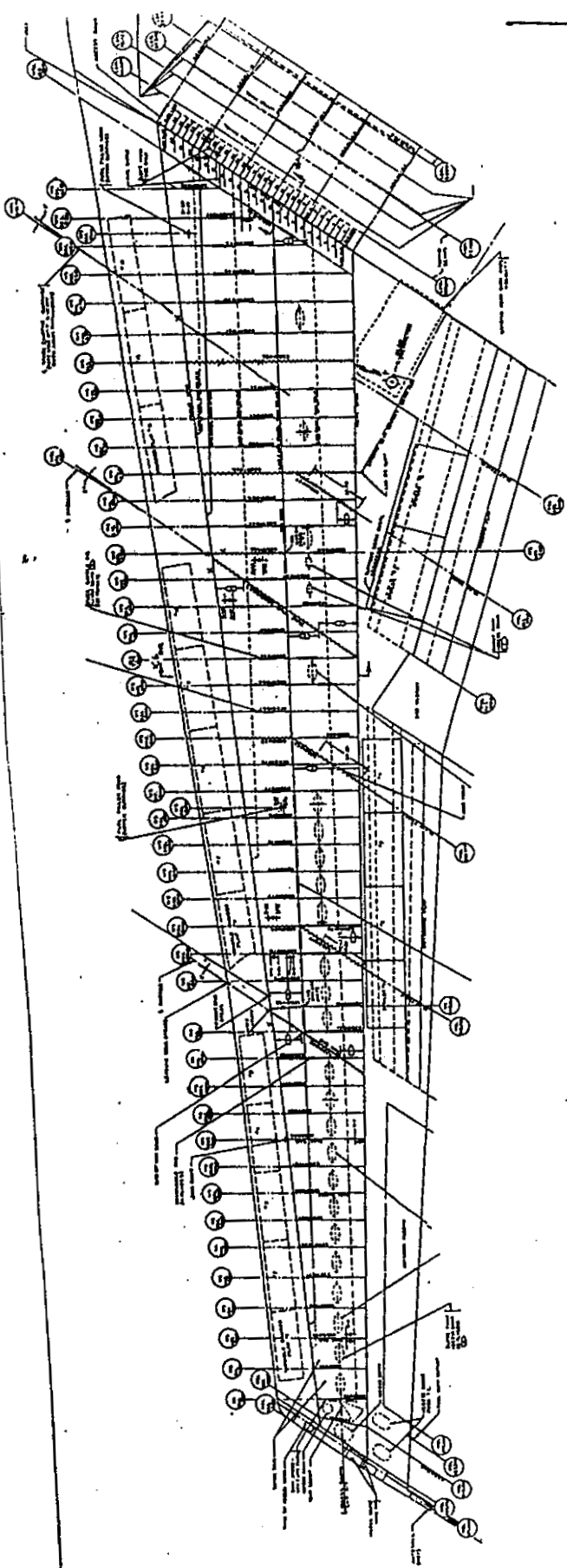
FLAP. SECTION

LW-21  
TARGET # 008.



Pg 2 of 4

Scappellato FAH  
10.28.96



Pg 3 of 4

Left Wing  
#4 FLAP/TRACK ASSY.

LFZ1  
(GREEN)  
TARGET #008.

Joe. Miller  
10-28-96

3

ADDITIONAL COMMENTS


Page 4 of 4


LW-21

R.T. STETTNER

11-12-96

- 1) F+E GROUP NOTES SHOW THIS PIECE TO  
BE MODERATELY SOOTED

 - AAA  
12-6-96

  
TWA 12-6-96

Dennis Santiago IAM  
12-6-96

Tom Todaro  
FAA 12-6-96

  
BOEING 6 DEC 96