

BS 1480 Bulkhead Assembly
Approximately LBL 8 to LBL 75

Log Number LF92

Debris Field Green

Target Number C104 LG-3 No.

Coordinates:

Latitude _____

Longitude _____

New Tag. No. 15. GIVES. = C-2468
BECAUSE THIS PIECE WAS RE-
FROM LG-3.



Body gear trunnion fittings 65B11782 and 65B10462 are attached to the body gear assembly, see LG3, and a portion of 65B10005 web as shown on attached illustration.

Inboard trunnion fitting has two rods located at the upper end which are attached to the trunnion fittings. The outboard rod end not connected to the trunnion fitting contains a small portion of structure or linkage that failed. The inboard rod failed approximately 1.5 inches from trunnion attach location.



Horizontal stiffeners located on the aft side of web have torn away at the radius and departed. A segment, the same width as each trunnion fitting, of horizontal web assembly 65B01865-6 is attached at each trunnion fitting.

Various types and lengths of wiring and conduits are attached ~~twelve inches above S45R and S46R.~~ TO LG3 RN 3/24/97 TBC JWA 3/24/97

Structure has minor surface abrasions at random locations through paint layer. Primer remains. No visible indication of soot.

Segment of Horizontal beam attached on aft side @ WL116. JWA 3/24/97 RN 3/24/97 TBC



"LF92" CREATED 2-26-97, removed from "LG3", hung on mockup at FS 1480 Bulkhead. See attached roadmaps.



SEE LF149

Dennis Santiago IAM
3-24-97

Tom Todman
FMA 3/20/97
Shandorhidm TWA 3/19/97

Veih D. Johnson - ALPA
19 Mar 97

R. Hanauer 3/24/97 Boeing

The Author of This is
Dan Reple of TWA

BS14BD BULKHEAD
LBL B TO LBL 75
GREEN TAG C-104
LF 92

- 65B10535-1
- 65B10535-2 OPP
- 65B10535-7
- 65B10535-8 OPP
- 65B10535-11
- 65B10535-12 OPP
- 65B10535-25
- 65B10535-26 OPP
- 65B10535-37
- 65B10535-38 OPP

SHEET

SEE
LG 3

(SEE LF-151)
FOR DOCUMENTATION

SH628-5003 AND -5004
SH6-5001 AND -5002 IN

LF 92

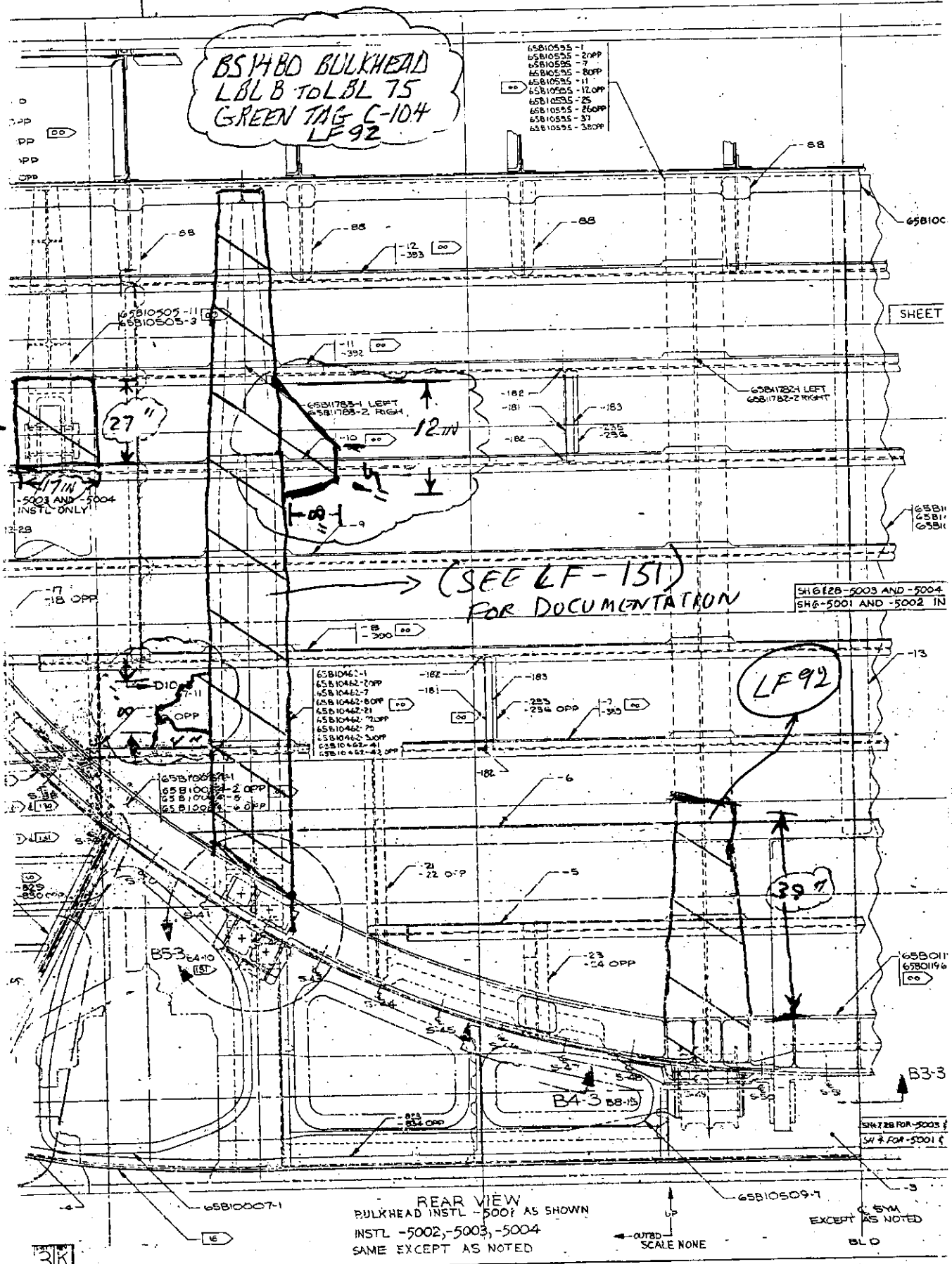
65B011
65B0196

SH628 FOR -5003
SH 6 FOR -5001 &

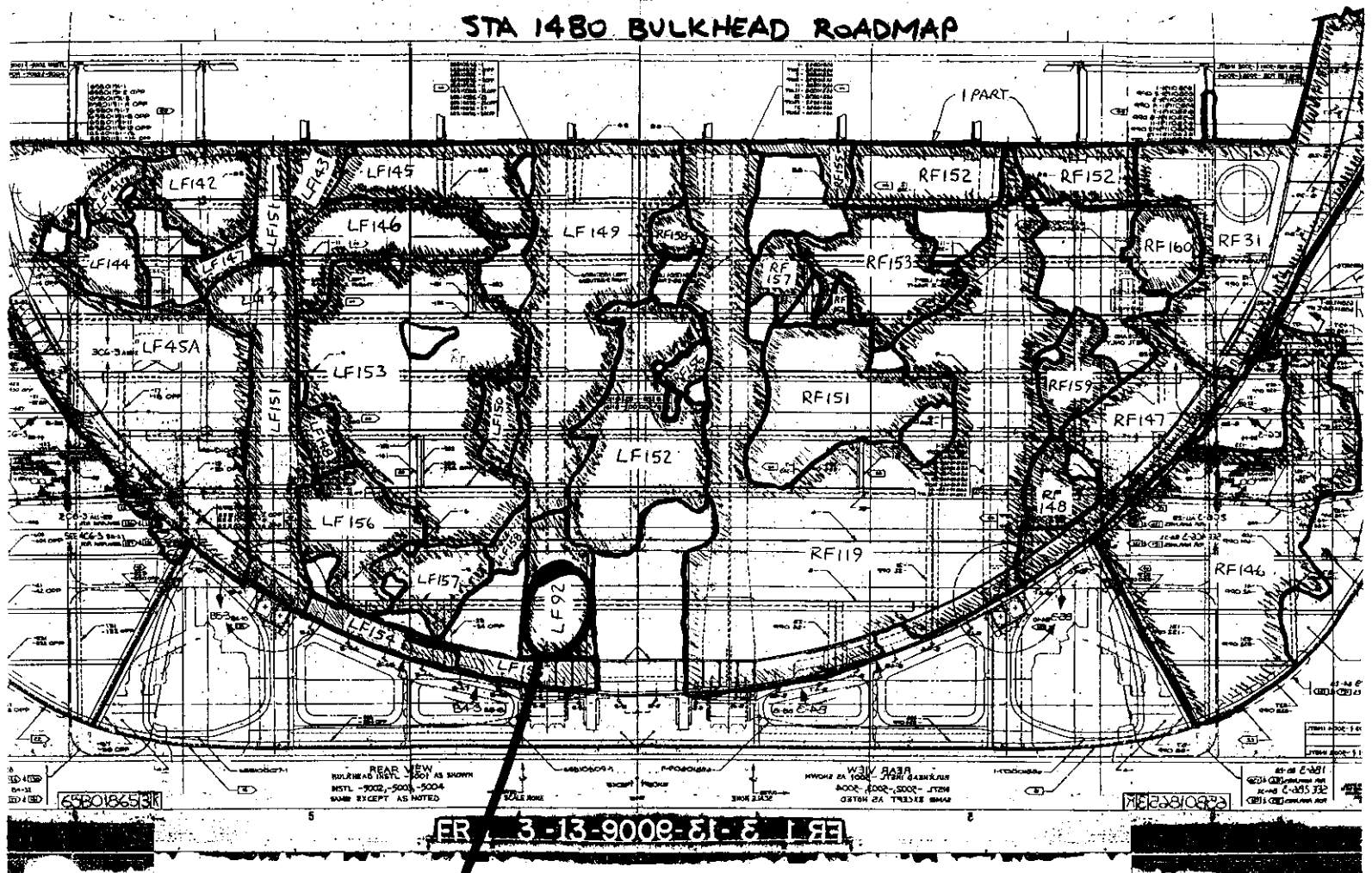
REAR VIEW
BULKHEAD INSTL -5007 AS SHOWN
INSTL -5002,-5003,-5004
SAME EXCEPT AS NOTED

UP
← OUTBD
SCALE NONE
EXCEPT AS NOTED
BLD

3R



STA 1480 BULKHEAD ROADMAP



LOG#
LF92