

TARGET #
 A 8-3-96-145
 B B2066
 C B2051
 D B2052
 E B254
 F B264

REFER METALLURGY GROUP NOTES

LOG # LFB ^{A-R RTS 10/1/96} 506

TARGET # _____

COORD: LAT 40 39 03

LONG 72 38 32

DEBRIS FIELD #2

STA 140 BLKHD, UPPER PORTION (A)

Web and beam structure from approx WL 246 and above. See sketch on next page for depiction of structure. In general, the webs (0.040t) are still flat except where the folding is noted. Horizontal beam at WL 256 is very straight. Next beam down is bent as shown.

Most of outer attach angle (for web-to-skin) is removed. Many of the outer row of staggered fasteners are sheared out and inbd row is elongated. No obvious evidence of an over pressure. No obvious signs of fire damage.

(B) WL portion includes floor structure and approx 60" of belly skin.

CAH/tele
JAM-10-14-96

Mr. Pochean
TWA 7/27/96

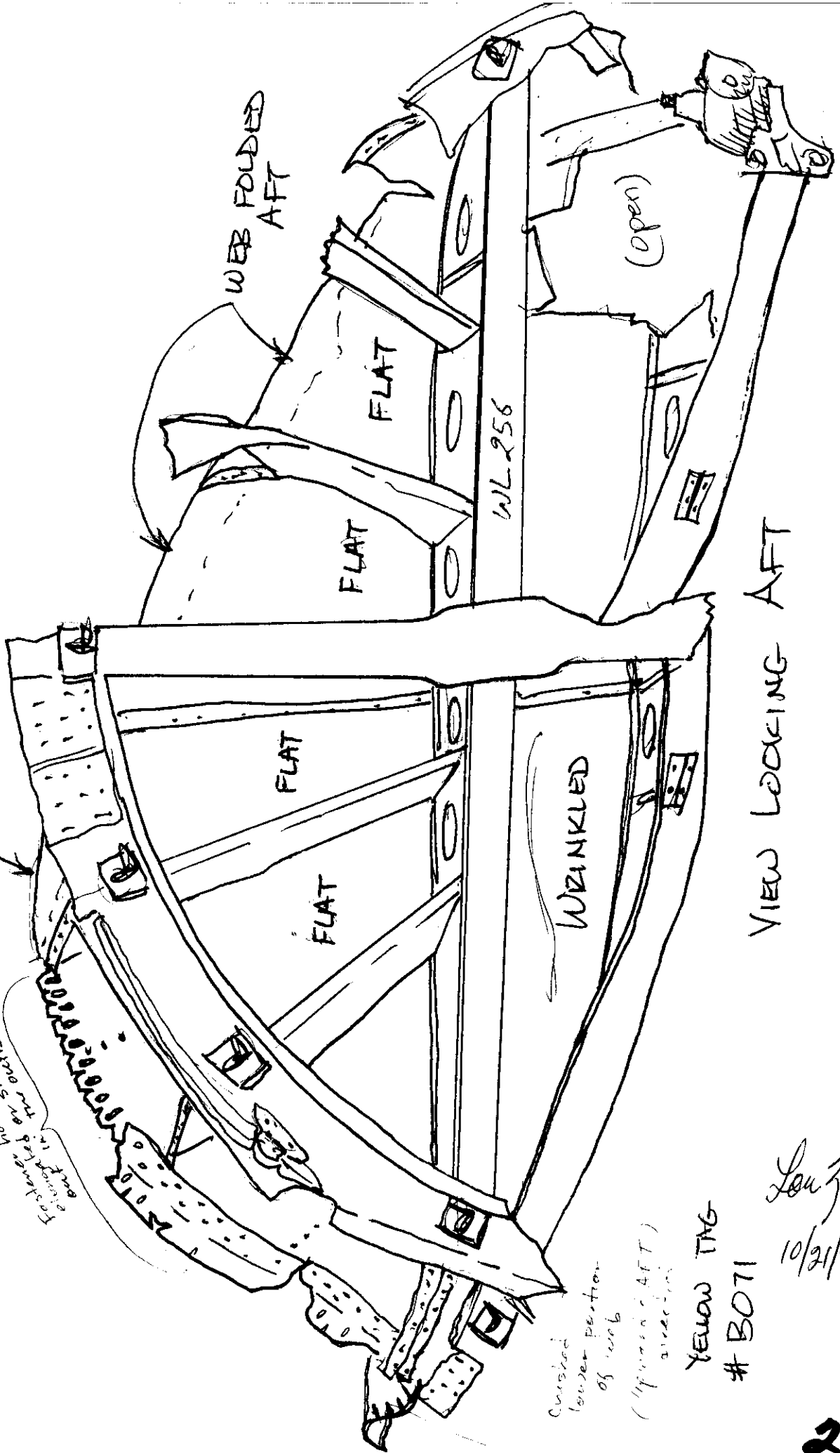
S. Chisholm
 8/6/96
 10/21/96
 FAA

UPI - R PORTION of
STA 140 BULKHEAD

LFB (A)

WEB FOLDED AFT

Forlane holes skewed & oriented
average 1/2" to 1" overboard
& directed forward

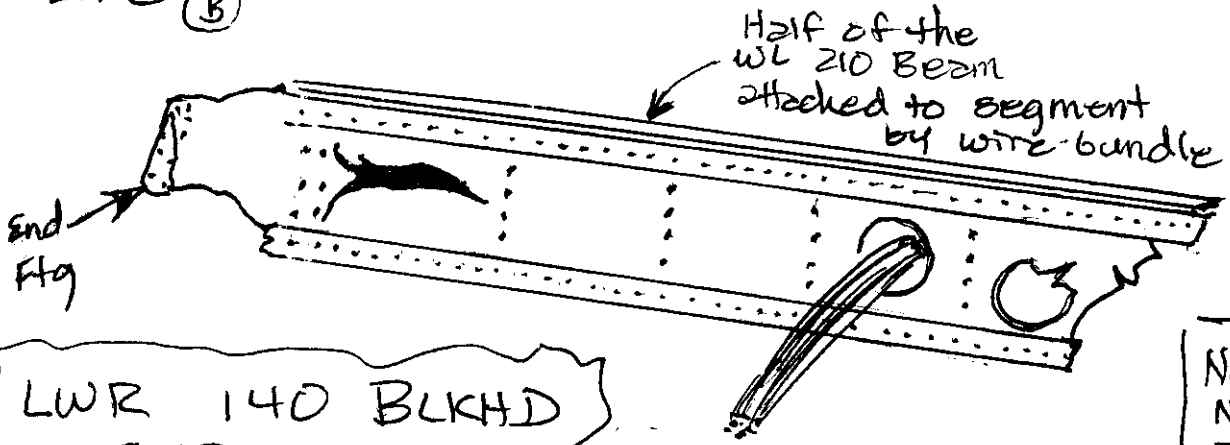


Crushed lower portion of web (upward AFT) direction

YELLOW TAG # B071

Lou Zullo
FAA
10/21/96

LF8 (3)

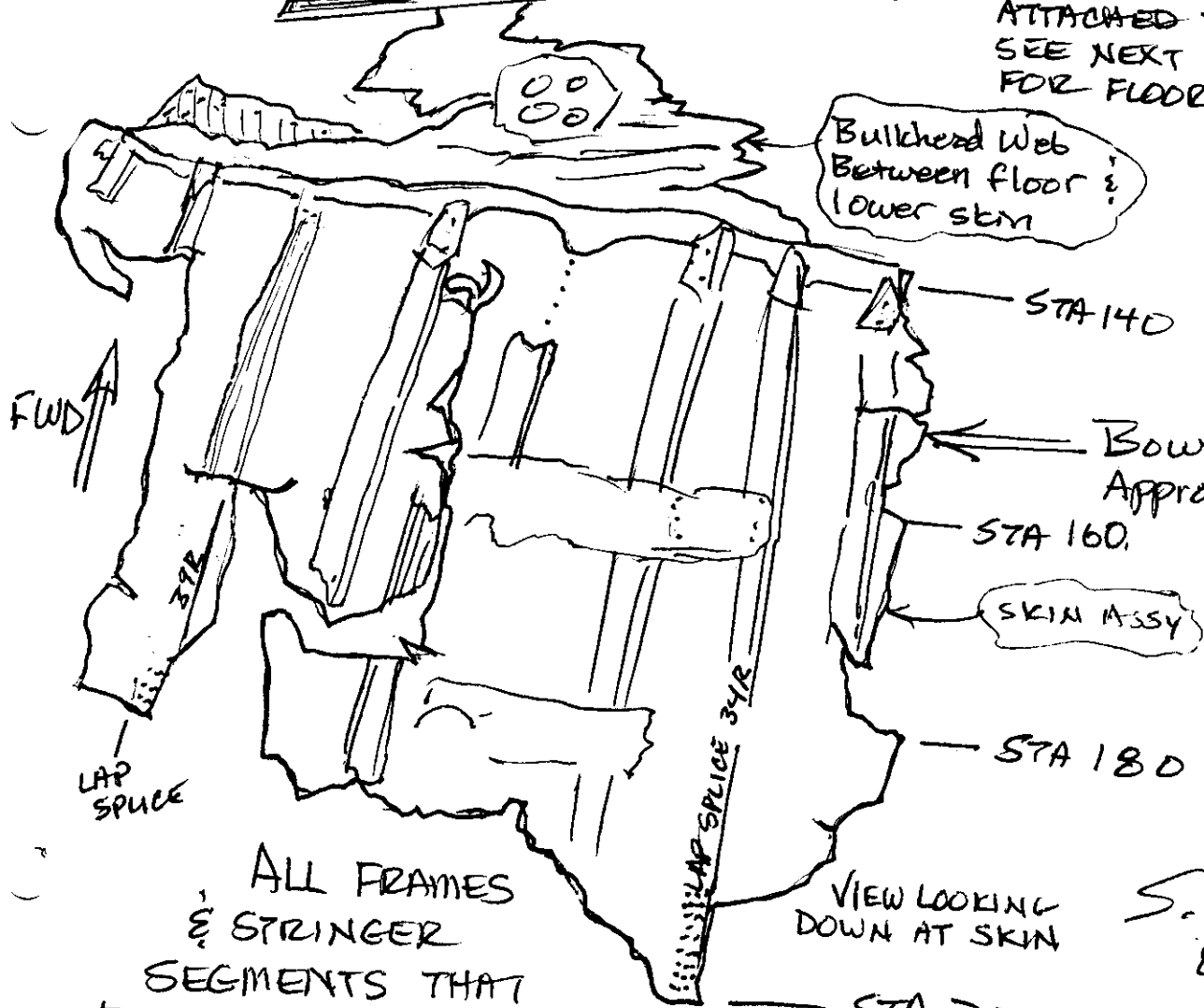


LWR 140 BLKHD STRUCTURE

Note:
 NO I.D.
 TAG. Upper
 portion (A)
 from Area
 #2



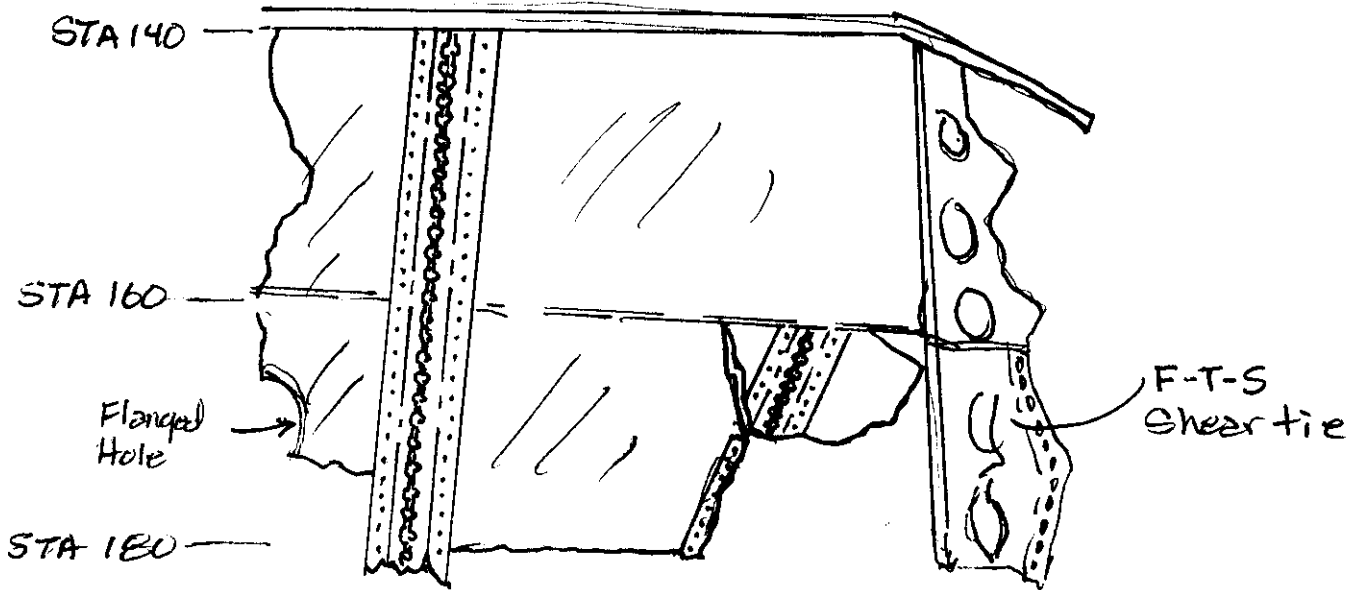
FLOOR STRUCTURE
 ATTACHED TO BLKHD.
 SEE NEXT SHEET
 FOR FLOOR PLAN
 VIEW.



ALL FRAMES
 & STRINGER
 SEGMENTS THAT
 REMAIN ARE FLAT AGAINST SKIN

Lou Zullo
 FAA
 10/21/96
 S. Chisholm
 8/6/96

LFB (B)



PLAN VIEW OF FLOOR
Structure attached to
STA 140 Bulkhead.

S Chizhok
8/6/96
Lou Zullo PAI
10/21/96

LF8

Additional Forward Pressure Bulkhead Segment shown as (C), (D), (E), and (F) on next sheet.

Part (C): Yellow Tag # B2051 ~~No Tag~~

This part is severely distorted. No obvious direction of deformation. No beams or stiffeners remain attached.

Part (D): Yellow Tag # B-2052 ~~No Tag~~

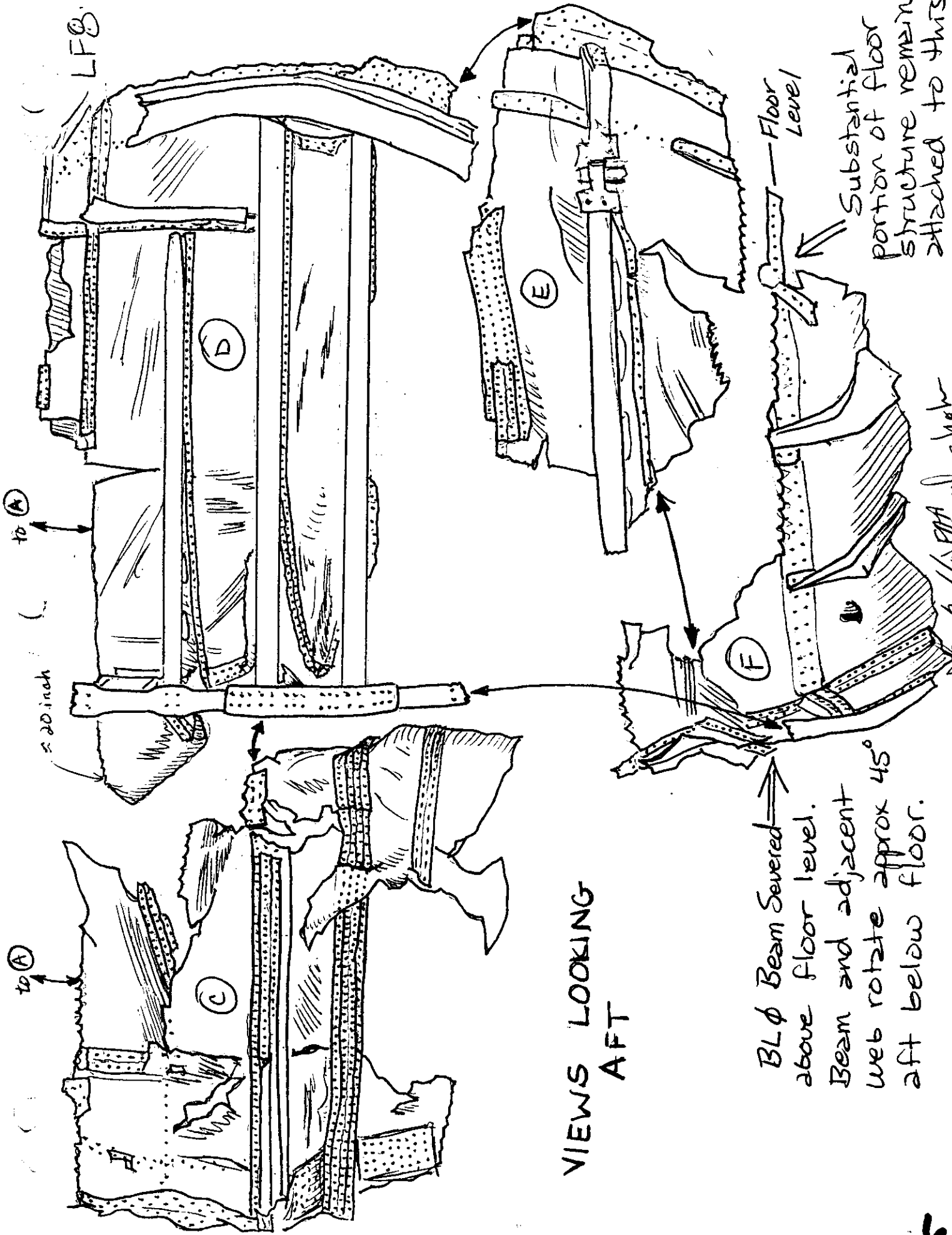
This part is quite straight. Three horizontal beams left of BL ϕ are essentially intact.

Part (E): Yellow Tag # B254 ^{40 39 072} _{72 38 403}
Small segment that aligns with Part (D)

Part (F): Yellow Tag # B264 ^{40 39 082} _{72 38 414}
This segment is attached to the main deck floor. A substantial portion of the floor structure left of BL ϕ is attached to this piece. The structure bends aft under the floor level as shown.

No fire Damage or sooting on any parts.

S. Chisholm
9/12/96
J. Chisholm
10/31/96



IEWS LOOKING AFT

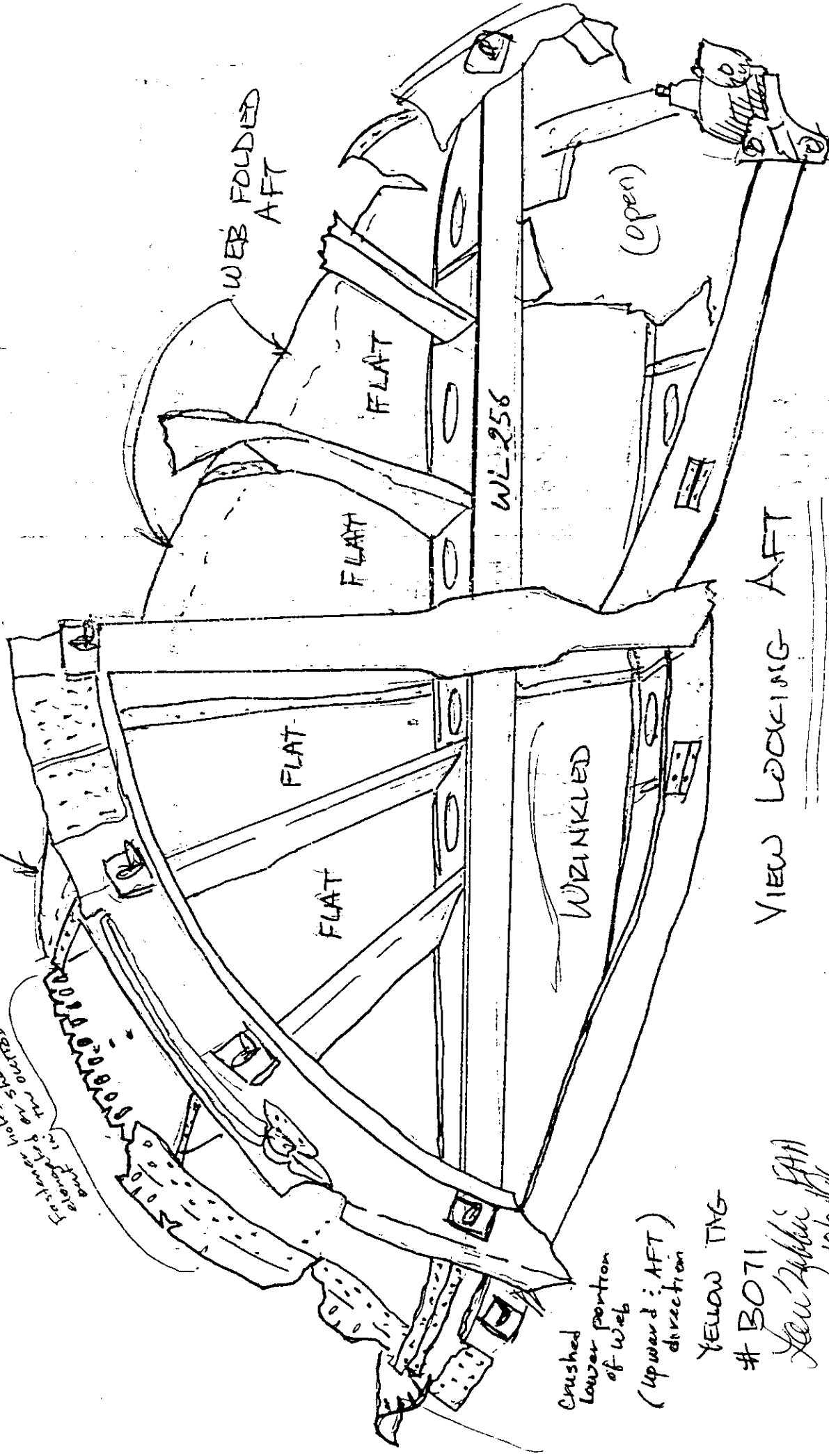
Don Appledorn FAA
 Chris Mohr
 8/12/96
 10/21/96

U. R. PORTION of
STA 140 BLKHD

LFB (A)

Engineer holds
along the 5' length
of the web
direction

WEB FOLDED AFT



WEB FOLDED AFT

FLAT

FLAT

WL-256

(open)

WRINKLED

VIEW LOOKING AFT

Crushed
lower portion
of web
(upward: AFT)
direction

YELLOW TAG
B071

Alan Ziskin PHA
10/2/96

204