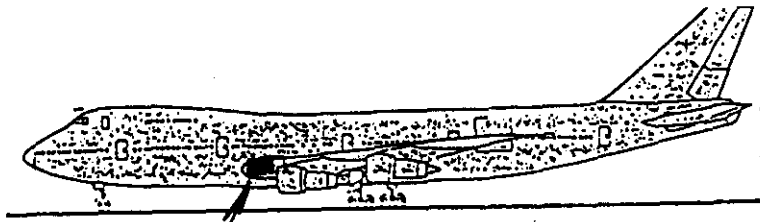


REFER FIRE AND EXPLOSION GROUP NOTES FOR FIRE DAMAGE

Part 15/10/96



LOG # LF-70A & B

TARGET # \_\_\_\_\_

COORD: LAT \_\_\_\_\_  
LONG \_\_\_\_\_

FUSELAGE SKIN/STRINGER  
PLUS STA 940 FRAME  
SEGMENT - LHS

DEBRIS FIELD GREEN

STA 923 - STA 963  
STR 34 2/3 L → 29L

PART A GREEN TAG Z2518  
FBI# 9-12-96-2  
PART B GREEN TAG Z3119  
FBI# 9-9-96-49

- BOTH PARTS FREE OF ANY OBVIOUS SIGNS OF SOOTING
- PART A SEGMENT FROM STA 940 - 923, STR 32L UPWARDS IS FOLDED ACCORDIAN STYLE - SEE SKETCH
- FWD EDGE OF PART MATES w/ LF-5
- LWR EDGE OF PART MATES w/ LF-51 } PART A
- PART A HAS LOCATIONS WHERE PRIMER IS RUBBED OFF MAINLY ON OUTER SURFACES OF BENDS.
- UPR EDGE OF PART A HARRIES UP WITH PART LF-38
- AFT EDGE OF PART B DOESN'T MATE WITH PART LF-63, BUT COMES W/IN INCHES OF DOING SO
- THERE IS NO SIGNS OF PILLOWING BETWEEN FASTENERS
- FRACTURE FACES WERE DUCTILE/TENSION

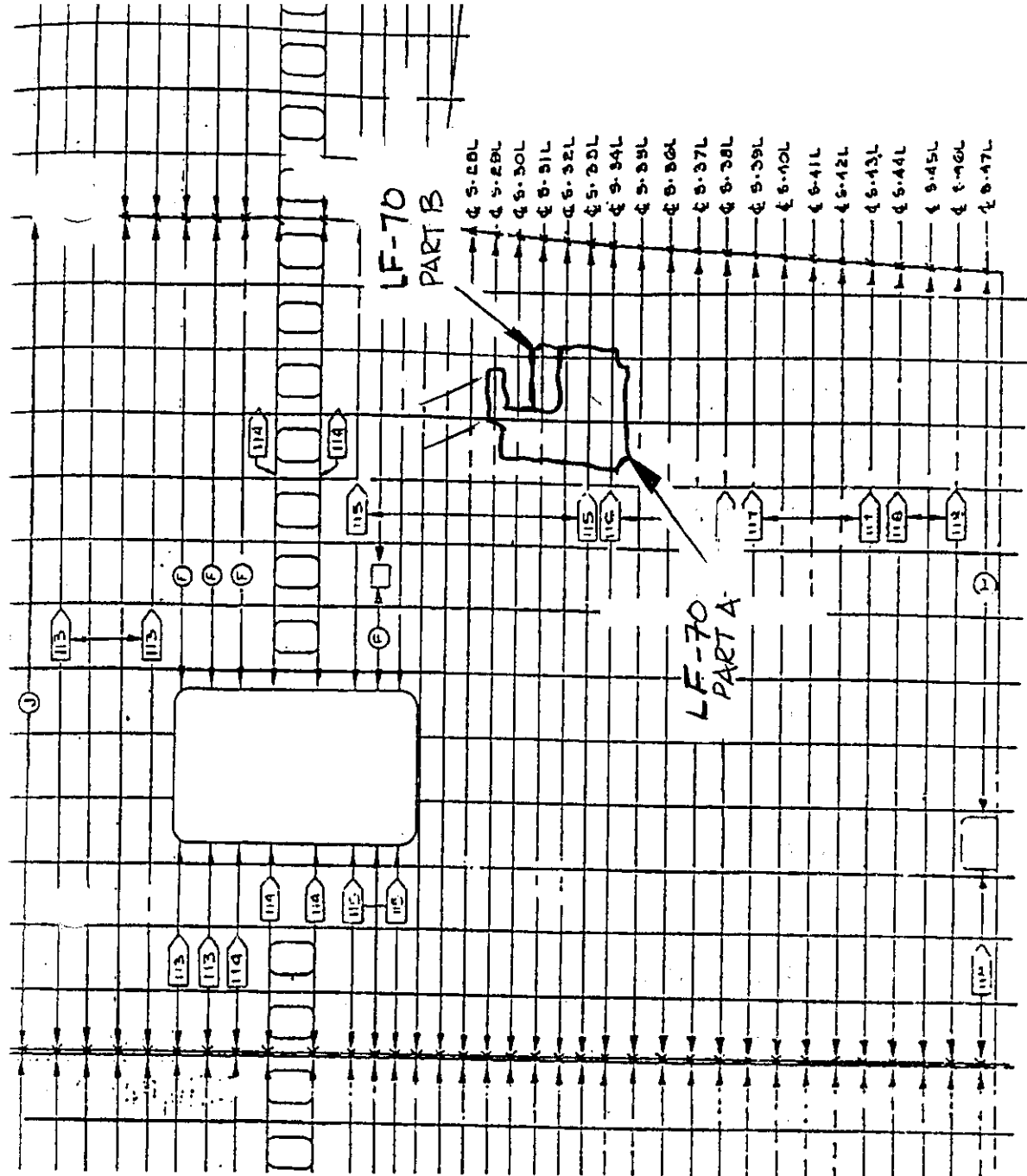
PART A LAT 40° 39' 46"  
LONG 72° 37' 27.3"

PART B LAT 40° 39' 47.4"  
LONG 72° 37' 23.8"

Blairshaker TWA 10/13/96  
C. J. Hule - JAM 10-14-96

Stephen F. Klappert Jr  
FAD 10-23

Pg 1 of 3  
R. Hanauer 9/20/96



LF-70  
PART B

LF-70  
PART A

- STA 980 -
- STA 960
- STA 940
- STA 920

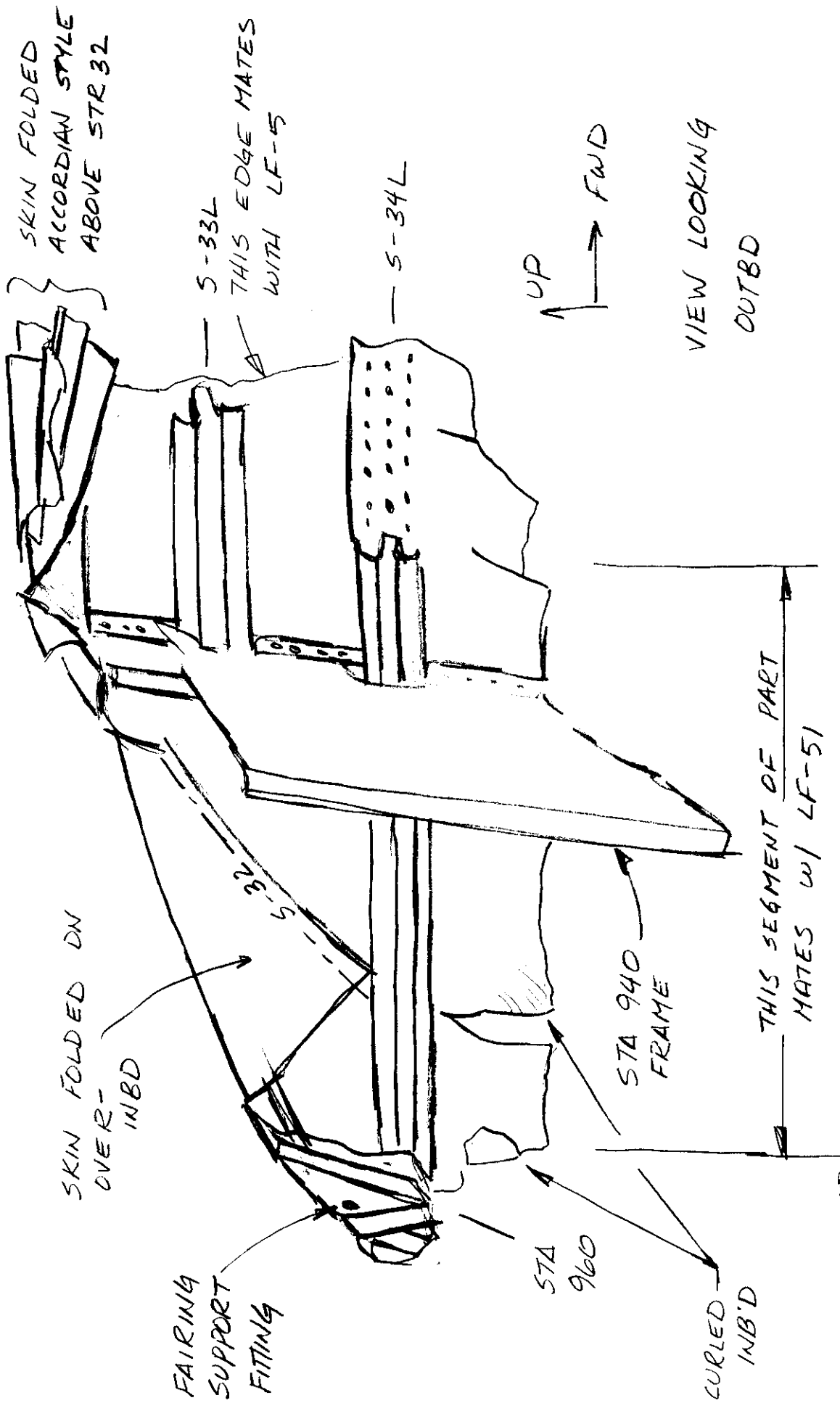
SIA  
810.00

*Pg 2 of 3*  
*R. H. ...*

5B000053

Stephen F. Klupalt  
FAA 10-23-46

LF-70  
PART A



NOTE: NO SOOT OR FIRE DAMAGE.  
SEP 24 1996

Pg 3043  
Ramanujan 9/20/96