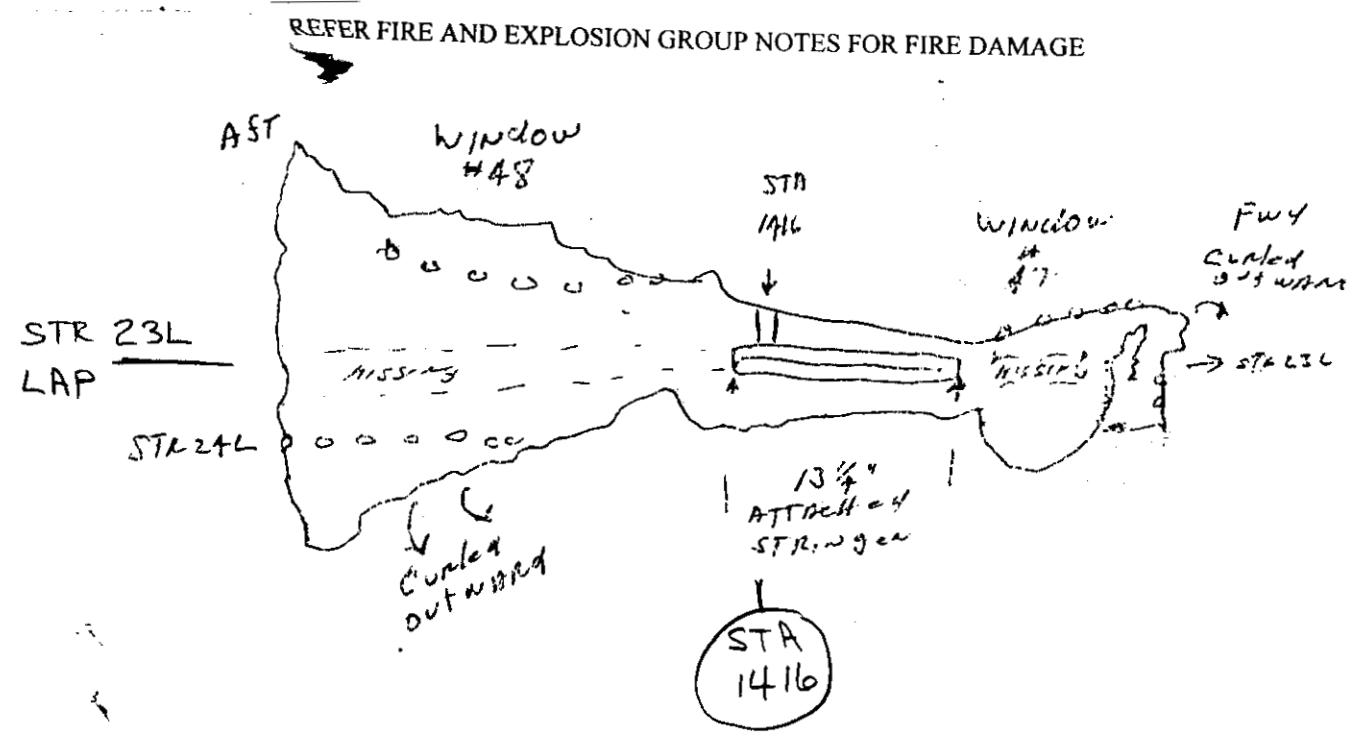


LOG # LF66 12/10/96  
 TARGET # C-2322  
 COORD: LAT \_\_\_\_\_  
 LONG \_\_\_\_\_

C 2322

Date 8-26-96-36 EMB DEBRIS FIELD  
 FBI records indicate this lot came from GREEN

L/H Section of Fuselage Measuring  $42\frac{1}{2} \times 20$ "  
 This piece HAS STR23L Attached to skin at station 1416  
 Fwd FOR 12" complete Total Length of Stringer  $13\frac{1}{4}$ "  
 Forward section is curled inward, Rest is curled outward with jagged edges, NO signs of smoke OR soot.



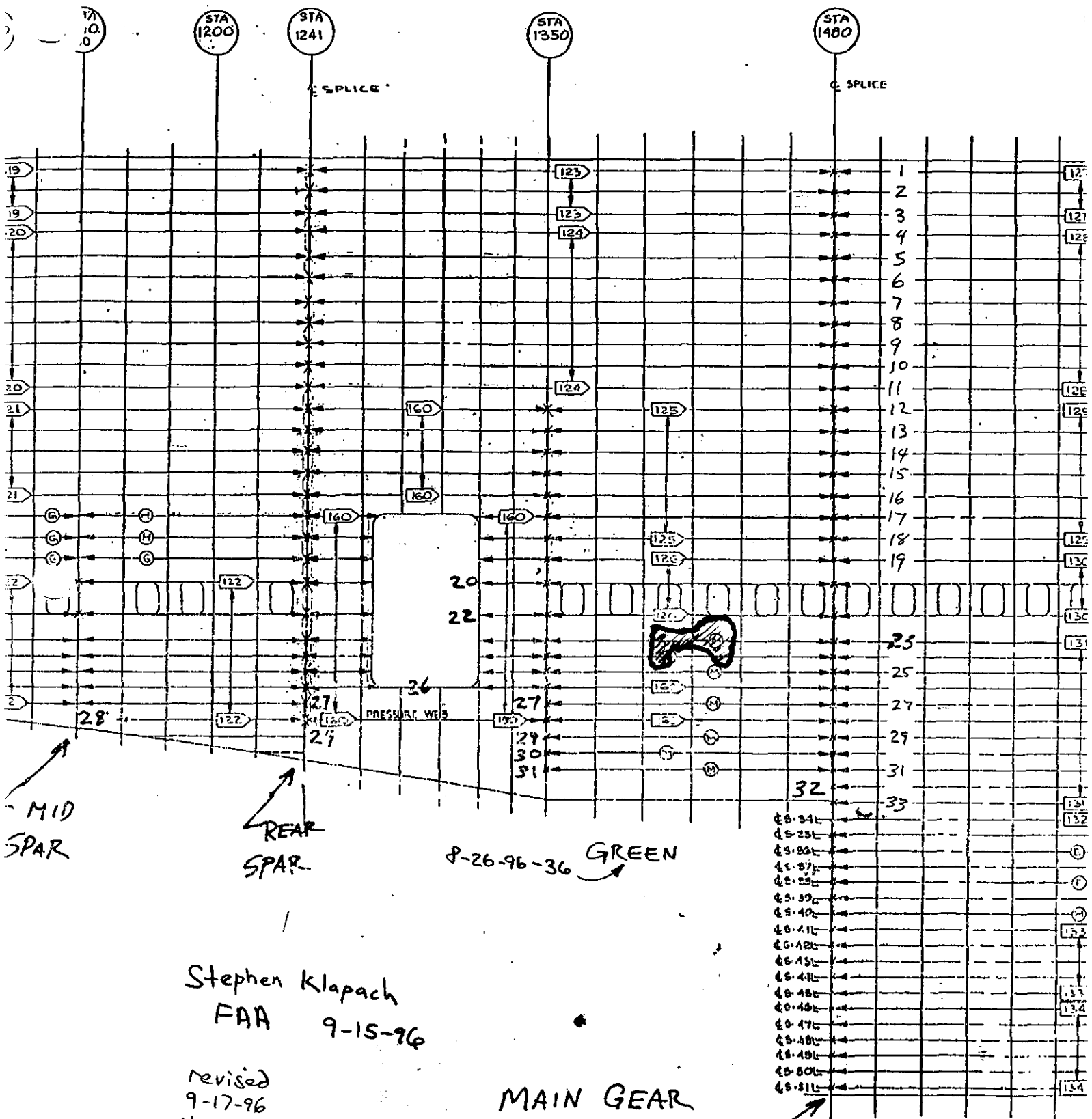
revised 9-17-96  
 Henry Missel  
 Boeing

Tom Todman  
 10-9-96  
 C of M  
 10-12-96 - TAM

Shondra White TWA 10/13/96  
 Stephen Klapach  
 FAA 9-15-96

# LF 66

SEC 44 | SEC 46



REAR SPAR

8-26-96-36 GREEN

Stephen Klapach  
FAA 9-15-96

revised  
9-17-96  
Henry Missel  
Boeing

MAIN GEAR  
W/WELL BLKHD

- CS-34L
- CS-35L
- CS-36L
- CS-37L
- CS-38L
- CS-39L
- CS-40L
- CS-41L
- CS-42L
- CS-43L
- CS-44L
- CS-45L
- CS-46L
- CS-47L
- CS-48L
- CS-49L
- CS-50L
- CS-51L

DEVELOPED VIEW-  
LEFT SIDE  
SCALE: 1/20