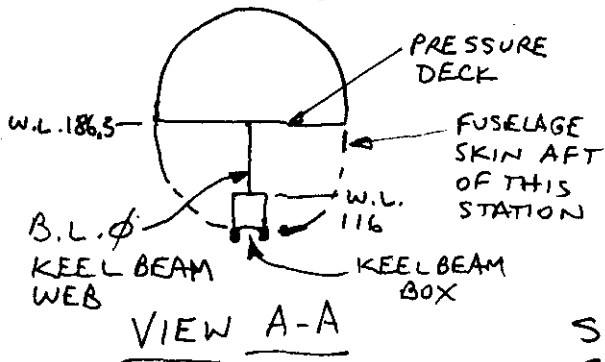


LOG # LF61 RS  
10/10/96

TARGET # C 1083 GREEN

COORD: LAT \_\_\_\_\_  
LONG \_\_\_\_\_

DEBRIS FIELD GREEN



A SEGMENT OF THE B.L.  $\phi$  WEB, STA 1460 TO 1480, FROM TOP OF KEEL BEAM BOX TO BOTTOM OF PRESSURE DECK,

SEE ATTACHED SKETCH FOR GEOMETRIC DESCRIPTION.

OTHER DETAILS:

- 1) THERE APPEARS TO BE LIGHT SOOTING OVER DIFFERENT REGIONS OF THE PANEL
- 2) FRACTURE SURFACES APPEAR TO BE DUCTILE FAILURE

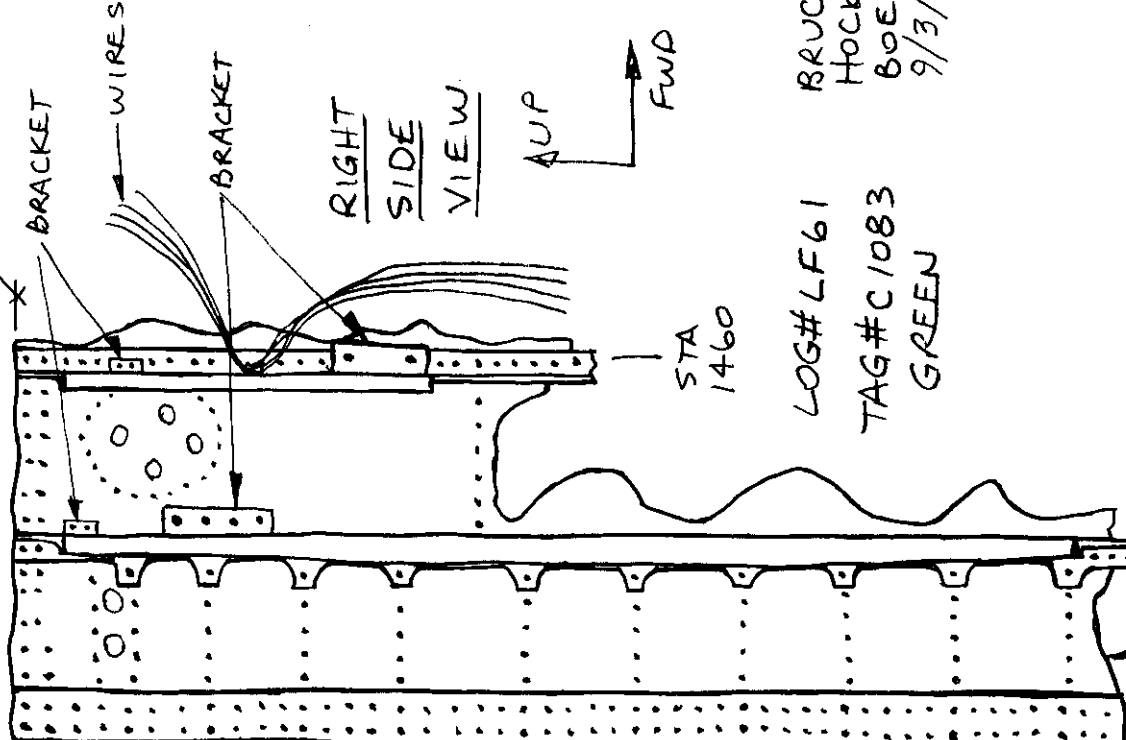
Tom Redens  
FAA 10-22-96

Neil Sewell  
TWA 10-10-96  
C. Hill  
FAA 10-11-96

B. HOCKING  
BOEING  
9/3/96

B.L. Ø KEEL BEAM WEB - STA 1460 TO 1480, TOP OF KEEL BOX  
MFG THRU-HOLE SHEAR 10-11-96 TO BOTTOM OF PRESSURE DECK

W.L. 186.3 (PRESS, DK)  
 BRACKET  
 WIRES  
 BRACKET  
 STA 1460  
 LOG# LF61  
 TAG# C1083  
 GREEN  
 W.L. 116  
 WEB BROKEN OFF FROM ATTACHMENT CHORD AT TOP OF KEEL BOX  
 STA 1480

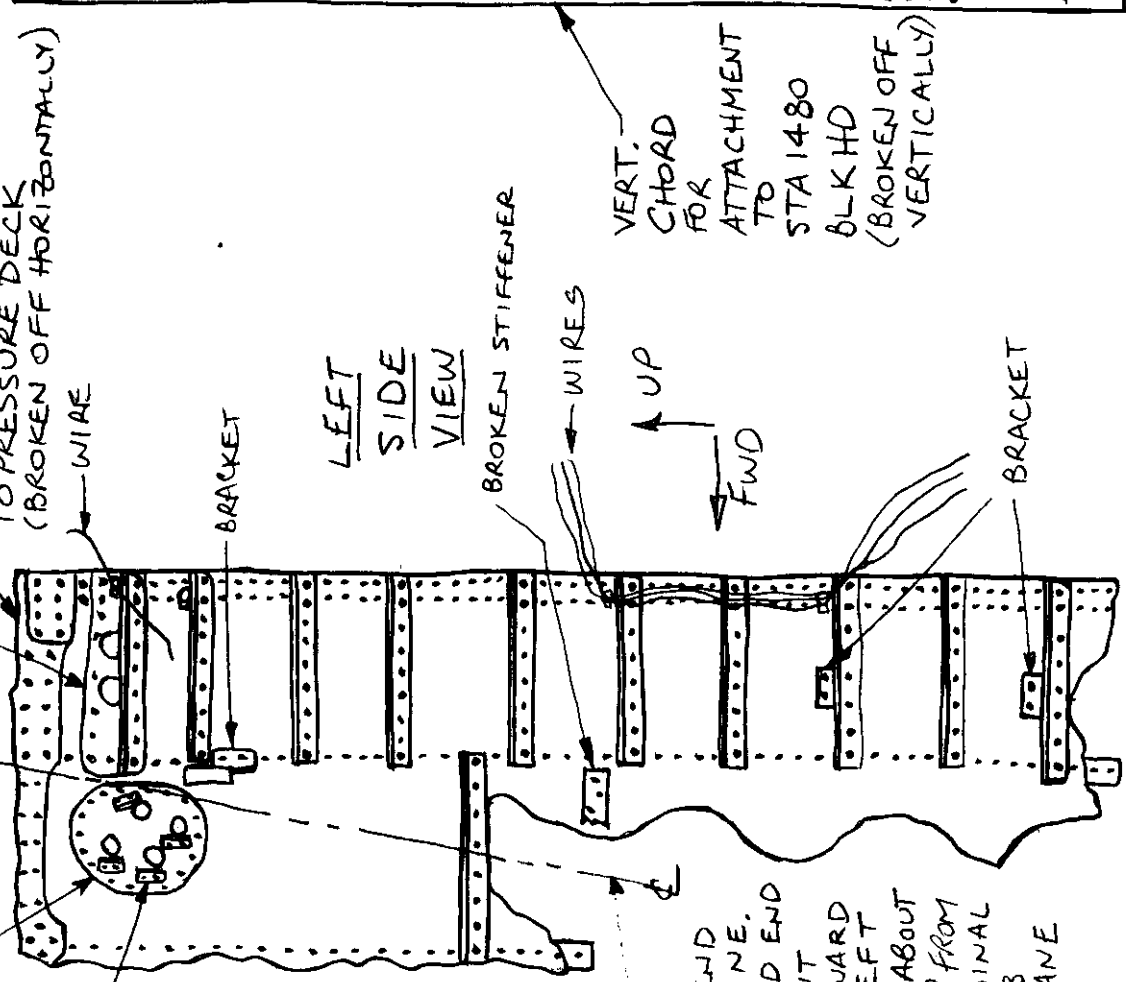


RIGHT SIDE VIEW

UP  
 FWD

BRUCE HOCKING BOEING 9/3/96

HORIZ. CHORD FOR ATTACHMENT TO PRESSURE DECK (BROKEN OFF HORIZONTALLY)  
 WIRE  
 BRACKET  
 BROKEN STIFFENER  
 WIRES  
 UP  
 FWD



LEFT SIDE VIEW

UP  
 FWD

STA 1480

BEND LINE, FWD END BENT TOWARD LEFT AT ABOUT 40° FROM ORIGINAL WEB PLANE