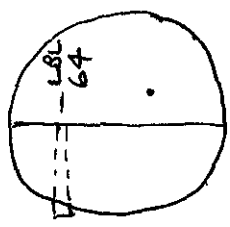


LOG # LF151
 TARGET # C2486 (REF. C104)
 COORD: LAT _____
 LONG _____

DEBRIS FIELD GREEN



VIEW A-A

LEFT BODY LANDING GEAR TRUNNION SUPPORT FITTING, OUTBOARD (LBL 64), DWG # 65810462

THE SUBJECT PIECE WAS SEPARATED FROM THE LEFT BODY LANDING GEAR, LG 3, FOR MOUNTING ON THE MOCK-UP FRAMEWORK.

THE PIECE IS COMPRISED OF THE FOLLOWING PARTS:

- 1) THE LH BLG TRUNNION SUPPORT FTG.
- 2) A SEGMENT OF THE STA 1480 BULKHEAD WEB FROM WL 183 DOWN TO THE BULKHEAD LOWER RING CHORD
- 3) REMNANT OF THE LOWER BACKUP STRUCTURE AT W.L. 117
- 4) THE OUTBOARD OBLIQUE TIE ROD WHICH RUNS FROM THE UPPER END OF THE SUPPORT FTG UP TO THE PRESSURE DECK IMMEDIATELY BELOW THE LBL 75.92 FLOORBEAM.
- 5) THE LOWER END OF THE OBLIQUE TIE ROD (ABOUT 4 INCHES) WHICH RUNS FROM THE UPPER END OF THE SUPPORT FTG UP TO THE PRESSURE DECK IMMEDIATELY BELOW THE LBL 57.5 FLOORBEAM.
- 6) REMNANTS OF HYDRAULIC TUBING WHICH PASSES THROUGH THE SUPPORT FITTING AT ABOUT W.L. 130, STA 1472.

THERE ARE INDICATIONS OF WITNESS MARKS AT THE FOLLOWING LOCATIONS ON THE SUPPORT FITTING:

- 1) AT ABOUT WL 139, ON THE OUTBOARD FACE OF THE FITTING LBL 64 WEB, THERE IS ONE MARK ABOUT 7 INCHES (HORIZONTAL) WITH PAINT REMOVED DOWN TO THE PRIMER. THERE IS ONE MARK WITH BARE ALUMINUM EXPOSED (ABOUT 5 INCHES LONG RUNNING DIAGONALLY AND UP FROM THE FWD END TO THE AFT END)
- 2) AT ABOUT WL 125 AT THE OUTBOARD FWD CORNER OF THE FTG'S FWD CHORD, THE MARK IS ABOUT 1 3/4 INCHES HIGH, 0.3 INCHES DEEP AND 0.5 INCHES WIDE AT THE CHORD EDGE.

Leigh D. Johnson - ALIA
 3-21-97

Devin Santiago IAA
 3-13-97

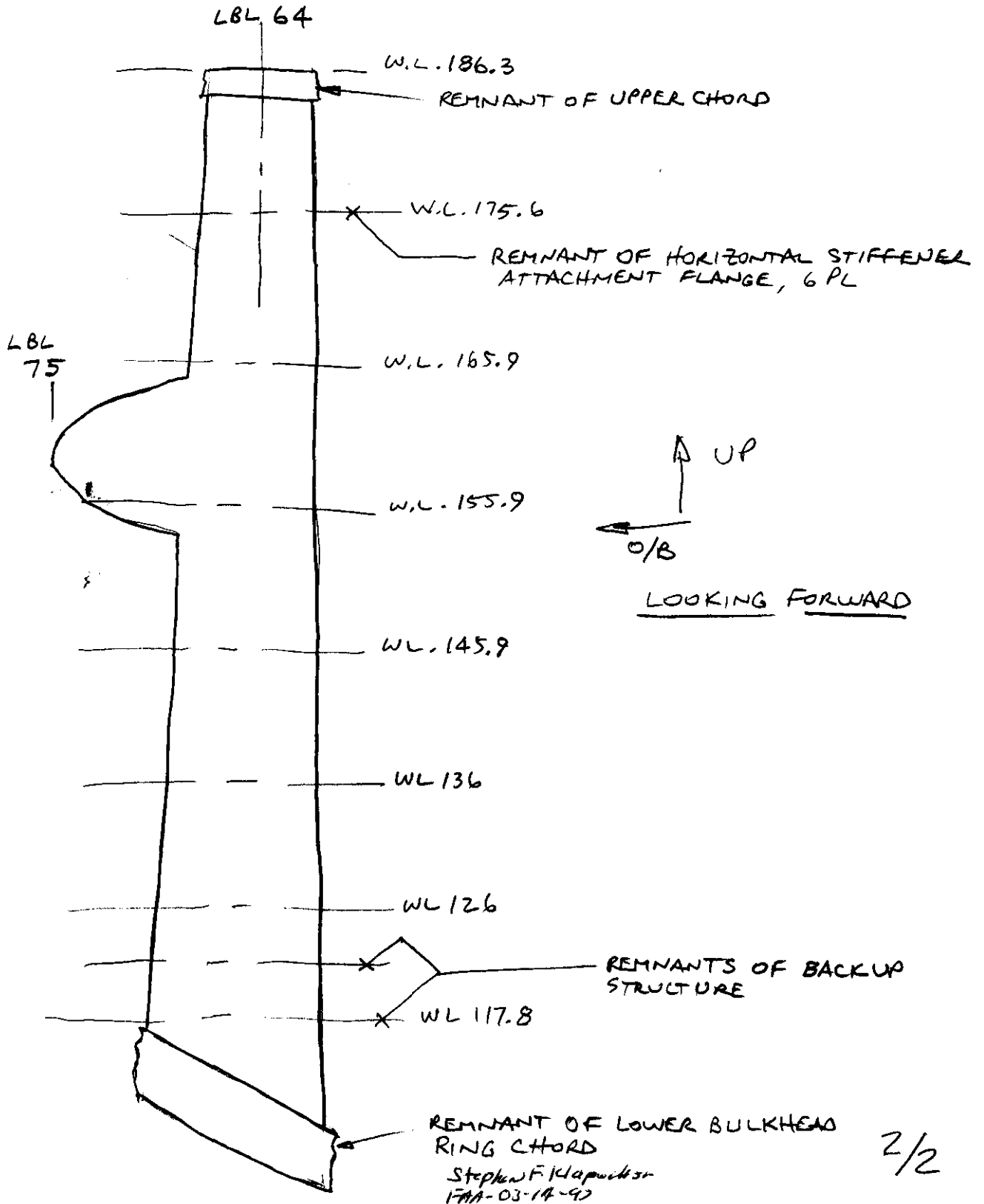
— CONTINUED —
 Stephen F. K...
 FAA-03-14-97

Amy... TWA
 3-13-97

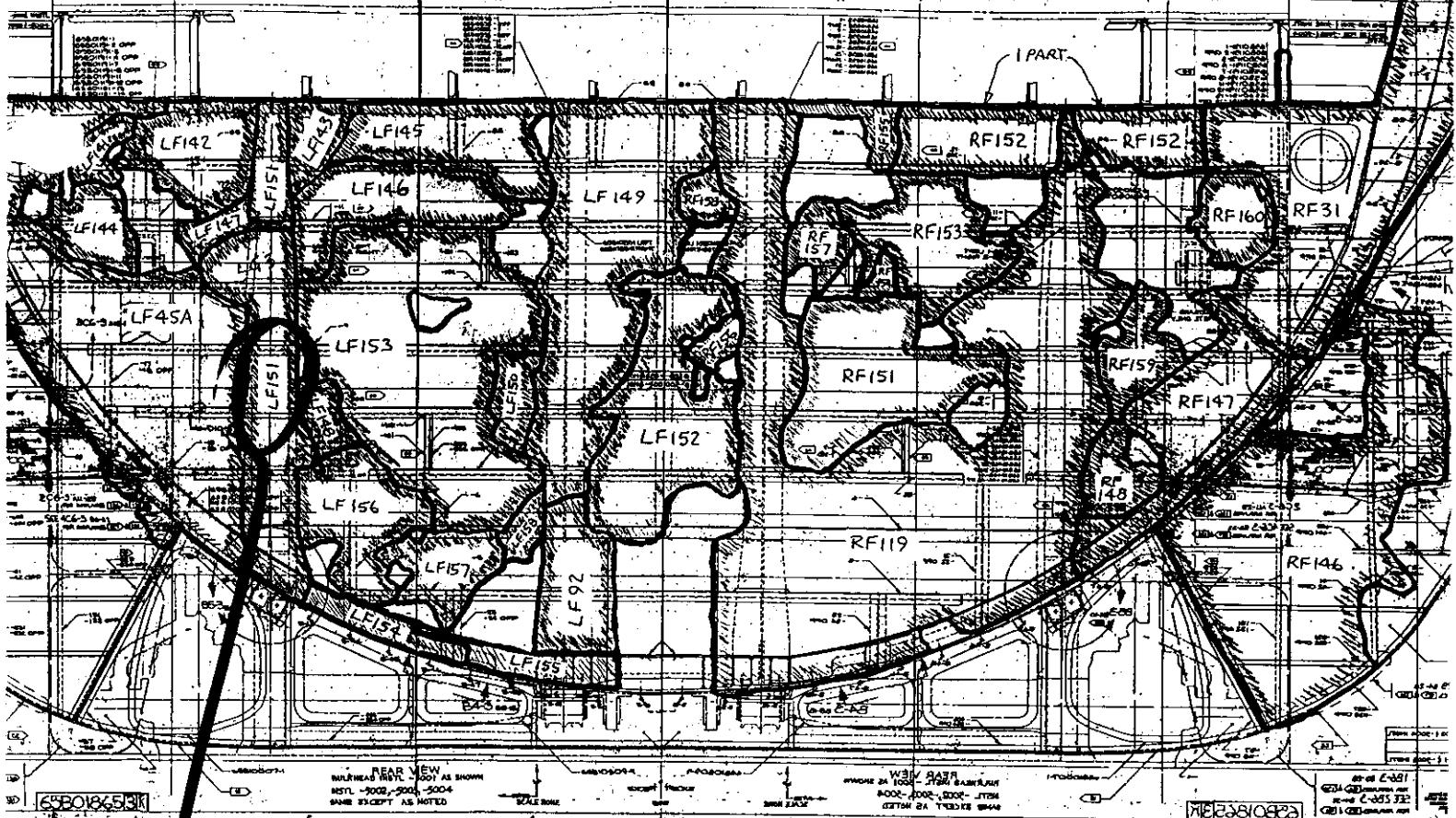
1/2

3) AT ABOUT WL 131, LBL 63, ON THE FWD SURFACE OF THE FWD CHORD, THERE APPEARS TO BE AN IMPACT POINT WITH ABOUT 0.03 DEPTH, ABOUT 1.0 INCH DIAMETER IN SIZE.

SKETCH OF STA 1480 BULKHEAD WEB ATTACHED TO SUPPORT FITTING:



STA 1480 BULKHEAD ROADMAP



LOG #
LF151

Stephen F. Klapach Jr.
FPA 03 14-43

L R