

# LF45D

THIS FRACTURE RUNS  
DIAGONALLY DOWN & FWD  
FROM THE AFT EDGE OF THE  
FLANGE TO THE FWD EDGE AT  
THE 1<sup>ST</sup> RIB.

WL 200

FRACTURED PIECE  
OFF THE 65B01191  
STA 1480 SIDE FTG

WL 186.3  
(PRESSURE  
DECK  
LEVEL)

COPY OF  
DWG  
65B01191  
SHT 2

Dennis Santogostino  
3-26-97

Tommy Rodman  
FAA 3-27-97

FBI # 8-29-96-4

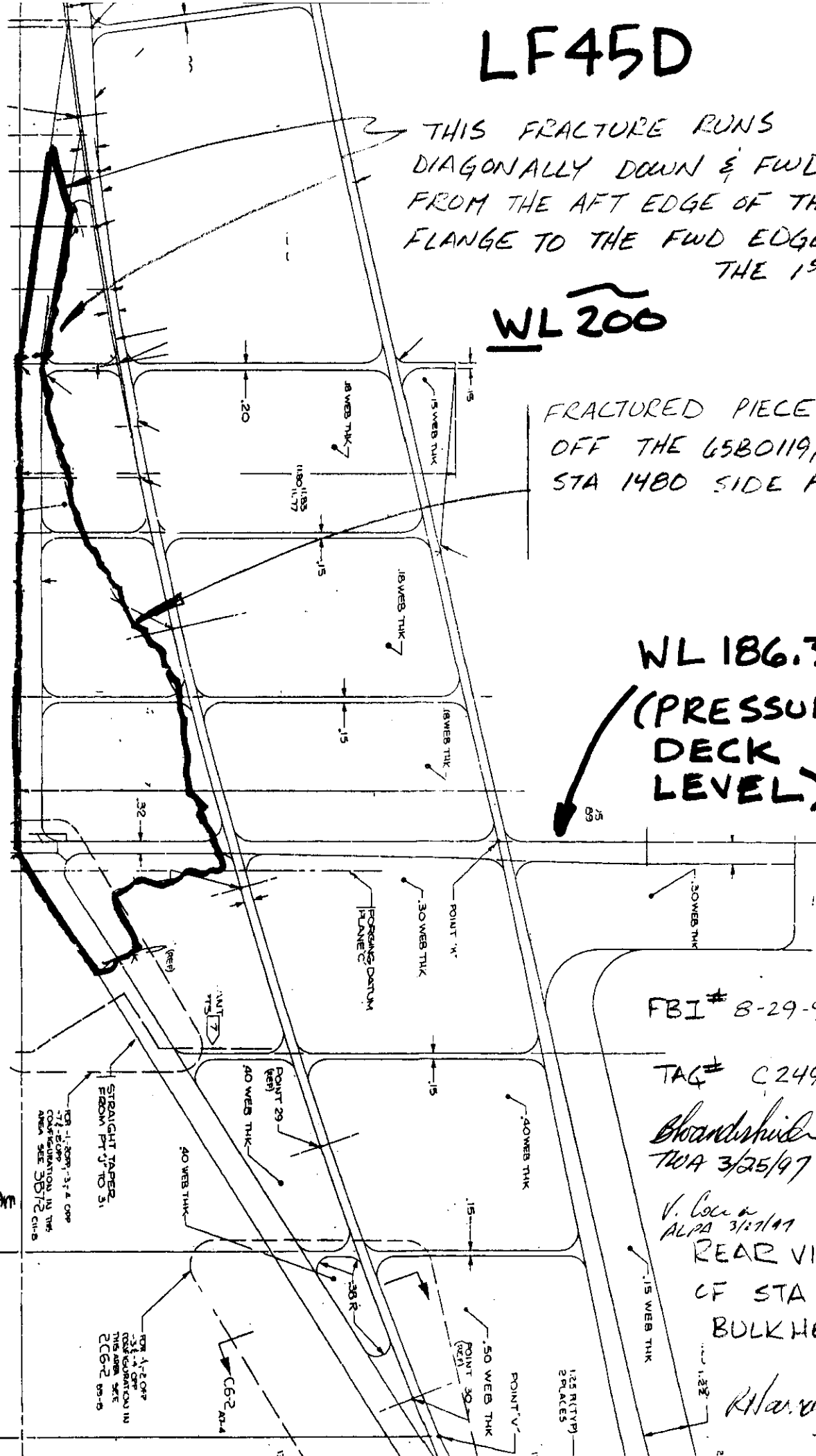
TAG # C2490

Shandshide  
TWA 3/25/97

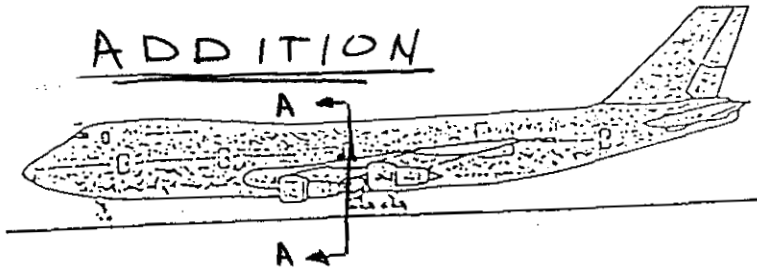
V. Coen  
ALPD 3/17/97

REAR VIEW  
OF STA 1480  
BULKHEAD

R. W. ...  
3/23/97



ADDITION



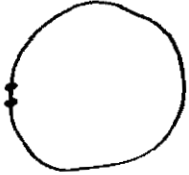
LOG # LF67 D,E

TAG # see list

COORD: LAT \_\_\_\_\_

LONG \_\_\_\_\_

DEBRIS FIELD GREEN



SEC AA

LF67D Z4092 11-17-96-12

LF67E Z2931 9-21-96-1

LF67D is a piece of fuselage outer skin, disbonded from its underlying doubler, at the lower forward corner of the main entry door 3L cutout. This skin was covered by the steel corner doubler, that is part of LF67A. This part mates to LF67A. The exterior is pock-marked and both sides are scored. THIS SECTION IS SLIGHTLY BOWED INWARD.

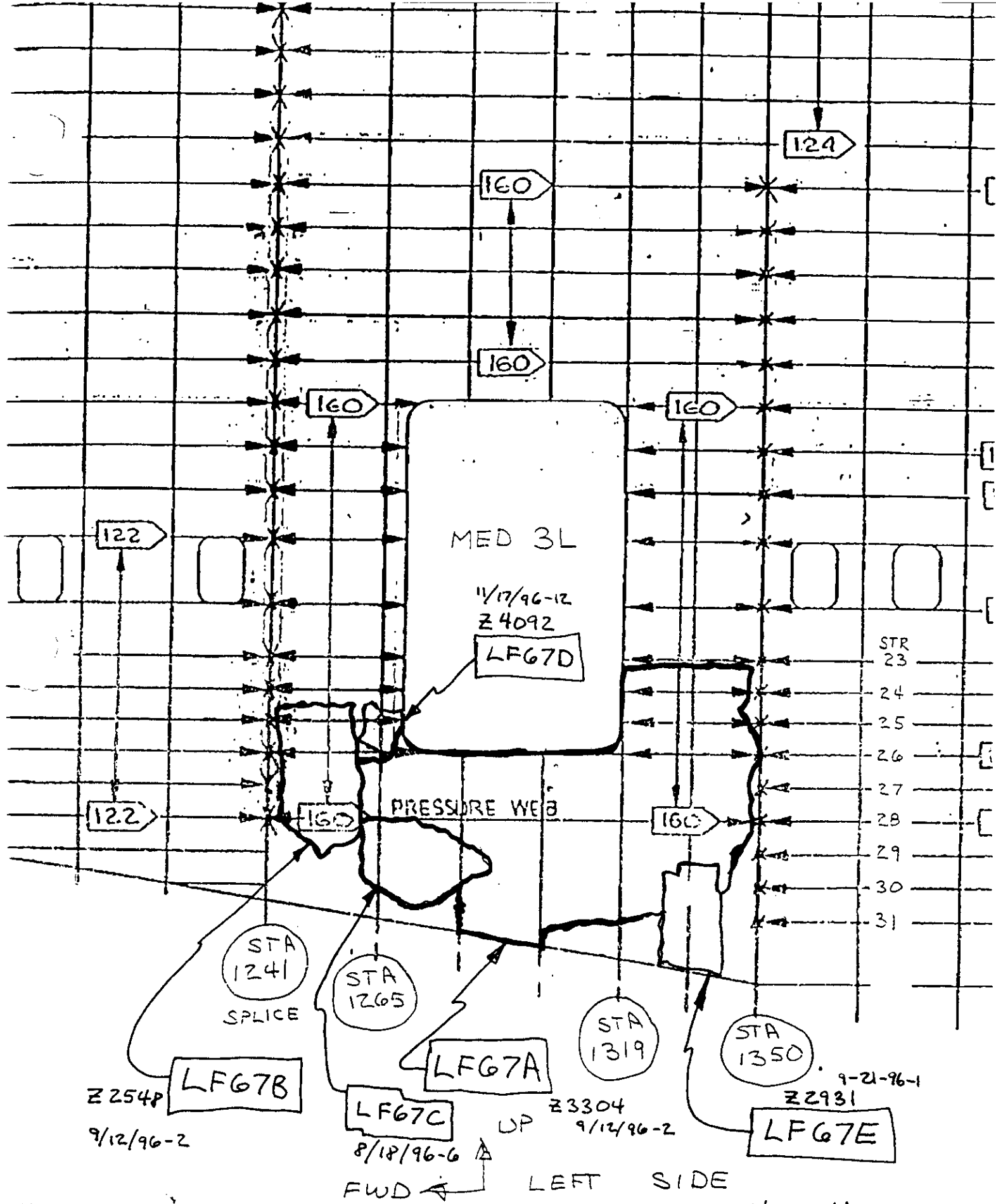
LF67E is a piece of fuselage skin above the overwing longeron between Sta 1328 to 1340.

It is along the fastener lines at Sta 1328 and 1340. This part mates to LF67A, LF71A, and LF179A. THIS PART IS FOLDED 180°

Dennis Santiago IAM  
4/30/97

Henry Miller  
4-30-97  
Stephen R. Kispacinski  
FIA 04-30-97

Henry Missel  
4-24-97 Boeing  
V. Cocea ALPA  
4-30-97



Henry Missel  
4-24-97 Boeing 2/3

