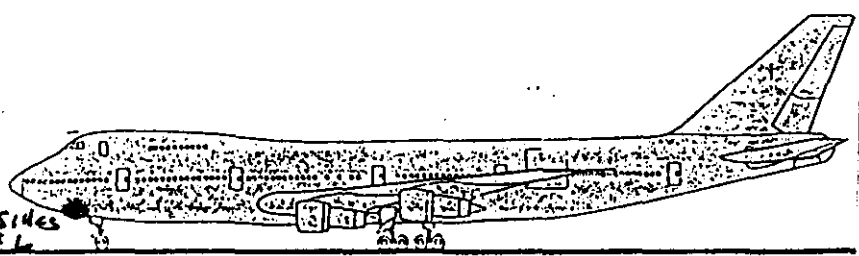


Both Sides
REL



LOG # 505 BSAI 10-1-96
LF 30

TARGET # _____

COORD: LAT 40

LONG 72

- ✓ LF30A - TAG# ? Field#
- ✓ 30 B
- ✓ 30 C - B078
- ✓ 30 D
- ✓ 30 E
- ✓ 30 F B204
- ✓ 30 G B235
- ✓ 30 H
- ✓ 30 I

Today
FAA 10-9-96

DEBRIS FIELD 13

Met Swarth
TWA-10-9-96

Cpt Hale - JAM
10-30-96

(P)

LF30A LF30R & L

Piece Approximately 11' x 5' SKIN HAS MANY RIPS Curled outward @ Edges, several ripples. Stringers ARE Attached to SKIN & in places pulled AWAY from SKIN and inward.

Station 240 is complete & attached to SKIN but damaged & cracked. All other stations are either HAS a small AREA attached to SKIN or none @ All.

Stations 140-260 All Deformed & portions MISSING, cracked & severed.

Strings 42AR - 42AL are Flattened cracked & severed and attached & separated from SKIN.

All Edges are serrated & curled outward & separated by deep cuts into SKIN AREA.

S-42A-R STA 220-240 is Flattened & cracked & deformed.

S-43A-R starts 6" Fwd STA 220-240, between sta 220-240 Severed & cracked, Deformed, Flattened

S-45R 18" Fwd sta 220 S-45-R Flattened against SKIN, severed Fwd & part MISSING continues to STA 260, S-45-R Attached Midway between STA 240-260

S-46-R 20" Fwd STA 200 deformed & skin opened, ^{S46R} continues 8" Fwd STA 220 & severed in Two places 20" Aft STA 220 Aft STA 240-S45R crumpled Flattened, cracked, crushed & separated from SKIN.

LF30-A-R & L

S47-R 4" Fwd of sta 180-6" aft sta 200, Flattened, crushed & cracked & severed continues STA 220-260 Flattened & cracked.

LF30A-L

S47-L 6" Fwd sta 180-260 deformation of S47L in all areas with many cracks & separations

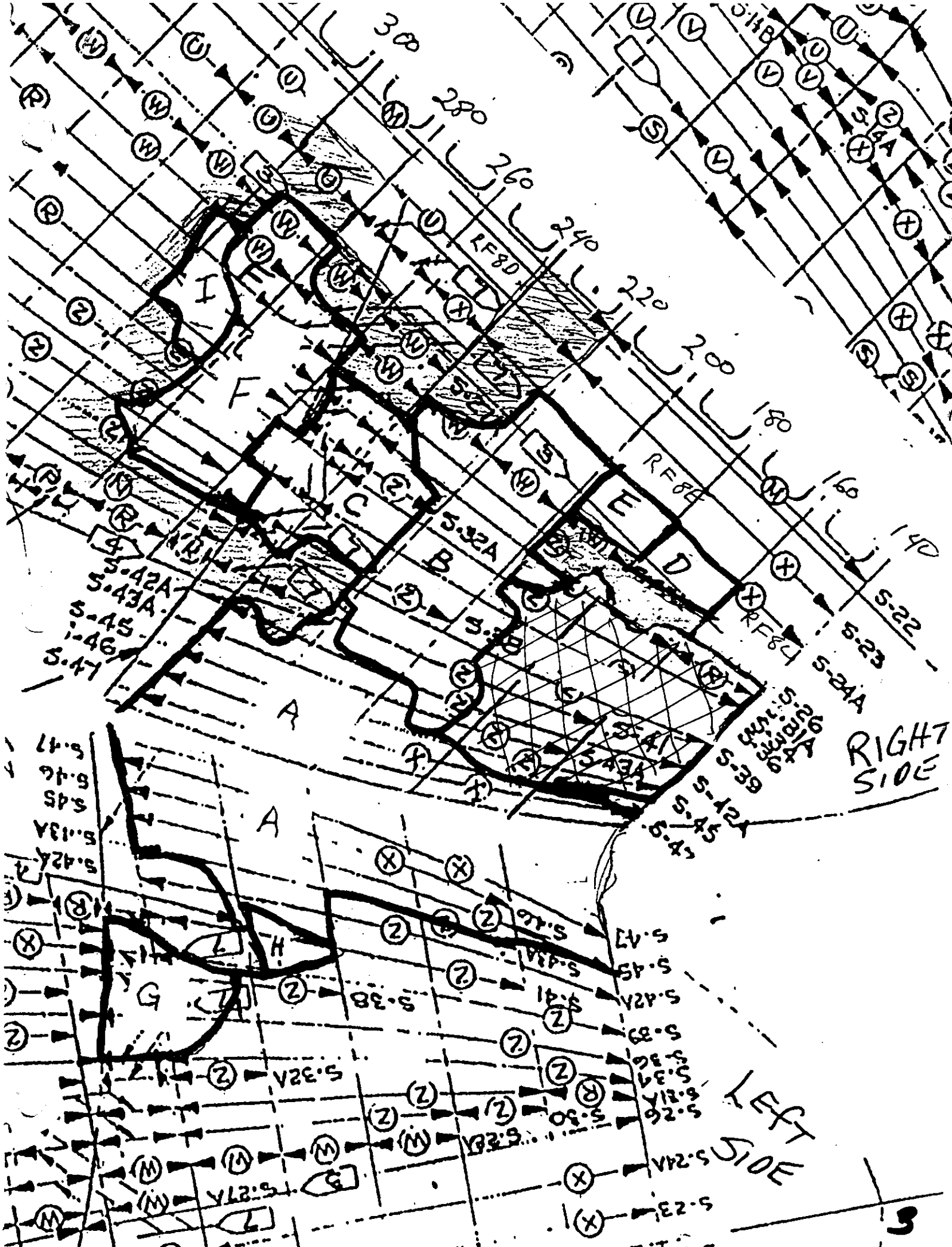
S46-L STA 180-260 CRUSHED & FLATTENED SEVERED & CRACKED.

C45L 20" FWD STA 180-260 CRUSHED & FLATTENED.

43A-L 3" FWD STA 240 & 14" AFT & BENT INWARD

S42-A-L 20" FWD STA 240-6" AFT FLATTENED & BENT INWARD

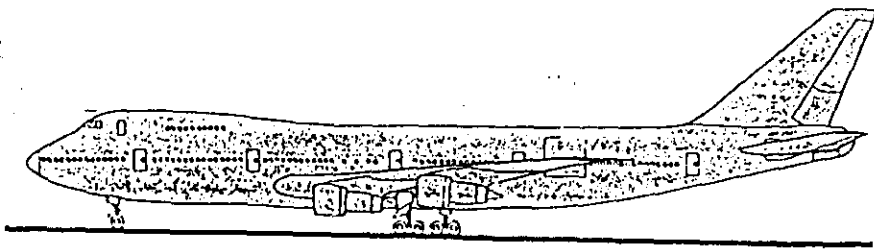
Steve K
FAA



RIGHT SIDE

LEFT SIDE

S-33 on ground surface



LOG # LF 30

TARGET # _____

COORD: LAT 40 39-

LONG 72 38-

LF30A - TAG# ?

30B

30C - B078

DEBRIS FIELD _____

L-F30-B(R)

TAG# ?

Station 200-240

Stringers S-26 - 41-R

THIS SECTION OF FUSELAGE MEASURES APPROXIMATELY 4' x 6' & ENCOMPASSES STA 200-240, & STRINGERS S26 + 41R.

ALL FRAMES ARE MISSING WITH ONLY A FEW SMALL SECTIONS ATTACHED TO SKIN. SKIN HAS MANY FRACTURES, & JAGGERED EDGES, SKIN IS BENT & ROLLED OUTWARD. PORTION STRINGER ARC MISSING FROM SKIN.

S-28A STA 200-240 BENT, MANGLED & PULLED AWAY FROM SKIN, SMALL PIECE OF S-28A ATTACHED TO SKIN FWD OF STA 200. TWO FWD RIVETS PULLED THROUGH

S-30R - STA 200-240 8" AFT STA 200 MISSING

REST OF S-30 COMPLETELY FLATTENED & MANGLED

S-31A STA 200-220 + 6" AFT FLATTENED, DISTORTED & MANGLED, WITH RIPS & HOLES IN SKIN.

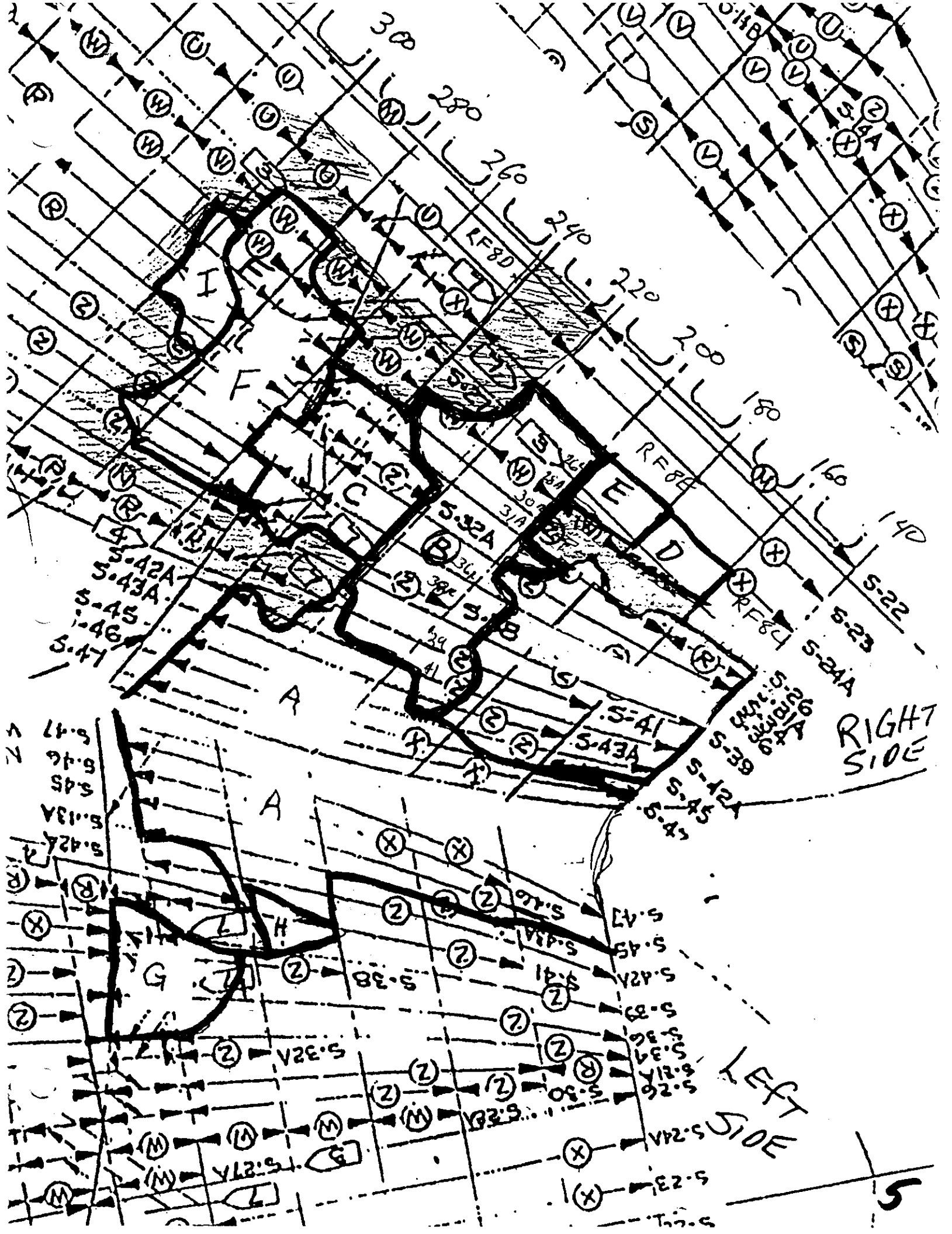
S-32A STA 200-220 + 3" AFT, FLATTENED & CRACKED THROUGH.

S-36R STA 200-220 TWISTED, CRACKED THROUGH @ STA 220 + 1" AFT

S-38 STA 220 - 14" SKIN SEPERATED & RIPPED

S-39 8" FWD STA 200 BENT & FLATTENED & MANGLED 18" AFT OF STA 220.

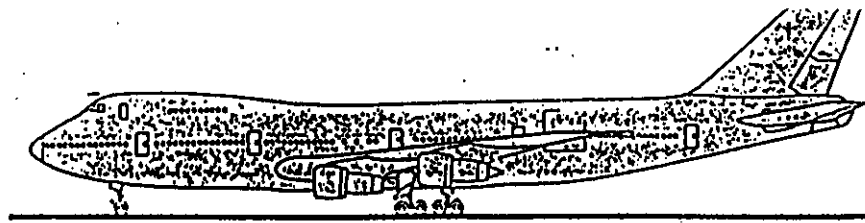
S-41-R 12" FWD OF STA 200 - 18" AFT OF STA 200 BENT & TWISTED, MANGLED.



RIGHT SIDE

LEFT SIDE

5



LCU 71 LF30

TARGET # _____

COORD: LAT 40

LONG 7

DEBRIS FIELD

LF30A - TAG# ? Field#

30B

30C - B078

30D

30E

30F B204

30G

30H

30I

LF30 C (R)
TAG B078

Piece of Fuselage measures 3'2" x 3'6", Bent outward & inward jagged edges @ S-34R STA 260 SKIN IS SEPERATED VERTICALLY DOWNWARD PASS S-38R

FRAME 240 MISSING

STRINGERS S-26-R TO S-38

S-26R STA 240 EXTENDS 8" AFT SKIN RIPPED & S-26R FLATTENED

S-31A 14" FWD STA 240 FLATTENED

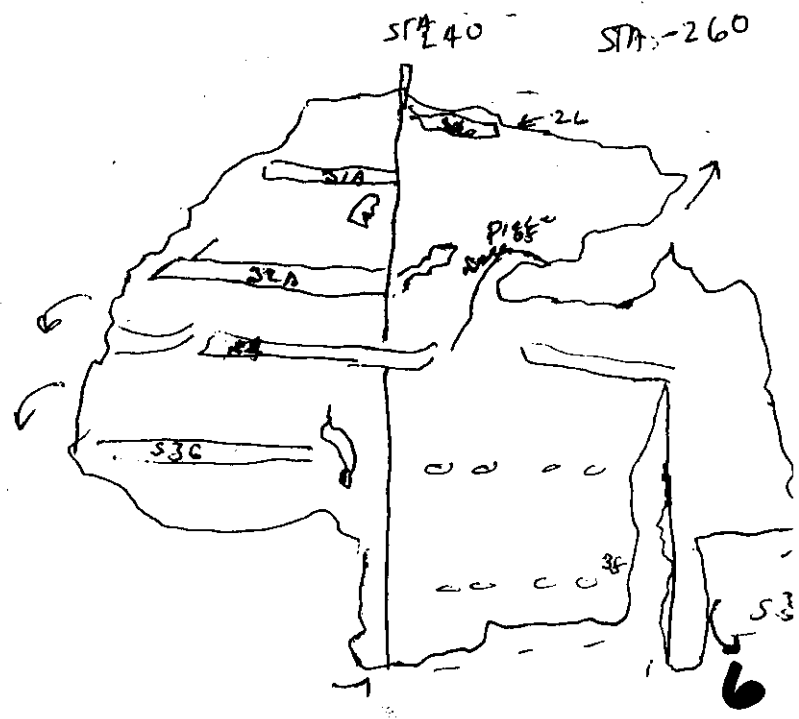
S-32A STA 240 FLATTENED & TWISTED EXTENDES 18" FWD STA 240 & 5" AFT

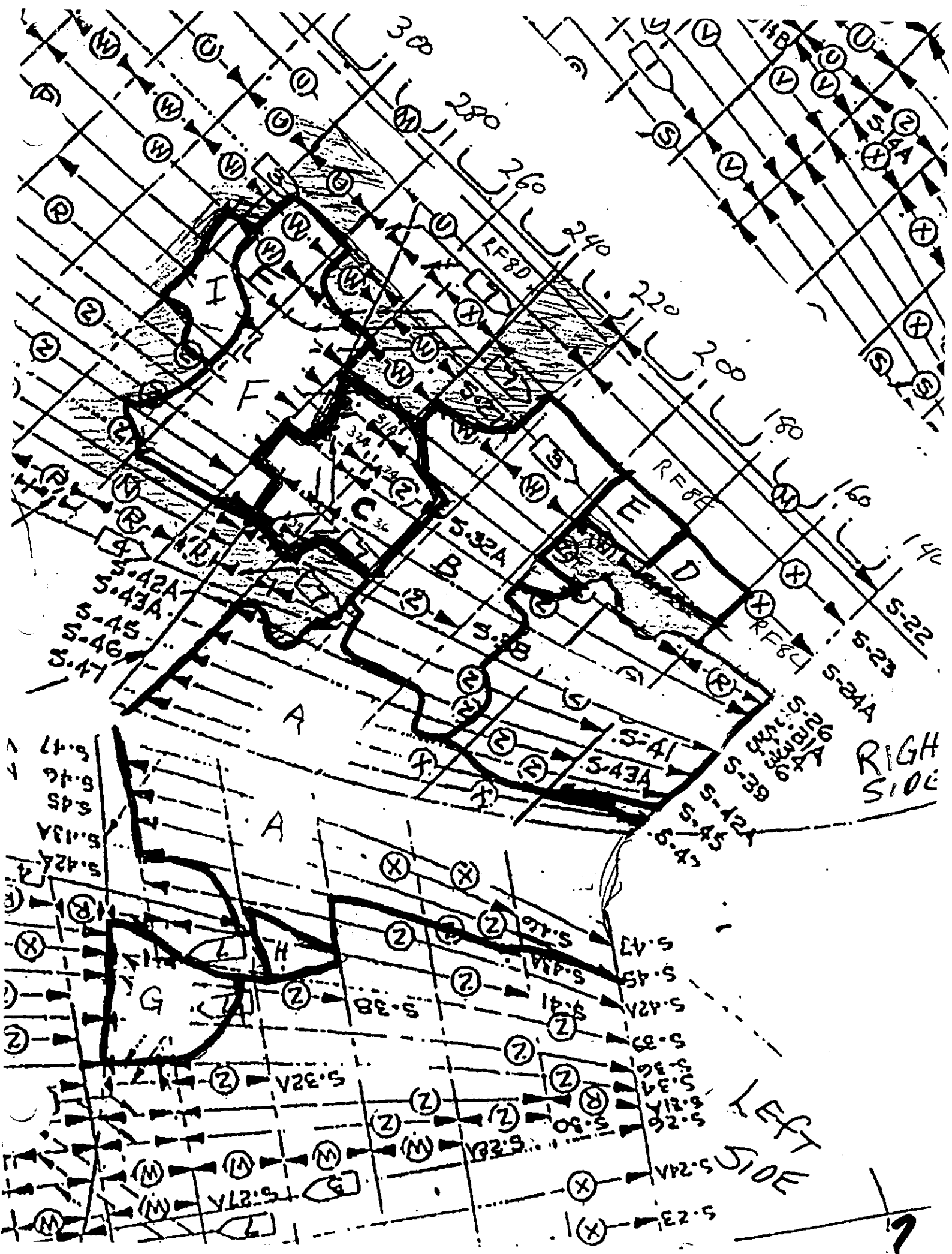
S-34 EXTENDES 16" FWD OF STA 240 & 5" AFT FLATTENED, BEF AWAY FROM SKIN CRACKED & MANGLED.

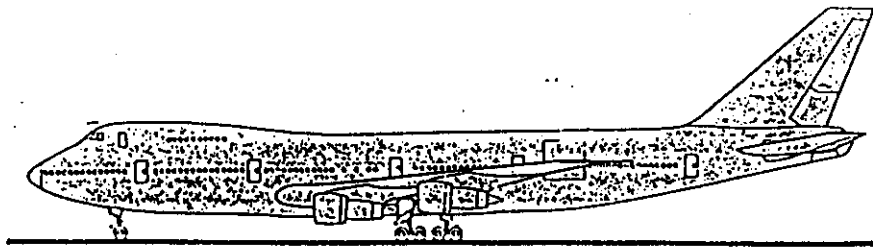
S-36 EXTENDES 14" FWD STA 240 SEVERED 3" AFT STA 240 MISS AFT.

S-38R MISSING

STEVEIC
FAA







LOG # LF 3

TARGET # _____

COORD: LAT 40

LONG 72

LF30A - TAG# ? Field#

30 B

30C - B078 1

30 D

30 E

30 F B204 1

30 G

30 H

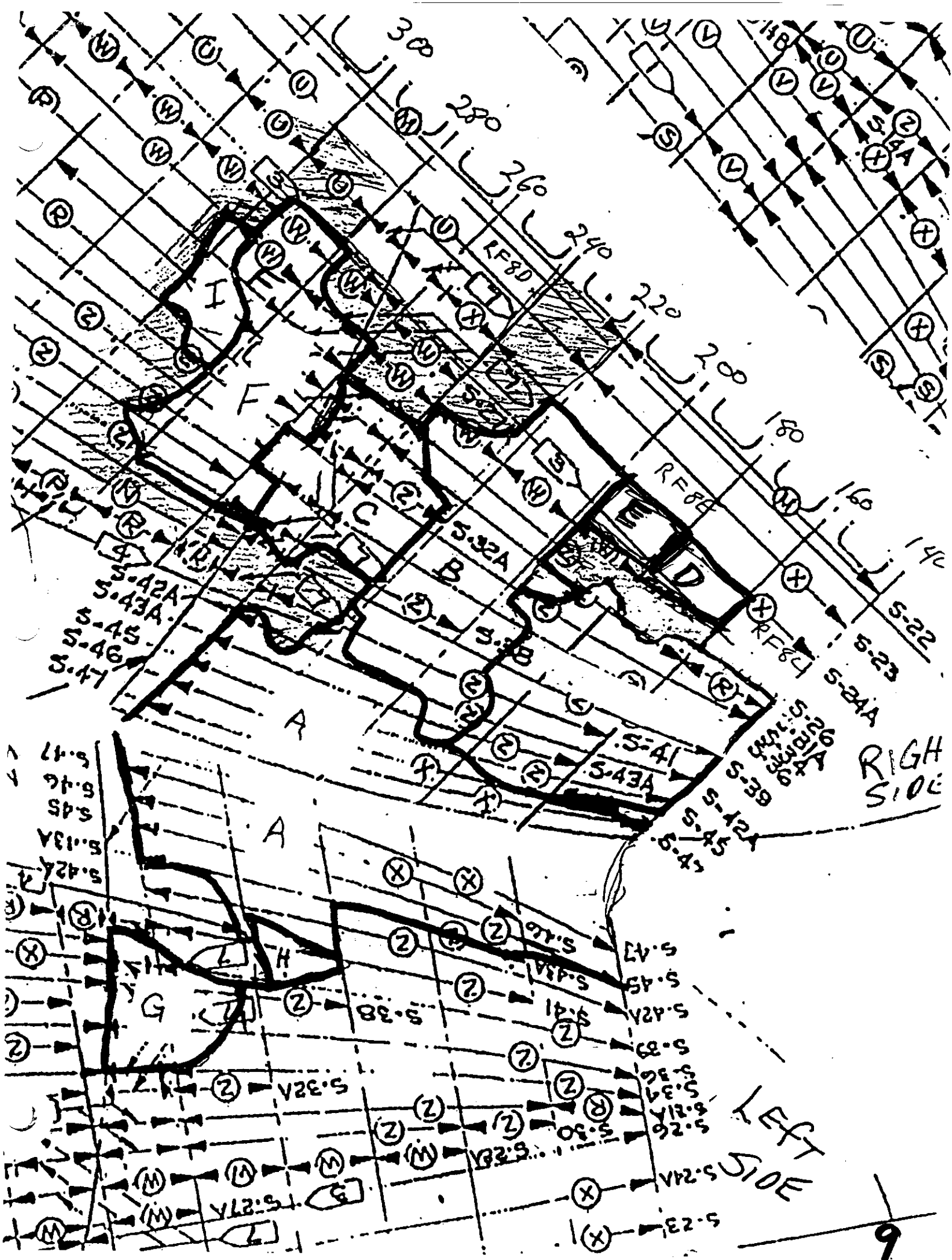
30 I

DEBRIS FIELD

LF30 D (R)

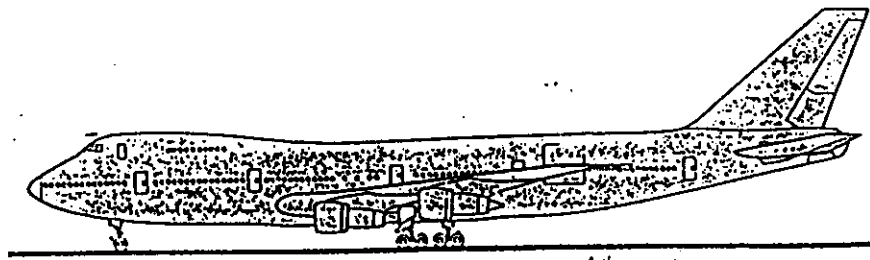
TAG # ?

SMALL PIECE OF FUSELARGE MEASURING
19" X 14" BETWEEN STA 160-180
STRINGER 26.R MISSING FROM SKIN
3 RIVETS MISSING FWD.
PIECE CURLED OUTWARD & JAGGERED
EDGES.



RIGHT SIDE

LEFT SIDE



LOG # LF

TARGET # _____

COORD: LAT 40

LONG 7

- LF30A - TAG# ? Field#
- 30B
- 30C - B078 1
- 30D
- 30E
- 30F B204 1
- 30G
- 30H
- 30I

DEBRIS FIELD

LF30 E (R) TAG# ?

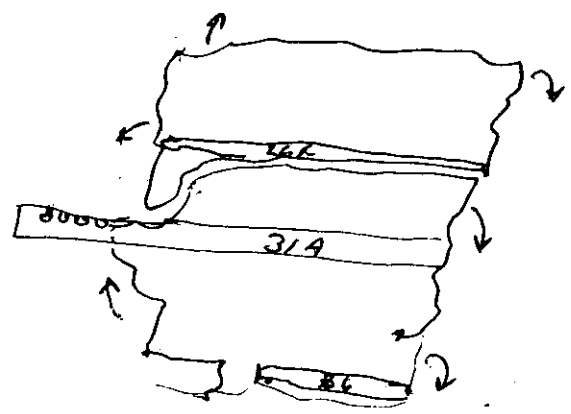
2 SMALL PIECES OF FUSelage MEASURING
21" x 22 1/2" BETWEEN STA 180 - 200
STRINGERS 26 R - S 36 R

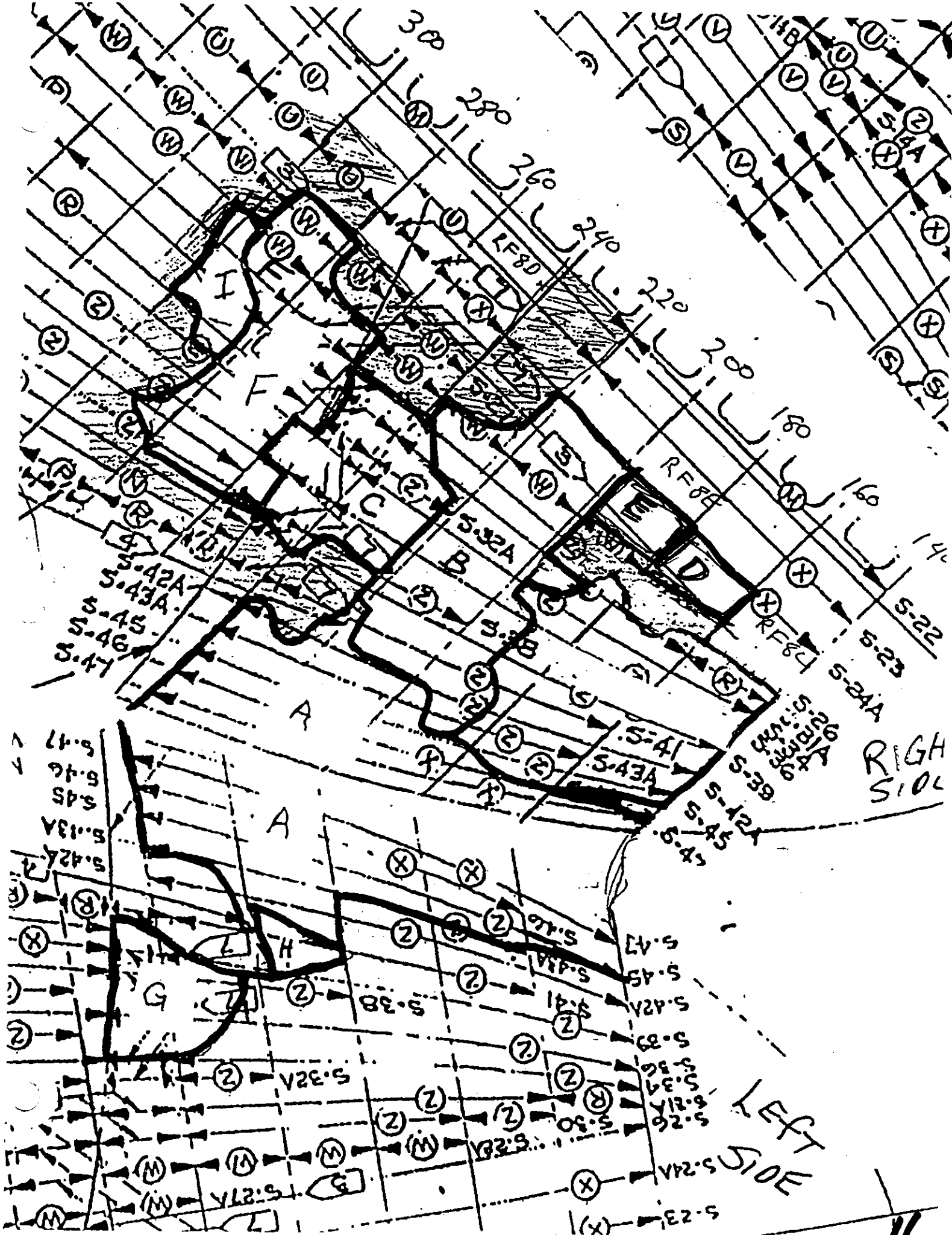
S-26 MISSING FROM SKIN

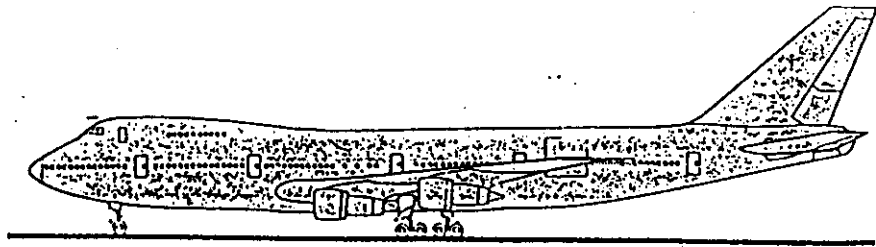
S-31A FLATTENED & SEVERED. 3" ASL

FWD PIECE 4 RIVETS MISSING
PIECE CURLED OUTWARD & JAGGERED
EDGES.

S-36 5" ATTACHED TO SKIN - FLATTENED







LOG # LF 3

TARGET # _____

COORD: LAT 40

LONG 72

LF30A - TAG# ? Field#

30 B

30C - B078

1

30 D

30 E

30 F B204

1

30 G

30 H

30 I

**LF30 F(R)
TAG # B204**

DEBRIS FIELD

STATION 260-280 +

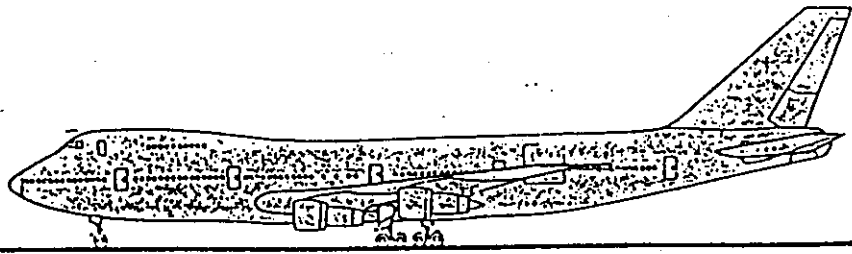
STRINGERS 28A-37

THIS SECTION MEASURES 66" x 27" &
ENCOMPASSES STA 260 & 280 BOTH FRAMES
(ARE NONE EXISTENT.)

STRINGERS 28A-37 ALL ARE FRACTURED &
FLATTENED & SEVERED.

PIECE IS IN A V SHAPE ALMOST FLATTENED,
MANY RIPS & HOLES IN SKIN, PIECE ROLLED
OUTWARD & INWARD

STEVE
FAB



LOG # LF
 TARGET # _____
 COORD: LAT 40
 LONG 72

- LF 30A - TAG# ? Field#
 30B
 30C - B078 1
 30D
 30E
 30F B204 1
 30G
 30H
 30I

DEBRIS FIELD

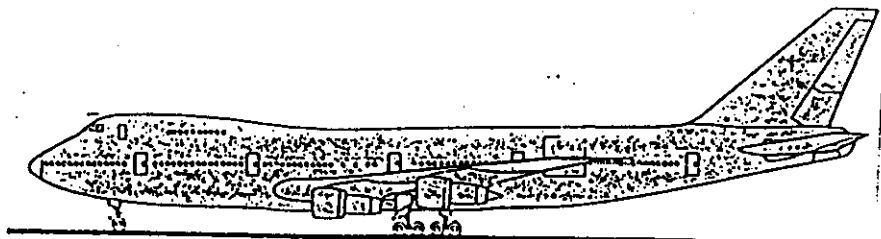
LF 30 G (L)
TAG# ?

STATION 240 + FWD 20"
 STRINGERS 34-36-38-39
 PIECE OF FUSELAGE MEASURES 27" x 30"
 STATION 240 EXTENDS 26" UPWARD & 8"
 DOWNWARD FROM PIECE OF FUSELAGE
 SKIN IS CURLED & MANGLED WITH JAGGED
 EDGES.
 FRAME AT STA 240 MISSING ALL STRINGERS
 ARE DEFORMED & FLATTENED

STEVE
 FIA

BA
 10/29/96

Tom
 10-29-96



LOG # LF 30

TARGET # _____

COORD: LAT 40

LONG 72

LF 30A - TAG# ? Field#

30B

30C - B078 1

30D

30E

30F B204 1

30G

30H

30I

LF 30 H (L)

TAG# ?

DEBRIS FIELD

PIECE OF FUSELAGE IS SMALL - 18" X 16"

ENCOMPASSES STATION 220 &

STRINGERS 39L & 41

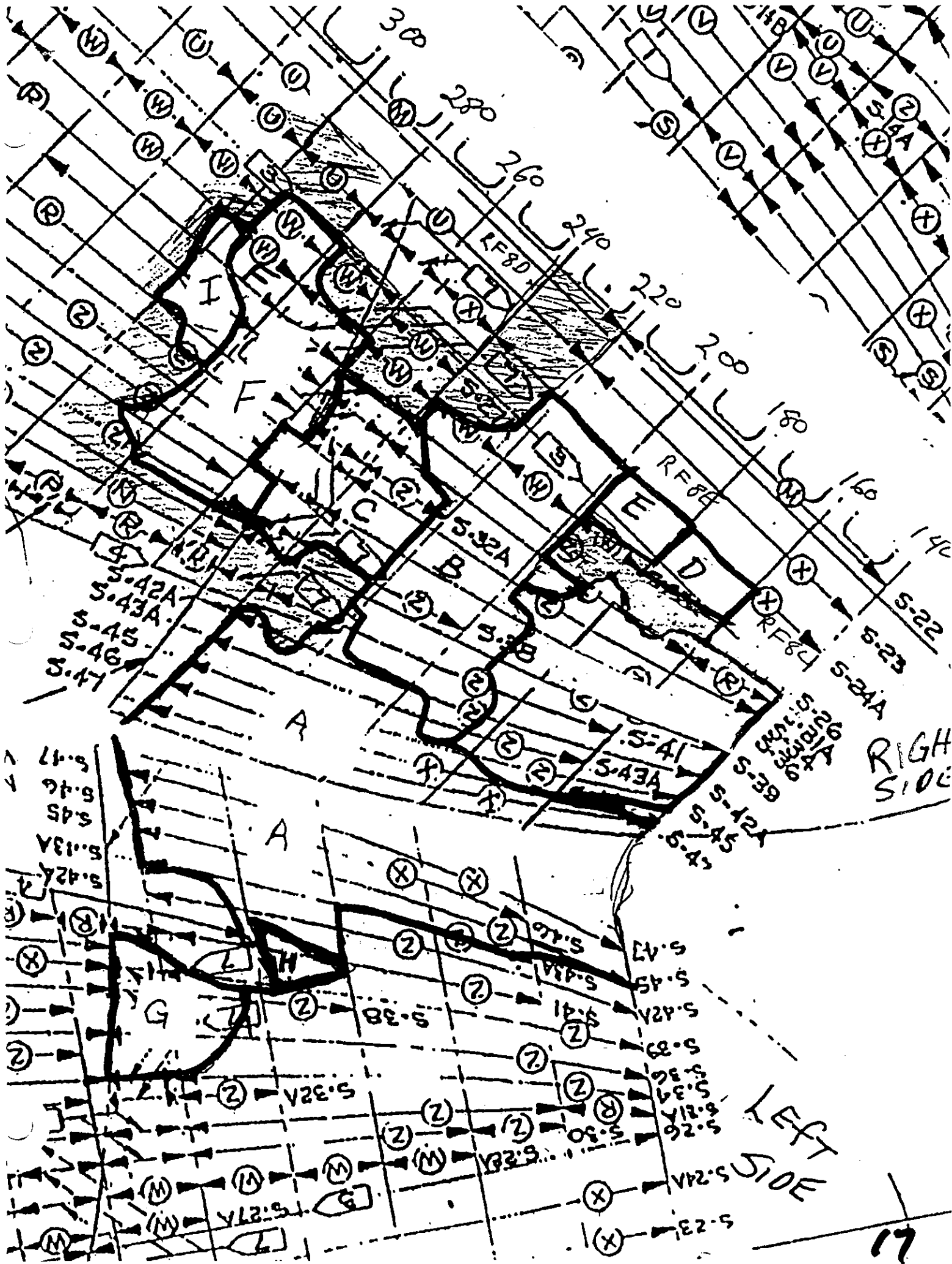
FRAME AT STA 220 - IS MISSING

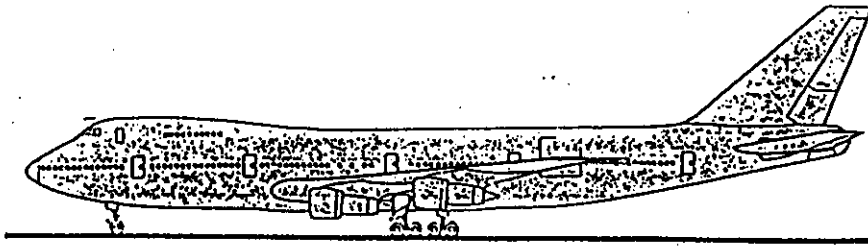
STRINGERS 39L & 41 BOTH ARE MISSING FROM SKIN.

CURLED AROUND TO A V SHAPE

STEVE K

FAA





LOG # LF30

TARGET # _____

COORD: LAT 40

LONG 72

LF30A - TAG# ? Field#

30B

30C - B078 1

30D

30E

30F B204 1

30G

30H

30I

DEBRIS FIELD

LF30 I (R)

PIECE MEASURES 24" x 20"

Station 300 MISSING FRAME

STRINGER 30 MISSING

STRINGER 34 FLATTED 3"

PIECE CURLED OUTWARD & JAGGED EDGES

STEVE FAB

