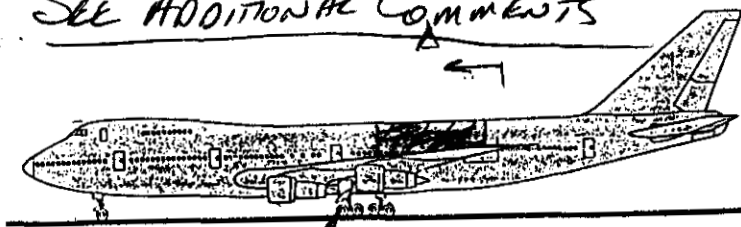


SEE ADDITIONAL COMMENTS



LOG # LF-2

RFB, 46
SDG

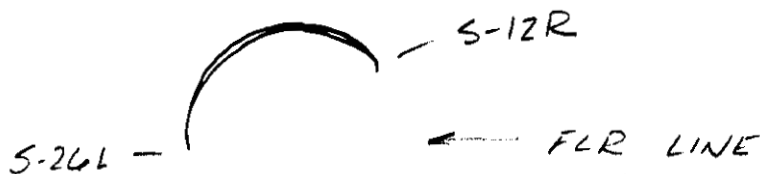
TARGET # GREEN TAG # C002

COORD: LAT 40° 39' 46" N (1)

LONG 72° 37' 28.6W

DEBRIS FIELD 1

FUSELAGE SKIN AND STRINGERS
STA 1394 - 1880
STR 26L - 12R



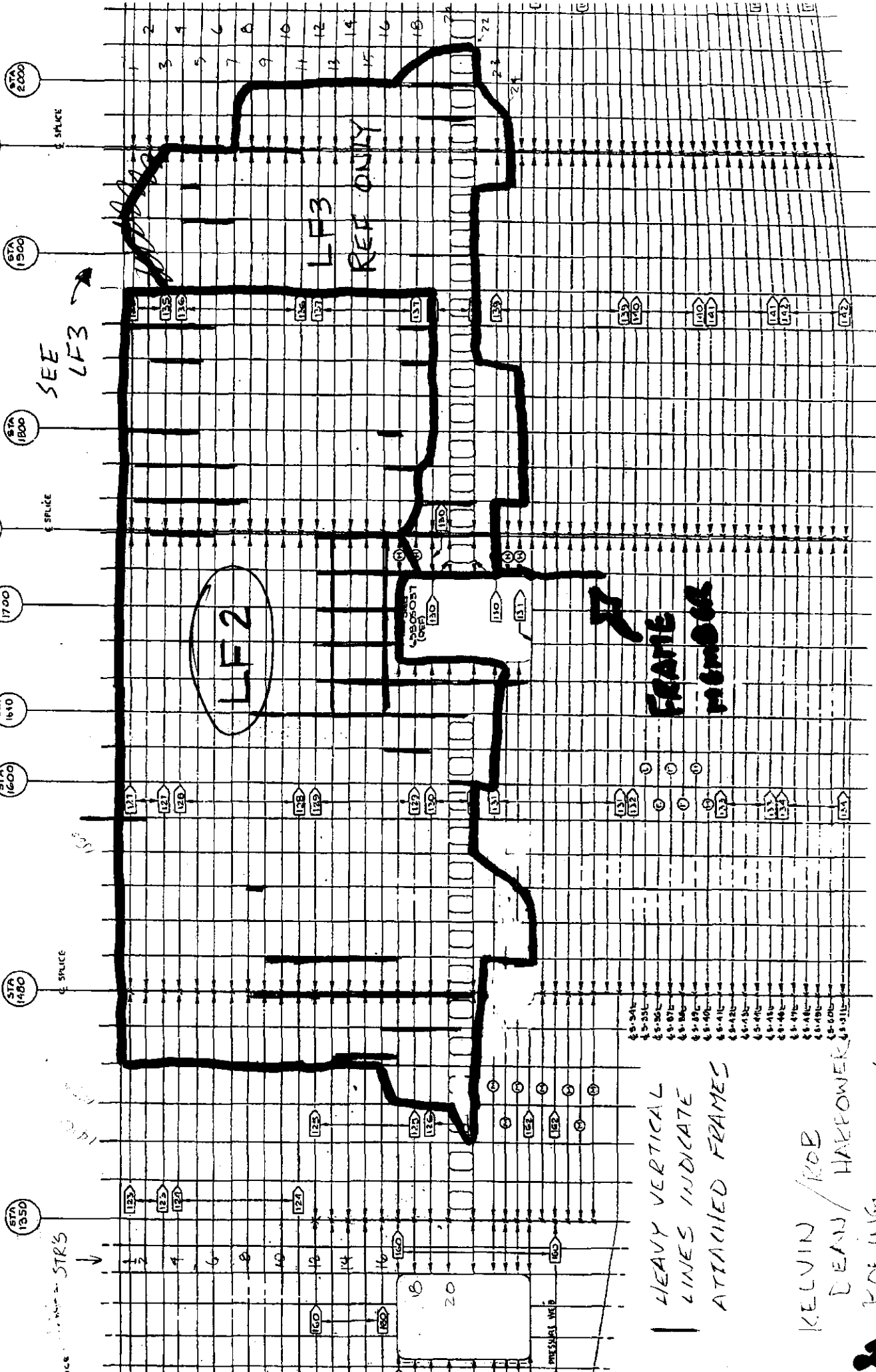
VIEW A-A

UNIT COMPRISED OF SKINS PLUS STR'S WITH
A FEW FRAMES ATTACHED - SEE NOTES

REFER FIRE AND EXPLOSION GROUP NOTES FOR FIRE DAMAGE

R. Brackett IAM 10/23/96
Lou Zullo FAA 10/21/96
M. & P. ... JWA 9/29/96
R. Hanauer - Boeing
8/4/96

LEFT SIDE



HEAVY VERTICAL
LINES INDICATE
ATTACHED FRAMES

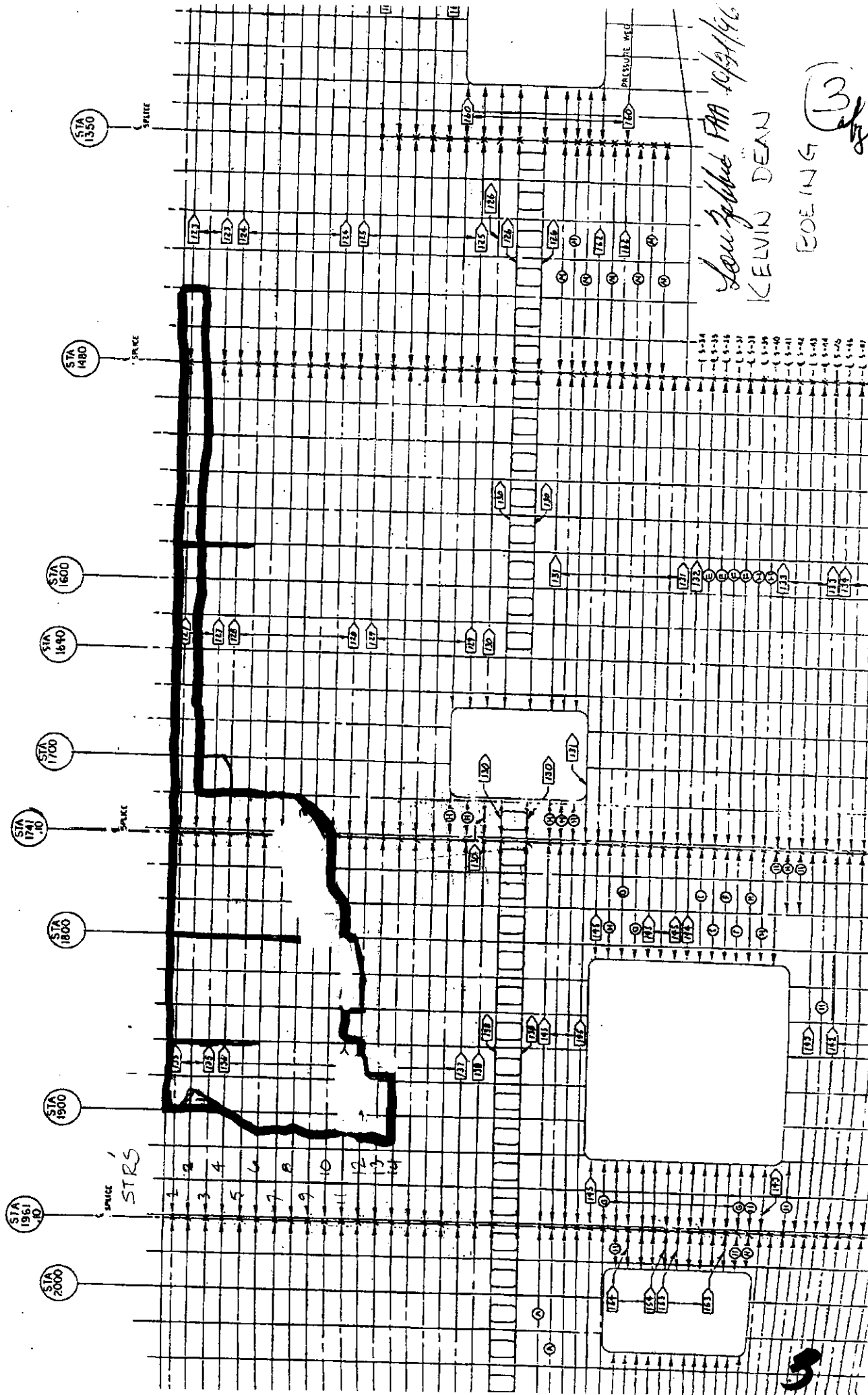
KELVIN / ROB
DEAN / HARPOWER

DEVELOPED VIEW -
LEFT SIDE
SCALE: 1"

SEE JOB LF3 FOR THAT PANELS WRITE-UP

RIGHT SIDE

LFZ



LF-2 FUSELAGE SKIN

RECU'D AT HANGER 8/3

LOC'N CODE = GREEN TAG # C002

(4) 8

LAT 40° 39' 46" N

LONG 72° 37' 28.6 W

DERIS FIELD # 1

STA 1394 - 1880

STR 26L - 12R

→ PANEL IS CLEAN AND FREE OF SOOT / ASH

→ SKIN IS FREE OF SHEAR WRINKLES

→ UNIT HAS 11½ WINDOW FRAMES

→ DOOR #4 FWD EDGE FRAME AND REVEAL IS SEVERED
JUST BELOW STOP #2

→ DOOR STOP BACK-UP INTERCOSTALS ARE INTACT AT
STOPS # 5-9 / THE INTERCOSTALS AT STOPS 5 & 6
ARE DEFORMED WITH THE INNER CHORD PUSHED
UPWARDS

→ PUNCTURE'S

INW'D PUNCTURE AT STA 1560 - 1580, STR 17-16
LENGTH ≈ 20"

OUTW'D PUNCTURE AT STA 1525, STR 12¾ L = 2"

INW'D PUNCTURE AT STA 1525, STR 10-9, L = 6"

OUTW'D PUNCTURE AT STA 1765, STR 5-6, 6x4 AREA

OUTW'D PUNCTURE AT STA 1812, STR 9¾ L = 1"

OUTW'D PUNCTURE AT STA 1832, STR 3½ L = 2"

John Zuber/FAA
10/24/96

4

LF-2 FUSELAGE SKIN

→ FAILURE PLANES
FRACTURE RD 12/5/96

(5) 8

~~NET TENSION FAILURE~~ ALONG RIVET LINE AT;

ALONG STA 1438, STR 13L - 1R

ALONG STR 1R, STA 1480 - 1460

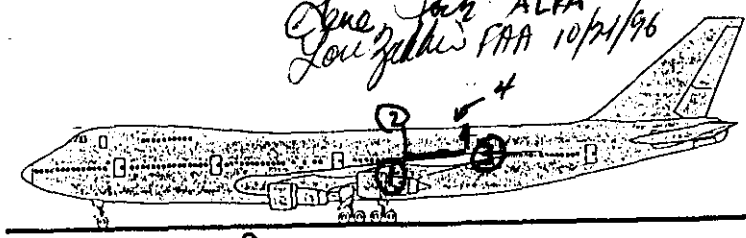
STR 2R, STA 1620 - 1700

STR 14R, STA 1880 - 1905

STR 15L, STA 1755 - 1770

Low Ziller PAA
10/21/96

John J. ALPA
FAA 10/21/96



LOG # LF-2

TARGET # 2064.25

COORD: LAT 40° 39' 46" N

TAG LONG 72° 37' 28.6" W

DEBRIS FIELD GREEN USS GRASP

① FROM 22" FWD. OF STA. 1420 (2) STRINGER #19L FUSELAGE TORN DIAG. UPWARD TO STA. 1440 @ STRING. #13L. FUSE. TEAR PROCEEDS UPWARD ALONG STA. 1440 TO RIVET HOLES OF S-1R. (2) FUSE. TEAR PROCEEDS AFT FROM 22" FWD OF STA. 1420 (1) ALONG STRINGER 19L TO STA. 1460 - THEN DIAG. DOWNWARD 6" BELOW S-19L TO STA. 1500. TEAR THEN PROCEEDS DOWN TO S-15L @ STA. 1500 TO STA. 1540 - (2) 16L THEN DIAG. UP & BACK TO S-19L & STA. 1560. FUSE. TEAR PROCEEDS AFT ALONG S-19L TO A POINT 7" FWD OF STA. 1600 THEN DOWNWARD TO S-18L THENCE AFT TO THE PRI. DOOR FRAME MBR. 3" AFT OF STA. 1660 AND 3" BELOW S-18L. L-4 DOOR MISSING. FUSE. TEAR STARTS AGAIN 9" BELOW S-16L @ STA. 1720 (EXTERIOR DOUBLER PLATE REMAINS & EXTENDS DOWN STA. 1720 DOOR FRAME AN ADD'L. 5") AND RUNS AFT & UP DIAG. TO STA. 1740 THEN DOWN DIAG. TO S-15L 11" AFT OF STA. 1740. FUSE. TEAR RUNS AFT ALONG S-15L (RIVET HOLES - S-15L FRAME IS MISSING UNTIL 11" FWD STA. 1780)

NOTE: S-15L STARTS @ STA. 1500 - ENDS 7" AFT OF STA. 1520. S-16L STARTS @ STA. 1520 AND ENDS 7" AFT OF STA. 1580. S-18L STARTS 2" AFT OF STA. 1500 - ENDS 17" AFT OF STA. 1540 AND BEGINS AGAIN @ STA. 1600 AND RUNS TO BREAK @ PRI. DOOR FRAME L-4 DOOR. FUSE. TEAR THEN RUNS AFT & DWN. DIAG. TO STA. 1800 THEN RAGGEDLY BELOW S-18L TO A POINT 3" FWD OF STA. 1880. (3) TEAR PROCEEDS VERTICALLY TO S-1R. TEAR RUNS AFT ALONG S-1R (2) THEN DOWN DIAG. AND AFT 18" (2" FWD. OF STA. 1900) THEN FWD TO 13" AFT STA. 1880 @ S-3R THEN DIAG. DWN TO S-4R @ STA. 1900 THEN DOWN TO S-6R THEN AFT AND DOWN 3" AFT OF S-7R (1900) 5" AFT STA. 1900 @ S-8R, DOWN-AFT TO 9" AFT STA. 1900 (2) S-9R THEN DOWN-AFT TO 13" AFT STA. 1900 @ S-10R, 15" AFT STA. 1900 @ S-11R, 14" AFT STA. 1900 @ S-12R, 11" AFT STA. 1900 @ S-13R, THEN DIAG. DOWN & FWD TO STA. 1900 @ THE RIVET HOLES OF MISSING S-14R. (6) TEAR RUNS FWD ALONG MISSING S-12R TO STA. 1880 THEN VERTICALLY TO S-12R, FWD ALONG MISSING S-12R THEN DIAG. UP TO STA. 1840 (3" AFT

John J. ALPA
FAA 10/21/96

(-2-)
(LF-2)

Lucy Zeller FAA 10/31/76

7/8

TEAR RUNS DOWN & FWD DIAG. TO 3" BELOW S-12R (MISSING) THEN ALONG RIVET HOLES
THE MISSING S-12R (RIVET HOLES SHOW) TO STA. 1820. TEAR RUNS FWD ALONG
S-12R 5" THEN DIAG. UP & FWD TO A POINT 6" BELOW S-11R (RIVET HOLES) @
STA. 1800 THEN HORIZ. FWD TO 5" BELOW S-11R RIVET HOLES (FRAME STRIPS MISSING)
@ STA. 1780, TEAR RUNS FWD & UP TO A PT. 3" AFT STA. 1760 & 2"
BELOW S-10R RIVET HOLES, DIAG. DOWN TO STA. 1760 (SEV. TEARS & CURVING
OF FOSE. SKIN OUTWARD AROUND STA. 1760) TO STA. 1740 5" BELOW S-8R
TEAR RUNS VERTICALLY UP STA. 1740 TO S-9R THEN IN AN ARC
VERT. & FWD TO STA. 1720 @ S-8R RIVET HOLES (S-8R FRAMEWORK
MISSING @ STA. 1720). TEAR RUNS VERTICALLY UP ALONG STA. 1720 TO
S-1R & IS TAN VERT. DOWN ALONG STA. 1720 TO S-3R (5" BELOW),
TEAR RUNS HORIZ. ALONG S-2R RIVET HOLES TO 6" FWD. STA. 1600
THEN DIAG. UPWARD TO 5" BELOW S-1R @ STA. 1580 THEN
HORIZ. FWD TO 4" BELOW S-1R @ STA. 1560 THEN 8" FWD STA. 1580
DIAG. UP TO PT. 5 1/2" BELOW S-1L @ STA. 1540, THEN HORIZ
FWD. TO A PT. 10" FWD OF STA. 1520 & 4" BELOW RIVETS IN S-1L,
THEN DIAG. DOWN TO 7" BELOW S-1L @ STA. 1500 THEN HORIZ.
FWD. TO STA. 1480 AND 2" ABV. S-1R. TEAR DROPS 2" TO S-1R
RIVET HOLES & RUNS FWD HORIZ. TO STA. 1460 THEN DOWN 3"
BELOW S-1R @ STA. 1460 & HORIZ. FWD TO STA. 1440.
TEAR RUNS VERTICALLY UP FROM 2" BELOW S-1R @ STA. 1440 TO CROWN AND
DOWN VERTICALLY ALONG STA. 1440 TO 2" ABV S-13L @ STA. 1440,
THEN DIAG. DOWN AND FWD TO 16" FWD OF STA. 1440 @ S-16L,
THEN DOWN VERT. TO A PT. 17" FWD STA. 1440 @ S-18L, THEN DOWNWD.
TO A PT. 1 1/2" AFT OF STA. 1420 @ S-19L, THEN VERT. DOWN TO S-20L.
THE TEAR IS BROKEN OFF AT THE UPPER/AFT PART OF THE WINDOW
FWD OF STA. 1420 TO THE LOWER/FWD PART OF THE WINDOW FWD
OF STA. 1420, THEN DOWN DIAG. FWD 8"-10" - START POINT OF 1ST PAGE
TEAR

LF-2

Additional Comments

Page 8

A crease runs in a straight line from FS ~~1780~~¹⁸²⁰, stringer S ~~4B~~^{BR} to FS 1900, stringer 4B. This diagonal crease crosses the fracture sites of stringers 4B, 6B, 7B, and 8B. The skin above the crease is bent outward.

SD GREEN ALPA

03-14-96

John Zupko FAA
10/21/96

Rob Hanauer - TBC
12/5/96

[Signature] - ALPA
12-5-96

CT Hub 12-5-96
2AM

Neil Sewille - TWA
12-5-96
John Zupko FAA
12-5-96