

LOG # LF-160  
 TAG #  
 TARGET # Z 5121 (GREEN)  
 COORD: LAT \_\_\_\_\_  
 LONG \_\_\_\_\_

LBL 57.5  
 LONGITUDINAL FLOOR DEBRIS FIELD GREEN  
 BEAM STA 1240-1290

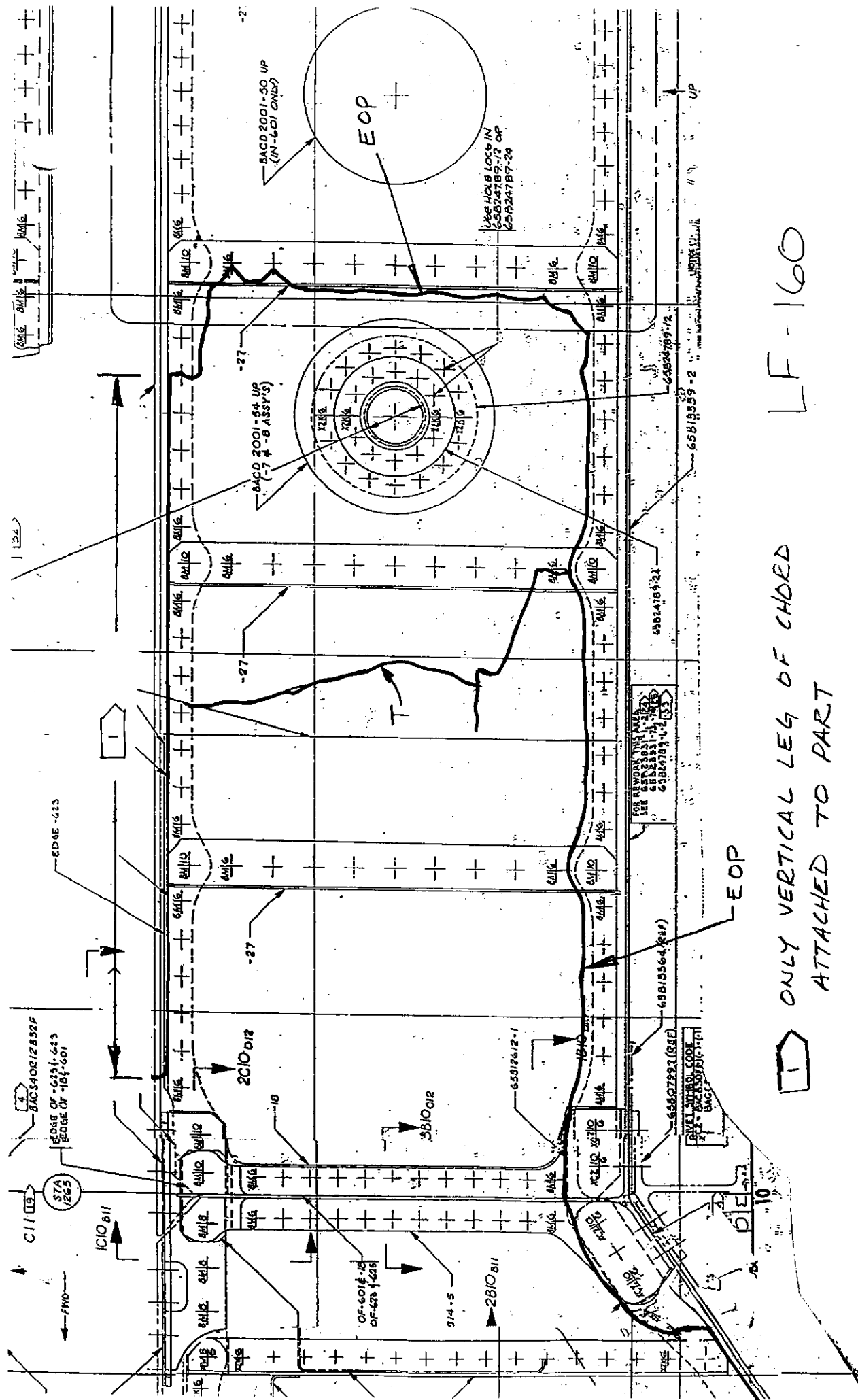
- \* FLOOR BEAM IS SHOWN ON SHTS 2 & 3, VIEW IS LOOKING INB'D
- \* LOWER EDGE FRACTURE FROM STA 1263 TO AFT END FOLLOWS PROFILE OF LOWER CHORD'S UPPER EDGE
- \* THE AFT MOST 12 INCHES OF PART IS BENT OUTB'D 10" APPROX
- \* ONLY VERTICAL FLANGE OF UPPER CHORD IS PRESENT FROM STA 1269 TO AFT END OF PART. AFT CHORD IS FRACTURED NEAR/ AT RADIUS TO END OF PART AT STA 1265. SPLICE ANGLES ARE CRACKED FOR APPROX. 1/2 THEIR LENGTH.
- \* FORWARD PORTION OF WEB IS FOLDED OVER; WITH THE STA 1260 STIFFENER ROTATED FWD @ 30° (WITH THE TOP STILL ATTACHED TO THE UPR CHORD); WEB BETWEEN STA 1250 & 1260 BENT OUTB'D & SLIGHTLY OVER THE STA 1260 STIFFENER.
- \* NO PENETRATIONS OF NOTE.
- \* PART IS DIRTY & MODERATELY SOOTED, WITH MORE SOOT ON THE INB'D SURFACE.
- \* PART MATES WITH LF-16B

Craig D. Johnson - ALPA  
 3-17-97

Brandon White  
 TWA 3/21/97  
 Dennis Santiago IAM  
 3-21-97

Tom Tudman  
 3-21-96 FAA

R. Hanover  
 3/5/97

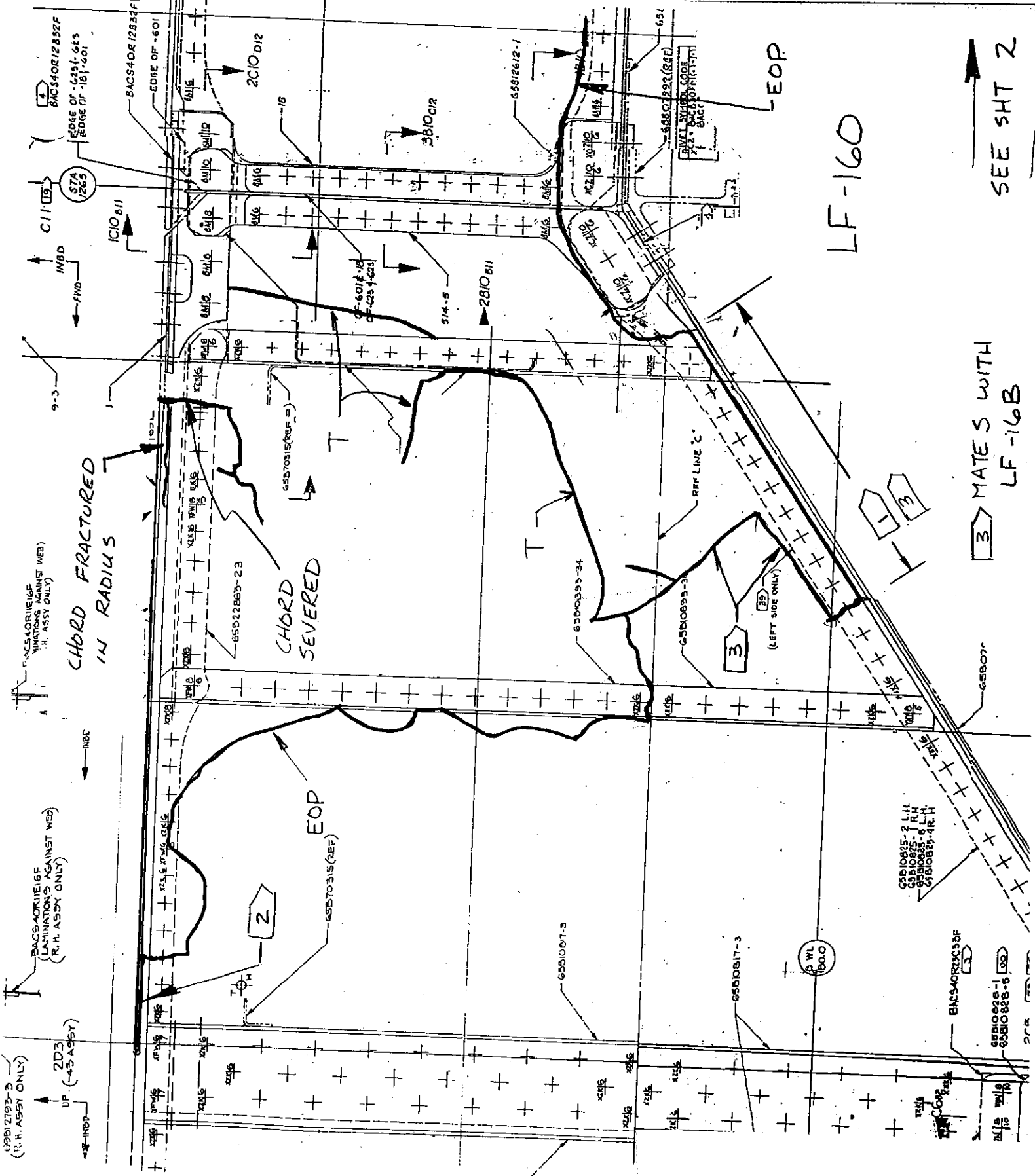


1 ONLY VERTICAL LEG OF CHORD ATTACHED TO PART LF-160

EOP = EDGE OF PART  
 T = TEAR IN WEB  
 2 ONLY HORIZONTAL FLANGE OF CHORD ATTACHED TO PART - SEVERED AT EXTRU. RADIUS

SEE SH3

SH2



CHORD FRACTURED  
IN RADIUS

CHORD  
SEVERED

EOP

EOP

LF-160

3 MATES WITH  
LF-16B

SEE SHT 2

12B12193-3  
(R.H. ASSY ONLY)

UP (-45 ASSY)

BACS40R1E1E  
(LAMINATION'S AGAINST WEB)  
(R.H. ASSY ONLY)

BACS40R1E1E  
(MINUS AGAINST WEB)  
(R.H. ASSY ONLY)

BACS40R1285ZF  
EDGE OF -601  
EDGE OF -101-401

BACS40R1285ZF  
EDGE OF -601

2

3

GSB10825-2 L.H.  
GSB10825-1 R.H.  
GSB10825-6 L.H.  
GSB10825-4R.H.

BACS40R1285ZF

GSB10825-1 L30  
GSB10825-6

SHT 3

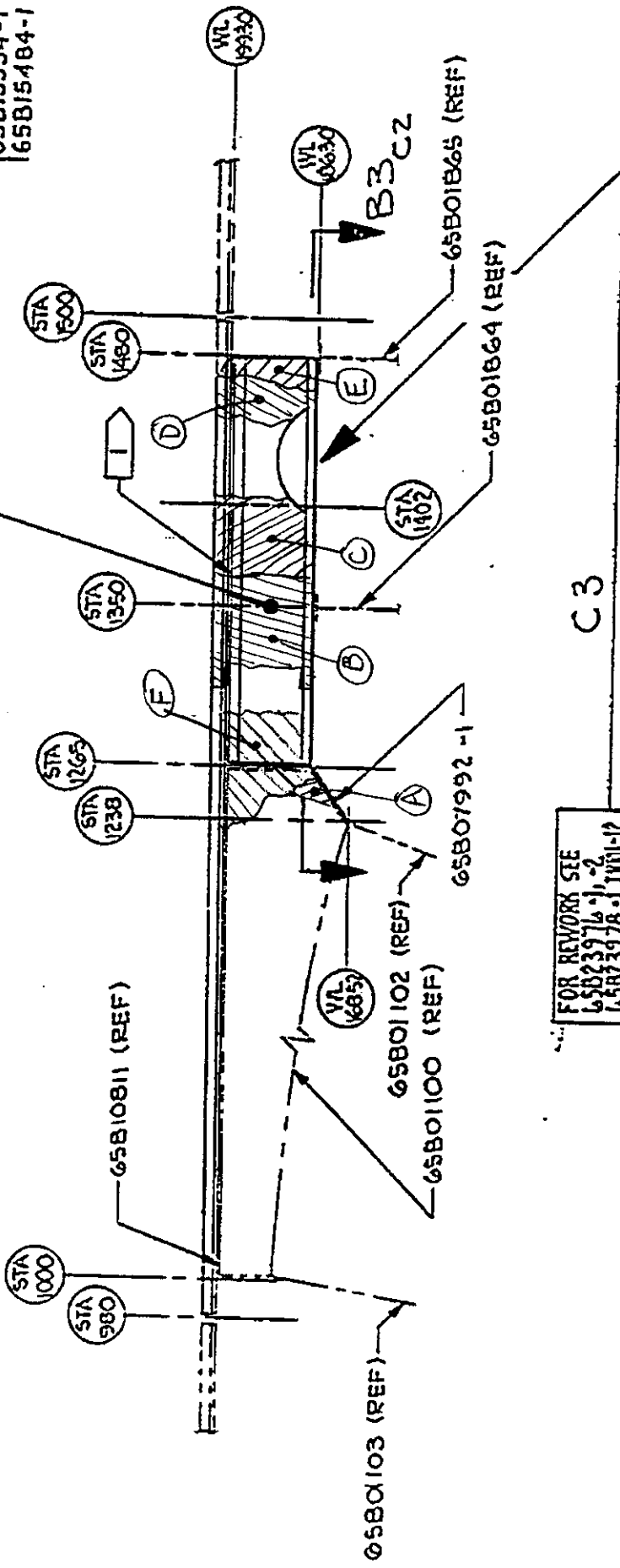
65B1334-55

FWD

FOR REWORK SEE  
65B23926-1, 2  
65B23978-101 THRU-108  
-91, 92, 169, 4-170

65B08268-1  
65B13353-1  
65B15483-1  
65B15483-55

65B08269-1  
65B13354-1  
65B15484-1



FOR REWORK SEE  
65B23976-1, 2  
65B23978-1 THRU-12  
65B2786-1, 2, 3, 4

C3

ITEM	LOG #
A	LF16B*
B	LF128
C	LF129
D	LF116*
E	LF130
F	LF160

UP

FWD

SCALE: NONE

\* PART OF REF

LBL 57.5  
FLRBM