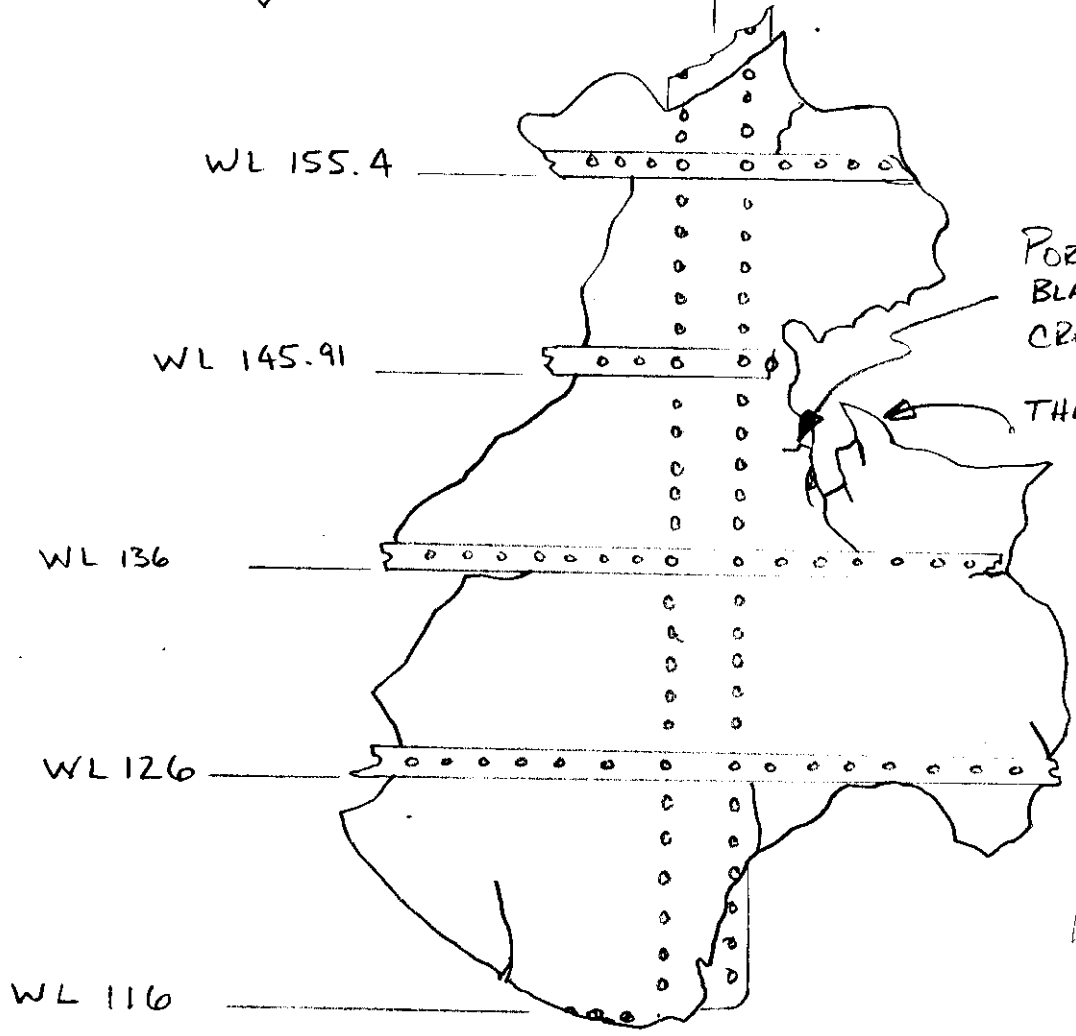
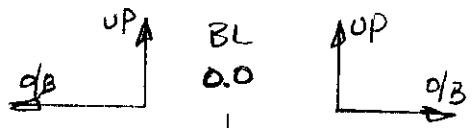
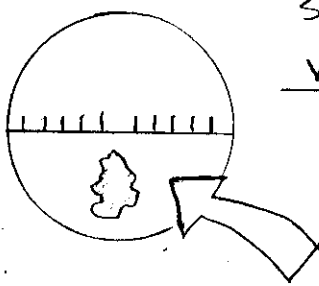


LOG # LF 152  
 TAG TARGET # C 2088  
 COORD: LAT \_\_\_\_\_  
 LONG \_\_\_\_\_

STA 1480 BULKHEAD  
 VIEW LOOKING FORWARD

DEBRIS FIELD \_\_\_\_\_



PORTION OF INSULATION BLANKET TRAPPED IN CRACK

THESE SECTIONS OF WEB ARE BENT FORWARD

*Leigh D. Johnson - FAA  
 3-21-97*

*James D. ... TWA  
 3-13-97*

*Bob Breneman  
 2/27/97  
 FAA*

\* NO INDICATION OF SOOTING OR PENETRATIONS ON BULKHEAD WEB.

\* ALL THE HORIZONTAL STIFFENERS ARE MISSING THE UPSTANDING LEG.

\* SEVERAL SMALL FRACTURES FROM EDGE OF WEB AND EXTENDING INTO THE PART. LOCATIONS SHOWN ON SKETCH.

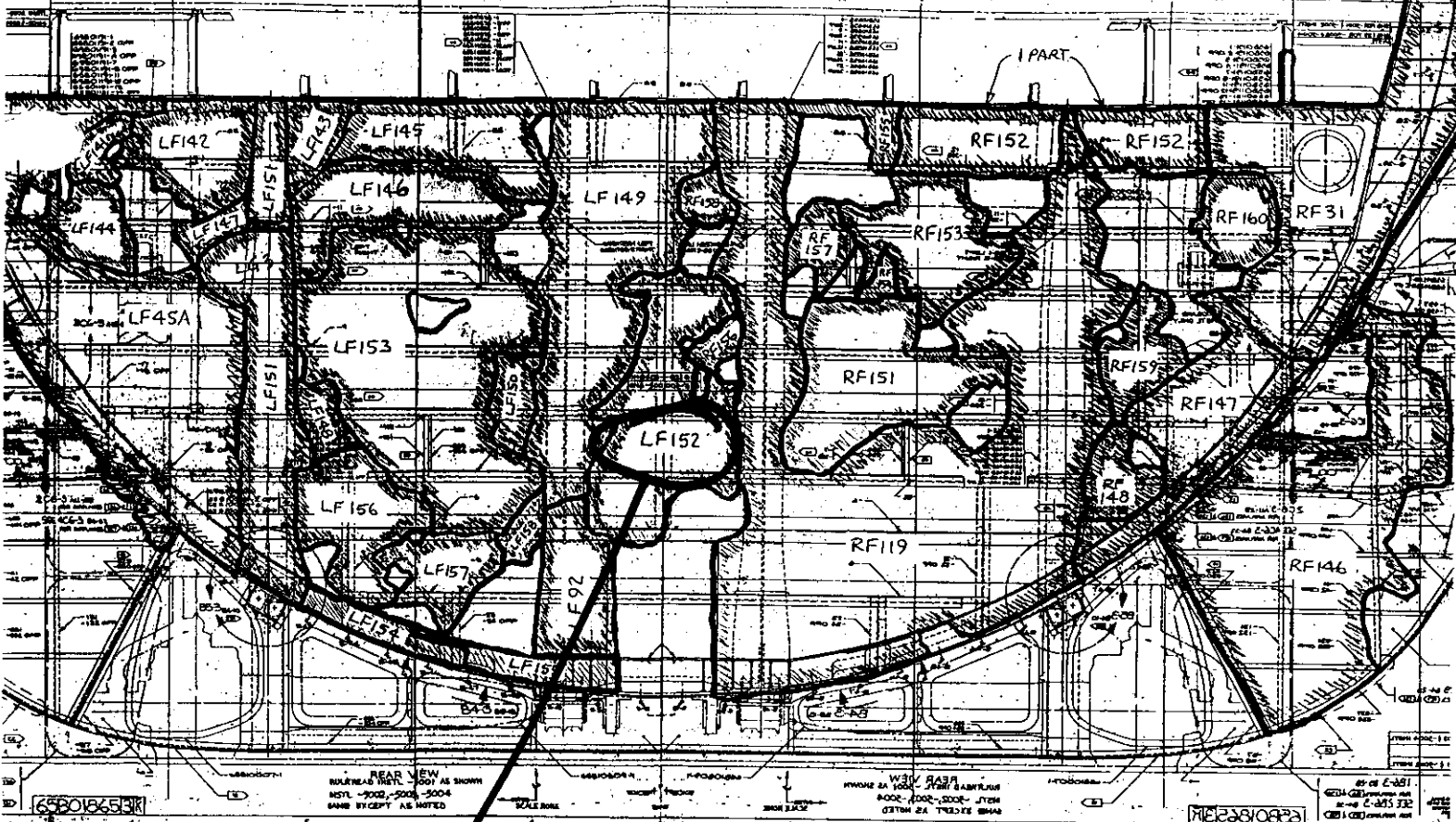
\* PIECE OF INSULATION BLANKET TRAPPED IN ONE FRACTURE AT LOCATION SHOWN ON SKETCH.

*Dennis Santiago  
 IAM 3-13-97*

*R. Harwood  
 3/22/97*

*Boeing*

STA 1480 BULKHEAD ROADMAP



← L → R

LOG#  
LF152