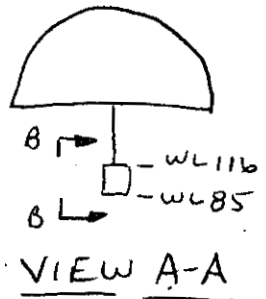


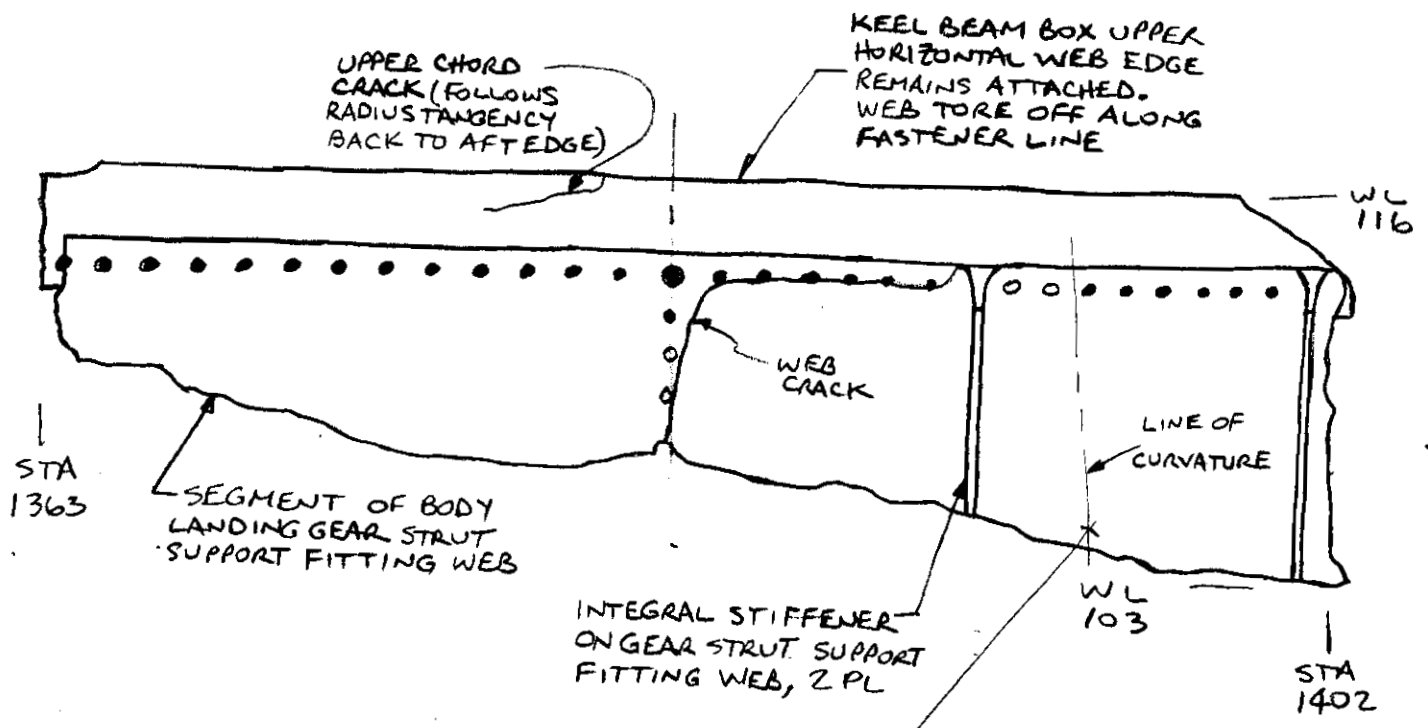
LOG # LF14H  
 TARGET # C2475 8-18-96-G  
 COORD: LAT \_\_\_\_\_  
 LONG \_\_\_\_\_

B. HOCKING  
 BOEING  
 3/6/97

DEBRIS FIELD GREEN



SEGMENT OF KEEL BEAM BOX, LBL 9.0,  
 WEB AND UPPER CHORD, STA 1363 TO 1402,  
 WL 103 TO WL 116



FWD ↑ UP  
 ←  
 LOOKING INBOARD  
VIEW B-B

Dennis Santiago IAM  
 3-26-97

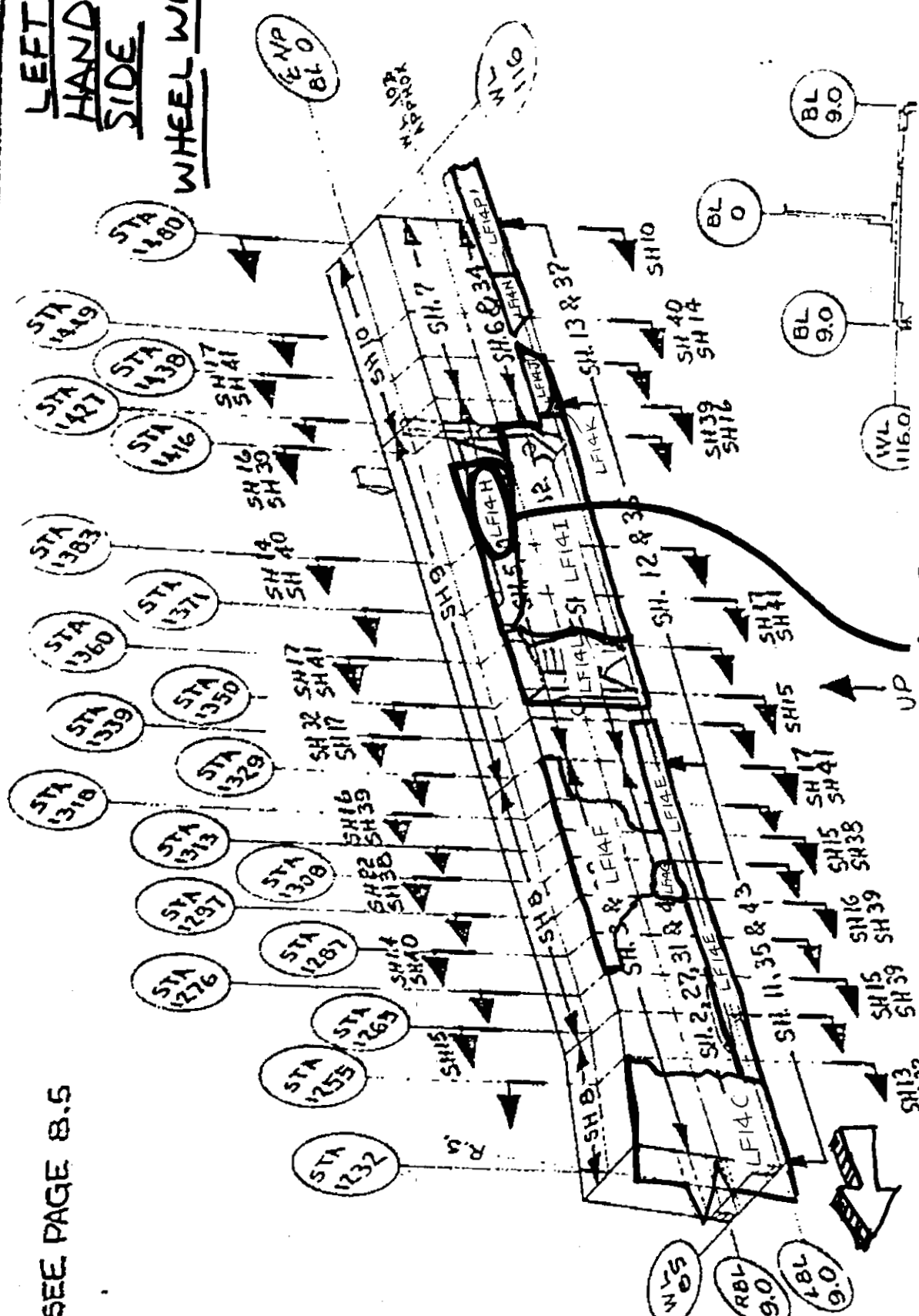
*B. Hocking*  
 TWA 3/6/97

V. Coen  
 ALAA 3/27/97  
 Tom Todino  
 FAA 3-27-97

1/2

SEE PAGE 8.5

**LEFT  
HAND  
SIDE**  
**WHEEL WELL**



**LOG #  
LF14 H**

LOG SHEET INDEX	10	11	12	13	14	15	16	17	18	19	20	21	22	23	24	25	26	27	28	29	30	31	32	33	34	35	36	37	38
-400	-415																												
7	8	9	10																										
7	8	9	10																										
7	8	9	10																										

2/2