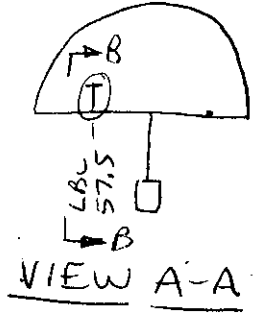


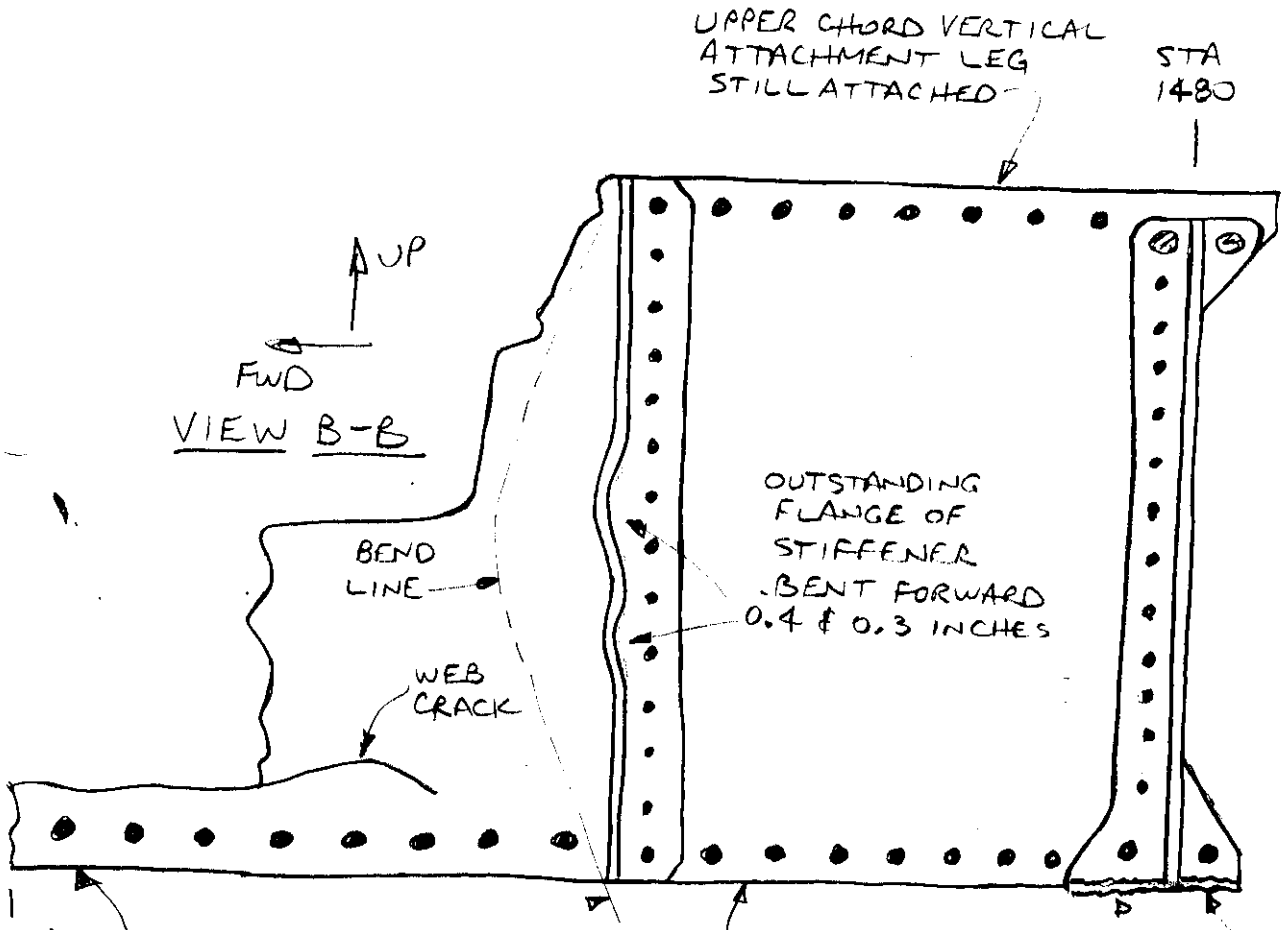
LOG # LF130
 TARGET # D2109
 COORD: LAT _____
 LONG _____

B. HOCKING
 BOEING
 2/28/97

DEBRIS FIELD WHITE



SEGMENT OF PRESSURE DECK FLOORBEAM
 STA 1461 TO 1480, LBL 57.5



FORWARD END OF
 SEGMENT BENT 3.5 INCHES
 TO THE LEFT SIDE
 OUT OF PLANE ALONG
 THE INDICATED BEND LINE.

STA 1480 STIFFENER
 LOWER END PADS
 BROKEN OFF.

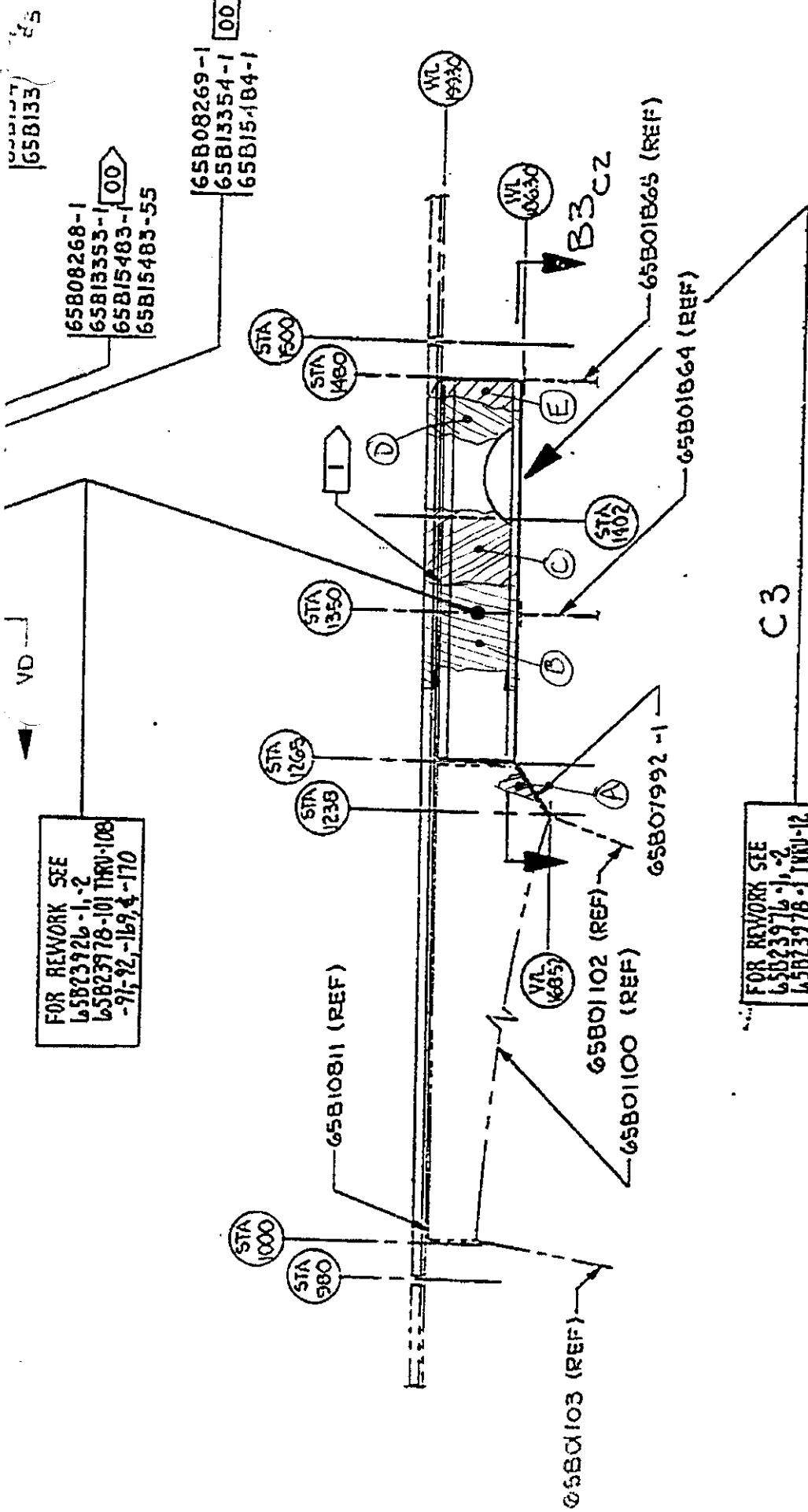
NO APPARENT SCORING OF
 EITHER INBOARD OR OUTBOARD
 SURFACES.

Dennis Hocking I.A.M.
 3-6-97

Yair D. Polans -ALFA
 -3-17-97

4-6-97
 TWA

Tom Tudino
 FAA 3-21-97/1



FOR REWORK SEE
 65B23926-1, 2
 65B23978-101 THRU-108
 -97, 92, -169, 4, -170

FOR REWORK SEE
 65B23976-1, 2
 65B23978-1 THRU-12
 65B24785-1, 2, 3, 4

ITEM	LOG #
A	LF16B *
B	LF128
C	LF129
D	LF116 *
E	LF130

UP
 FWD
 SCALE: NONE

* PART OF

LBL 57.5
 FLRBM

65B133

65B08269-1
 65B13354-1
 65B15184-1

65B08268-1
 65B13353-1
 65B15483-1
 65B15483-55

STA 1500

STA 1480

STA 1350

STA 1265

STA 1235

STA 1000

STA 980

WL 10030

WL 10050

B3 CZ

65B0165 (REF)

65B0164 (REF)

65B0192-1

65B0102 (REF)

65B0100 (REF)

65B0103 (REF)

C3