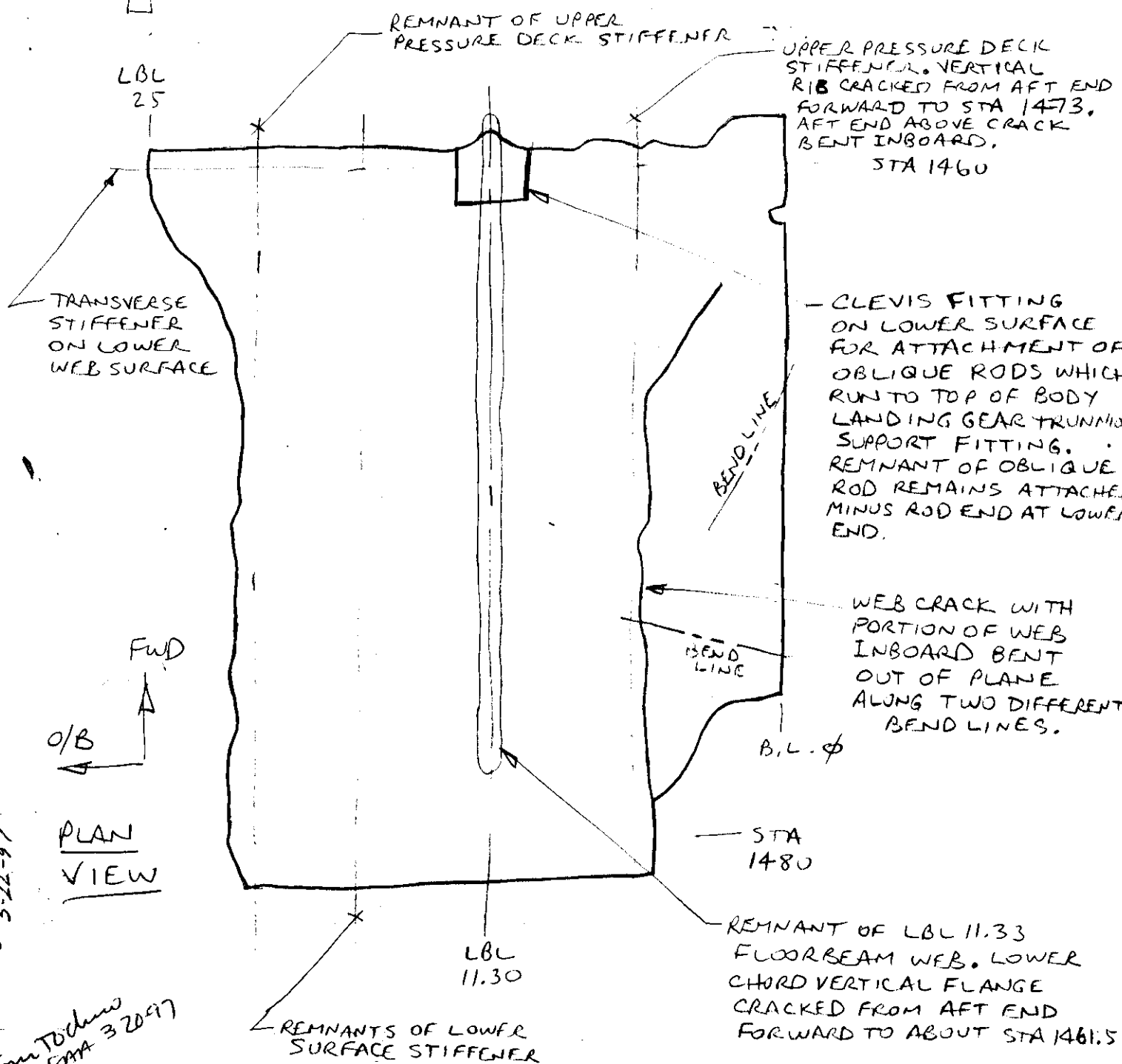
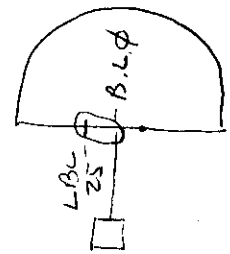


LOG # LF119  
 TARGET # DZ103  
 COORD: LAT \_\_\_\_\_  
 LONG \_\_\_\_\_

B. HOCKING  
 BOEING  
 2/22/97

DEBRIS FIELD WHITE

SEGMENT OF PRESSURE DECK WEB,  
 STA 1456 TO 1480, BL  $\phi$  TO LBL 25



Leigh D. Johnson - ALPA  
 3-22-97

Tom Tochner  
 FMA 3-20-97

Dennis Santiago IAM  
 3-3-97

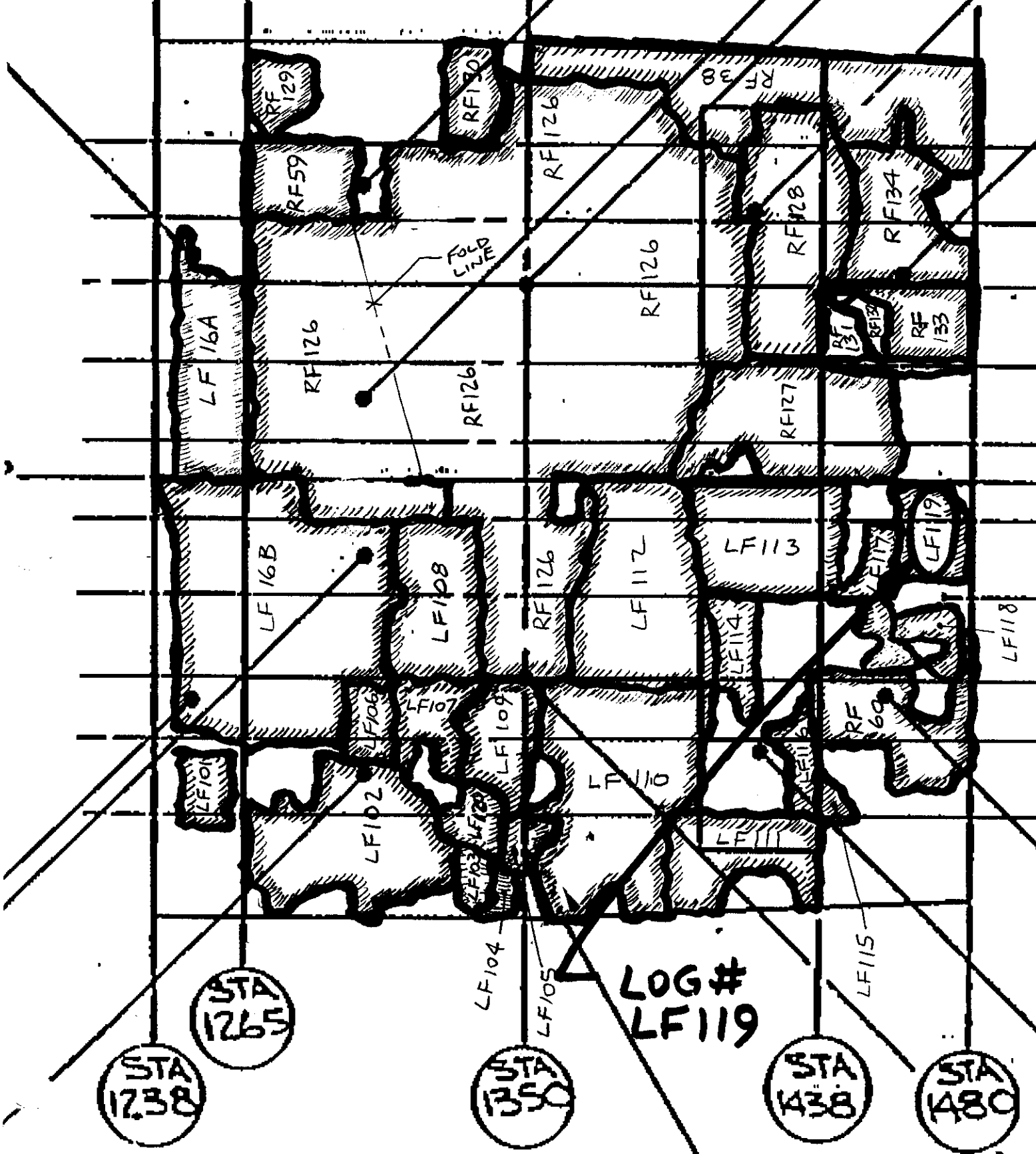
Greg Ball WA  
 3-19-97

NO APPARENT  
 SOOTING OF EITHER  
 UPPER OR LOWER SURFACE

1/2

65813364 - 2  
65813364 - 72

00



LOG #  
LF 119

STA 1738

STA 1265

STA 1350

STA 1438

STA 1480

2/2