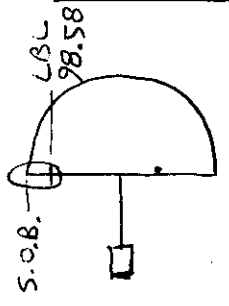


LOG # LF111
 TARGET # C 689
 COORD: LAT _____
 LONG _____

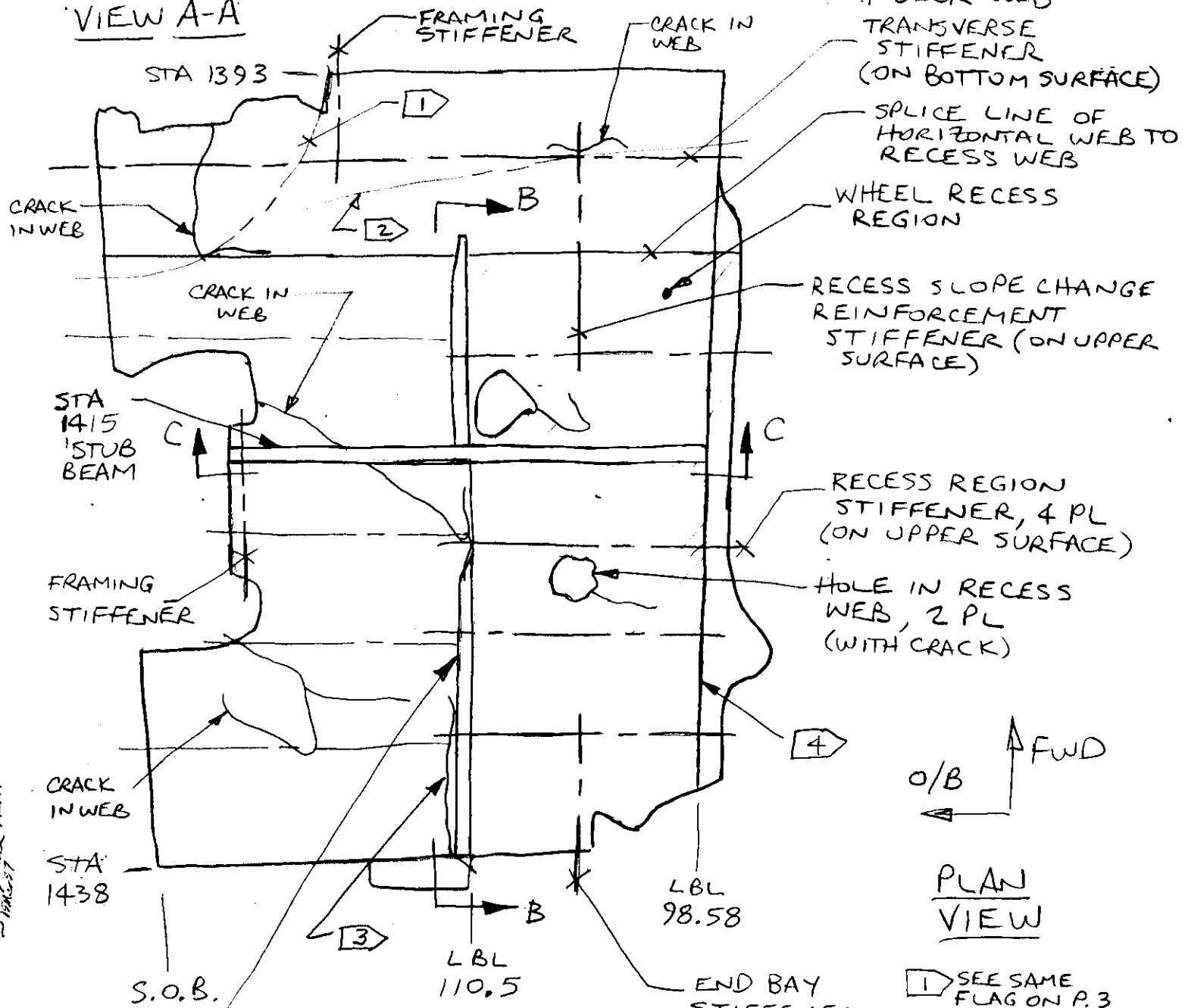
B. HOCKING
 BOEING
 2/21/97

DEBRIS FIELD GREEN



SEGMENT OF PRESSURE DECK
 WEB, STA 1393 TO 1438,
 LBL 98.58 TO S.O.B.

VIEW A-A



PLAN VIEW

- 1 SEE SAME FLAG ON P. 3
- 2 SEE SAME FLAG ON P. 3

- 3 SEE SAME FLAG ON P. 3

- 4 SEE SAME FLAG-ON P. 3

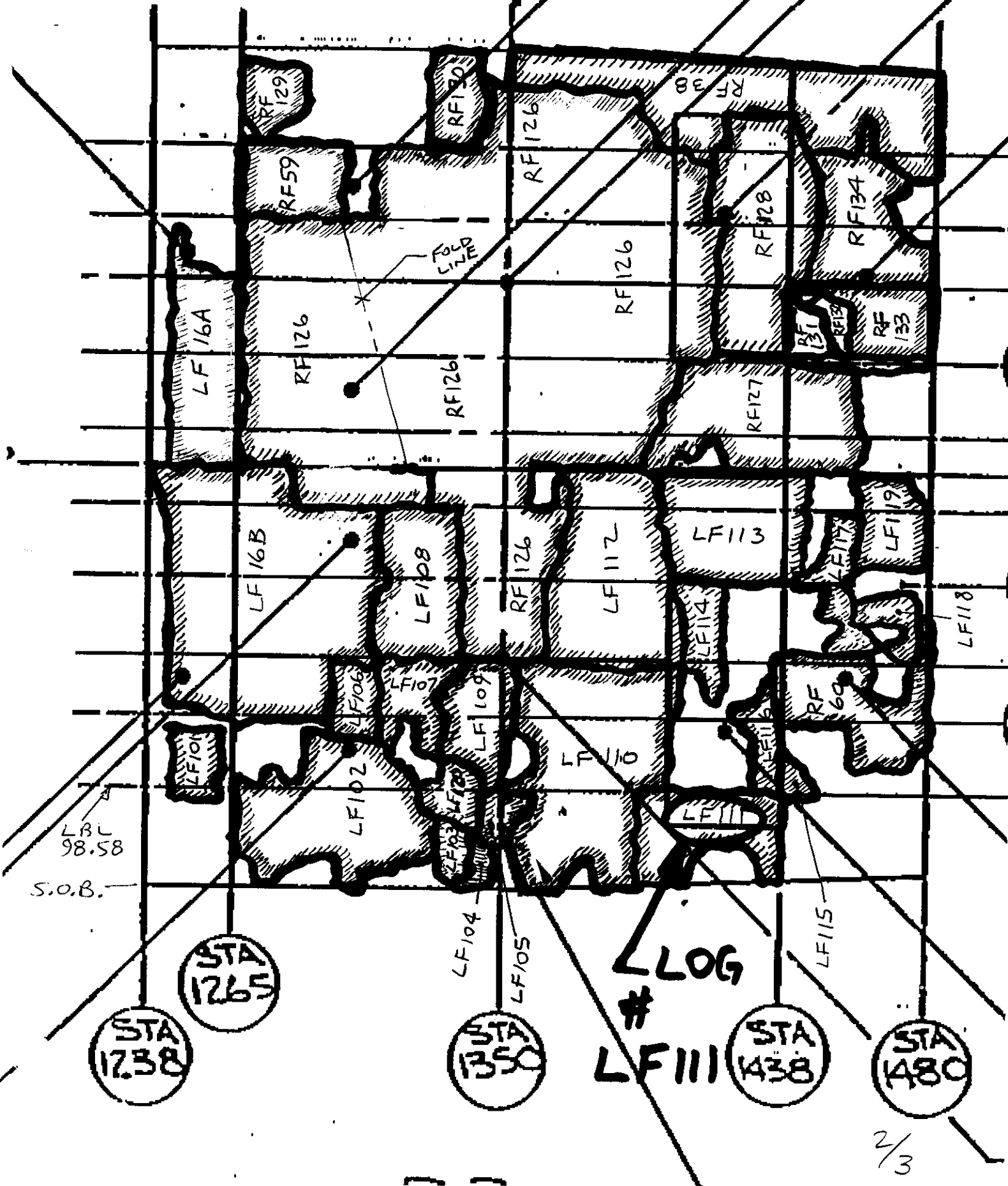
3-14-97
 Tom Truhovec
 FAA 3-27-97

SIDE WALL OF
 WHEEL RECESS

ALPHA

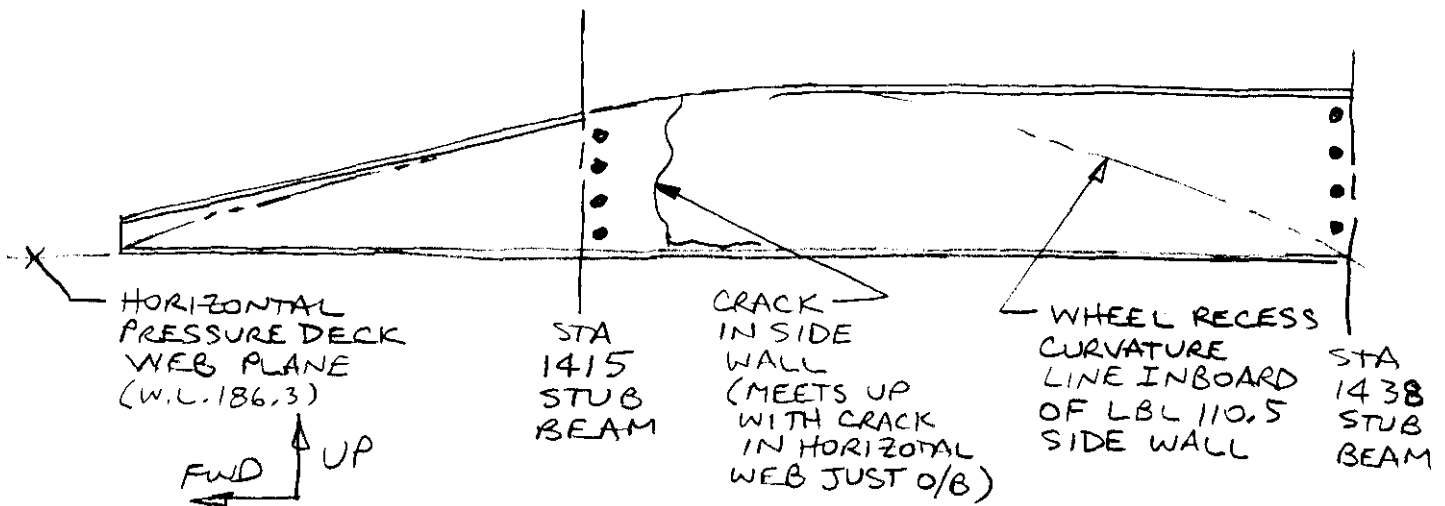
65813364 - 2
65813364 - 72

00

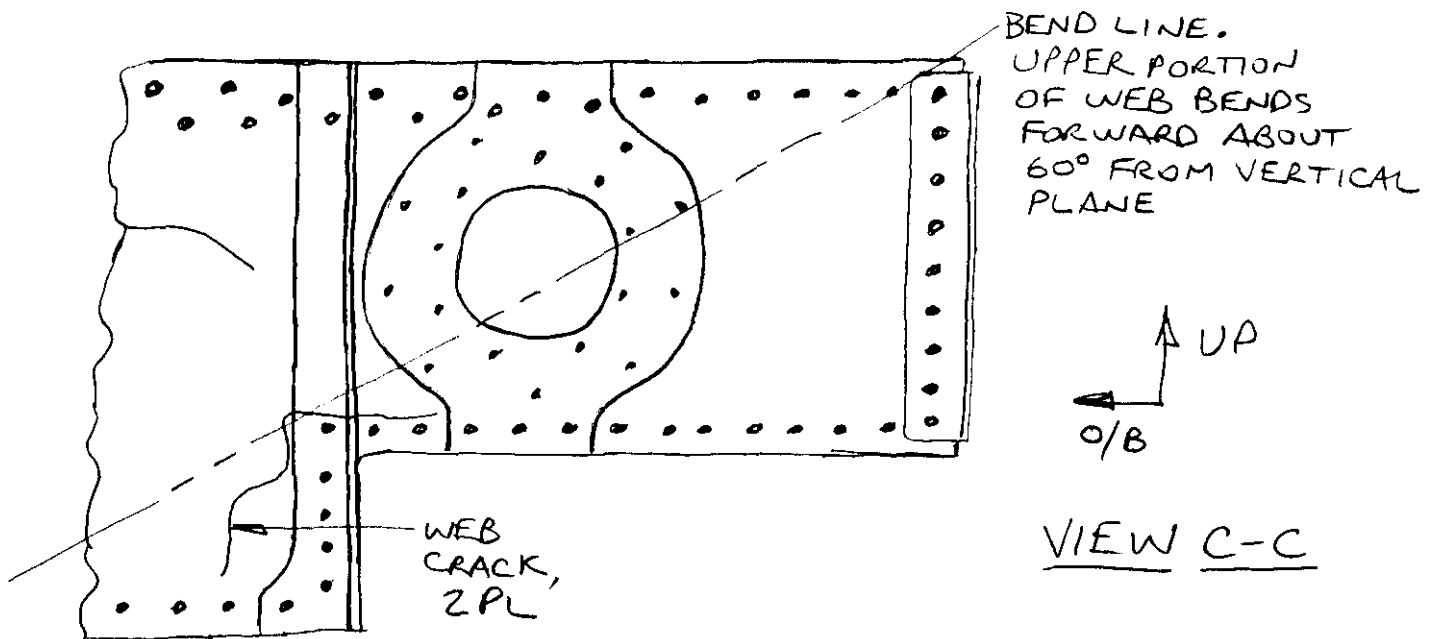


LOG # LF111

NO APPARENT SOOTING OF SEGMENT ON ANY SURFACE.



VIEW B-B (ROTATED 90° COUNTERCLOCKWISE)



VIEW C-C

- ④ L.B. L 98.58 VERTICAL WEB REMAINS ATTACHED FROM ABOUT STA 1399 TO STA 1432. HOWEVER WEB IS TORN VERTICALLY AT ABOUT STA 1418 AND THE AFT PORTION IS BENT INBOARD ABOUT 45° FROM VERTICAL.
- ① FWD & OUTBOARD PORTION OF WEB BENDS DOWNWARD ABOUT 45° FROM PLANE OF WEB AFT & INBOARD OF BEND.
- ② FWD PORTION OF WEB CURVES UPWARD ABOUT 45° FROM HORIZONTAL PLANE.
- ③ OUTBOARD PORTION OF WEB IS BENT UPWARD ABOUT 60° FROM HORIZONTAL PLANE.

John D. Hock TWA
3-14-97

Dennis Lantieri IAM
3-14-97

John D. Hock TWA
3-14-97