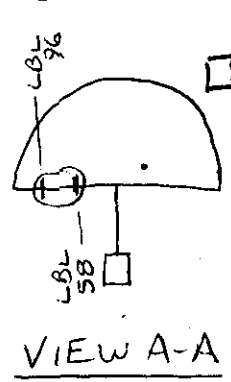
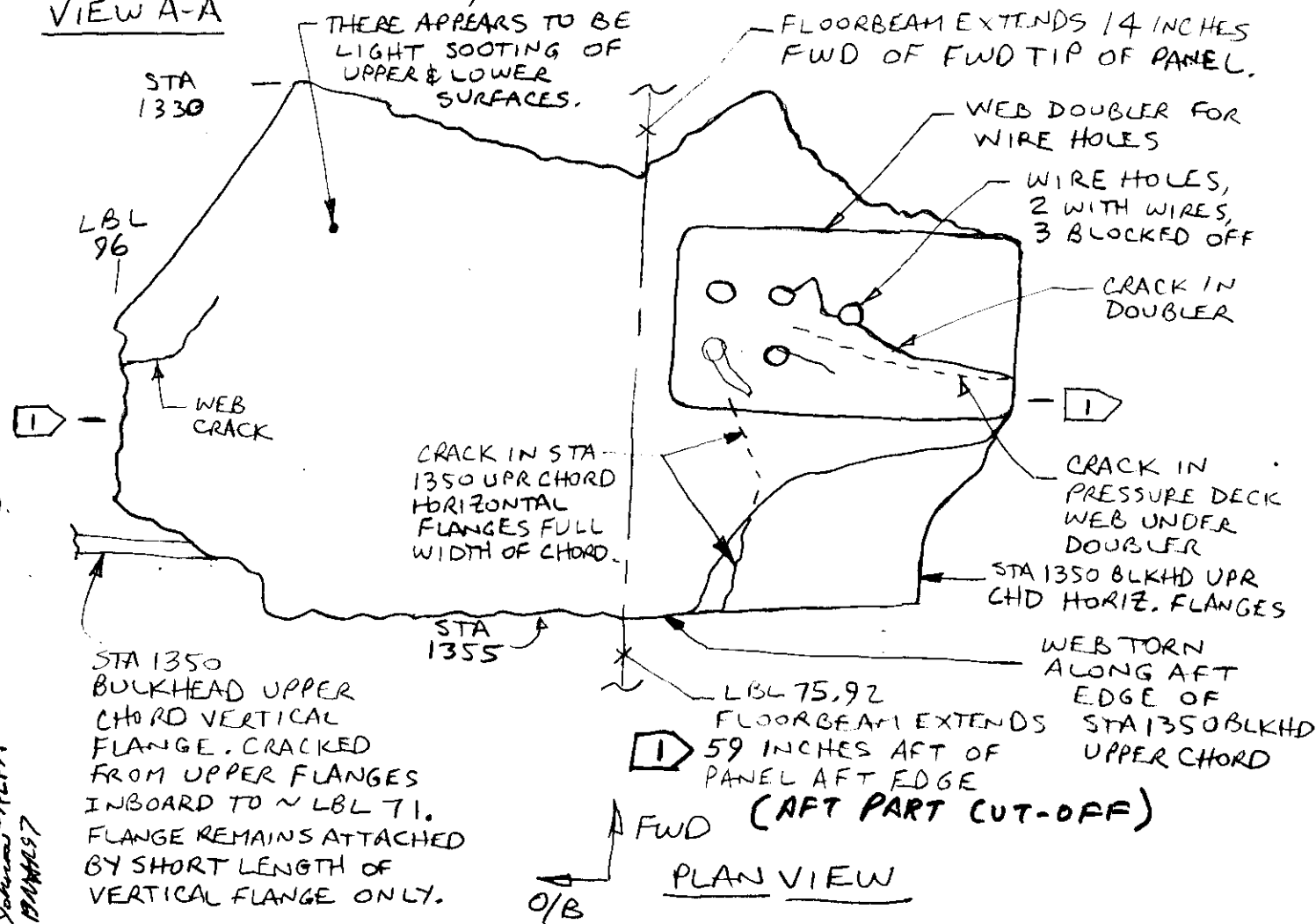


LOG # LF109
 TARGET # Z310Z
 COORD: LAT _____
 LONG _____



B. HOOKING
 BOEING
 2/22/97
 (THIS PIECE IS CUT-OFF TO MATCH IN MOCK-UP)
 DEBRIS FIELD GREEN

SEGMENT OF PRESSURE DECK
 WEB, STA 1330 TO 1355, LBL 58 TO 96;
 ATTACHED FLOOR BEAM SEGMENT, STA 1316
 TO 1414, LBL 75.92



George Dinkel TWA
 Y.D. Johnson - ALPA
 11/11/97

LBL 75.92 FLOORBEAM: EXTENDS FROM STA 1316 TO 1414. UPPER SEAT TRACK CHORD REMAINS ATTACHED, BUT IS CRACKED THROUGH AT ~ STA 1356. AFT PORTION OF FLOOR BEAM IS BENT OUTBOARD AT THIS STATION (1356) AT AN ANGLE OF ABOUT 25°. AFT LEG OF PASSENGER SEAT REMAINS ENGAGED IN SEAT TRACK AT STA ~ 1381. THE OUTBOARD SIDE APPEARS TO BE LIGHTLY SOOTED ALONG ITS LENGTH. NO APPARENT SOOTING OF THE INBOARD SIDE.

THE REFERENCED PASSENGER SEAT LEG & PARTIAL FRAMEWORK APPEAR TO HAVE SOME MODERATE SOOTING.

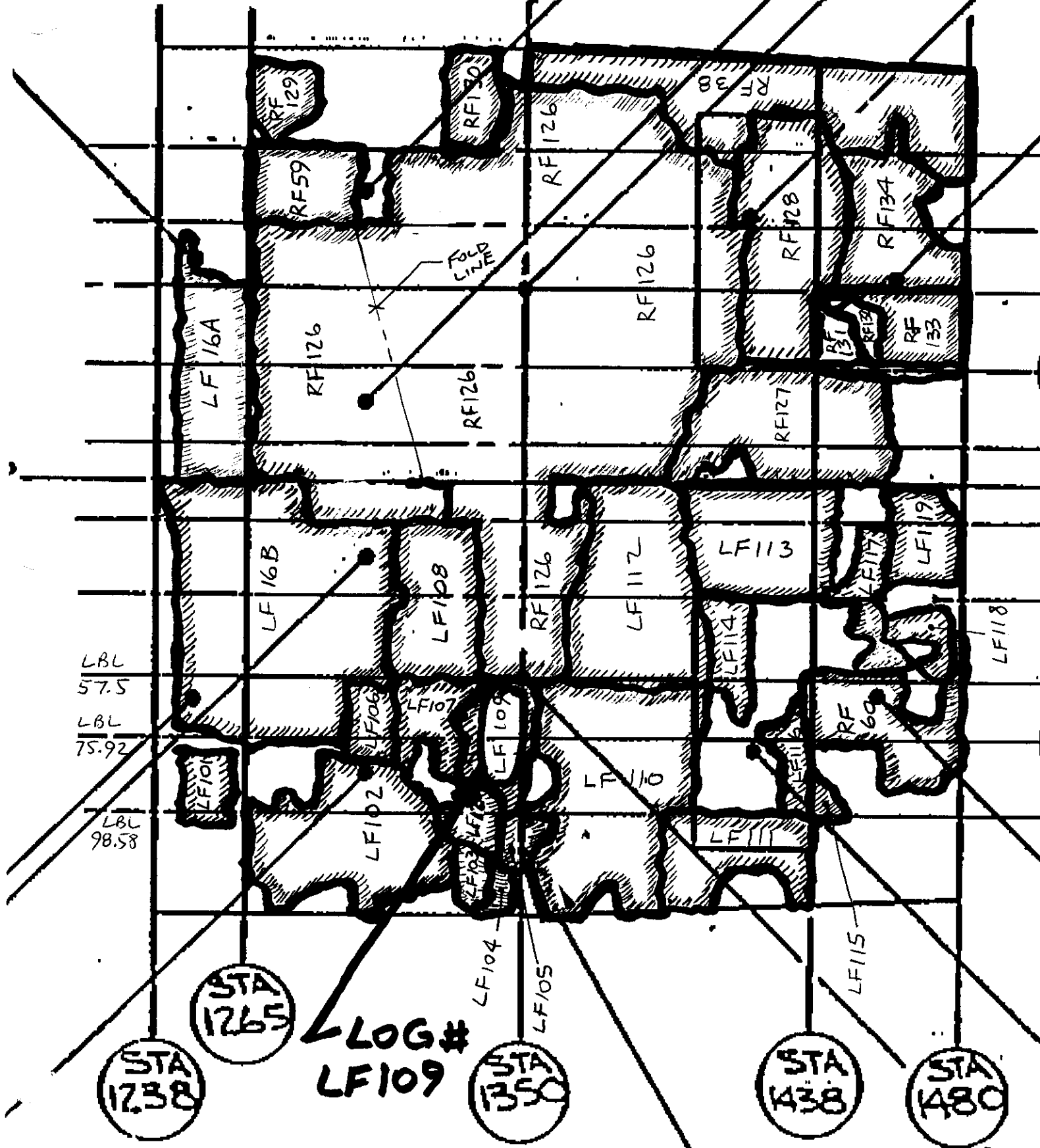
1 INDICATES FORWARD EDGE OF STA 1350 BLKHD UPPER CHORD HORIZONTAL FLANGES. 1/2

Dennis Harting IAH
 3-14-97

STEPHEN F. KUPERTON
 FMT-050647

65813364 - 2
65813364 - 72

00



Stephen F. Klupka H 30
1777-03-06 97

2/2