

- AF: F/P STA 960 TO 980 RBL 117 4F FLOATING
 TO RBL 99. AFT 20" OF # 106 4G FLOATING
 WITH RBL 98.58 S/T ATTACH 4H FLOATING
 AND 14' OF FIB UPPER CHORD
 (SEE F/B DWG)

F/P FRACTURE @ STA 960
 LOOKS LIKE STRAIGHT FRACTURE ON LOWER FACE PLIES
 AND DELAMINATION / SHREDDING ON UPPER. $\approx 10"$
 OF FIBERGLASS FWD OF FRACTURE

SMOKE & FIRE DAMAGE

- 4G F/P STA 960 TO 980 LBL 76 TO LBL 99.

AFT 20" OF F/P # 108 WITH STA 960 FIB
 UPPER CHORD (SEE F/B DWG), LBL 75.92 S/T AND
 INBD PIECE OF LBL 98.58 S/T. F/P FRACTURE
 AT STA 960 HAS $\approx 3"$ DIFFERENCE BETWEEN
 UPPER & LOWER FACE PLY SEPERATION

- 4H F/P STA 965-980 # 110 AFT OUTBD
 PIECE. LBL 50 TO LBL 75. CONTAINS A
 24" PIECE OF STA 980 UPPER CHORD.
 CHORD IS BOWED UP $\approx 1/2"$ IN MIDDLE (SEE F/B
 DWG) F/P IS DAMAGED SIMILAR TO FRM 4B.

Barry Sims

10/23/96

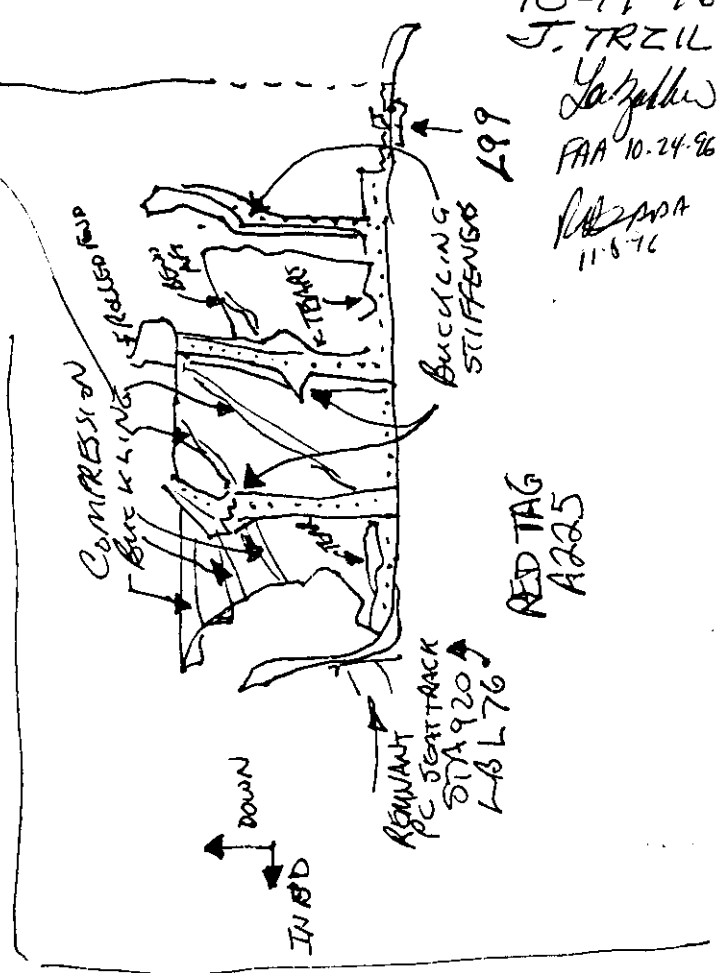
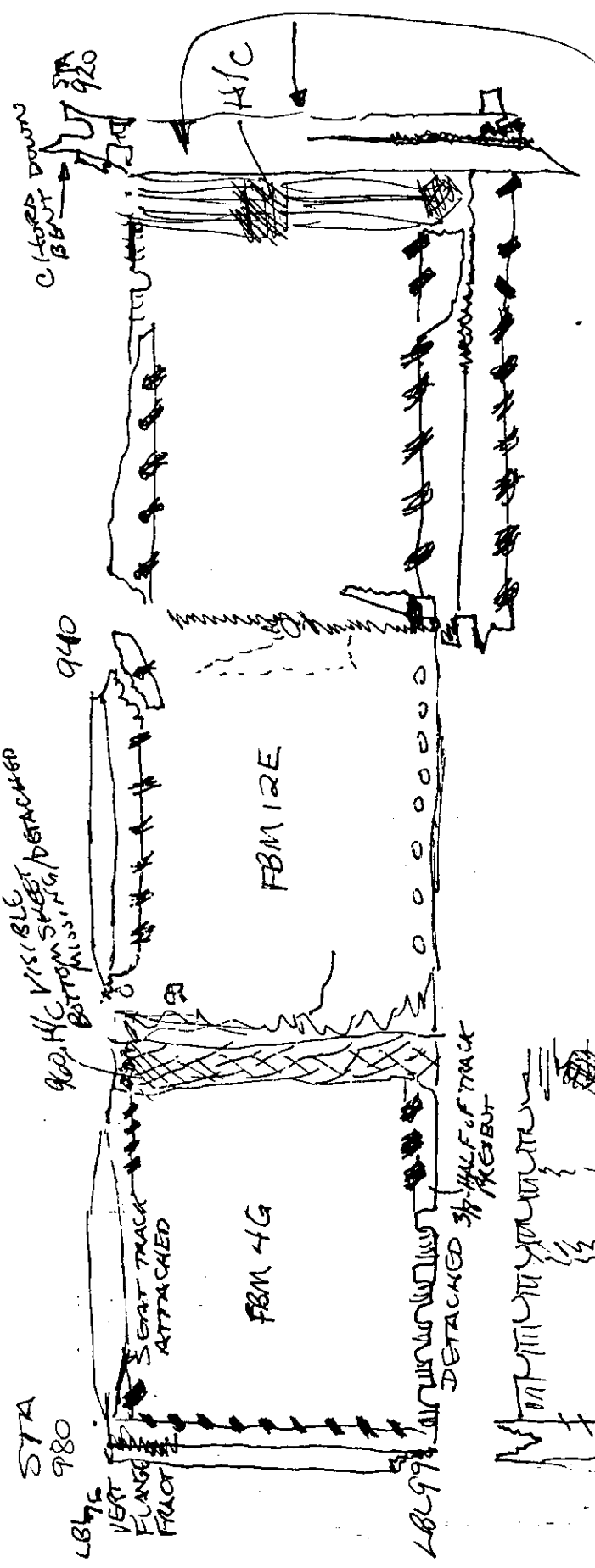
Luizabdo FATA

10-24-96

[Signature] APP
 11-8-96

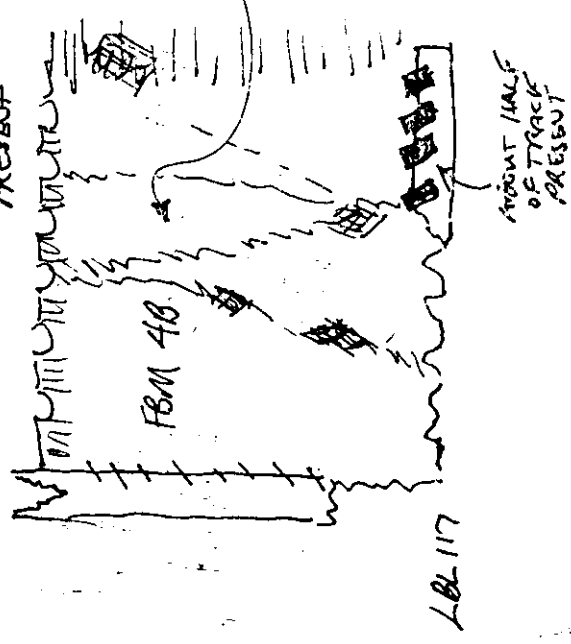
Demolition
 I AM 10-23-96
 10-19-96
 J. TRZIL
 J. J. J. J.
 FAA 10-24-96
 11-8-76

FLOOR PANELS — LOOKING UP



RED TAG
 A225

H/C DETACHED FROM UPPER SHEET; LOWER SHEET STILL ATTACHED



FBM-5A

Dennis Santiago
10.23.96

10-19-96

JTREIL
JTR added FAA
10.24.96

FRAME FBM-5A STA 960 LBL 125

RED TAG A144
LLS 138
EOD 3 ; TIME 11Z

SPLATTER AFT SIDE INBOARD DIRECTION
UPPER HALF OF SEGMENT AND ON
OBD FLANGE SURFACES

UPPER TWO SHEAR TIE TO SKIN
ATTACH FLANGES BROKEN OFF. ⊕

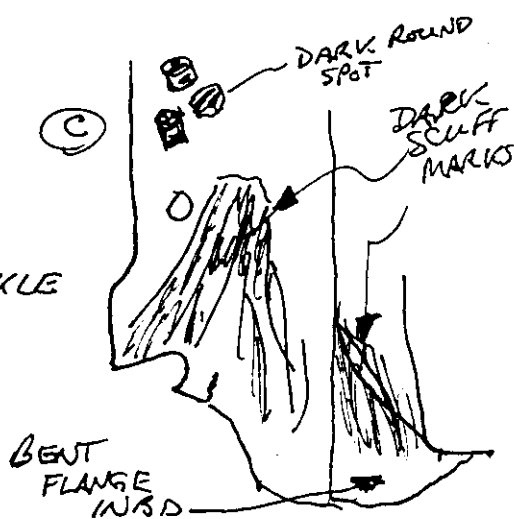
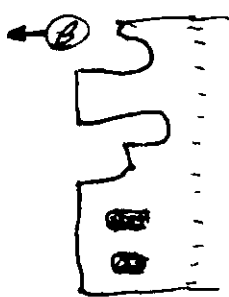
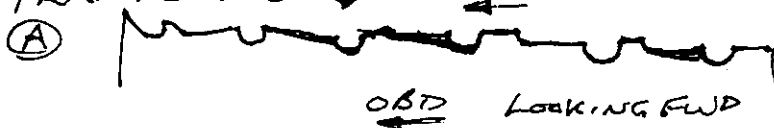
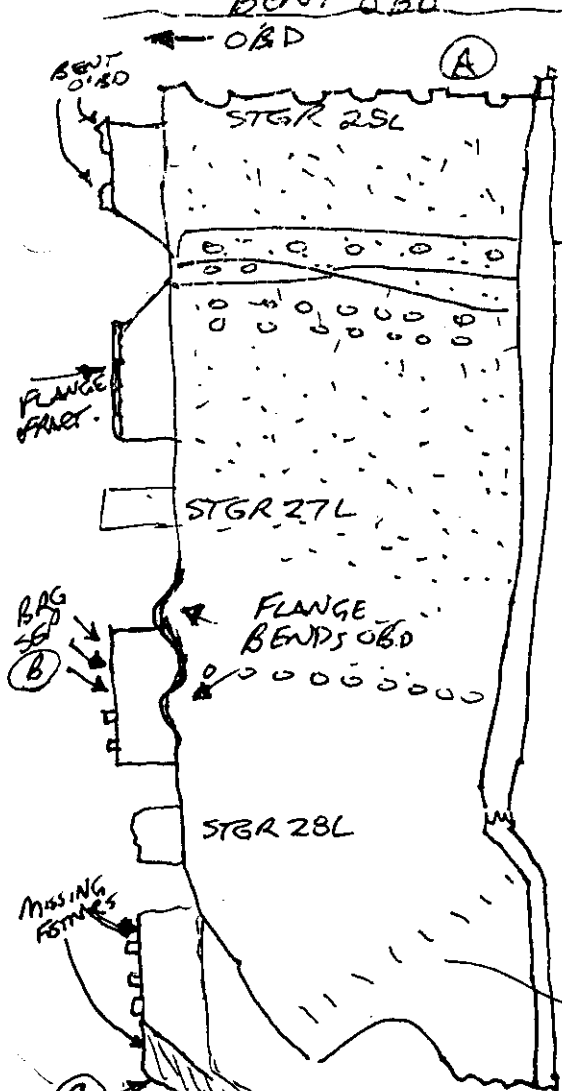
LOWER SIX FASTENERS IN LOWER TWO
SHEAR TIES INDICATE SKIN-SHEAR
TIE SEPARATION IN TENSILE [INBD-OUTBD]
MODE. UPPER THREE FASTER HOLES
IN 2ND FROM BOTTOM SHEAR TIE APPEAR
TO HAVE SEPARATED BY BEARING (PULL OUT)

VERTICAL OUTER FLANGE SHOWS EVIDENCE
OF POSSIBLE COMPRESSION BUCKLING
AT LATTER SHEAR TIE - COULD BE JUST
BENT OBD AT THESE TWO LOCATIONS

STGR CLIPS ⊕ STGRS 27L & 28L
INDICATE BEARING SEPARATION ⊕ FASTENERS

SLANT FRACTURE INDICATES INBOARD
TO OUTBOARD DUCTILE SEPARATION
THROUGH FASTENER HOLES AT STGR 25L
FRAME WEB ⊕

⊕ UPPER MOST SHEAR
TIE BETWEEN
FLOOR BEAM &
STRINGER 25L -
FLANGE REMNANTS
BENT OBD



[Handwritten signature]