

SPANWISE BEAM #1 - WING CENTER TANK

CW-906
Z-3272
GREEN

This section extends from BL0 to RBL 53.00. It consists of 5 stiffeners and one access door.

The stiffener at BL0 extends from 15" above from the lower chord to 42" above the lower chord. The fasteners common to the BL0 rib are missing and the flange remains in tact. The stiffener at RBL 9 is intact except the shear ties at the upper and lower chord are broken off. The upper 14" of the stiffener at RBL 17 has a fracture at the web of the stiffener but the upper shear tie remained attached. Fasteners through the upper shear tie common to the upper skin remained attached and exhibit tensile failure. The lower shear tie at RBL 17 is broken off at the lower end of the stiffener. The RBL 17 stiffener and most of the web above the access door is missing. The stiffener below the door remains attached except the lower shear tie is missing. Only 40" of stiffener at RBL 34.00 remains and both the upper and lower shear ties are missing. The stiffener at RBL 42.00 extends from the lower chord to 52" above the lower chord and the lower shear tie remains attached with no fasteners. The stiffener at RBL 49.6 is missing both upper and lower shear ties and the stiffener free flange.

The fwd side of the access door remains intact and the aft face sheet is missing with very little damage to the honeycomb core.

There is evidence of fire damage on the forward side of this section. See the Fire and Explosion Group notes for documentation.

W. H. H. 12-6-96 NIA

H. S. Smith JAM 12-6-96

Stephen F. Klapach

FAM 12-6-96

SD GREEN 12-7-96 ALPA

Q. Reimer 12/12/96 BOEING

WING BOX

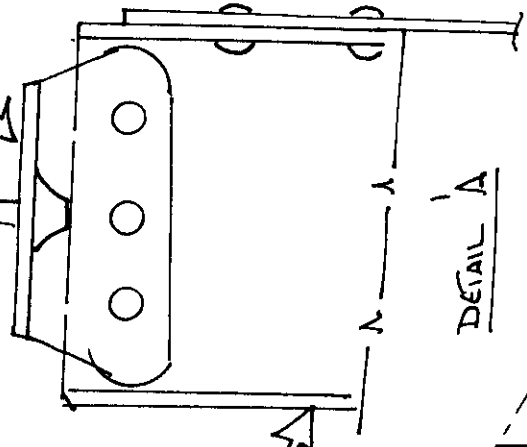
SPAN WISE BEAM #1

CW-906

Z-3272

CLIP UPPER
G9802347-1

FWD



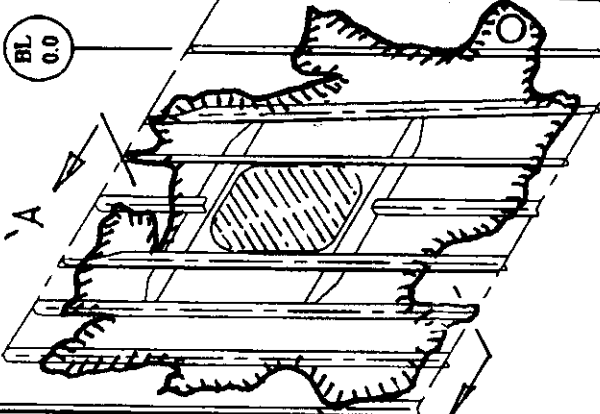
DETAIL A

STIFFENER
(G5810766)

BL
0.0

A

FWD

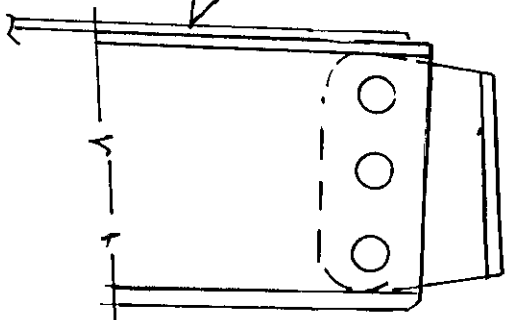


FRACTURE
OUTLINE

B

WEB

G5810766



DETAIL B

NOTE
AFT FACE SHEET OF DOOR
MISSING. OTHERWISE CORE IN PLACE