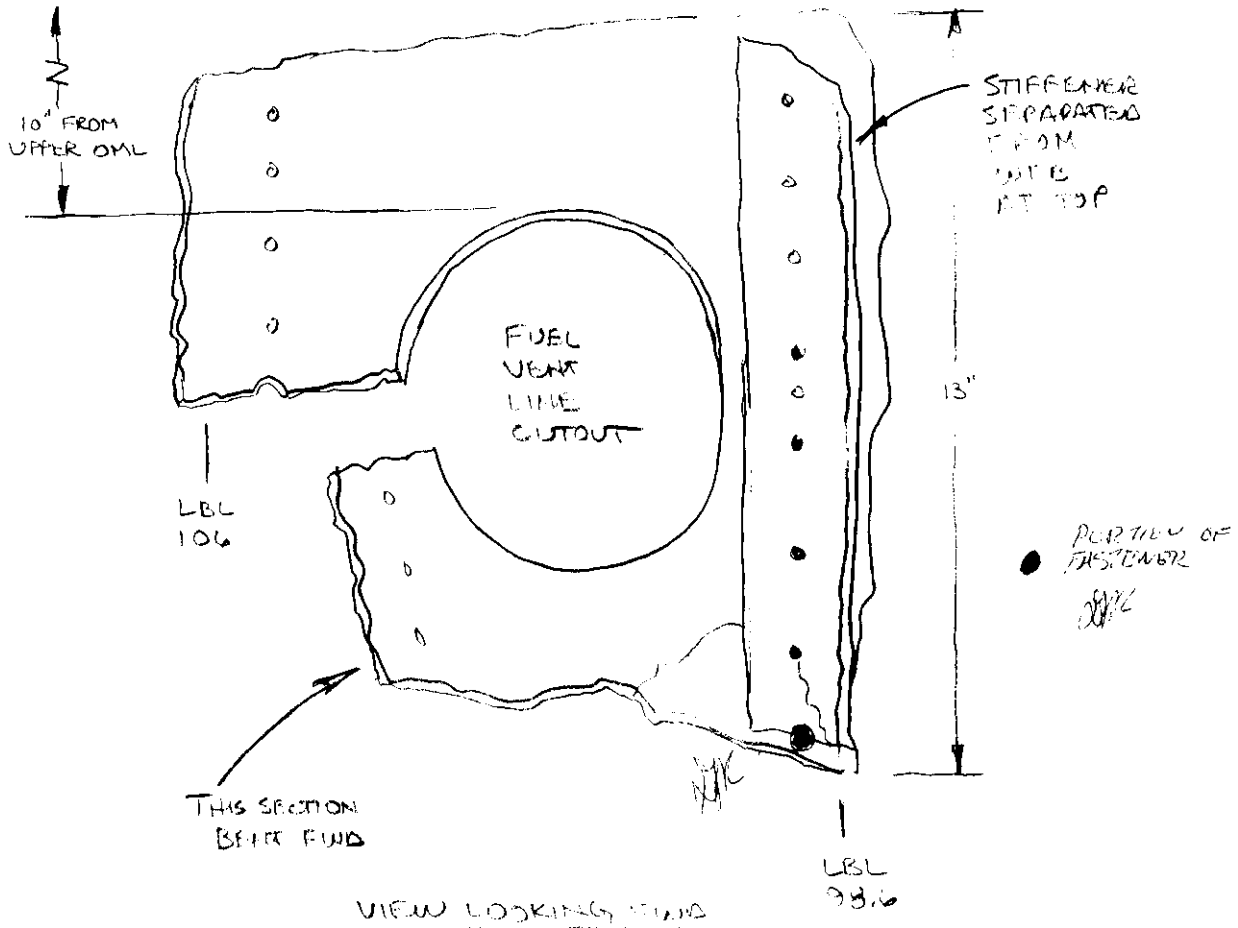


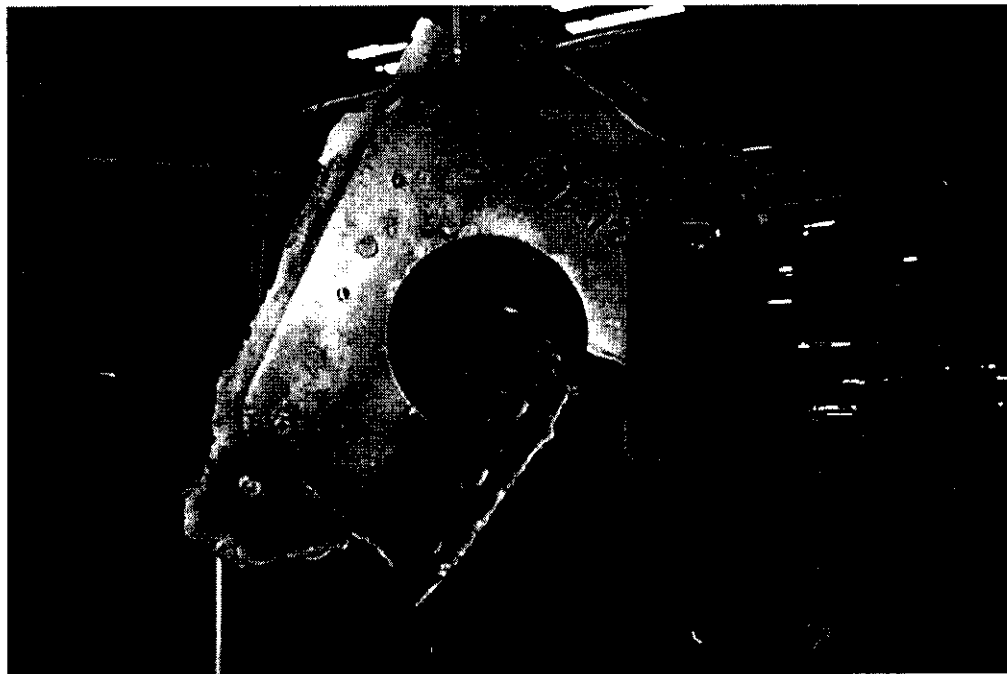
CW-71Z
 Z-2815
 SPANWISE BEAM # Z



SMALL PIECE OF WEB THAT IS GENERALLY FLAT,
 ONLY THE ^{WEB} RANGE OF THE STIFFENER AT
 LBL 98.6 STILL REMAINS. THE FASTENERS REMAINING
 IN THE HOLES AT LBL 106 EXHIBIT SHEAR FAILURES.
 THE LWR SECTION OF SKIN IS BEAT FWD 70° ON
 A 3" RADIUS. NO JOST ON EITHER SIDE.

~~SOME LIGHT~~
~~REVISIONS~~
~~BY~~

Warren Stewart Boeing
 SD GREEN 11/21/96 ALPA
 Jean Zuber 11/4/96 FAA
 Coy 766 11-2-96 FAA



CW-712 (FWD - AFT)



CW-712 (AFT → FWD)