

WING CENTER SECTION - SPANWISE BEAM # 2

CW-702
C-224
GREEN

This section of the SWB2 is from RBL 91.10 to RBL 25.20 and extends from the upper chord to lower chord.

It is still attached to the upper skin panel from RBL 30 to RBL 57 and there is a fracture of the web just under the upper chord from RBL 49 to the outbd end. The lower edge of the web has separated from the lower chord and the remaining fasteners in the web exhibit shear failures. There are eight stiffeners still attached to the web which includes the entire length of stiffener at RBL 83.2, 75.9, 66.6, 57.5, 49.6, and 41.7. An upper portion of the stiffeners at RBL 91.1 and 34 remain. The stiffeners at RBL 83.2 thru 66.6 are fractured thru the entire stringer and web at approx 20" above the lower chord. This is the region of the greatest amount of compression damage (folded curtain effect) to the section. The stiffener free flange at RBL 83.2 remains straight above and below the fracture location (20" above lower chord) and the web periphery has some inbd/outbd curvature. The remainder of the stiffeners have been distorted and are deformed to match the shape of the web and are folded into the web folds. The bend radii of the web folds varies from a tight crimp to 1" radii. The outbd edge of the web has many tight curls directly at the web fracture line which are generally directed aft and there are multiple instances of small portions of the web that have multiple alternating tight radii folds. The upper shear ties remain partially attached at RBL 57.5, 49.6, 41.7, and 34. None of the shear ties common to the lower chord remain attached.

There are a number of small tears in the web at various locations. Some exhibit edges curled forward, others curled aft. In several cases, the tear edges have folded across one another, in the lateral axis, consistent with the general folding of the web.

There are spike tooth fractures evident in this section and are documented in the metallurgical report.

The entire part is sooted, with the exception of the lower edge of the web, which is free of soot to the extent that it is shadowed by the lower chord vertical flange. See the fire and explosion group notes for complete documentation on soot and fire damage.

SD GREEN ALPA

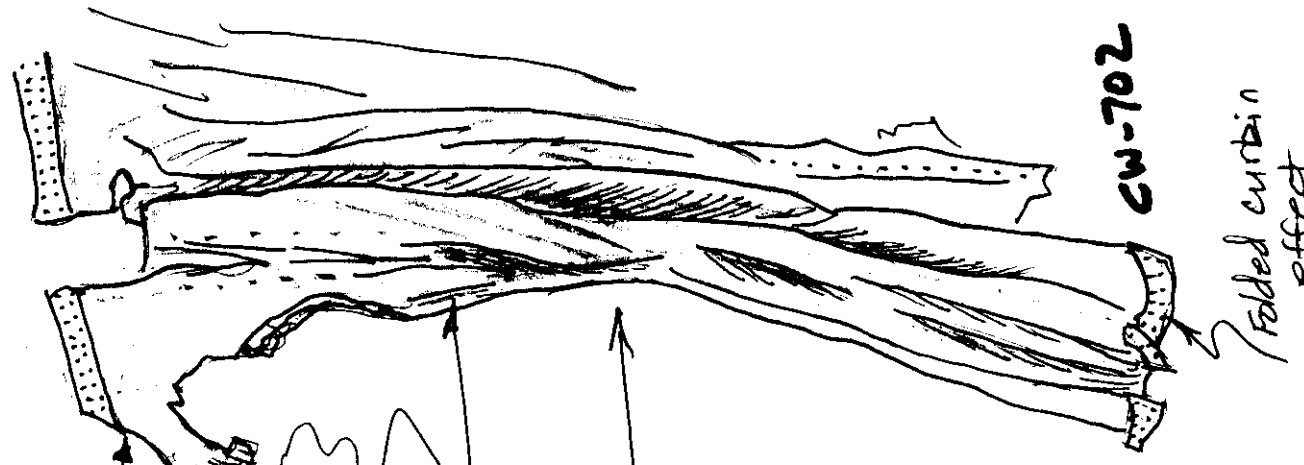
12-06-96

K. Brackley TAM 12-6-96

Stephen F. Klappack
12-09-96 F17A

AA Reimer BEING 12/12/96

Sparwise Beam
No. 2



CW-702

Folded curtain effect

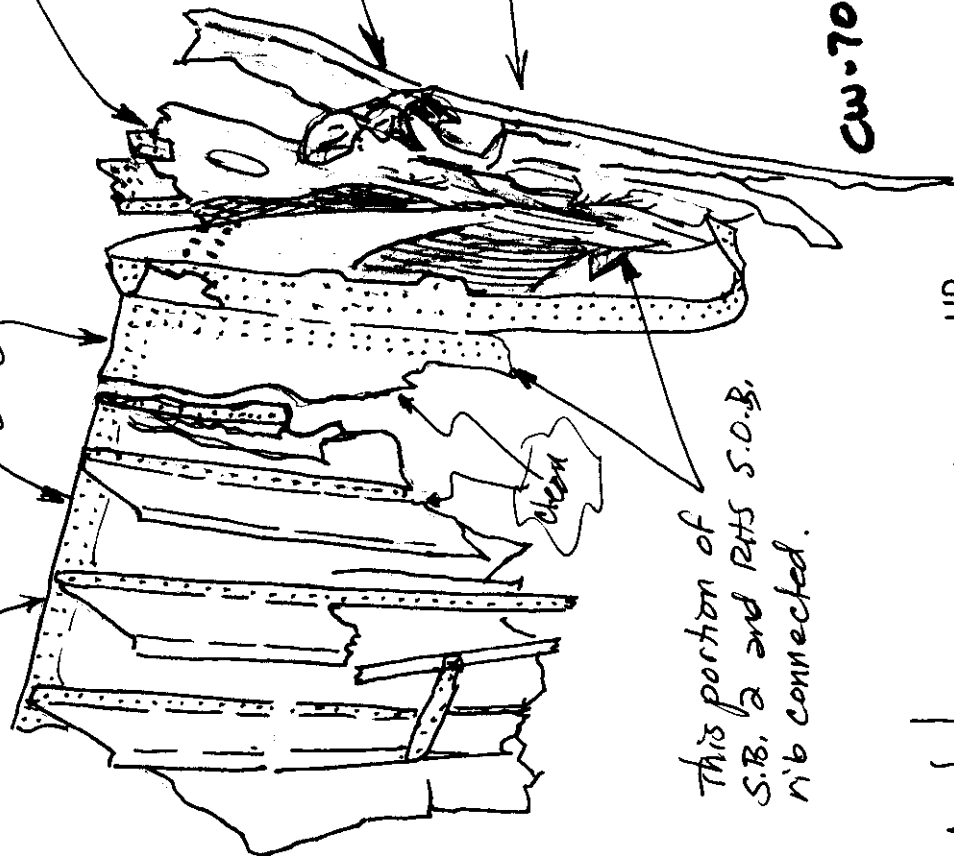
Scoted

≈ 60"

CW-701

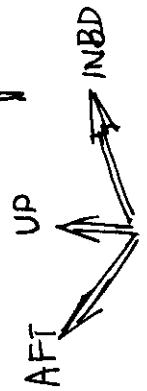
RTS
S.O.B. Rib
NOT CONNECTED

NOT CONNECTED
RTS CW-701



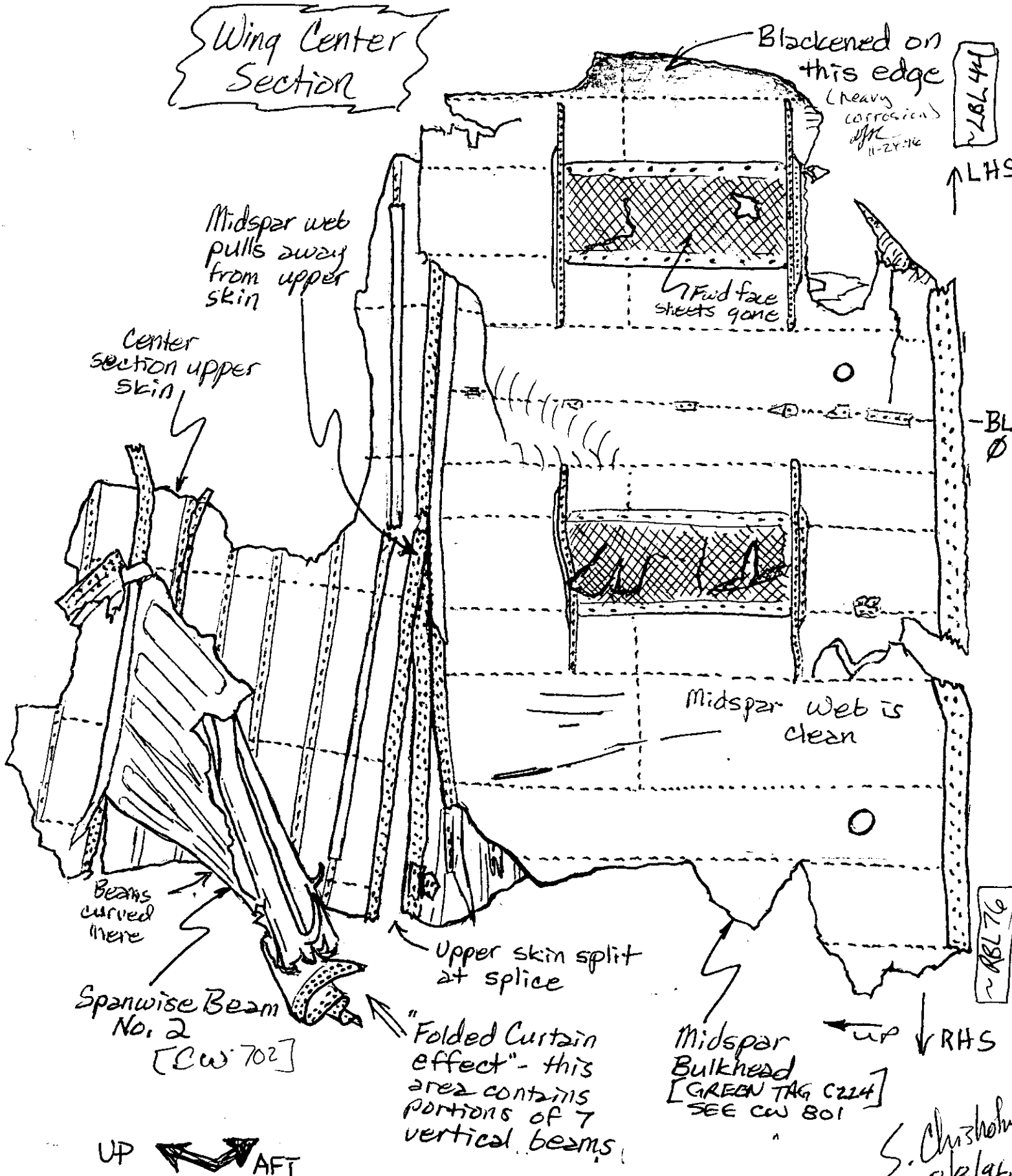
This portion of
S.B. 2 and RTS S.O.B.
rib connected.

clean



8/27/96

Wing Center Section



VIEW LOOKING AFT
(section resting on RHS edge)

S. Christopher
8/8/96