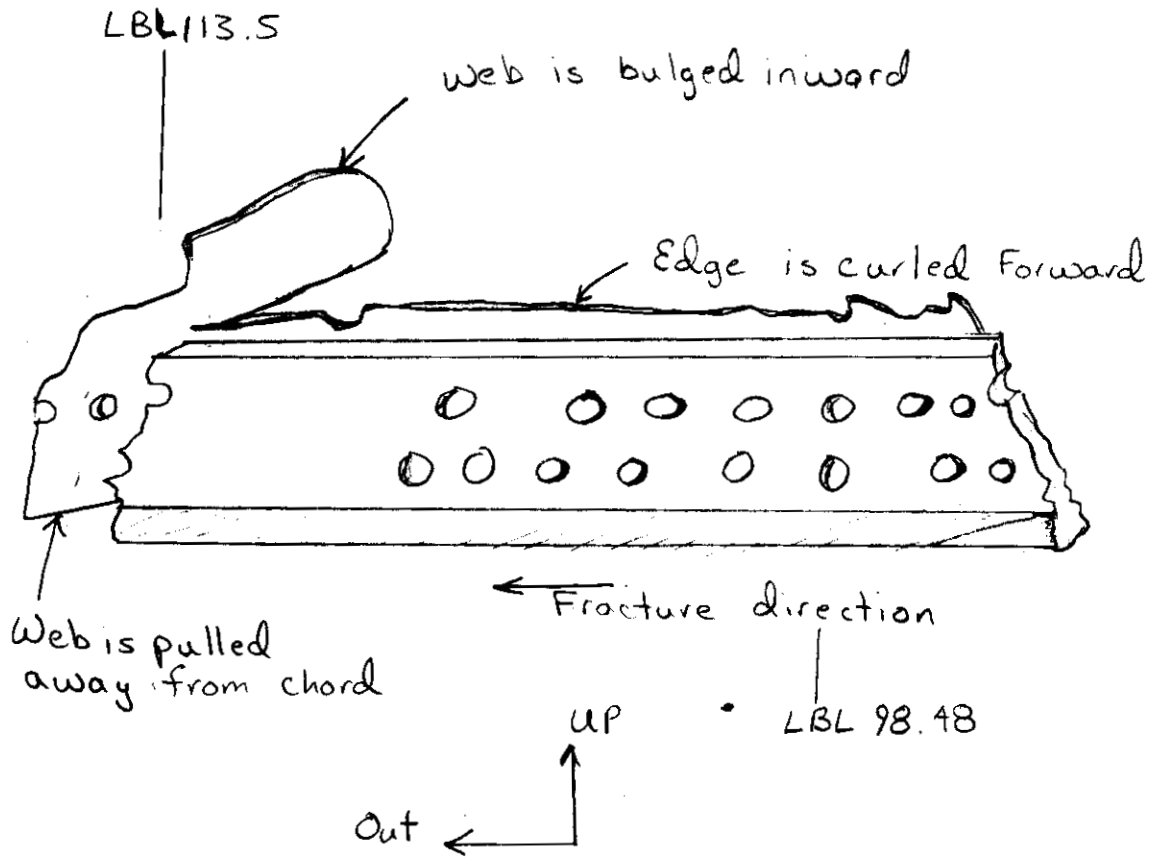


CW 524  
Lot # 9-21-9-1  
Dredged Green debris field  
Tag # 2832

Front spar lower chord  
LBL 100



View looking Forward

- Either dirty or lightly sooted
- No Evidence of slow growth fracture

Yehia John - ALPA  
3-20-97

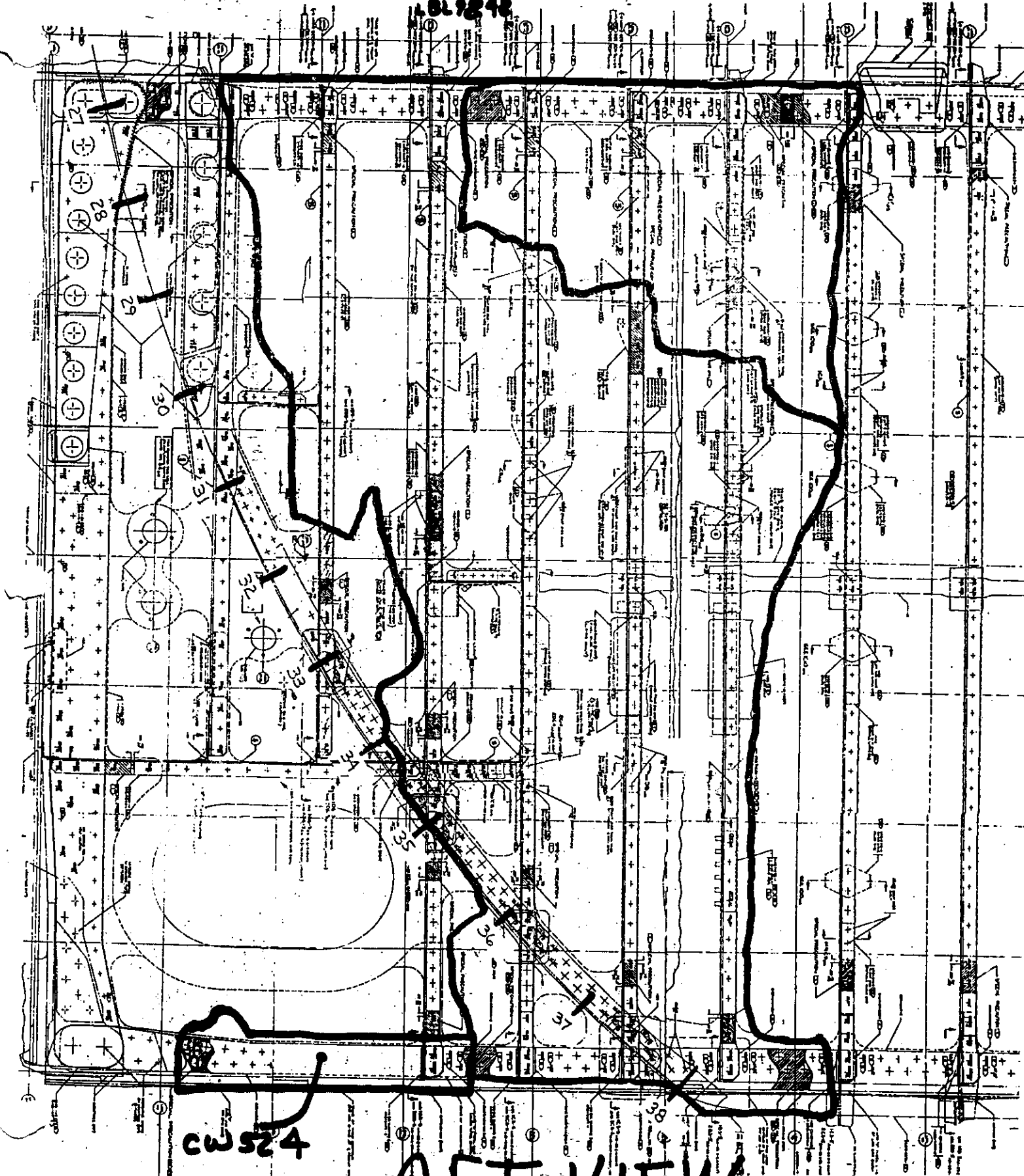
Dennis Santiago FAA  
2-28-97

Stephen F. Klapach Jr  
FAA 01-10-97  
8-04-02-97

Boeing  
3/23/97  
Jim Powers  
11-23-96  
Boeing

CW 524

BL 9248



CW 524

AFT VIEW

Stephen F. Klapach JR  
FAA 01-10-97 804-02-92

Page 2 of 2