

SIDE OF BODY RIB - RIGHT WING - WING CENTER TANK

CW-313	CW-314	CW-317
Z-2732	Z-2730	Z-2795
GREEN	GREEN	GREEN

These ~~two~~<sup>three</sup> segments are small portions of web that do not have any stiffeners attached. CW-313 measures 13" x 17" and CW-314 measures 11" x 19".

These three parts are bowed. CW-314 is bowed inbd at the center. CW-313 and CW-317 are both heavily bowed outbd at the center. See the accompanying sketch for details on part deformation. CW-314 has rivets remaining in the fastener holes that exhibit shear failures. CW-313 only has a few fasteners remaining in the holes that exhibit combination of tension and shear. CW-317 has rivets that exhibit tension failures and some that exhibit shear failures.

The three portions of web are sooted on the inbd side and clean on the outbd side. See the fire and explosion group notes for complete documentation.

W. Stuyant 11/2/96 BOEING

B. H. H. 11-26-96 TWA

J. H. H. 11-2-96 FAA

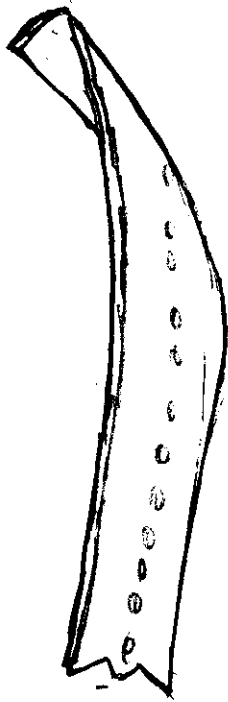
R. Beach 12-7-96 IAW

SD GREEN 12-17-96 HLLA

RH SIDE-OF-BODY RIB PIECE CW-313

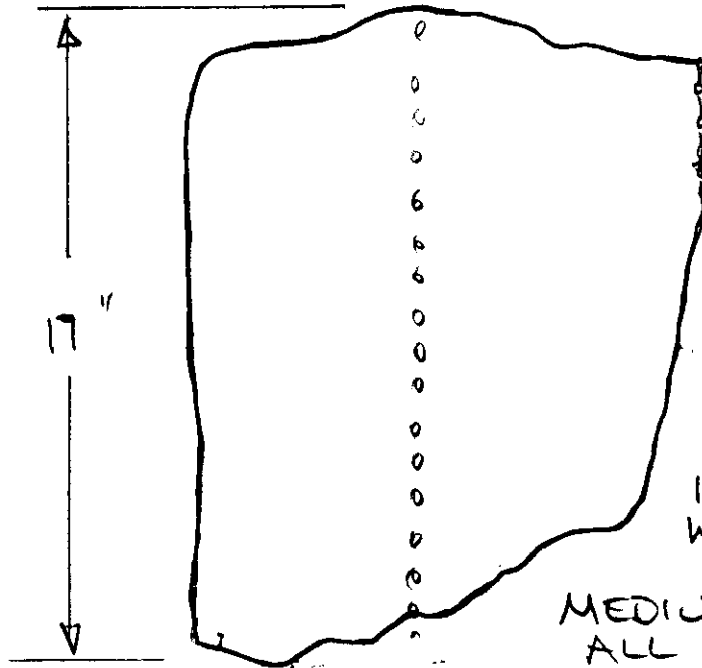
Z-2732 GREEN

A. REIMER  
10/14/96



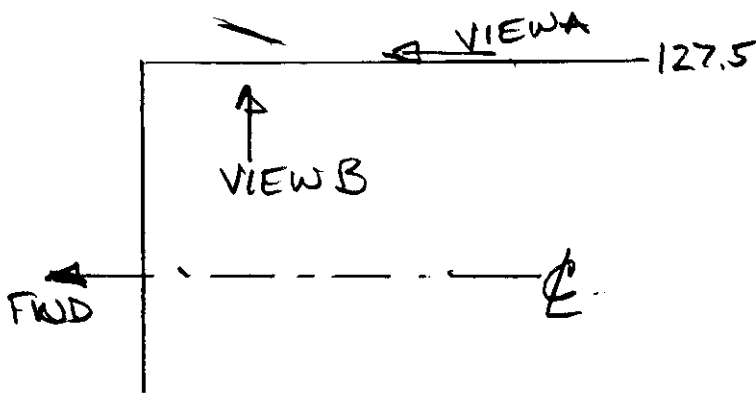
VIEW A

VIEW LOOKING FWD  
ALONG RBL 127.5



VIEW B

ELEVATION VIEW  
OF FLAT DEVELOPED  
PATTERN, LOOKING OUTBD

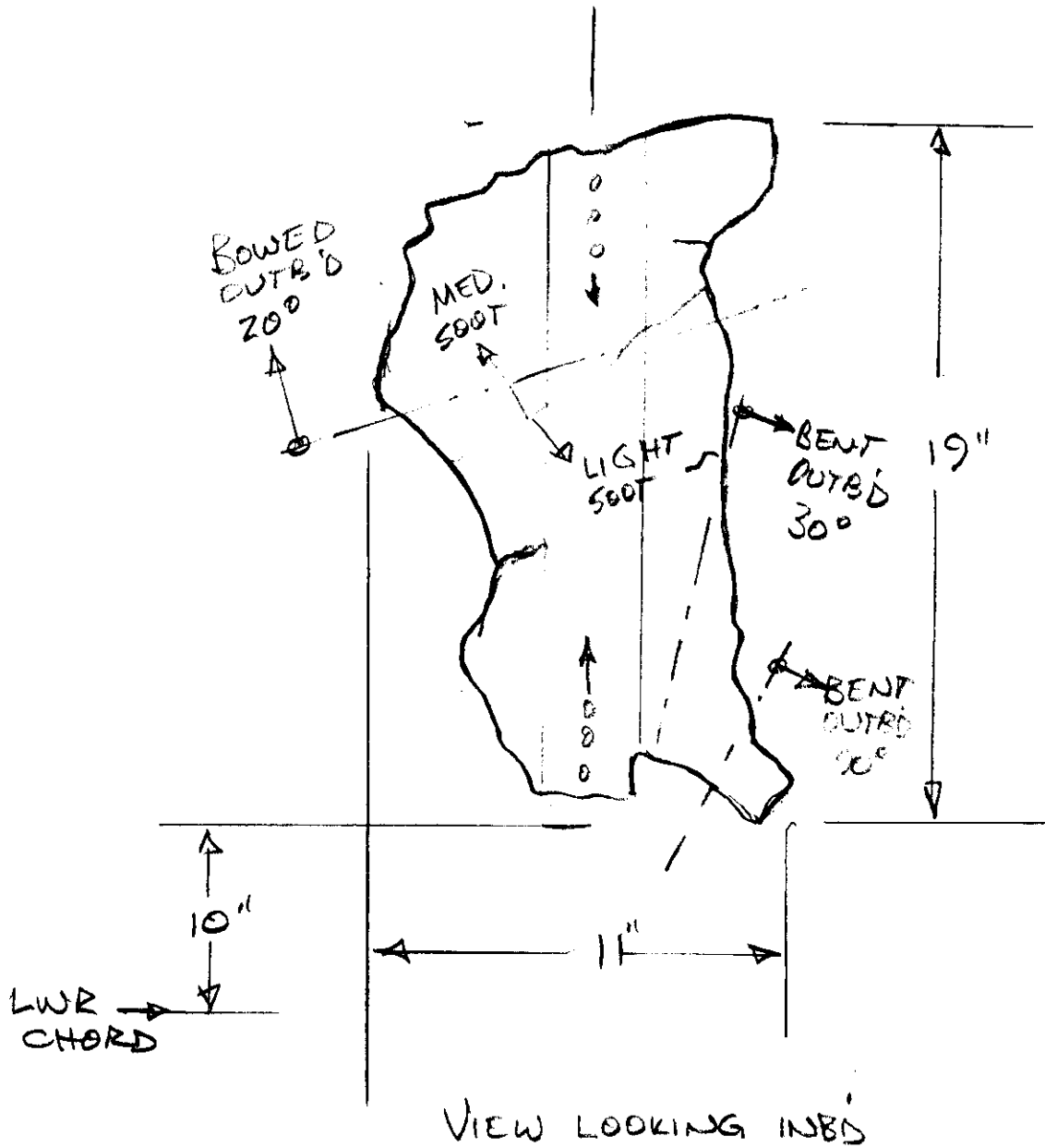


R.H. SOB RIB WEB

A. REIMER  
10/17/96

CW-314 Z-2730 GREEN

LOC'N 4<sup>TH</sup> STIFF FROM  
F.S.



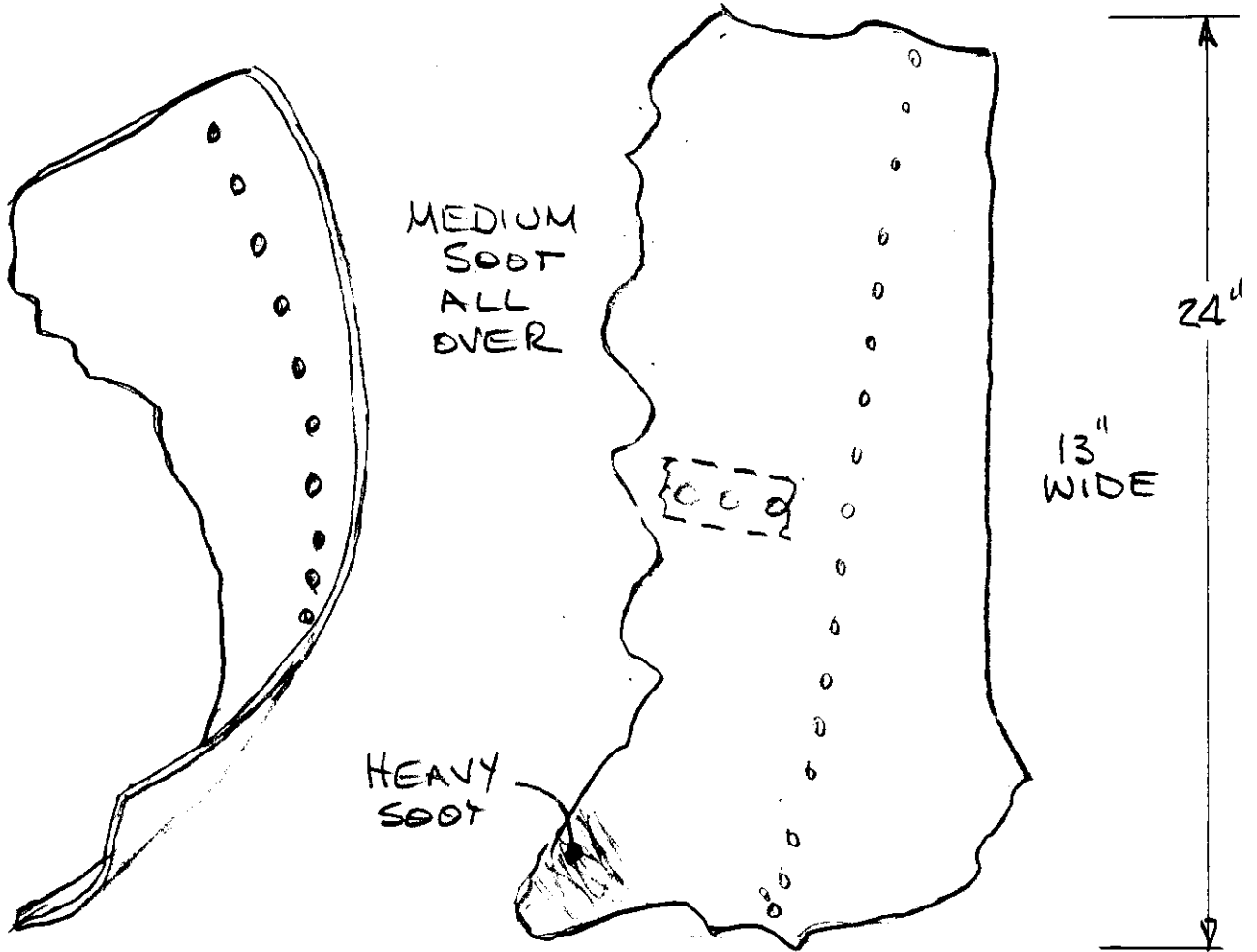
NOTE:

SOOT ON INBOARD SIDE  
OUTBOARD SIDE CLEAN

RH SIDE-OF-BODY RIB PIECE ~ CW-317

TAG # Z 2795 GREEN

A. KEIMER  
10/14/96

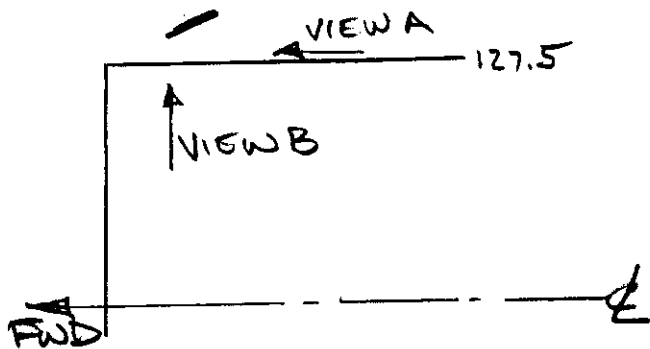


VIEW A

VIEW LOOKING FWD  
ALONG RBL 127.5

VIEW B

ELEVATION VIEW OF  
FLAT DEVELOPED  
PATTERN LOOKING OUTBO



cg table 12-16-96 IAM