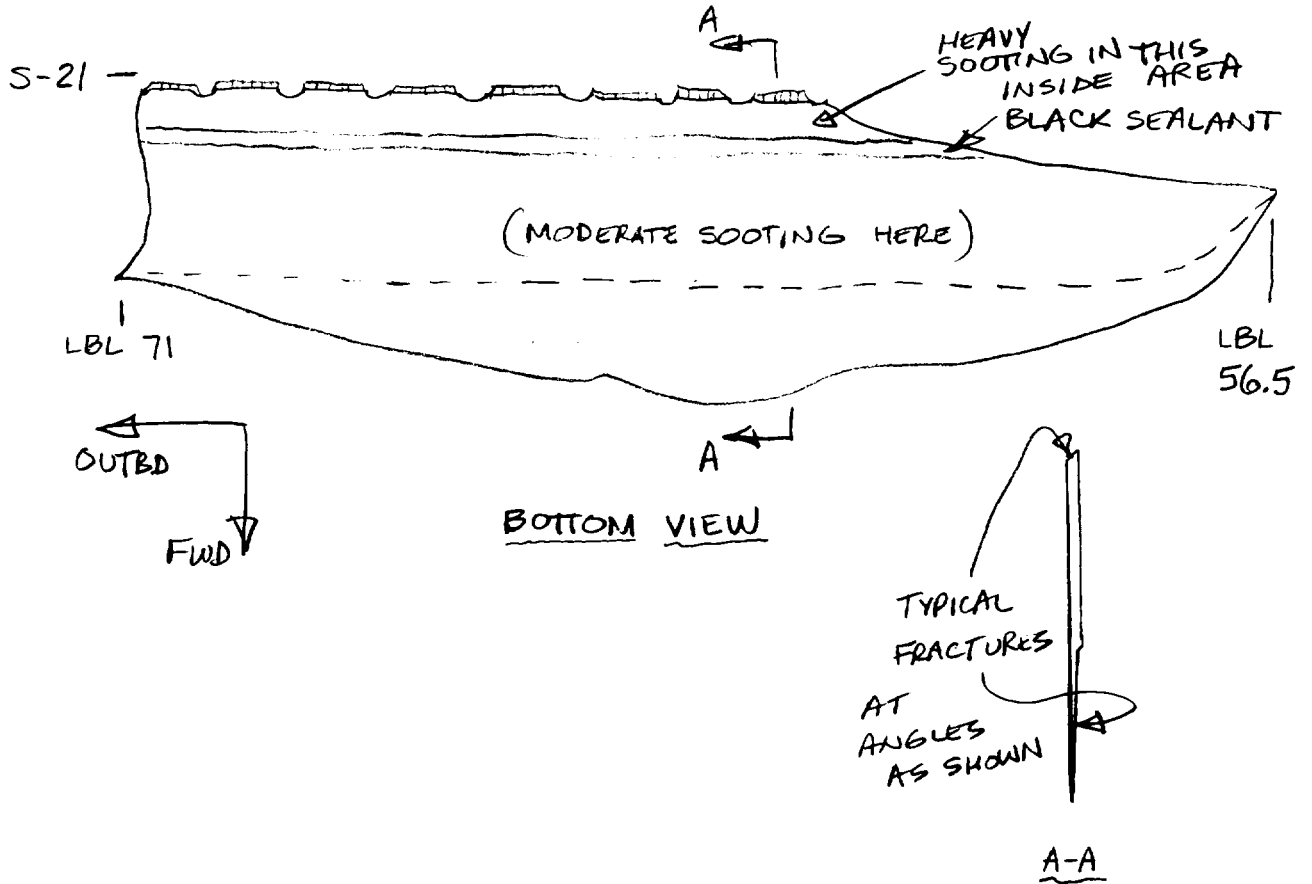


UPPER SKIN - SEGMENT

CW-181

11/3/96-33 (?) to

BOEING - D, ORTH
3/14/97



UPPER WING CENTER TANK SKIN SEGMENT 14.5 INCHES LONG BY 5 INCHES AT WIDEST POINT. BEVELED FRACTURE LINES ALONG FWD AND AFT EDGES. MODERATE SOOTING FWD OF SEALANT LINE ON INSIDE SURFACE, HEAVY SOOTING AFT.

Leigh D. Johnson - ALPA
3-20-97

Brandon Smith
TWA 3/22/97

Dennis Santiago I AM
3-26-97

Stephen F. Klappack
FAA CA-02-40