

BODY BUTTLINE 0.00 RIB - WING CENTER TANK

CW-1106
Z-2773
GREEN

This part is a segment of the body buttlane 0 rib. It extends from the SWB#1 forward about 10 inches and from the upper chord down 52".

The part is generally a flat web with one vertical stiffener and the web flange of the aft rib post attached. There are three small holes in the web just forward of the SWB#1. At the top of the part, the top 6 inches of the forward edge is folded down to the left.

There is soot on right side of the part. See the Fire and Explosion Group notes for a more detailed description.

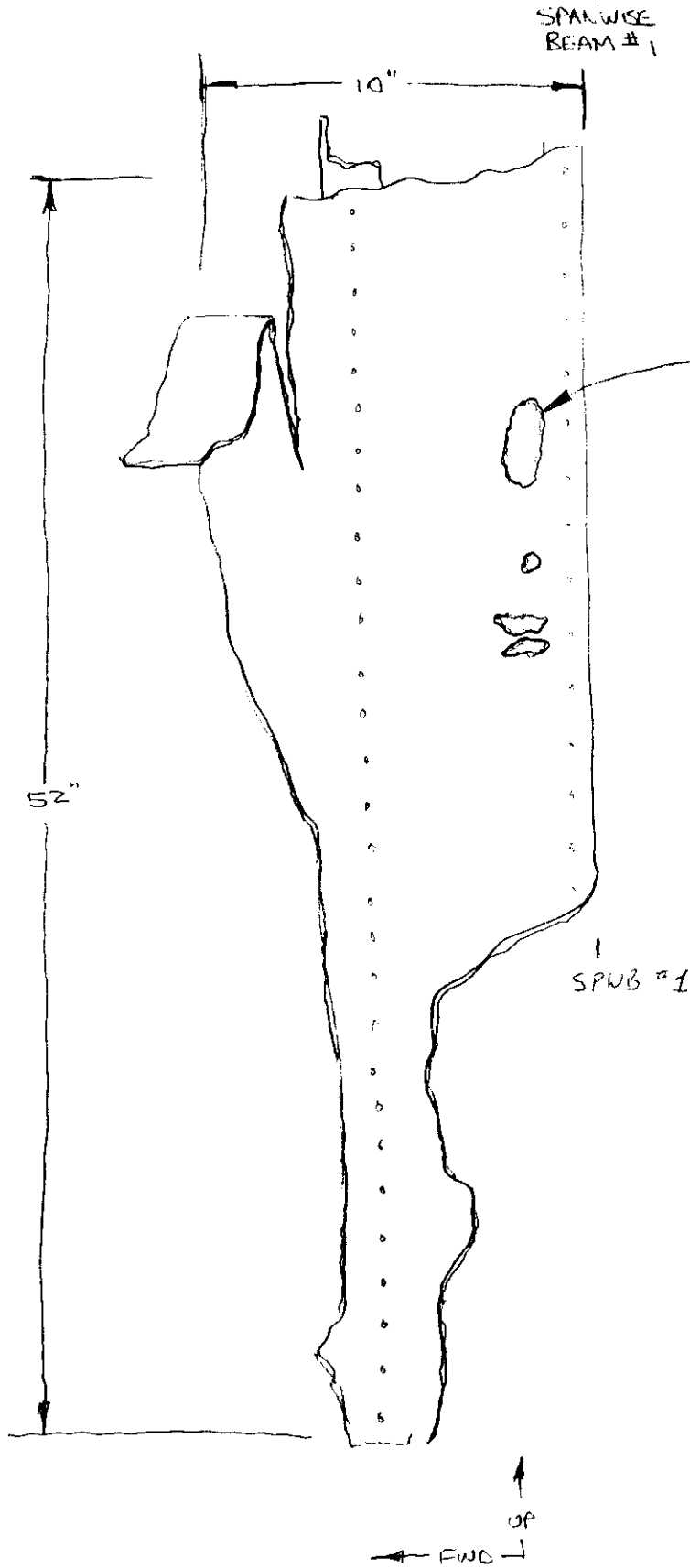
M. Phillips 12-6-96 mPA

R. Beuchette 12-6-96 IAM

SD GREEN 12-7-96 ALPA

Stephen F. Kumpach on Form 12-09-96

AA Reimer 12/12/96 BOEING



4 HOLES WITH NO
SIGNIFICANT DEFORMATION
AROUND HOLE.
SHOWS POSSIBLE INDICATION
OF BURN THRU PENETRATION?
SLIGHT OVERALL DEFORMATION
INDICATES RIGHT TO
LEFT PENETRATION DIRECTION.

CENTER WING
BL O RIB
CW-110 ~~B~~
Z-?
GREEN FIELD

W. Stuyant 07/30/76

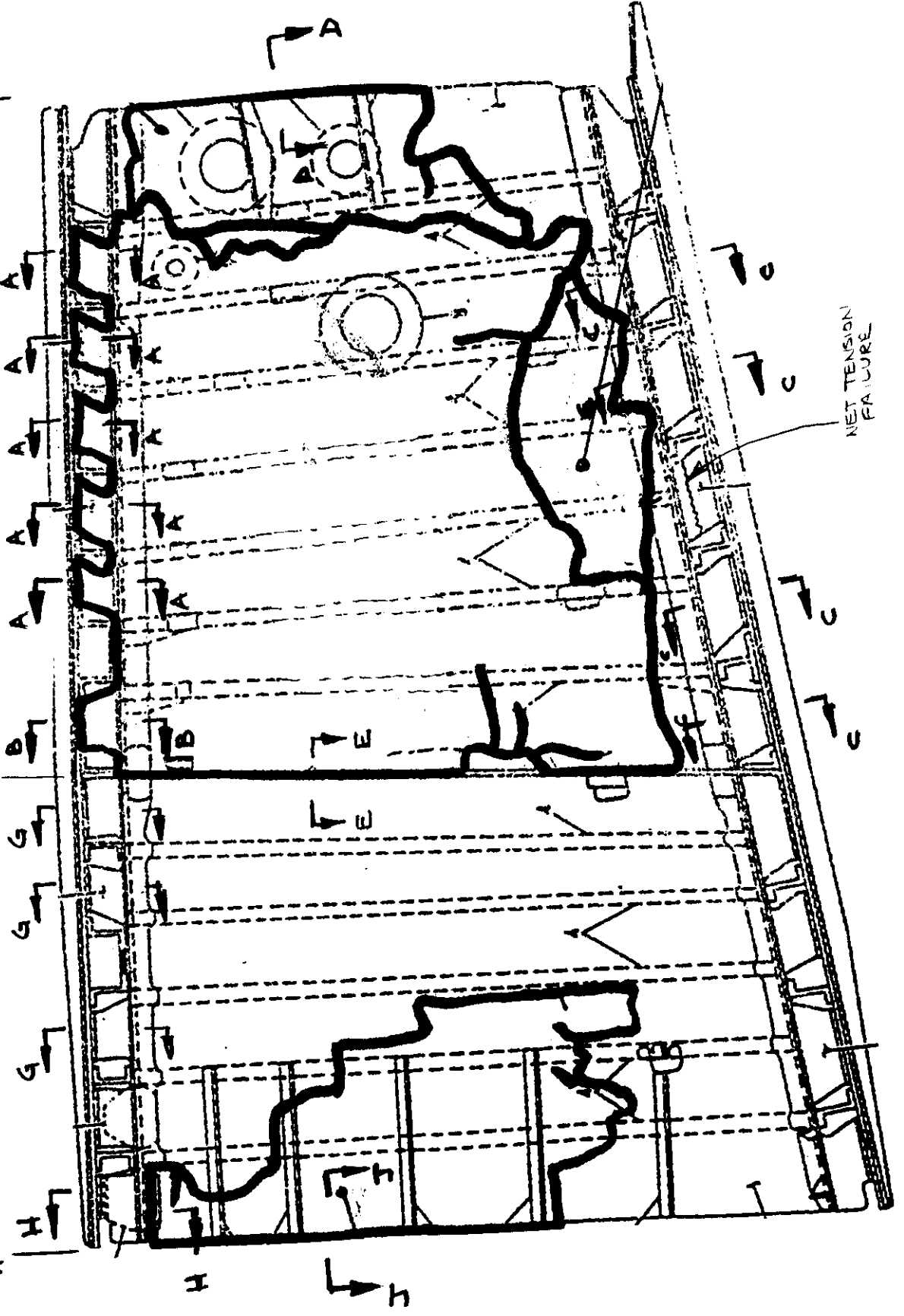
PRELIMINARY

BL Ø RIB FAILURE DIRECTION

R.S
⊕

S.W.B
#1

M.S.



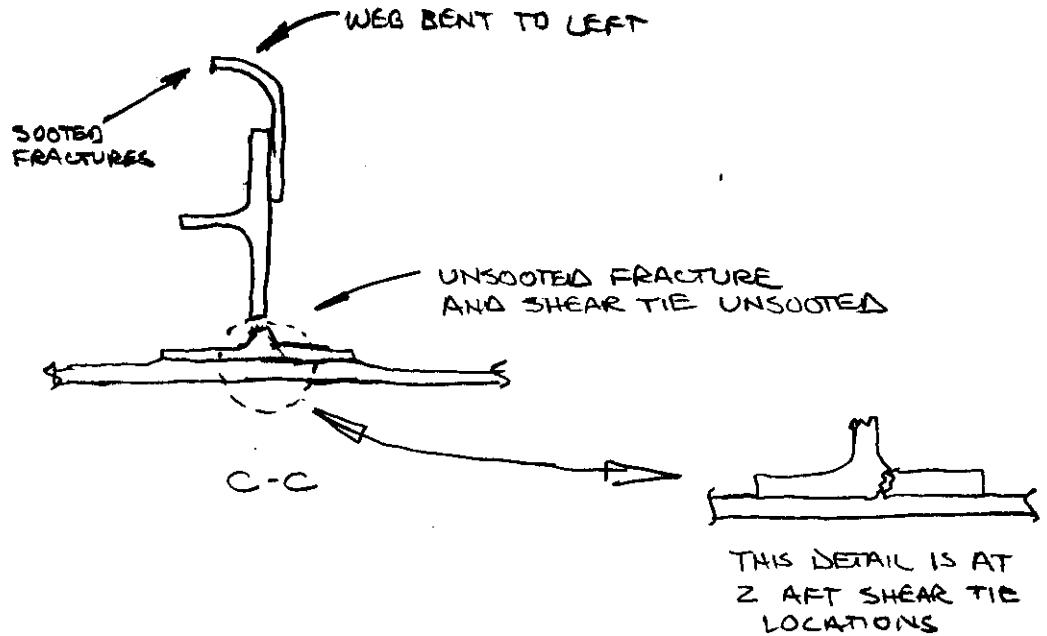
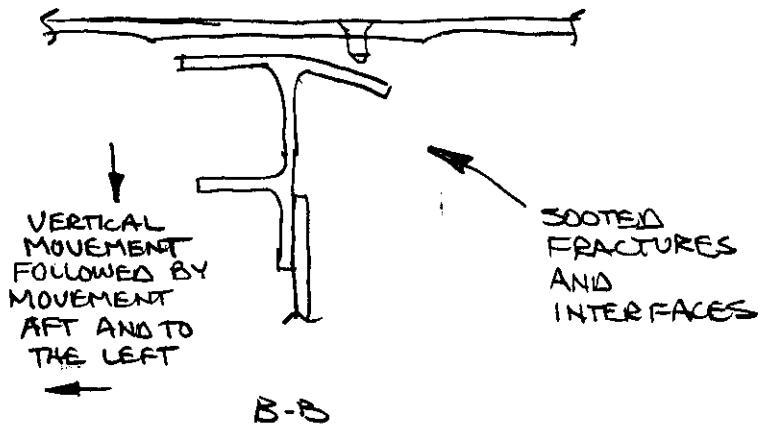
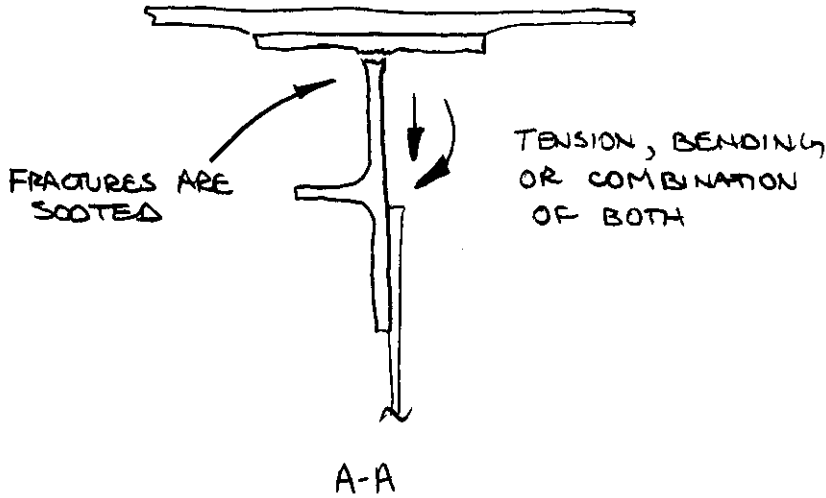
Warrington Stamped 11/2/63

PRELIMINARY

THESE ARE OBSERVATIONS BY BOEING ONLY AND WILL REQUIRE CONCURRENCE FROM OTHER PARTIES

W. Stewart 11/2/96

[Signature] 11/4/96

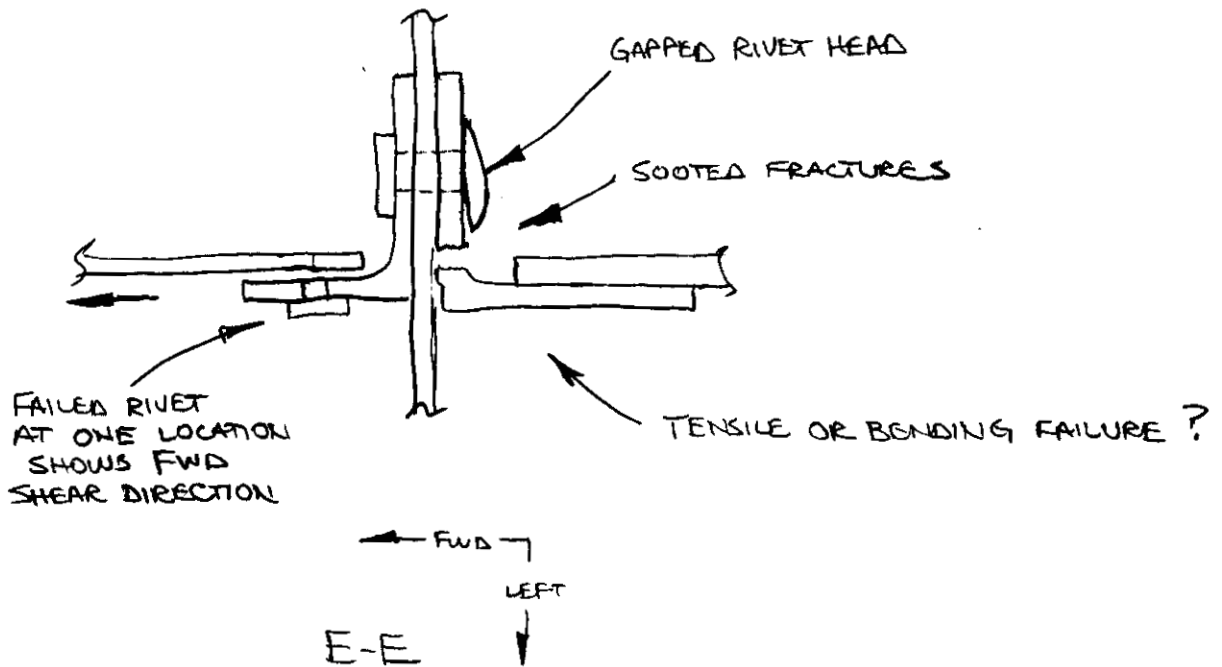
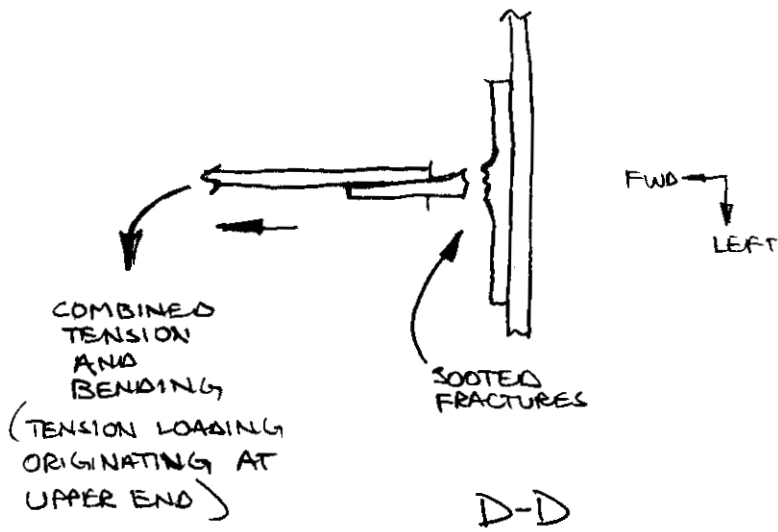


PRELIMINARY

THESE ARE OBSERVATIONS
BY BOEING AND WILL
REQUIRE CONCURRENCE
BY OTHER PARTIES

W. Stuyent 11/2/96

~~W. Stuyent~~ 11/2/96



PRELIMINARY

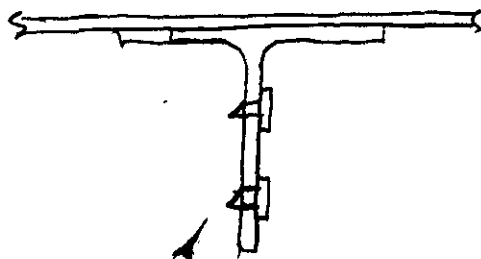
THESE ARE OBSERVATIONS
BY BOEING ONLY AND WILL
REQUIRE CONCURRENCE
BY OTHER PARTIES

W. Stewart 11/2/96
~~W. Stewart~~ 11/2/96



SOME EXHIBIT POSSIBLE
INDICATIONS OF
BENDING

G-G



REMAINING RIVETS SHOW SHEAR
AND MOVEMENT TO THE LEFT.

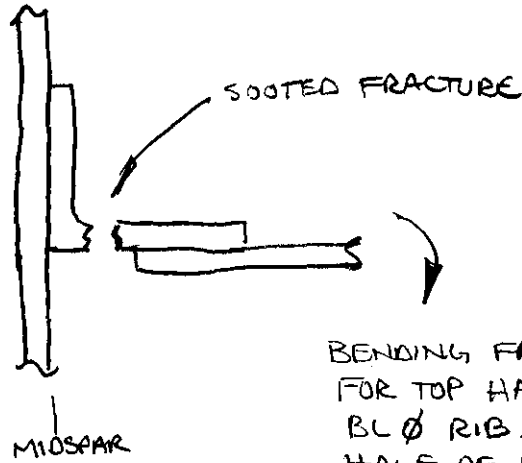
H-H

PRELIMINARY

THESE ARE OBSERVATIONS
BY BOEING ONLY AND WILL
REQUIRE CONCURRENCE BY
OTHER PARTIES

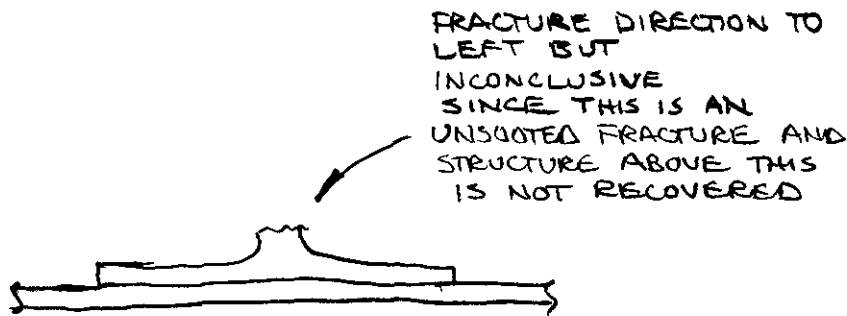
W. Stewart 11/2/96

~~576~~ 11/2/96



BENDING FAILURE
FOR TOP HALF OF
BL Ø RIB. BOTTOM
HALF OF RIB IS
INCONCLUSIVE.

J-J



FRACTURE DIRECTION TO
LEFT BUT
INCONCLUSIVE
SINCE THIS IS AN
UNSOOTED FRACTURE AND
STRUCTURE ABOVE THIS
IS NOT RECOVERED

K-K