

Attachment A Figures & Photographs

American Airlines Flt. 587 - Radar Based Flight Path & Debris Field

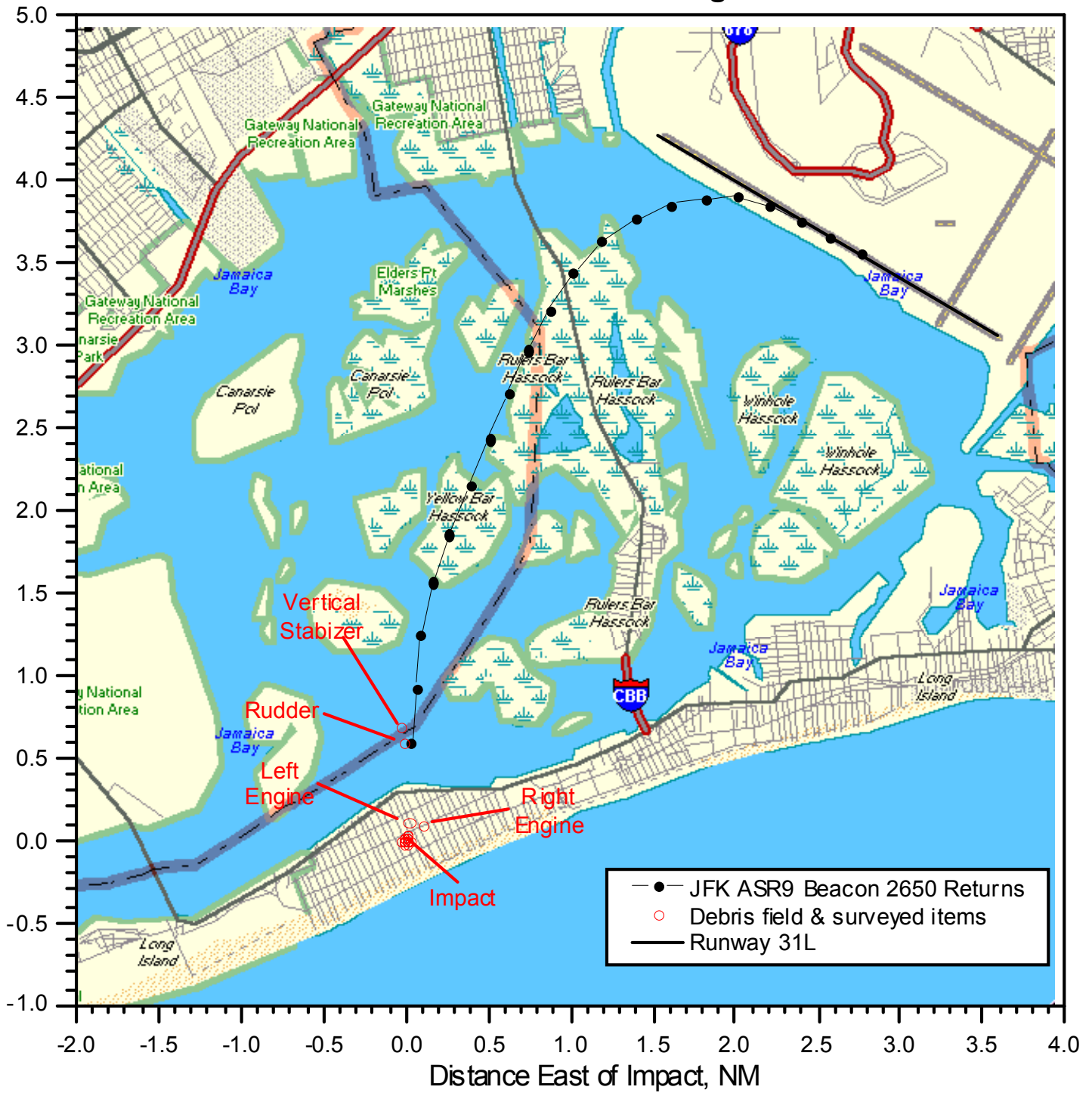


FIGURE 1

American Airlines Flt. 587 Wreckage Diagram (1)

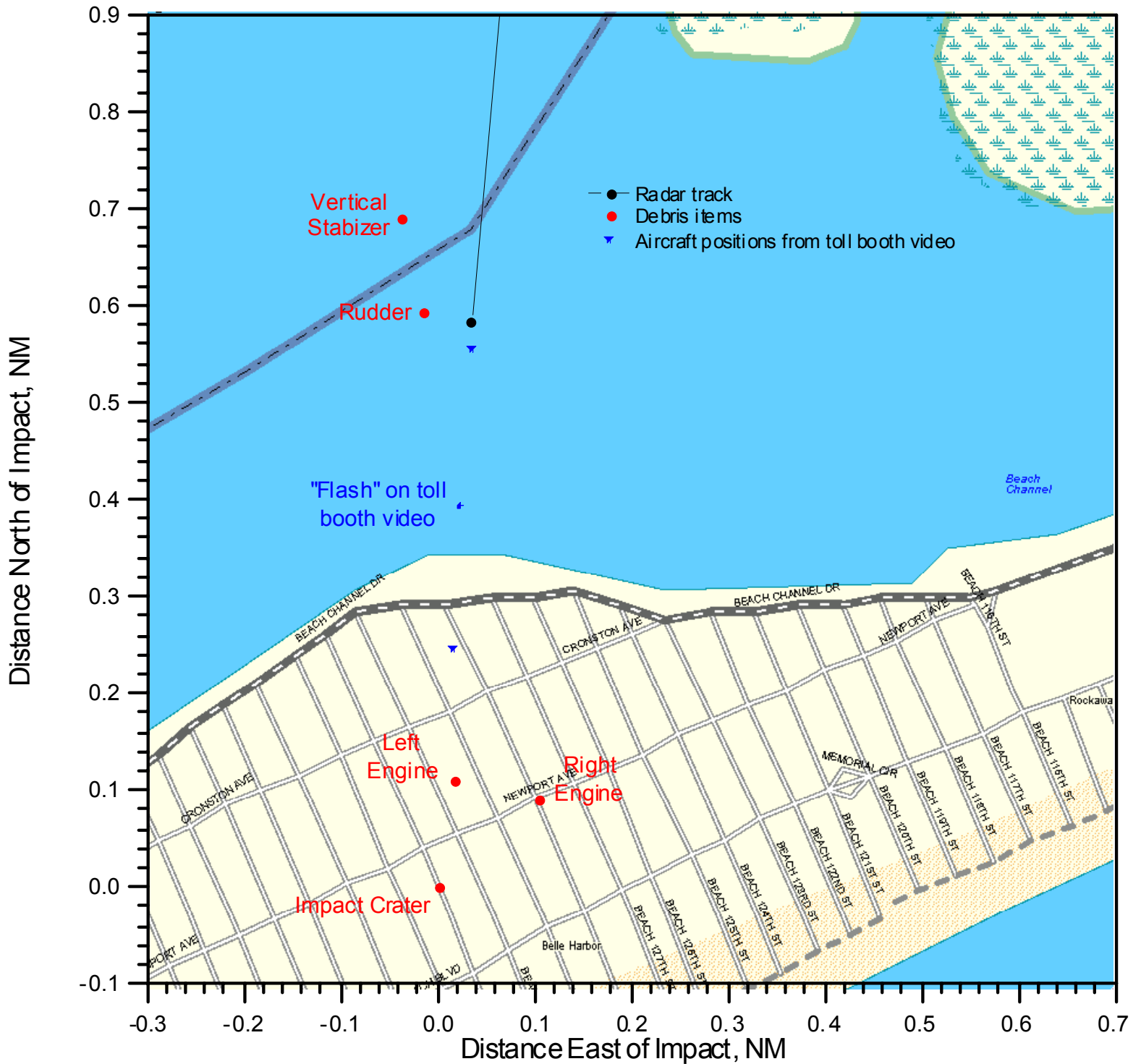


FIGURE 2

American Airlines Flt. 587 Wreckage Diagram (2)

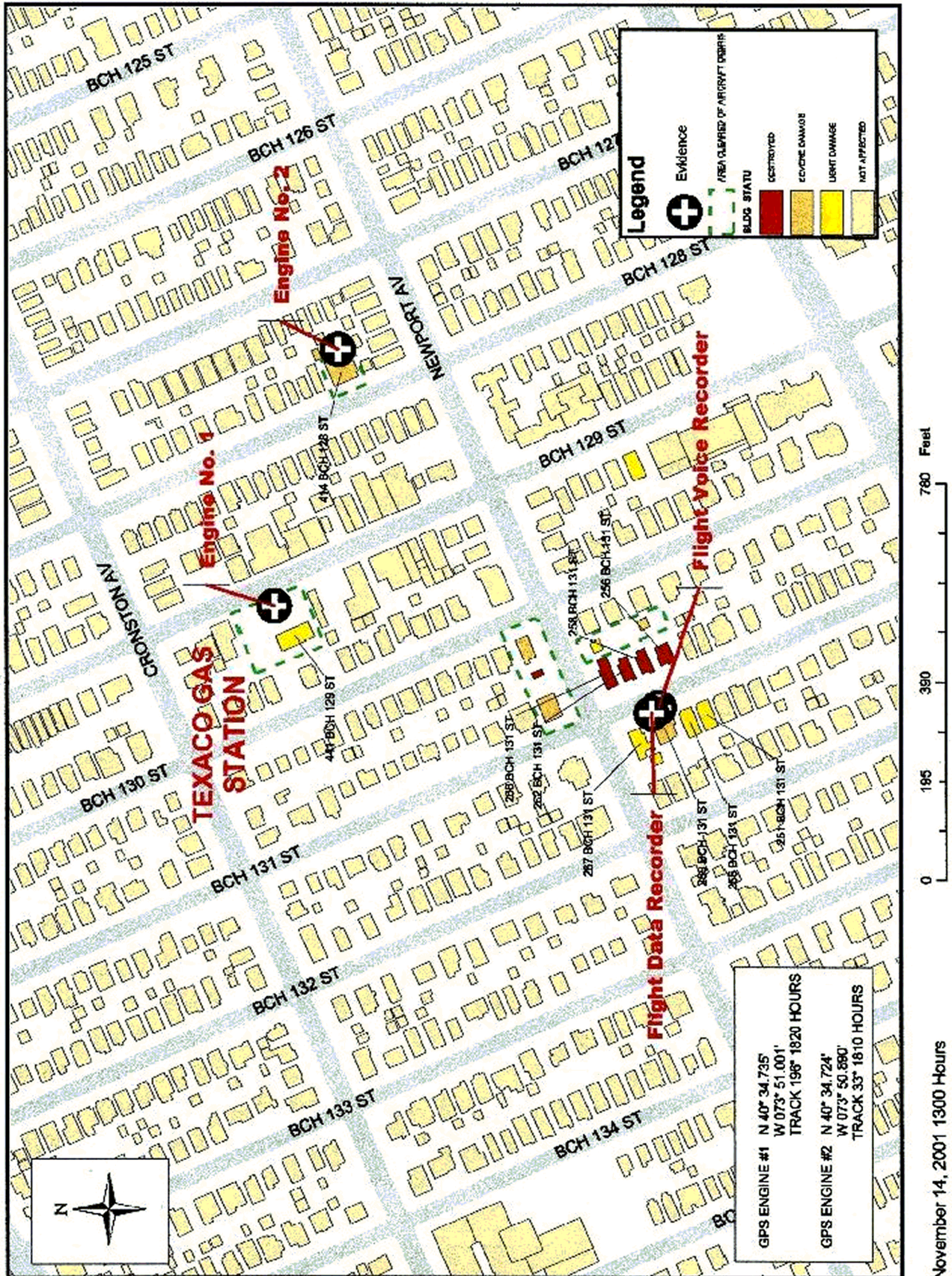


Figure 3

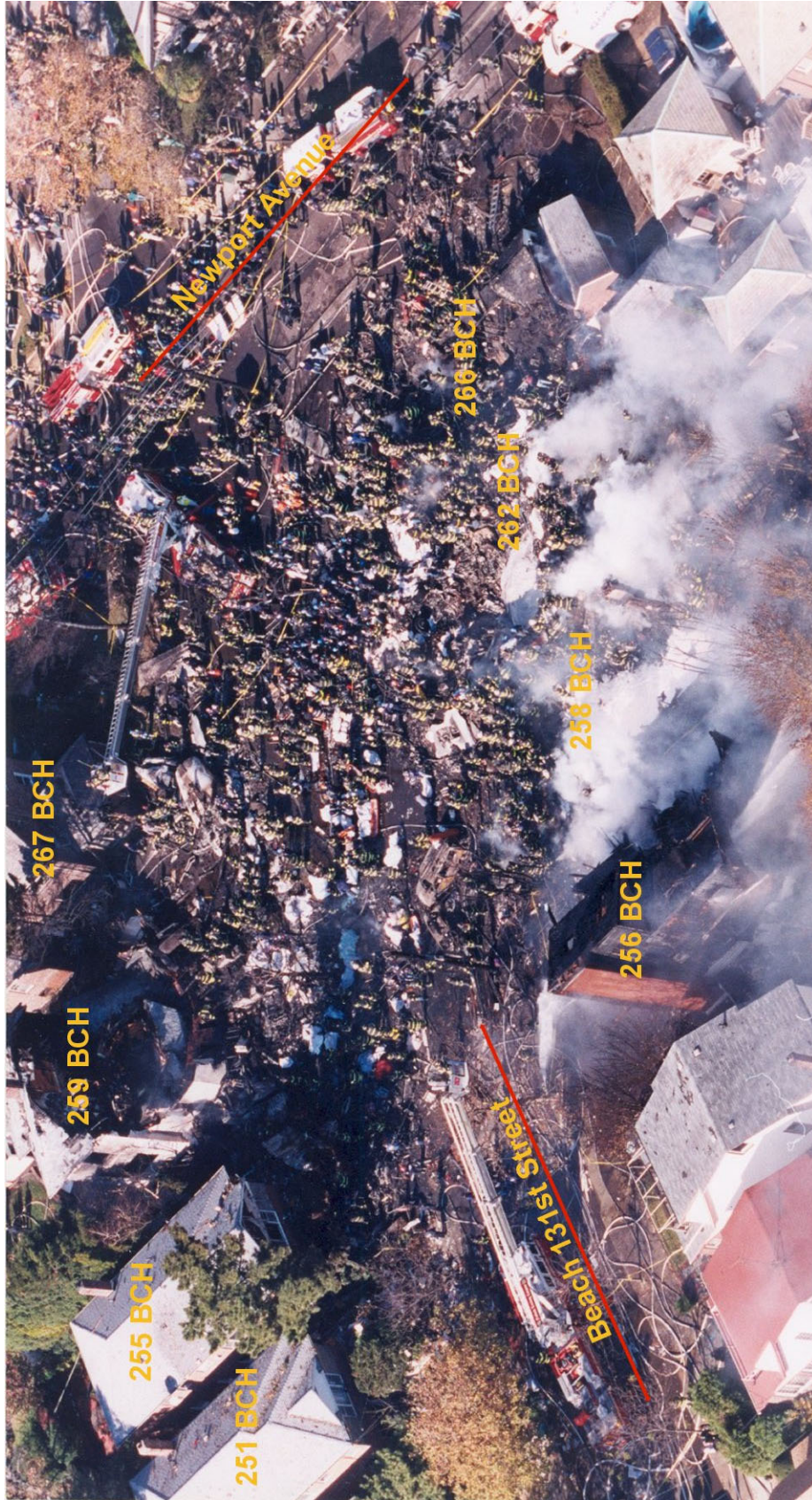


FIGURE 4

American Airlines Flt. 587 Wreckage Diagram (3)

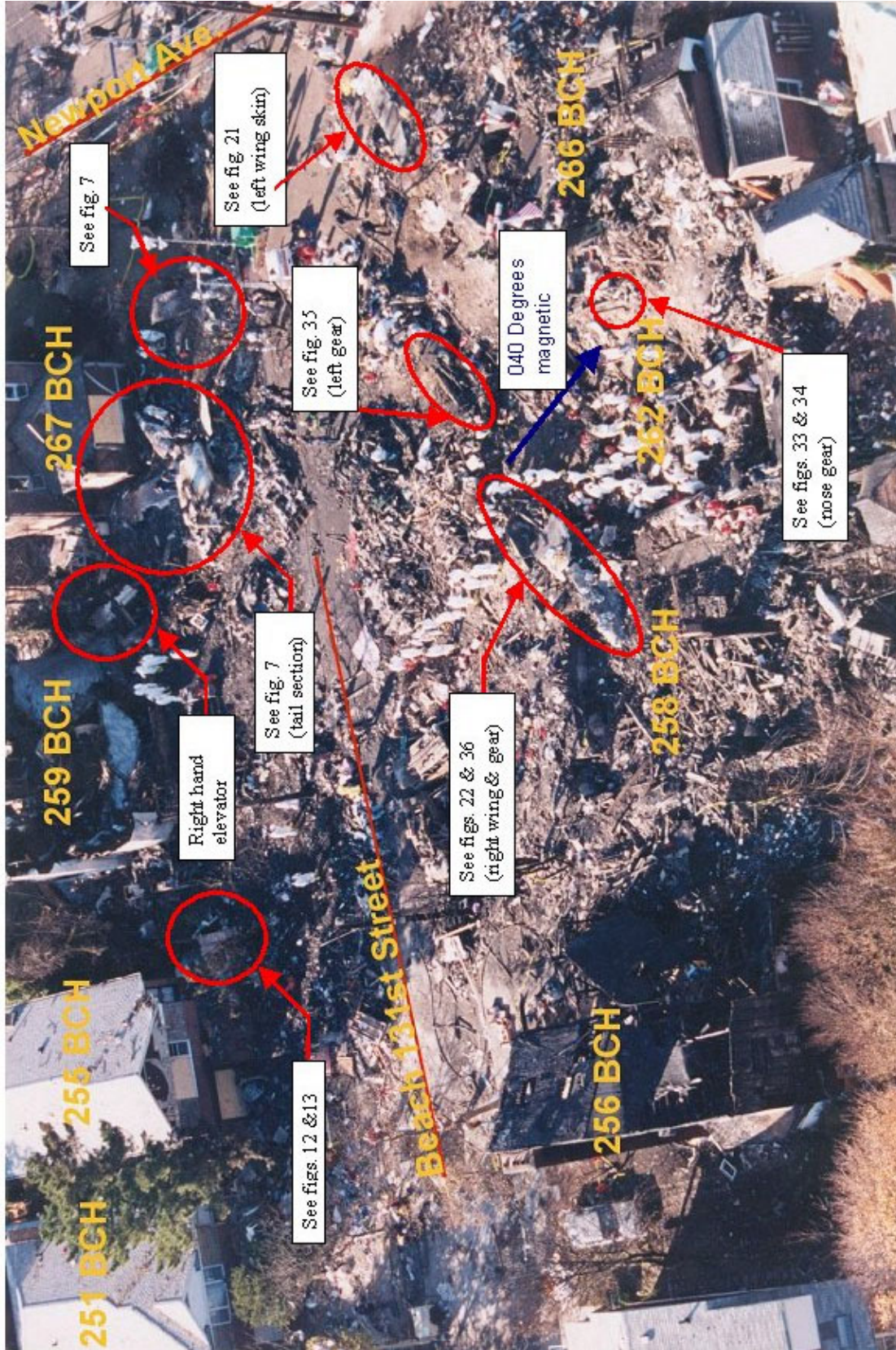


Figure 5

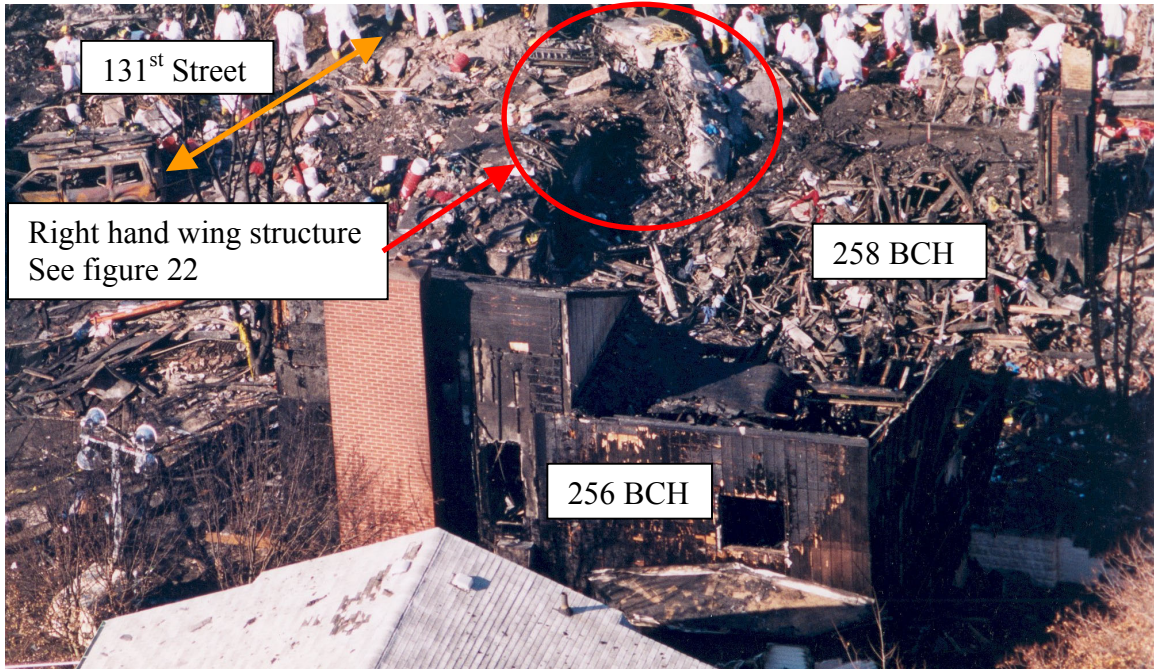


FIGURE 6

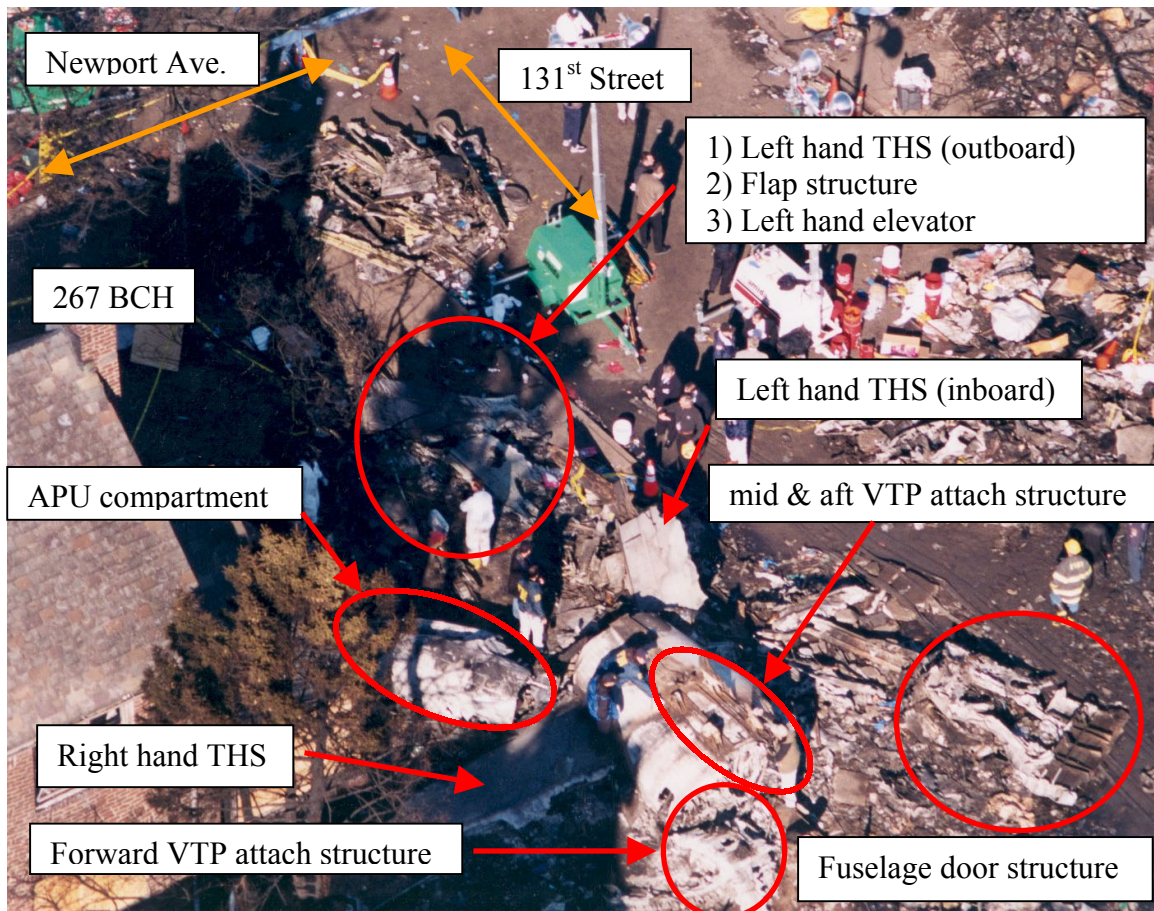


FIGURE 7



FIGURE 8

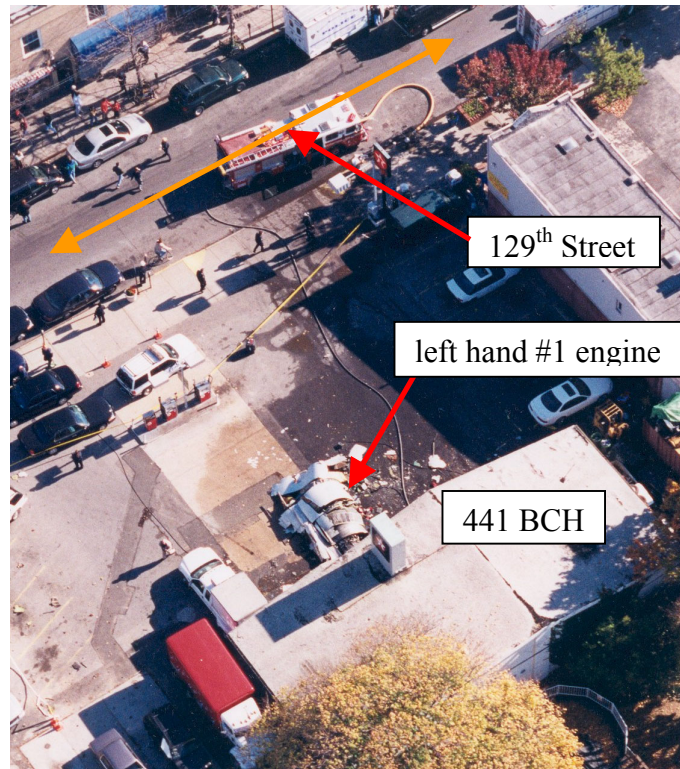


FIGURE 9

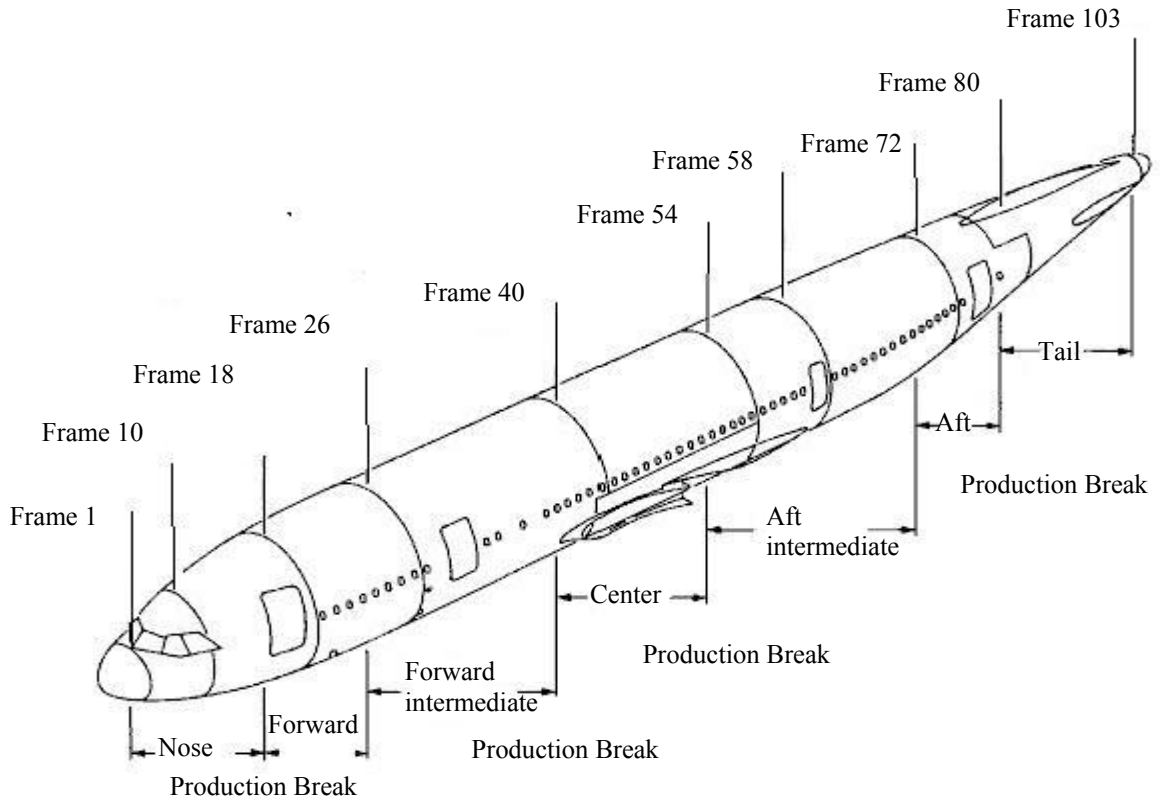


FIGURE 10

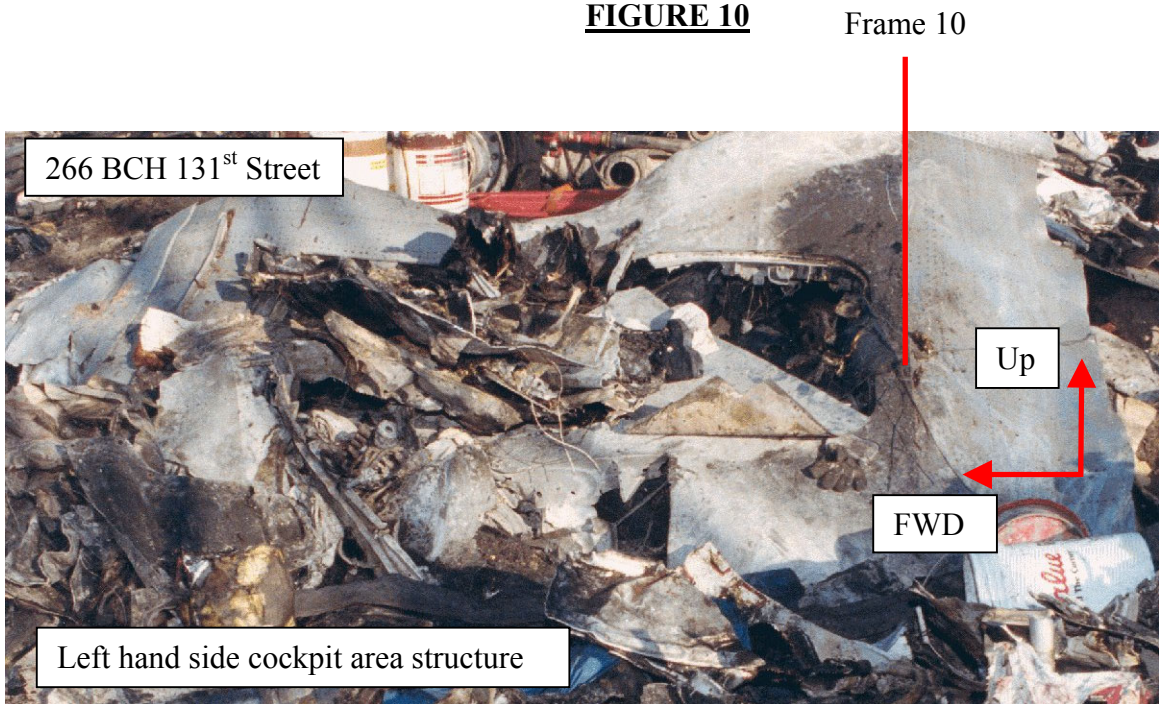


FIGURE 11



FIGURE 12



FIGURE 13

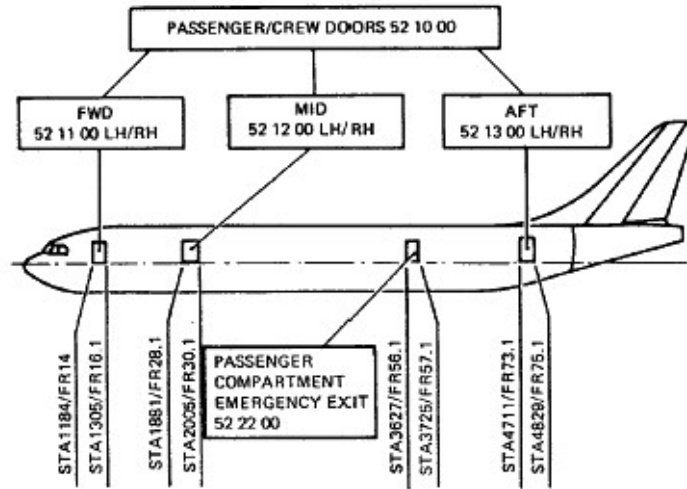


FIGURE 14



FIGURE 15

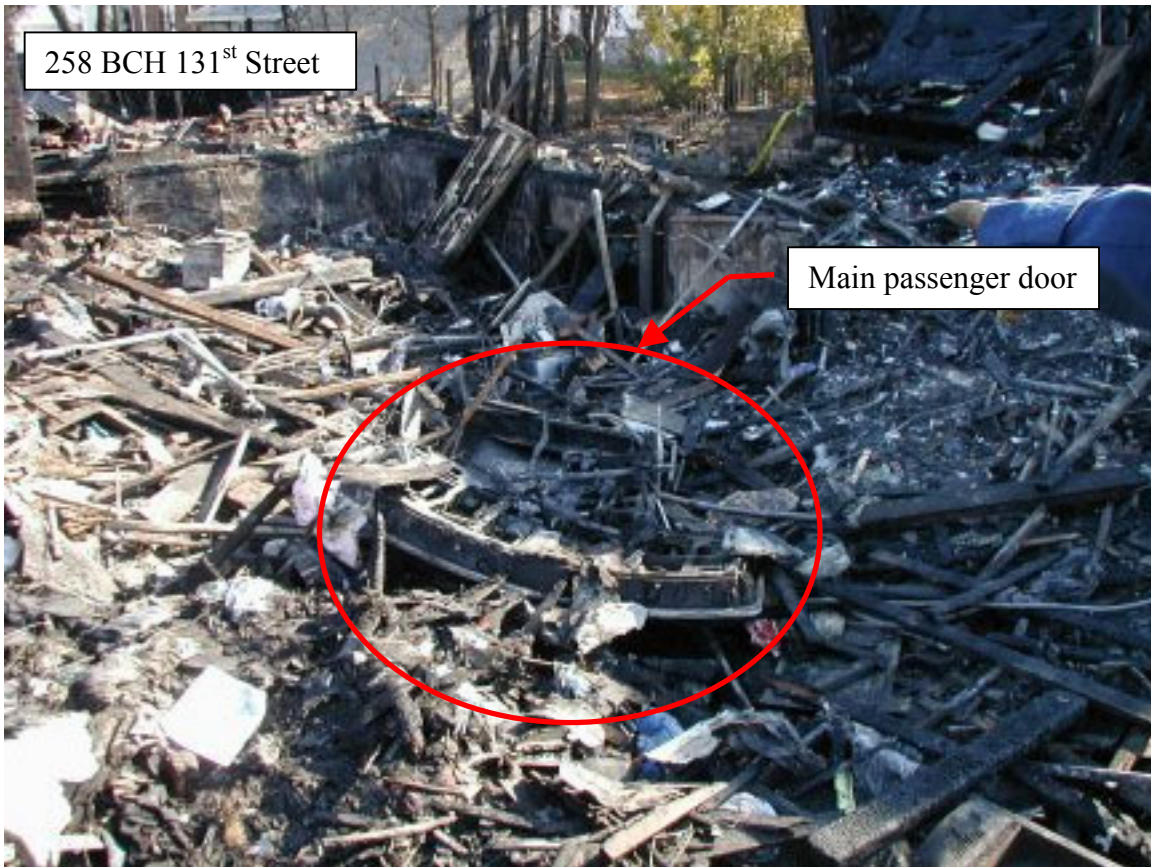


FIGURE 16

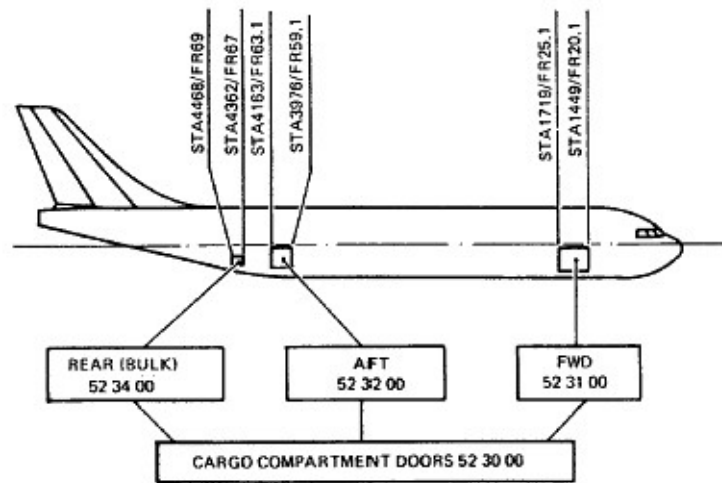


FIGURE 17



FIGURE 18



FIGURE 19

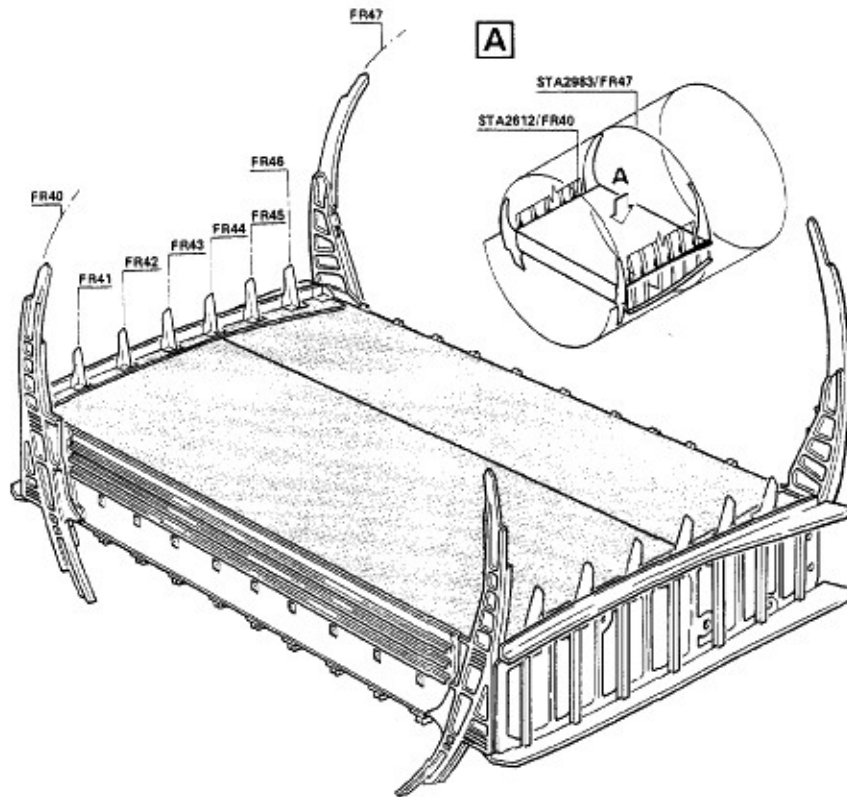
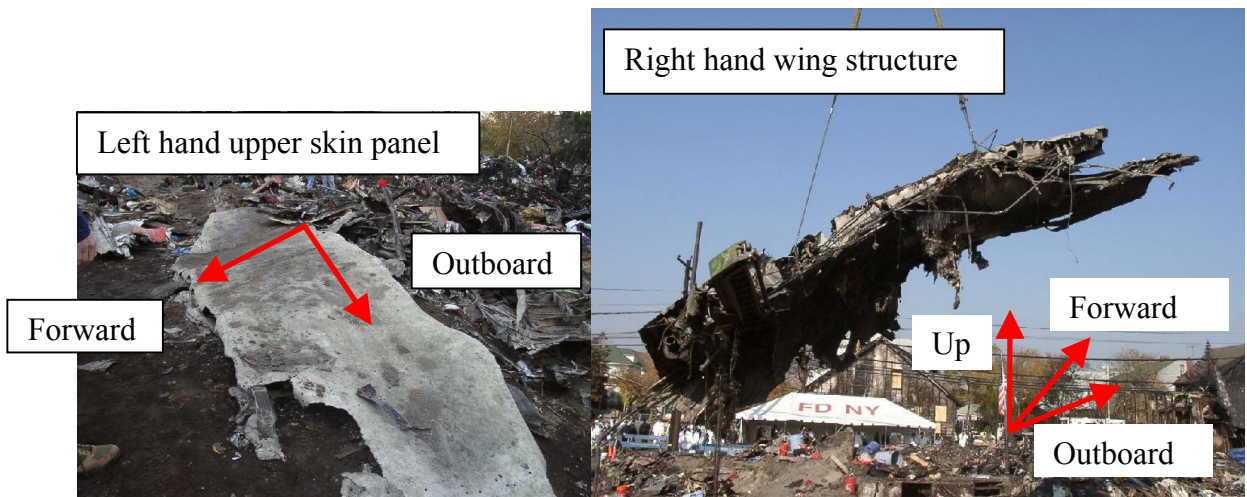


FIGURE 20



FIGURES 21 & 22

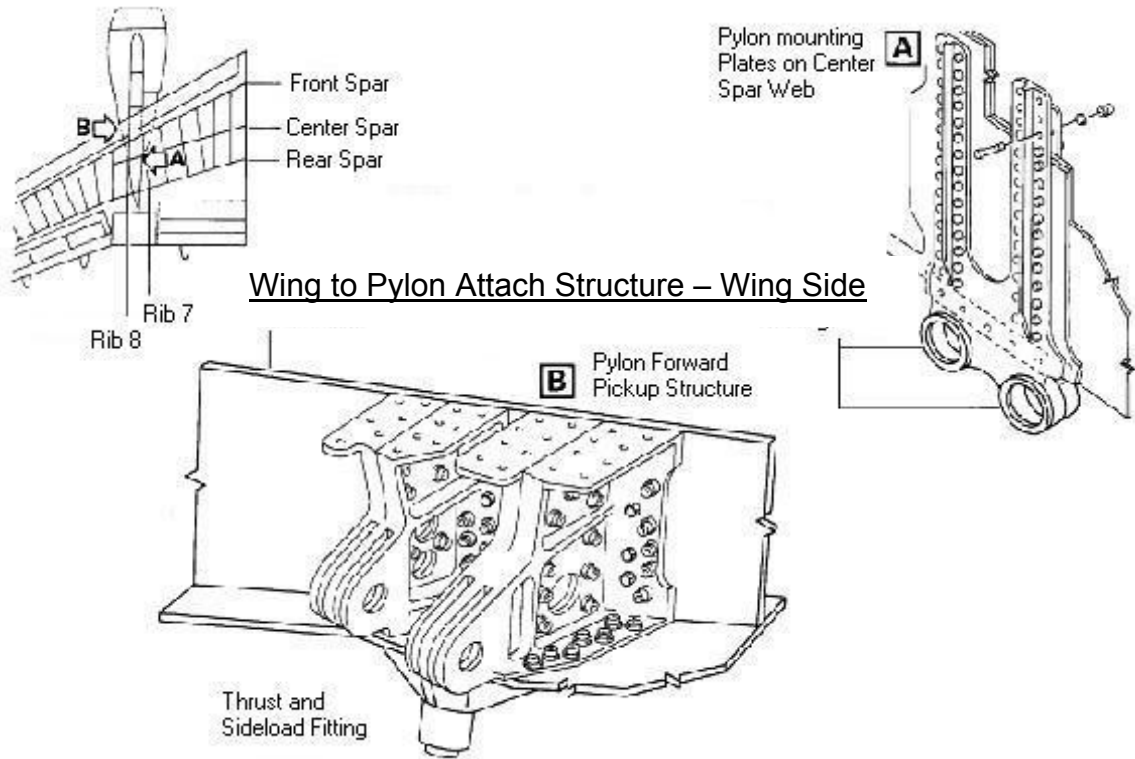


FIGURE 23

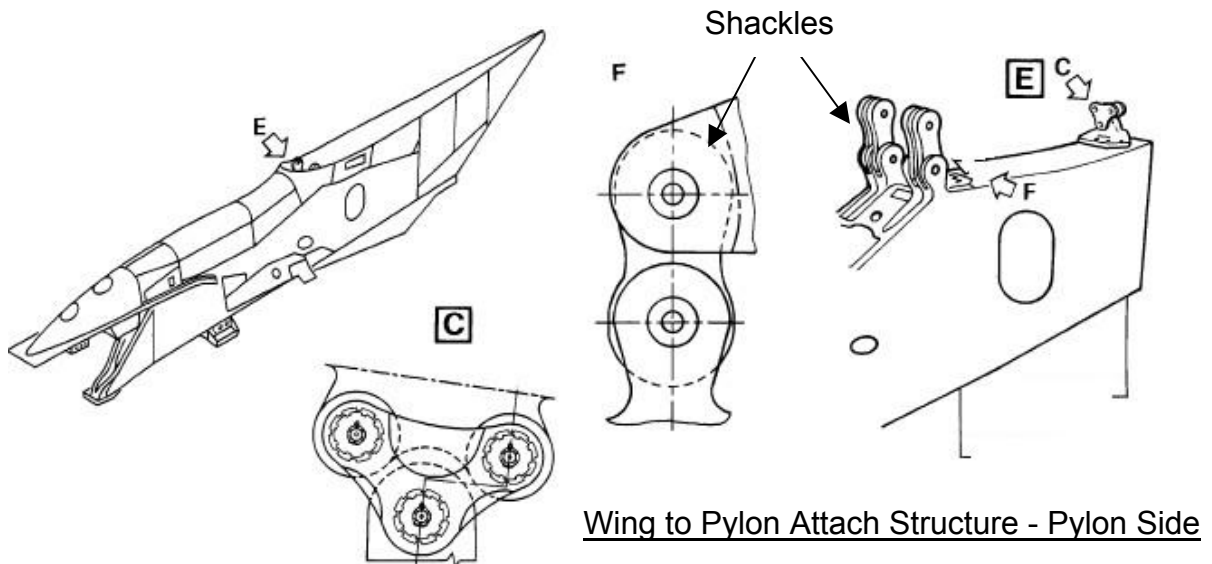


FIGURE 24



FIGURE 25

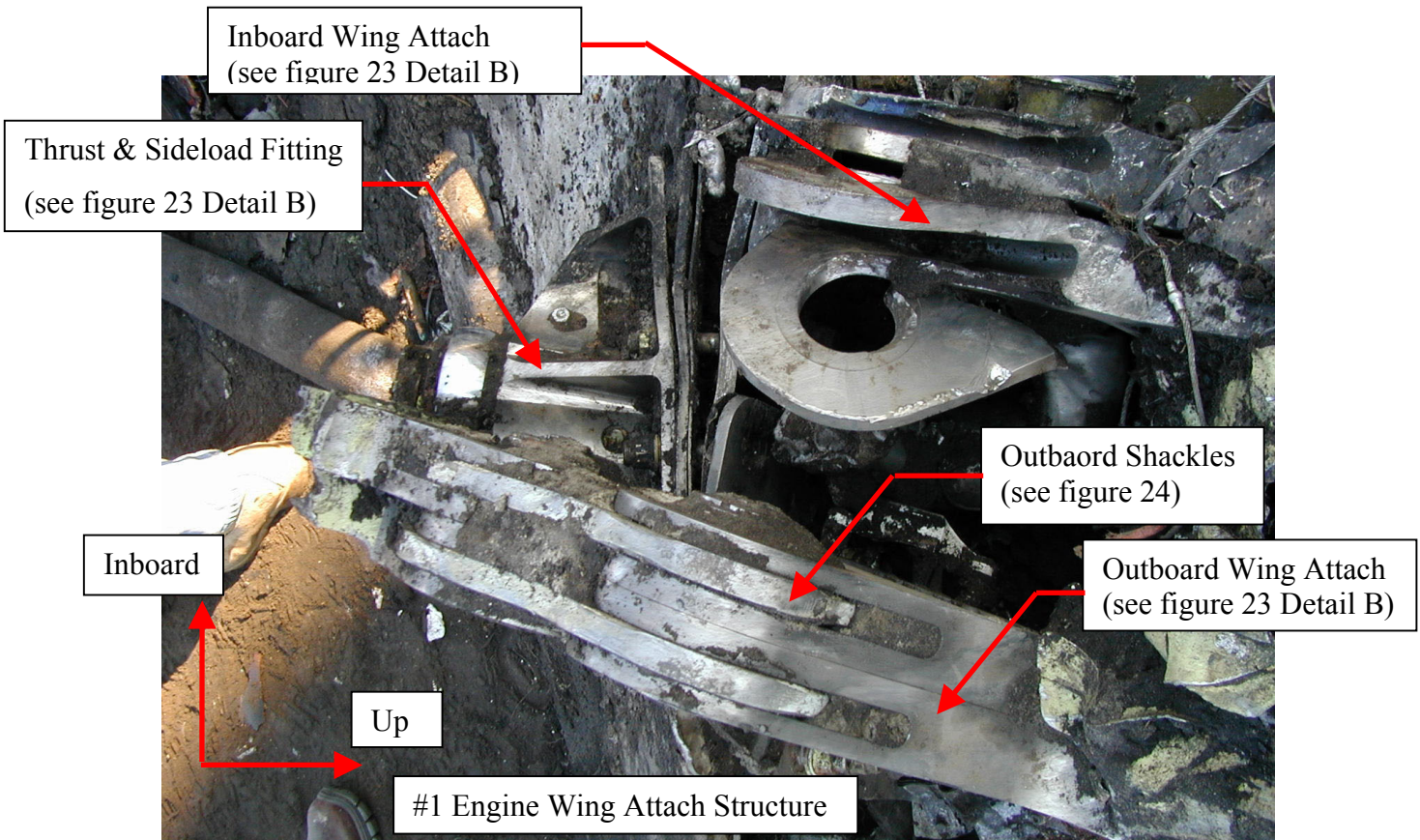


FIGURE 26

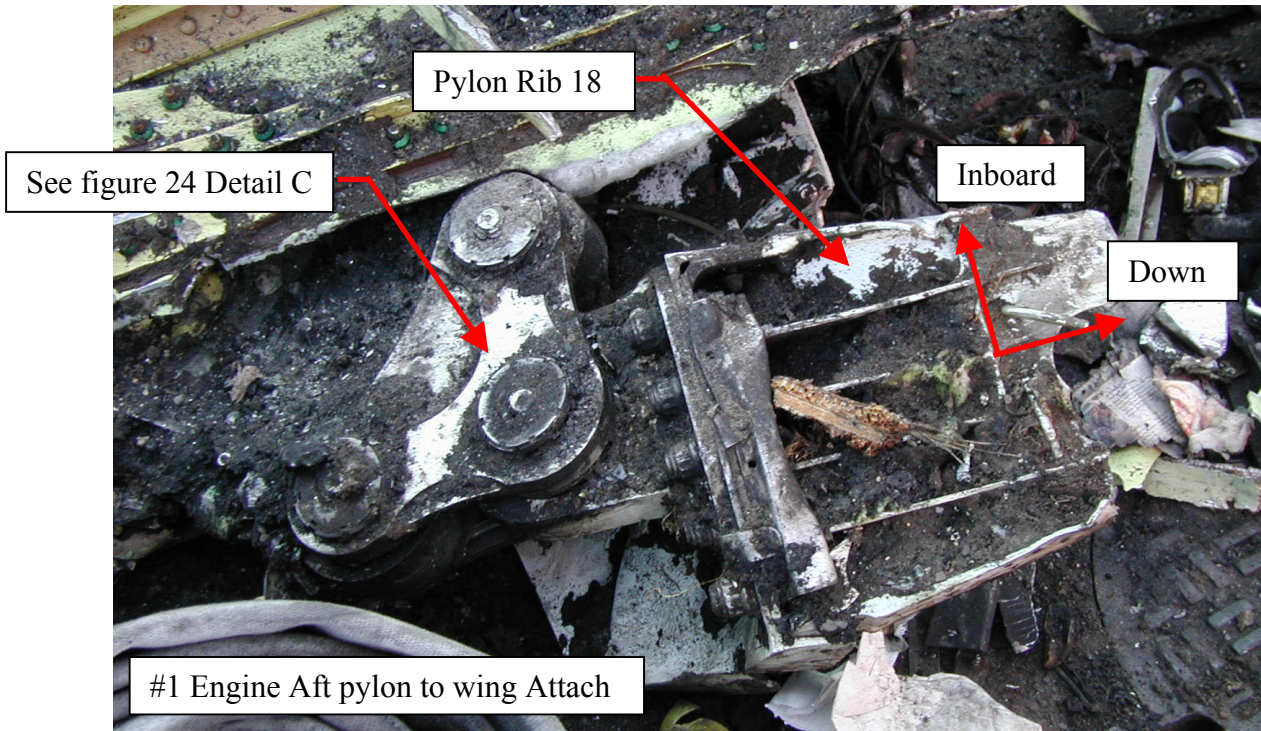


FIGURE 27

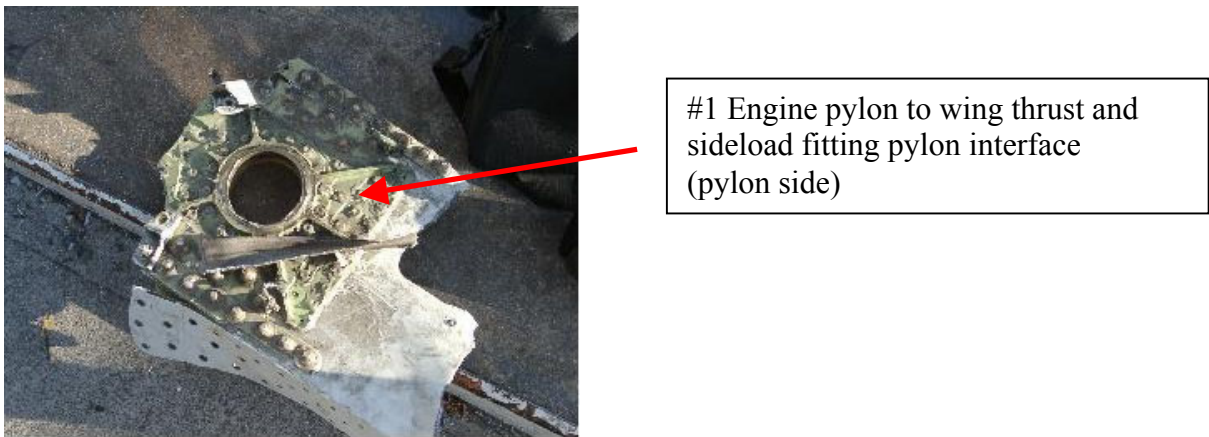


FIGURE 28

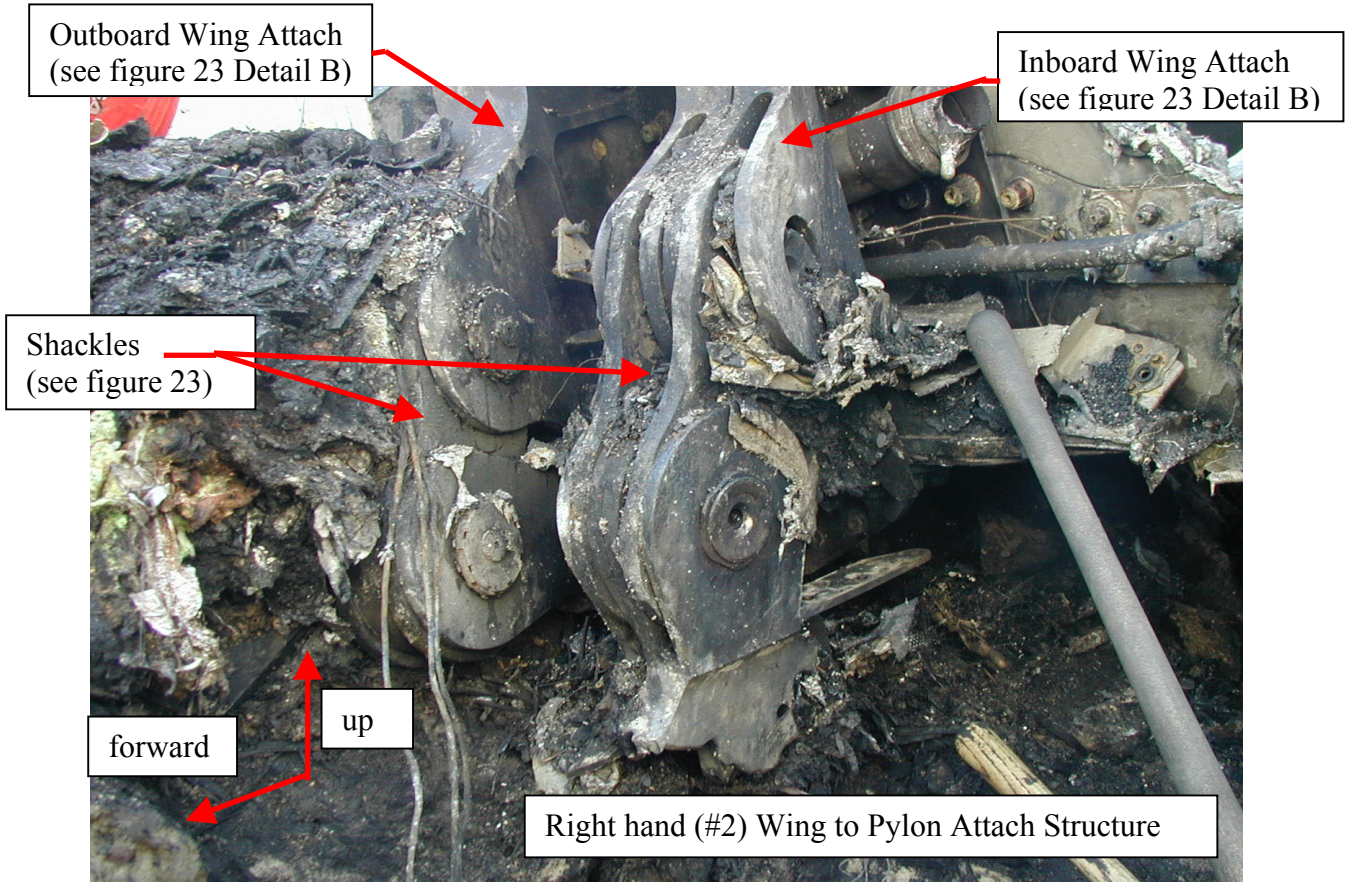


FIGURE 29

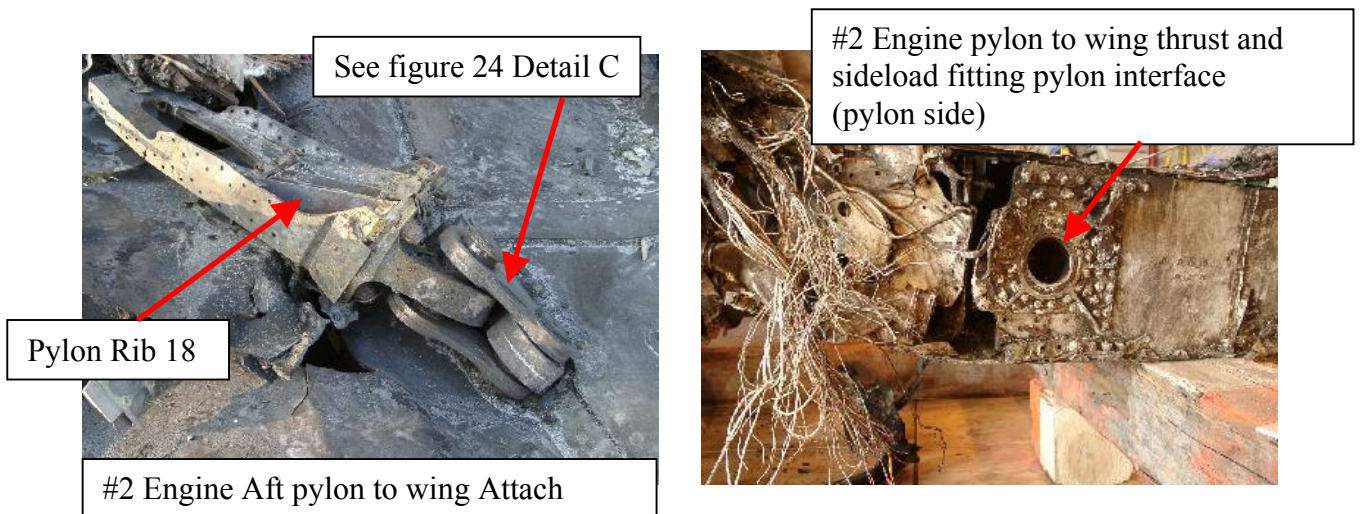


FIGURE 30 & 31

LAND GEAR CONFIGURATION

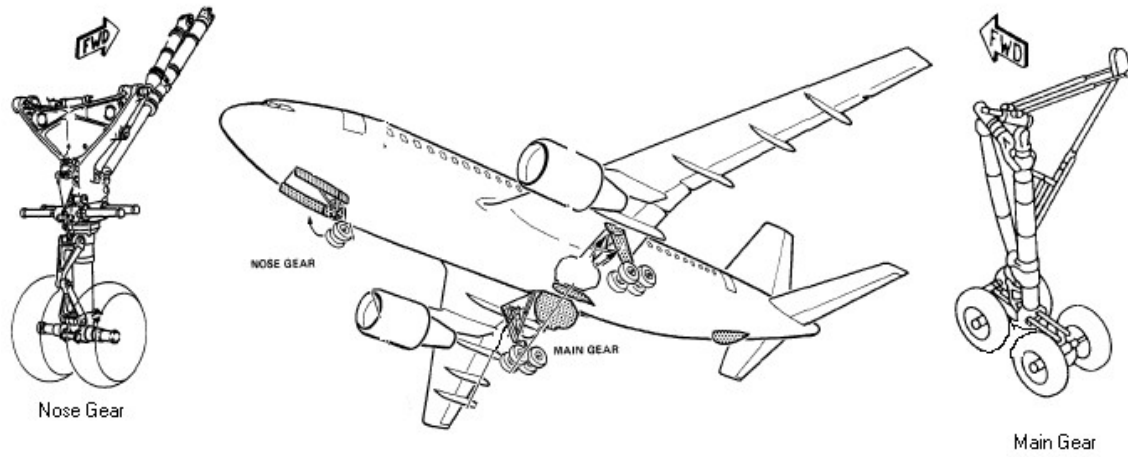


FIGURE 32

NOSE GEAR



FIGURE 33 & 34

LEFT MAIN LANDING GEAR



FIGURE 35

RIGHT MAIN LANDING



FIGURE 36

AFT FUSELAGE DETAIL

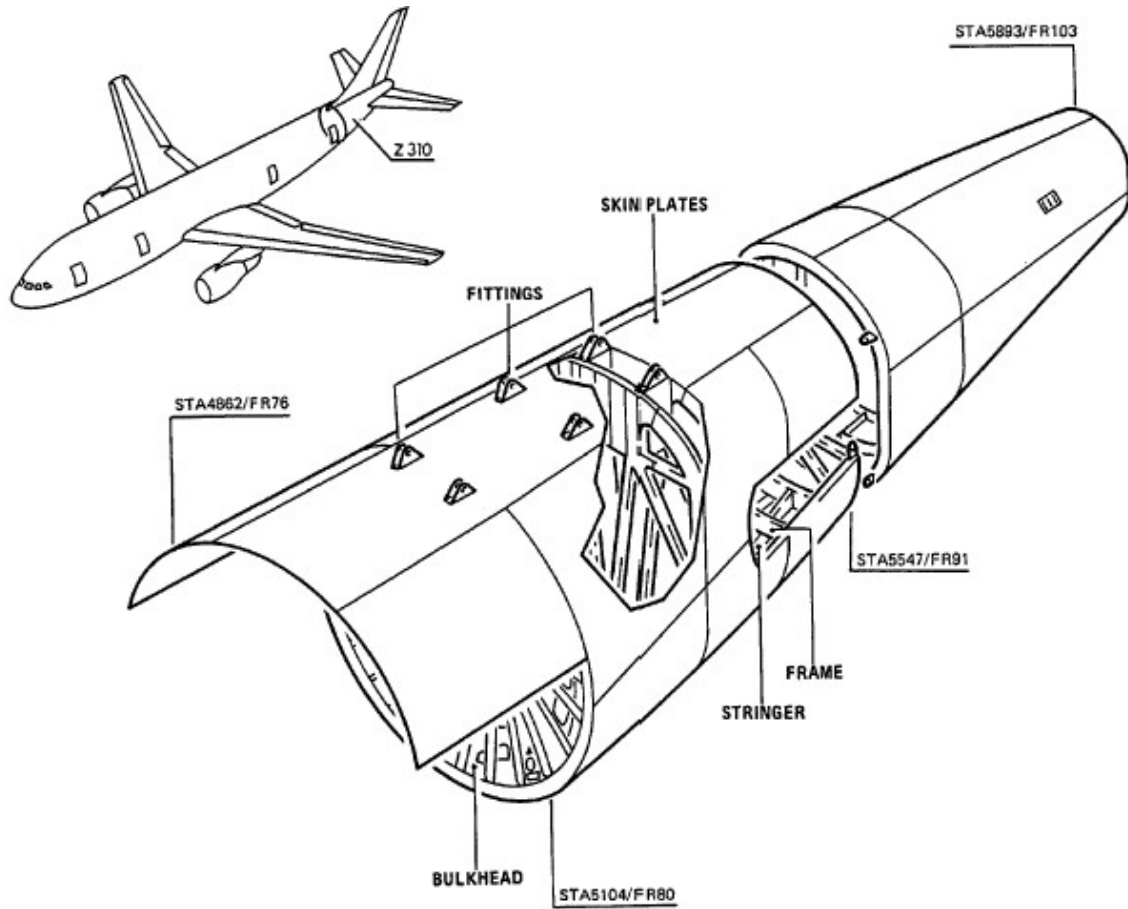


FIGURE 37

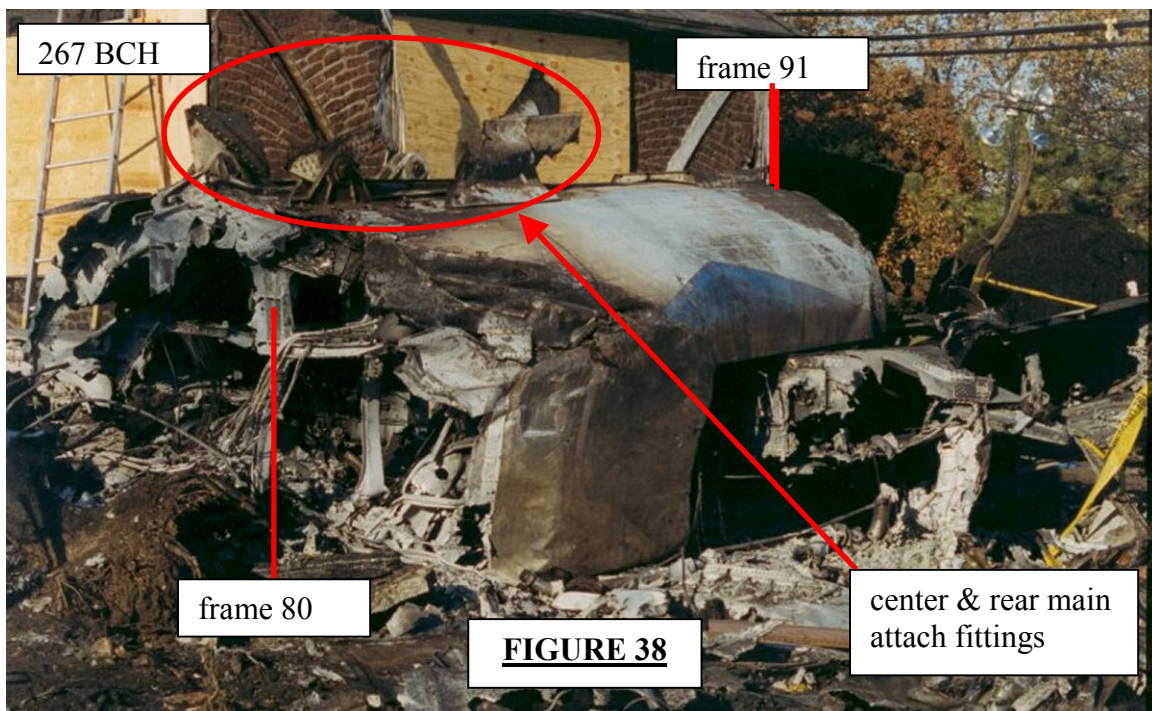


FIGURE 38

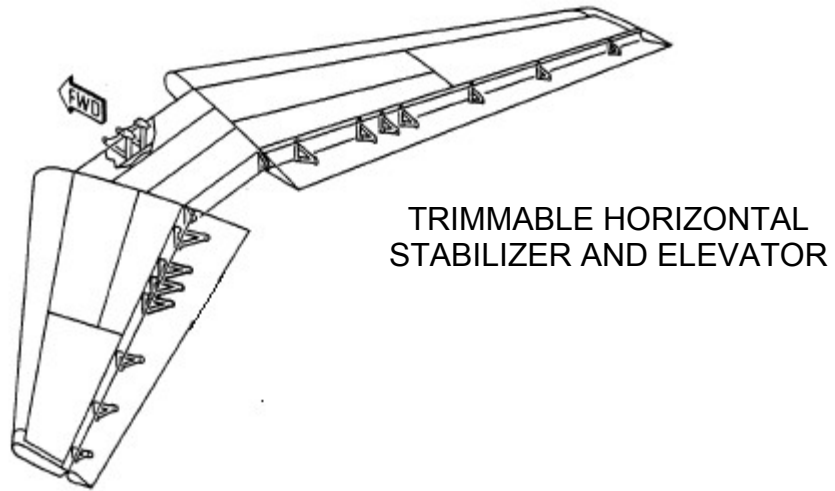


FIGURE 39

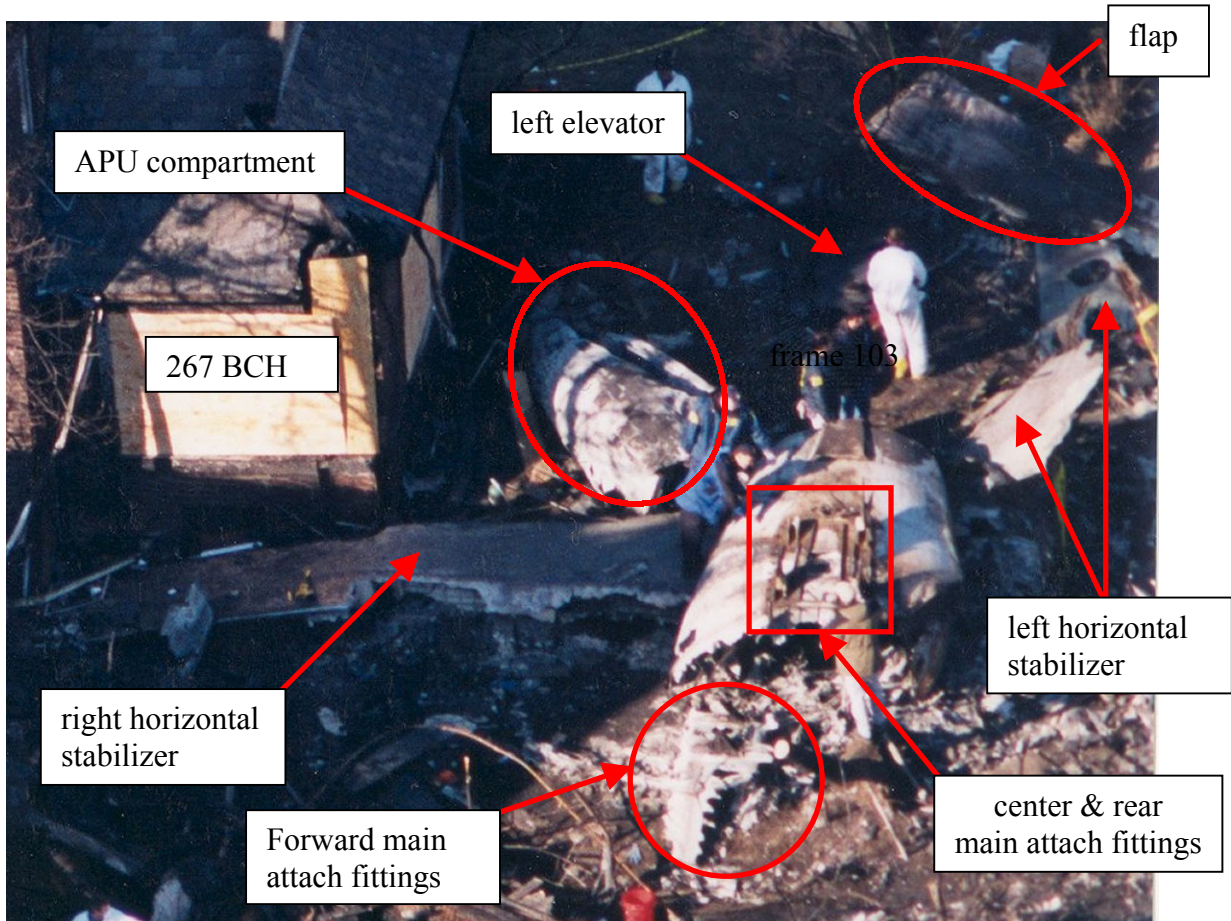


FIGURE 40

VTP AND RUDDER PLAN VIEW

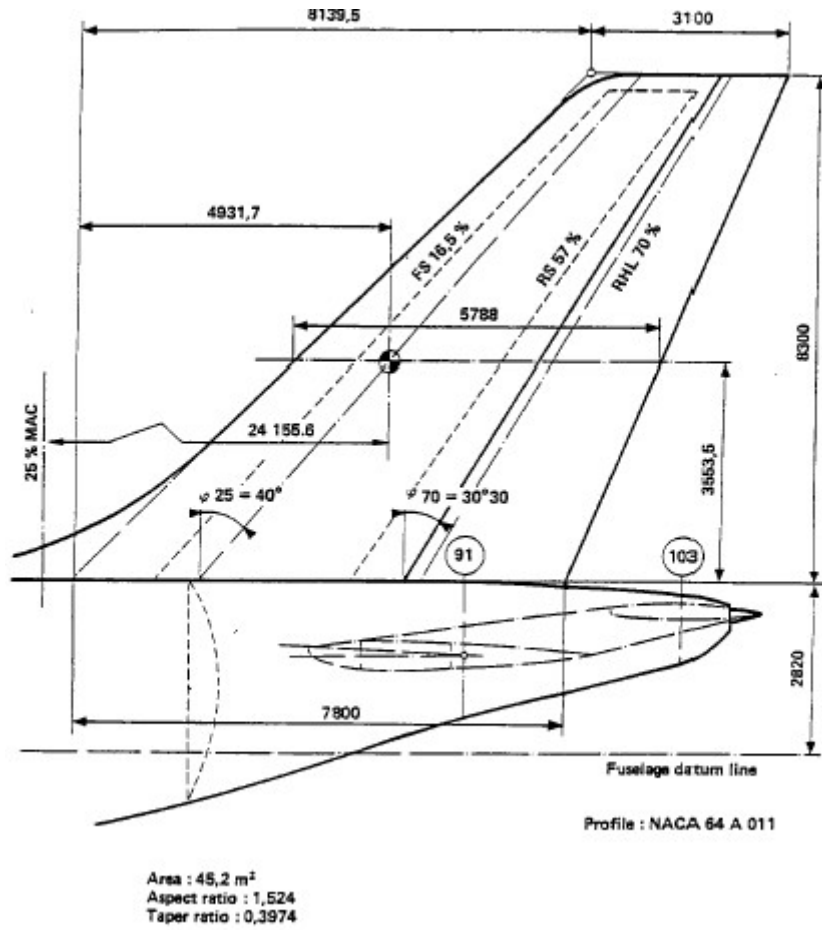


FIGURE 41

RUDDER OVERVIEW

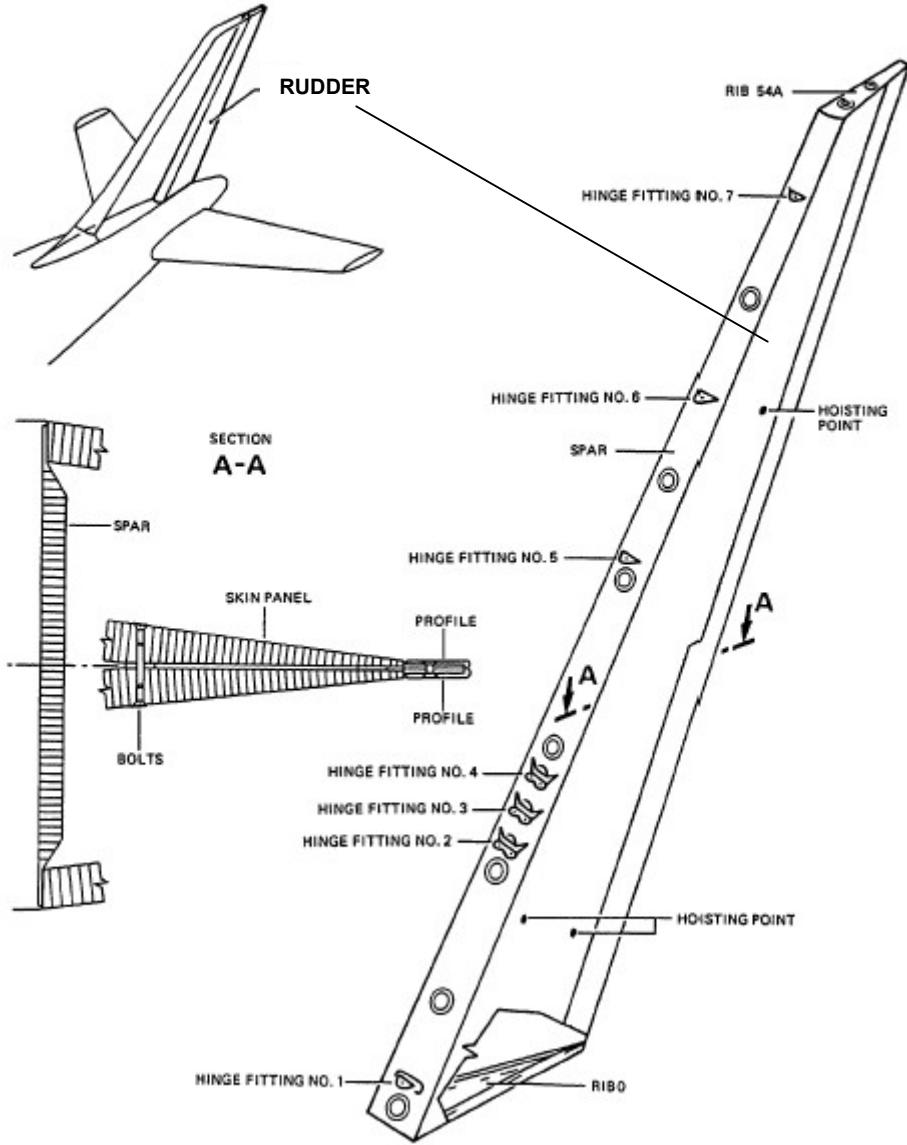


FIGURE 42

VTP TO AFT FUSELAGE ATTACH

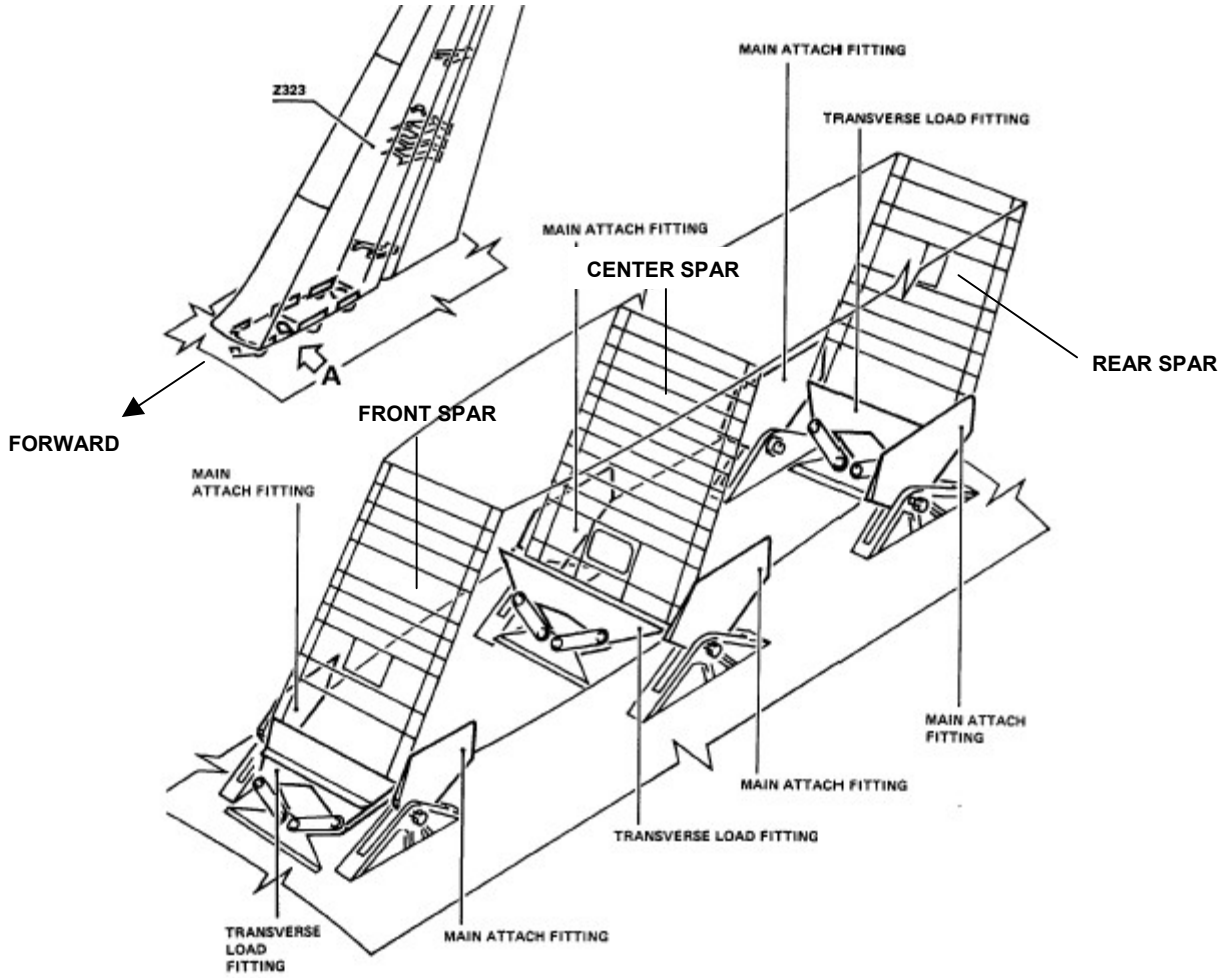
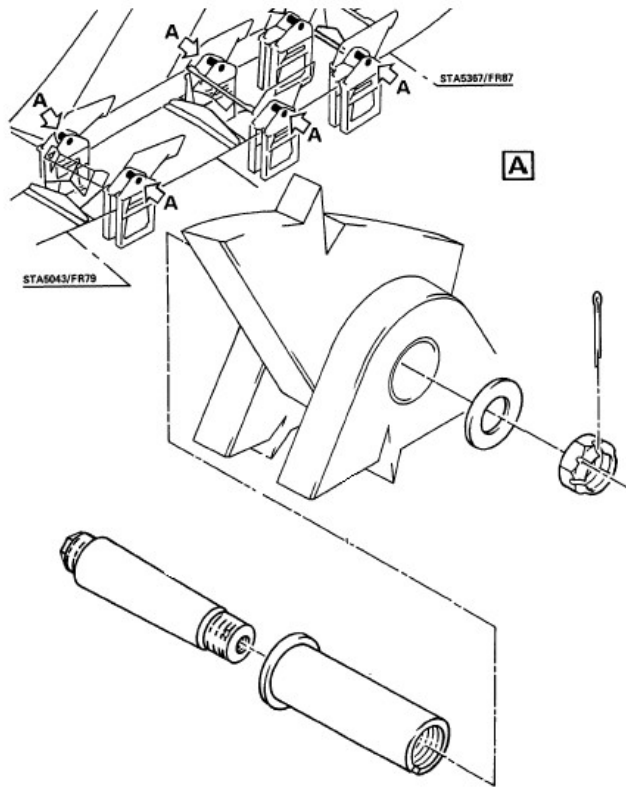


FIGURE 43



MAIN ATTACH
FITTING DETAIL

FIGURE 44

TRANSVERSE LOAD
FITTING DETAIL

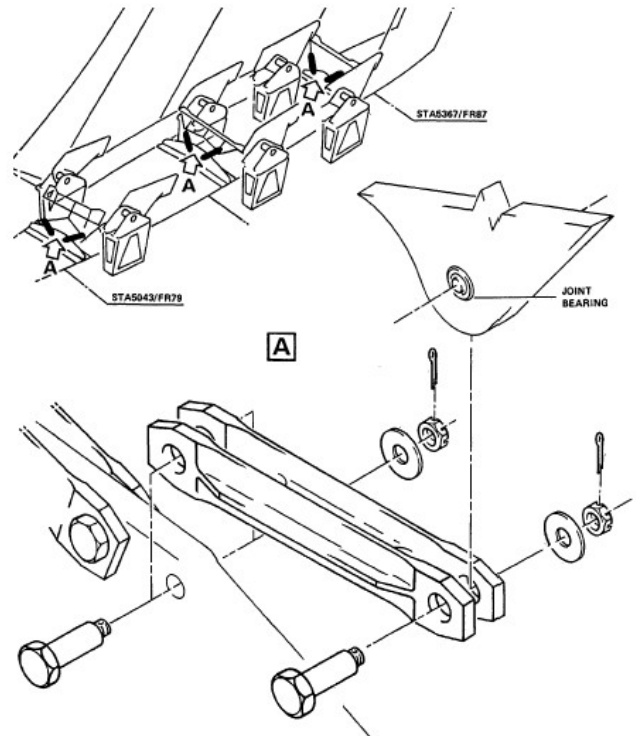


FIGURE 45

VTP TO RUDDER ATTACH FITTING DESCRIPTION

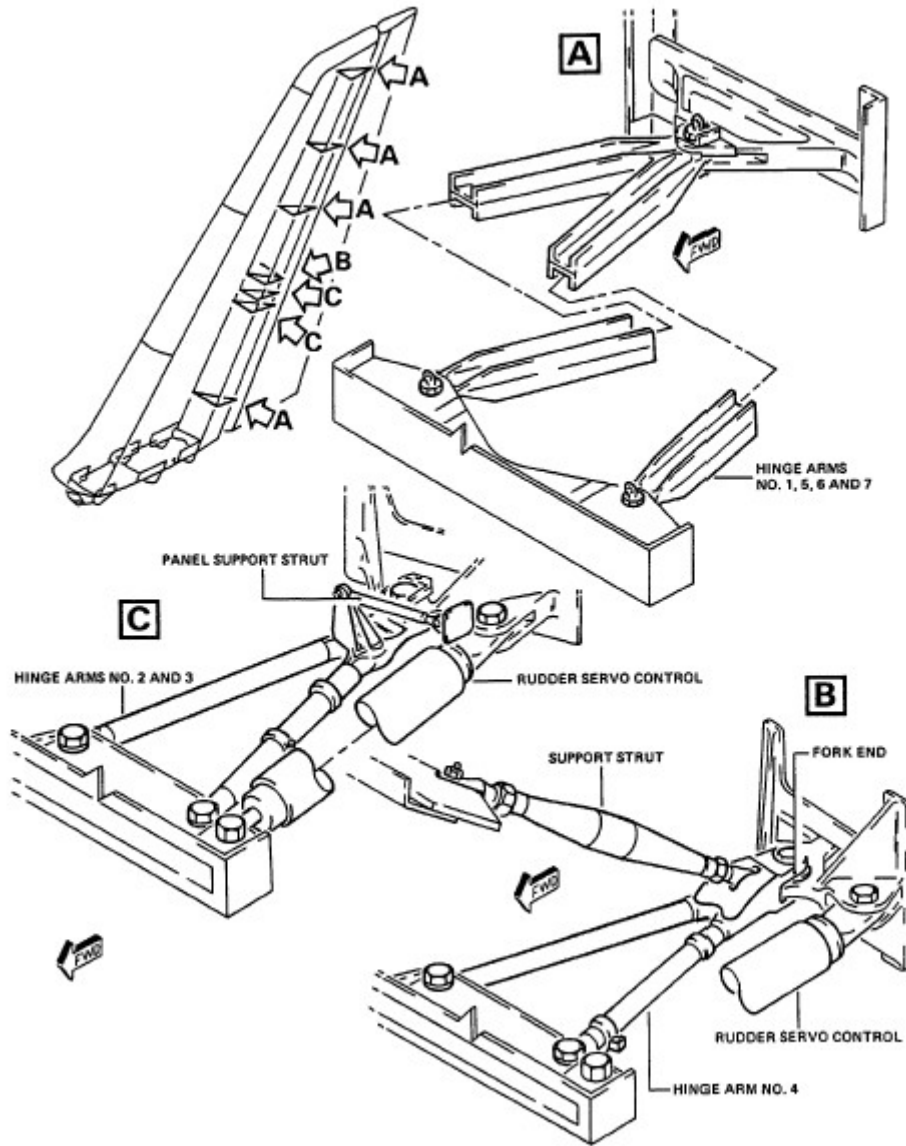
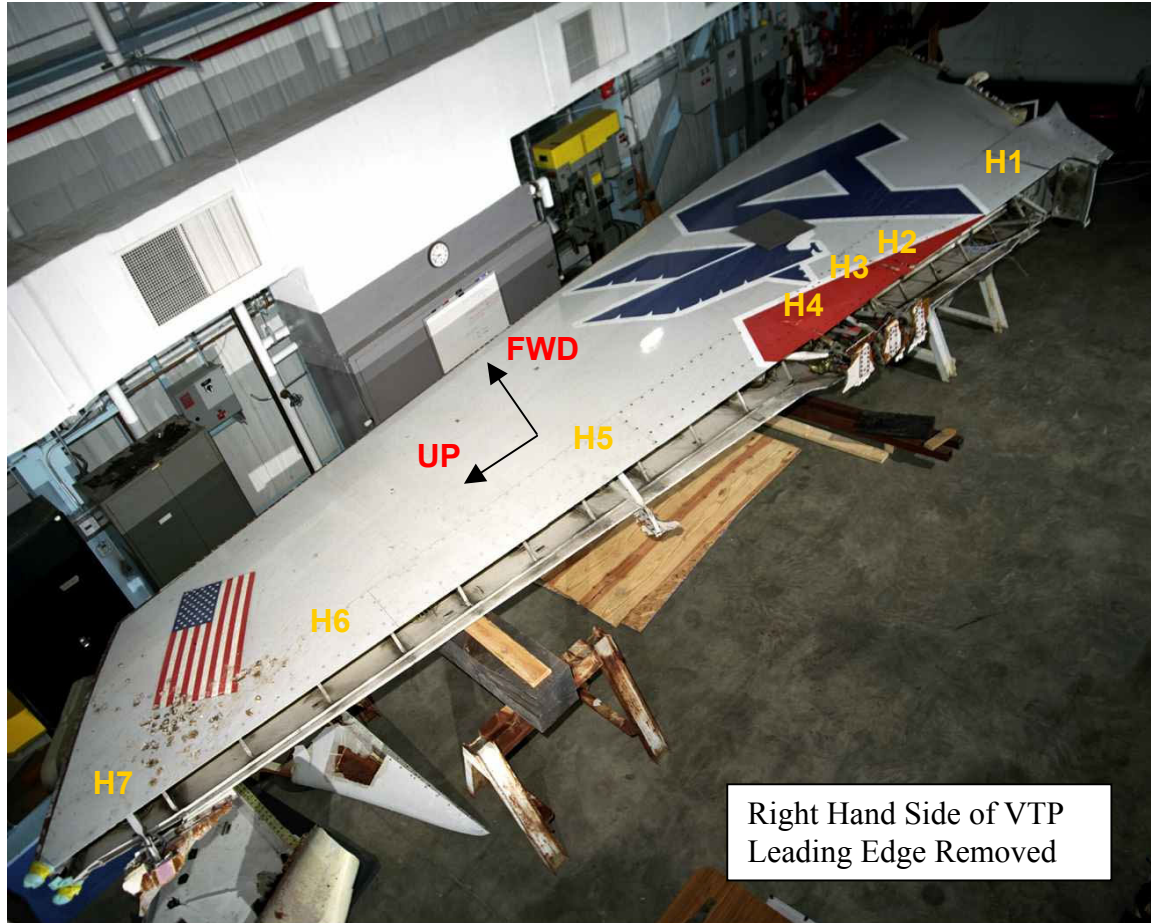


FIGURE 46

Overview of AA587 VTP



American Airlines Flight 587 Investigation
Vertical Fin
Over view of right skin and rear spar

FIGURE 47

VTP SKIN PANEL STRINGER LOCATIONS

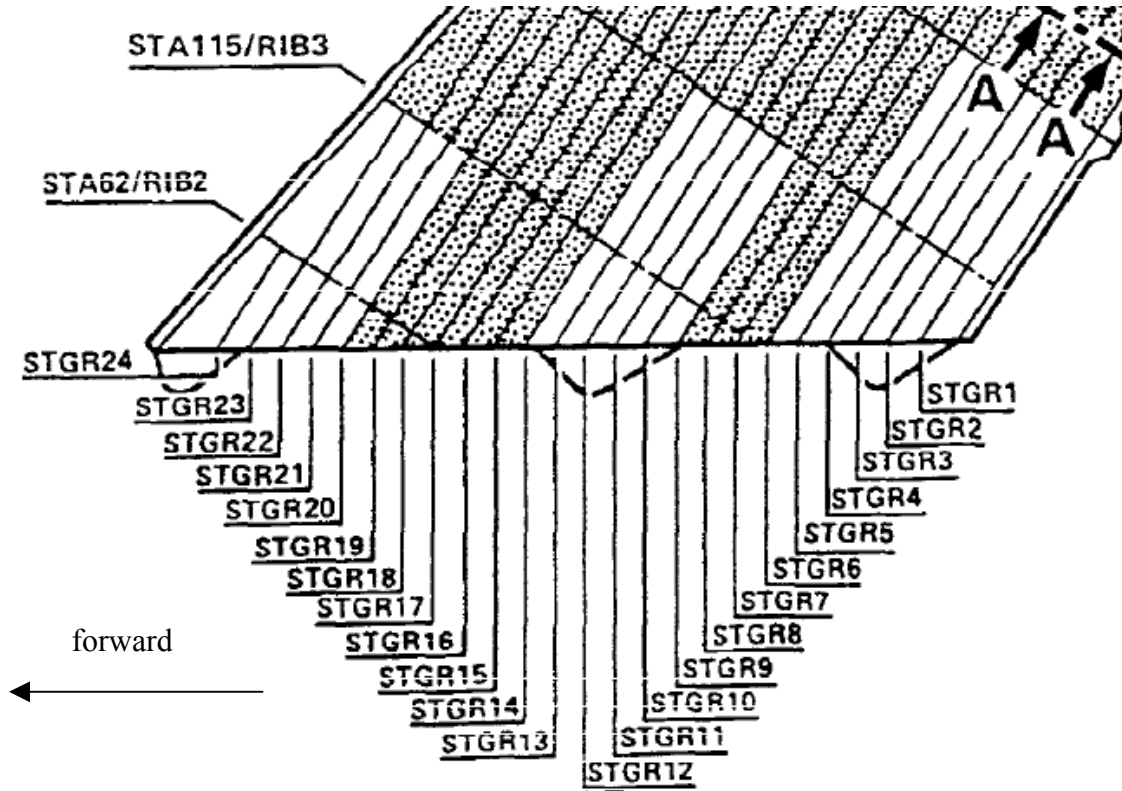


FIGURE 48

VTP RIB LOACTIONS

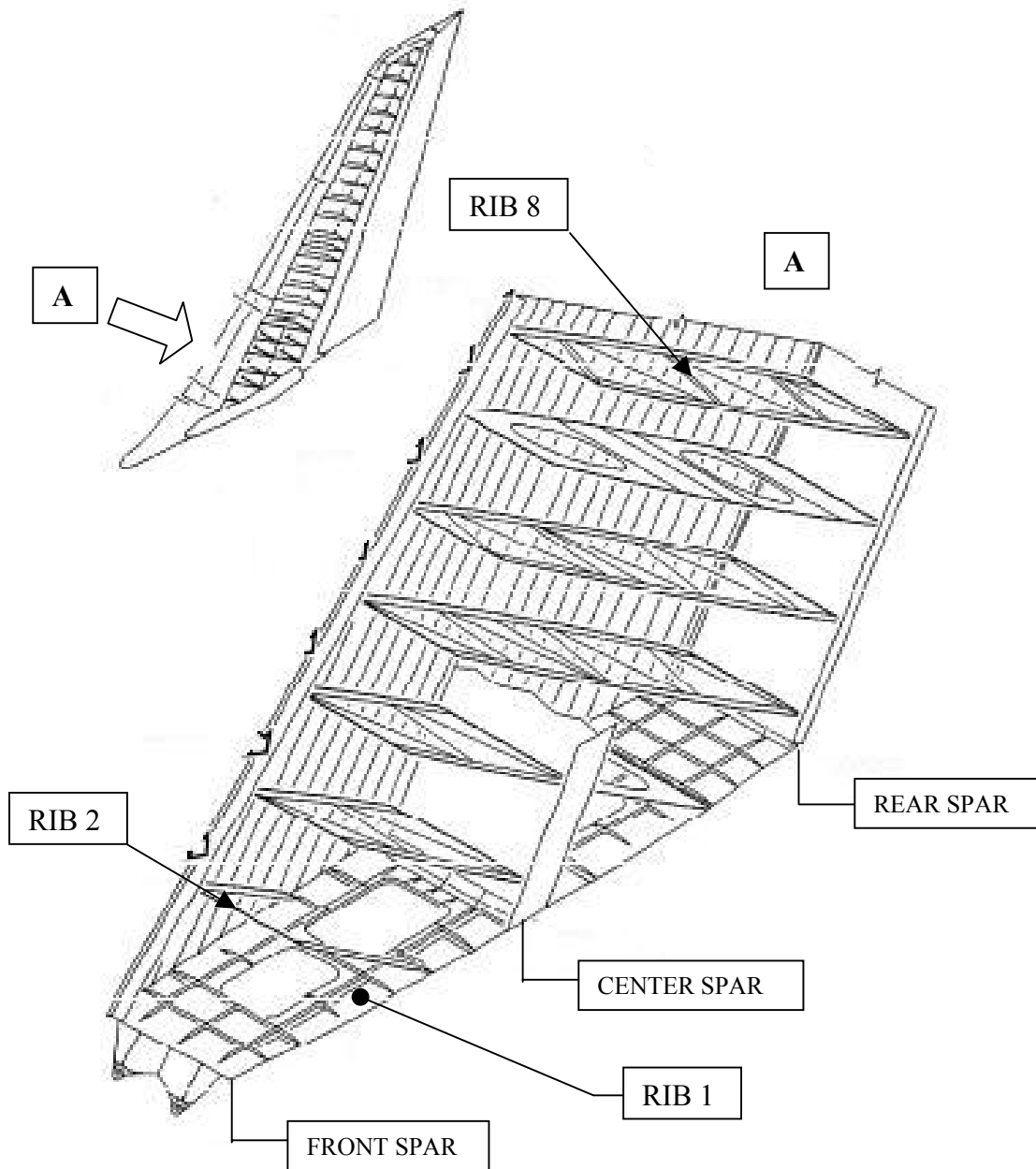


FIGURE 49

View of right aft main attach fitting
(see figures 43, 44 & 49)

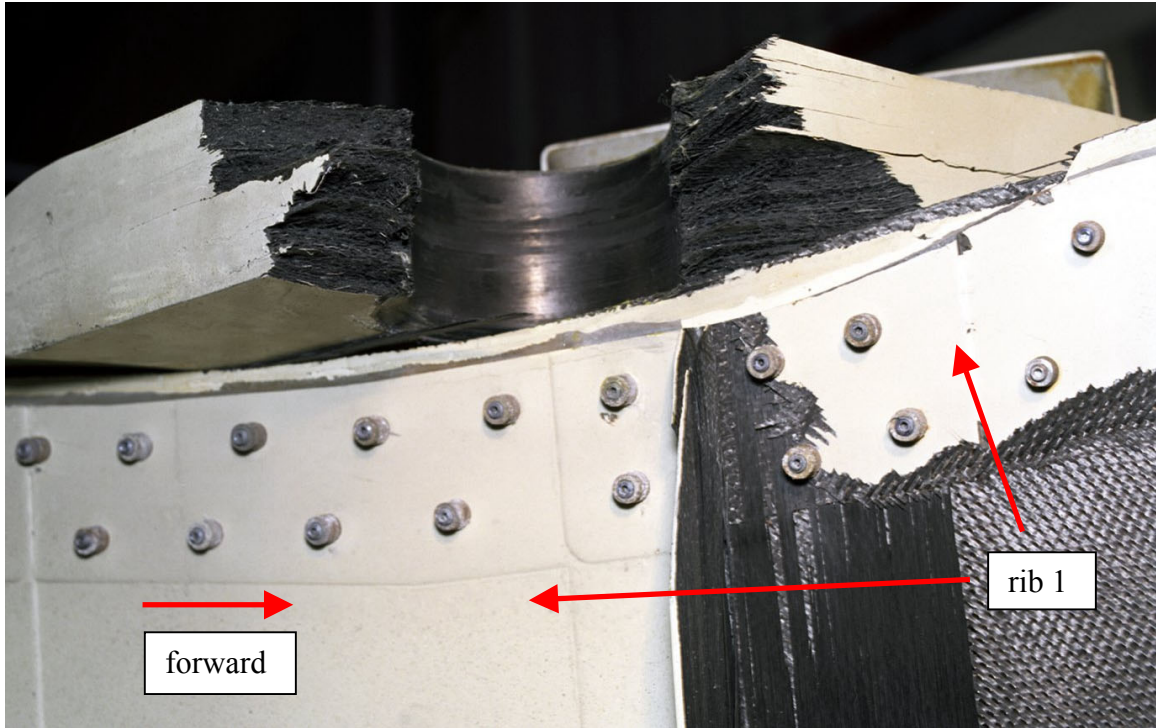


FIGURE 50

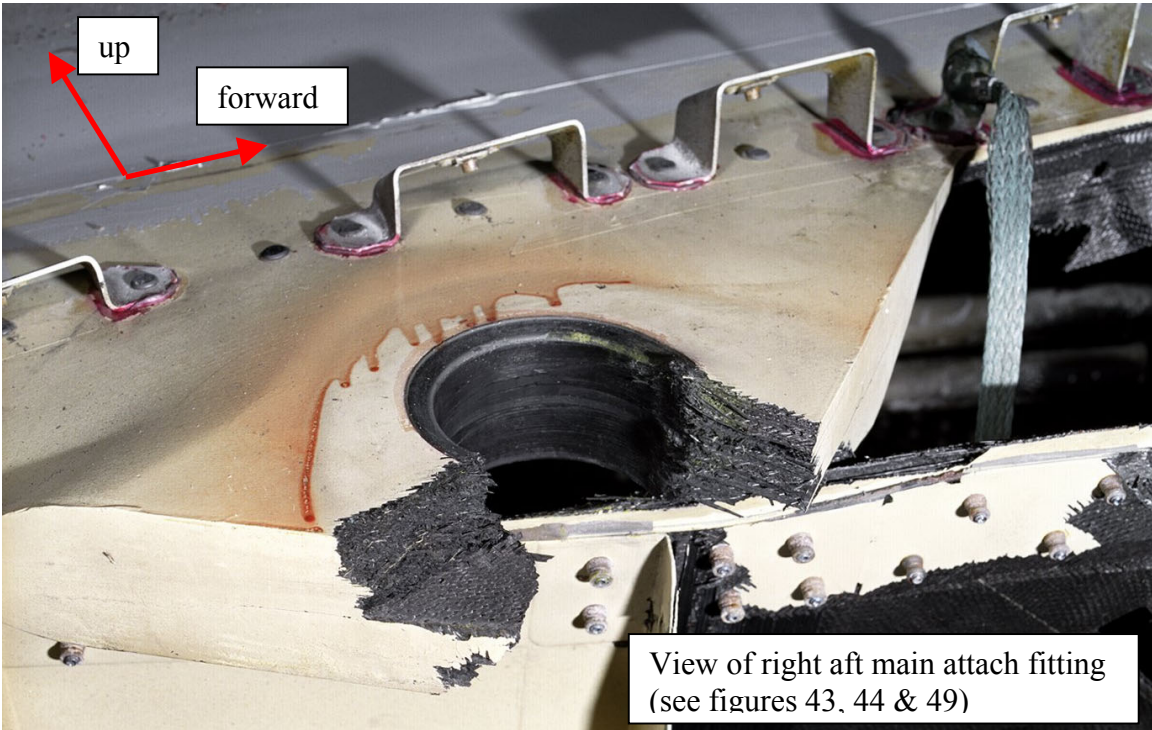


FIGURE 51

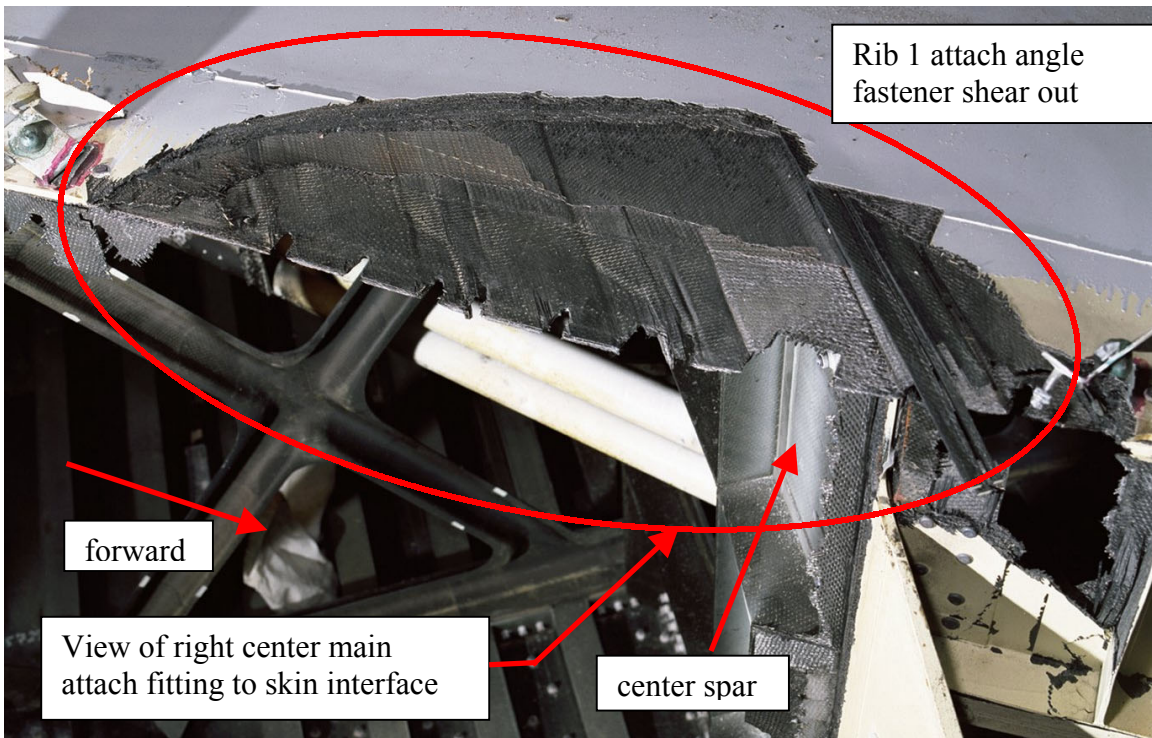


FIGURE 52

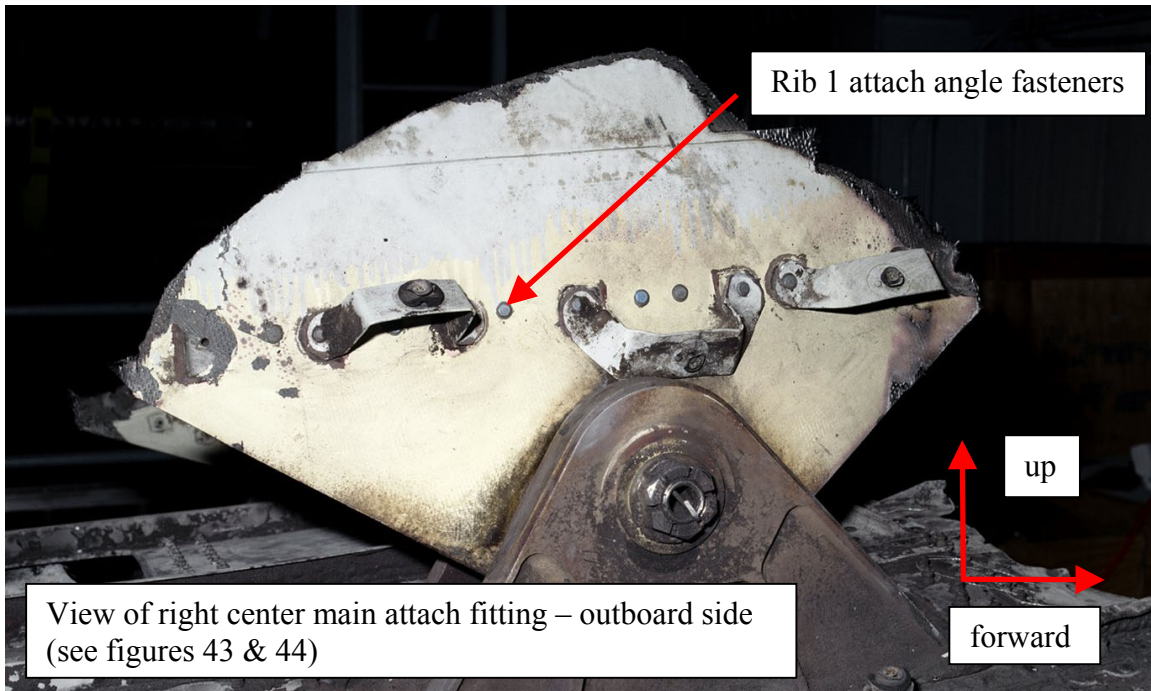


FIGURE 53

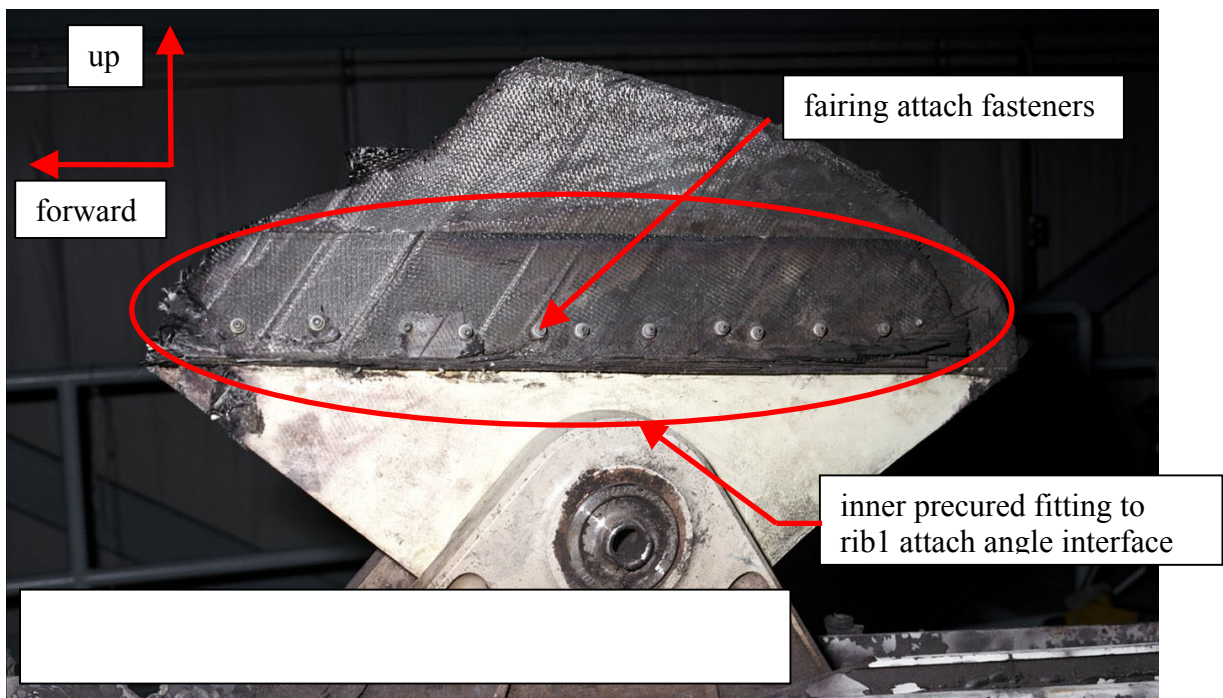


FIGURE 54

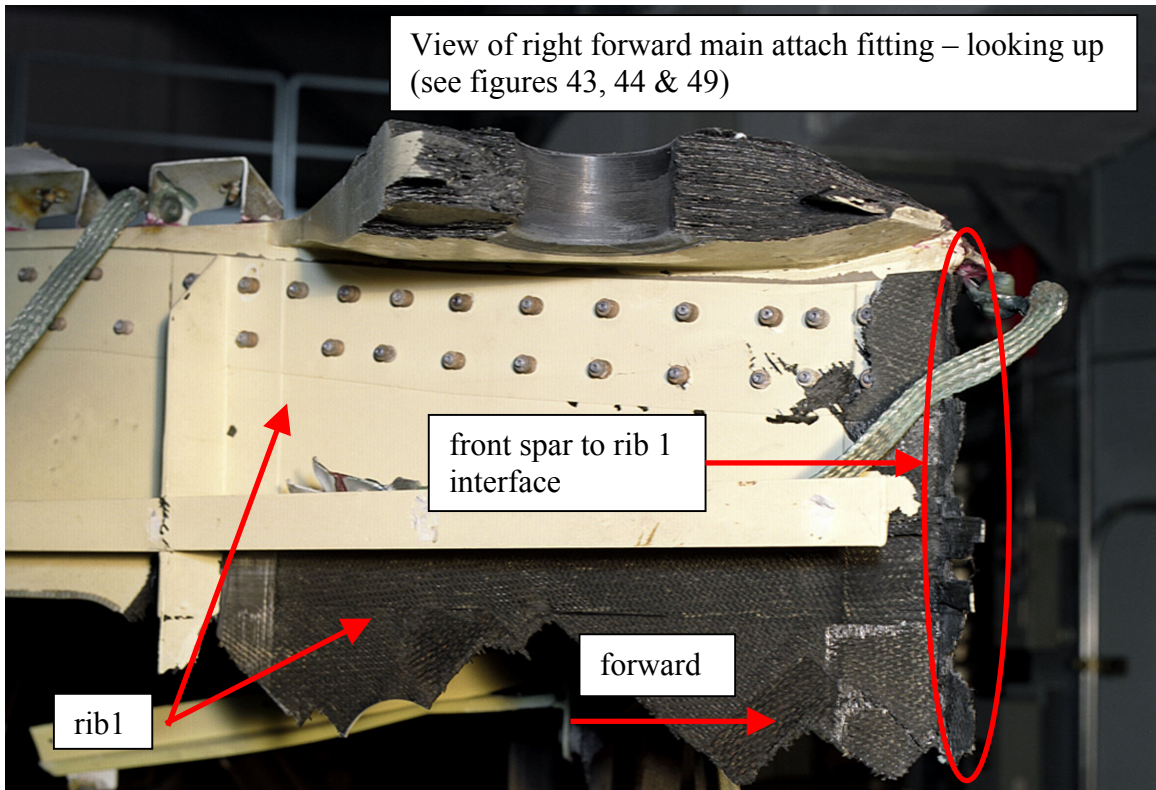


FIGURE 55

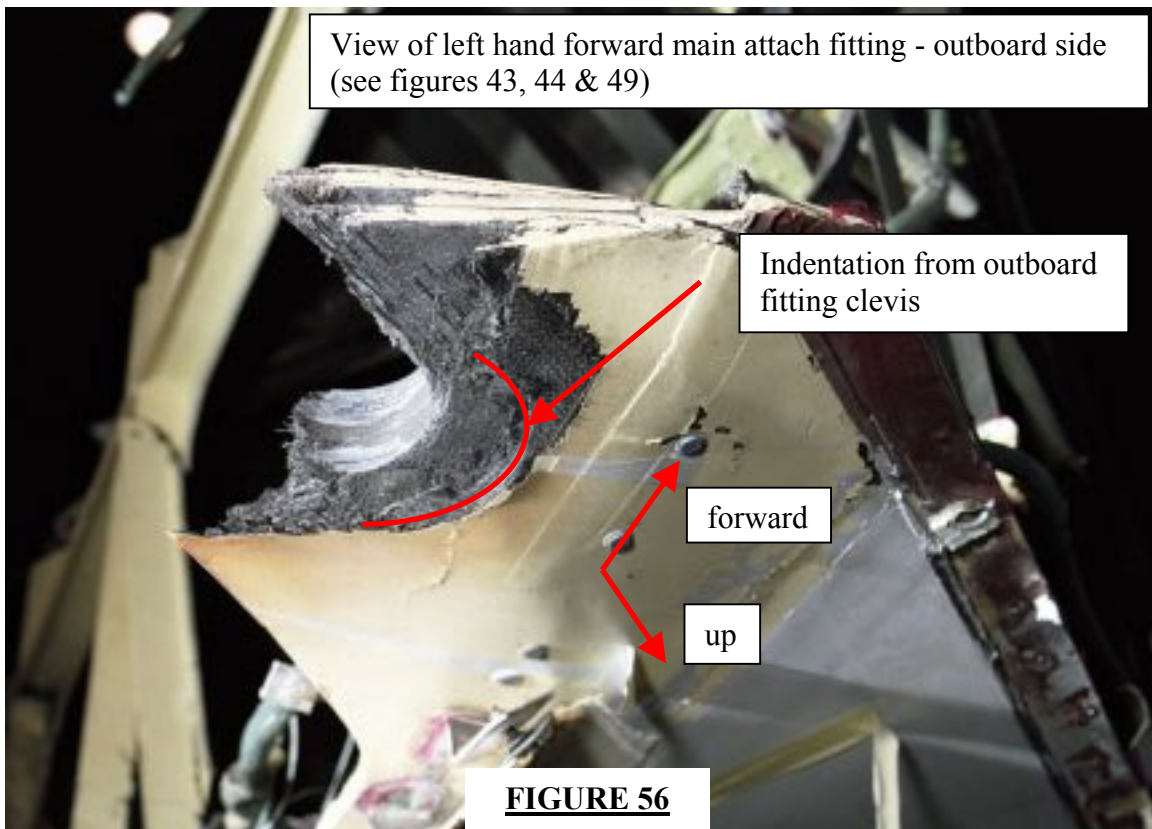


FIGURE 56

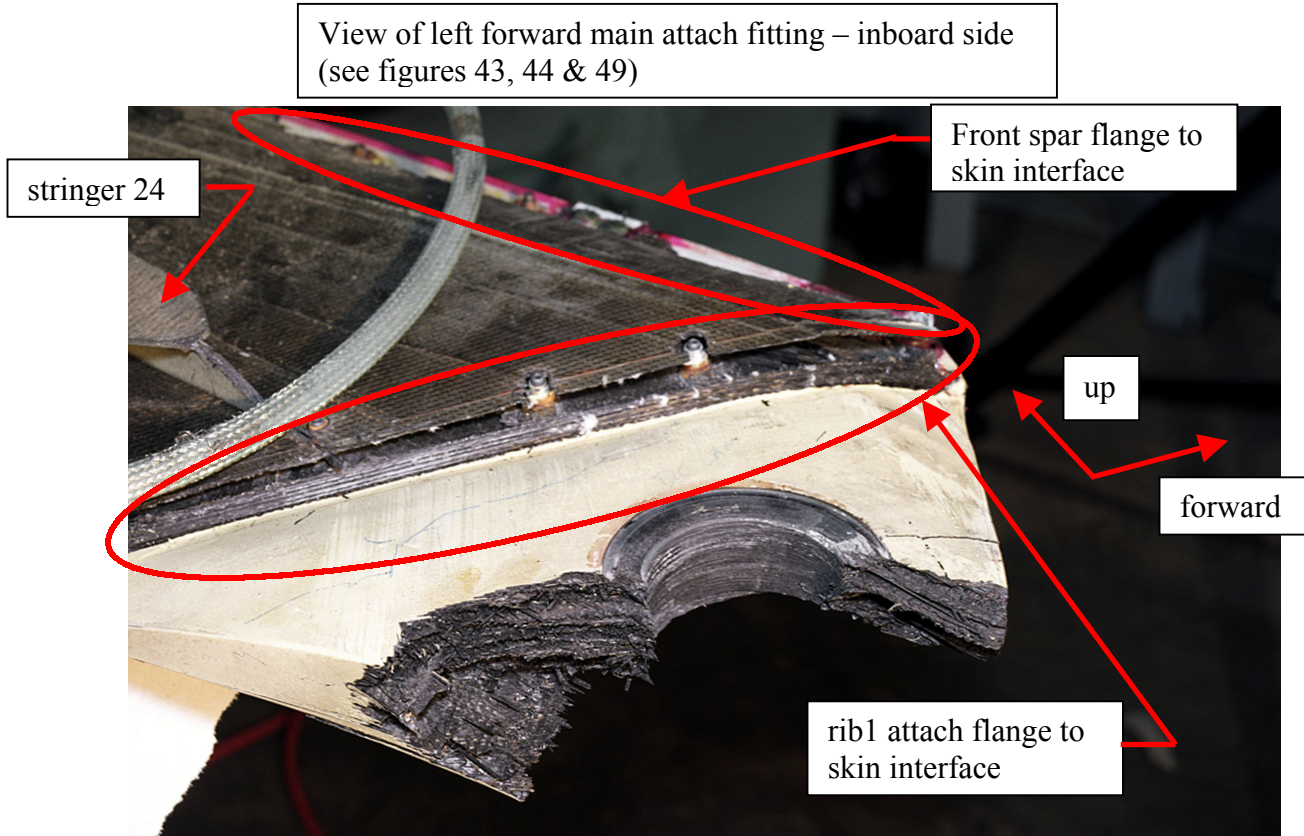


FIGURE 57

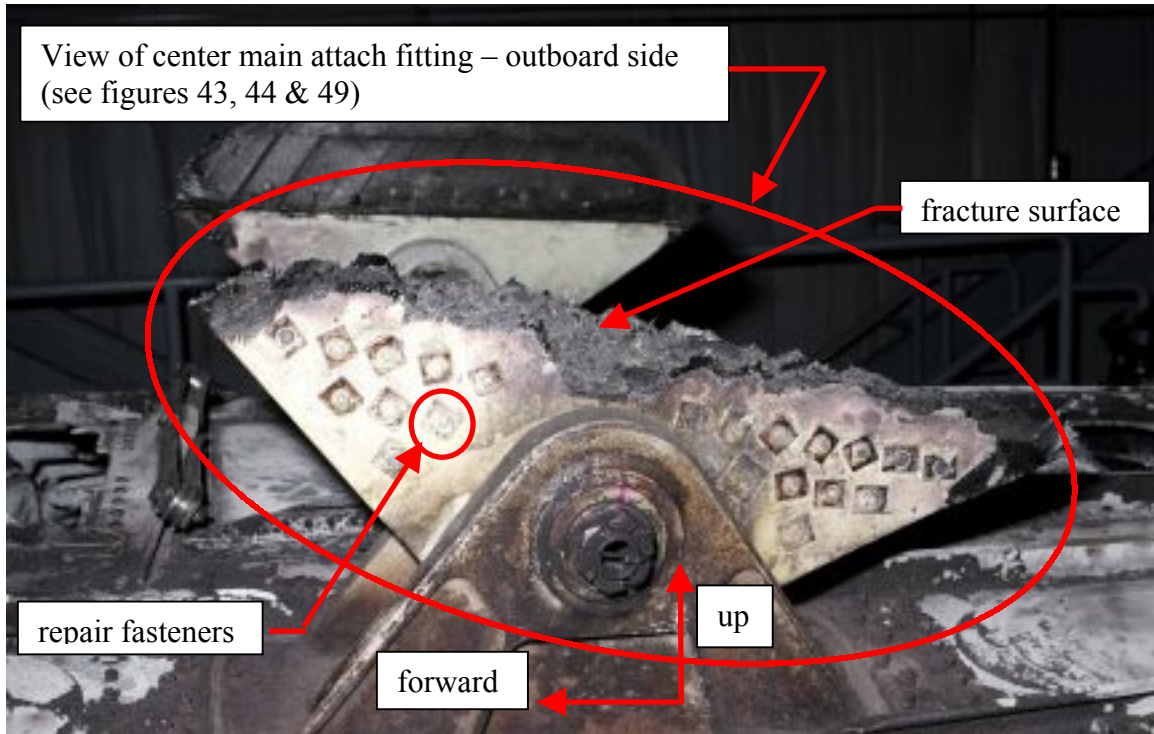


FIGURE 58

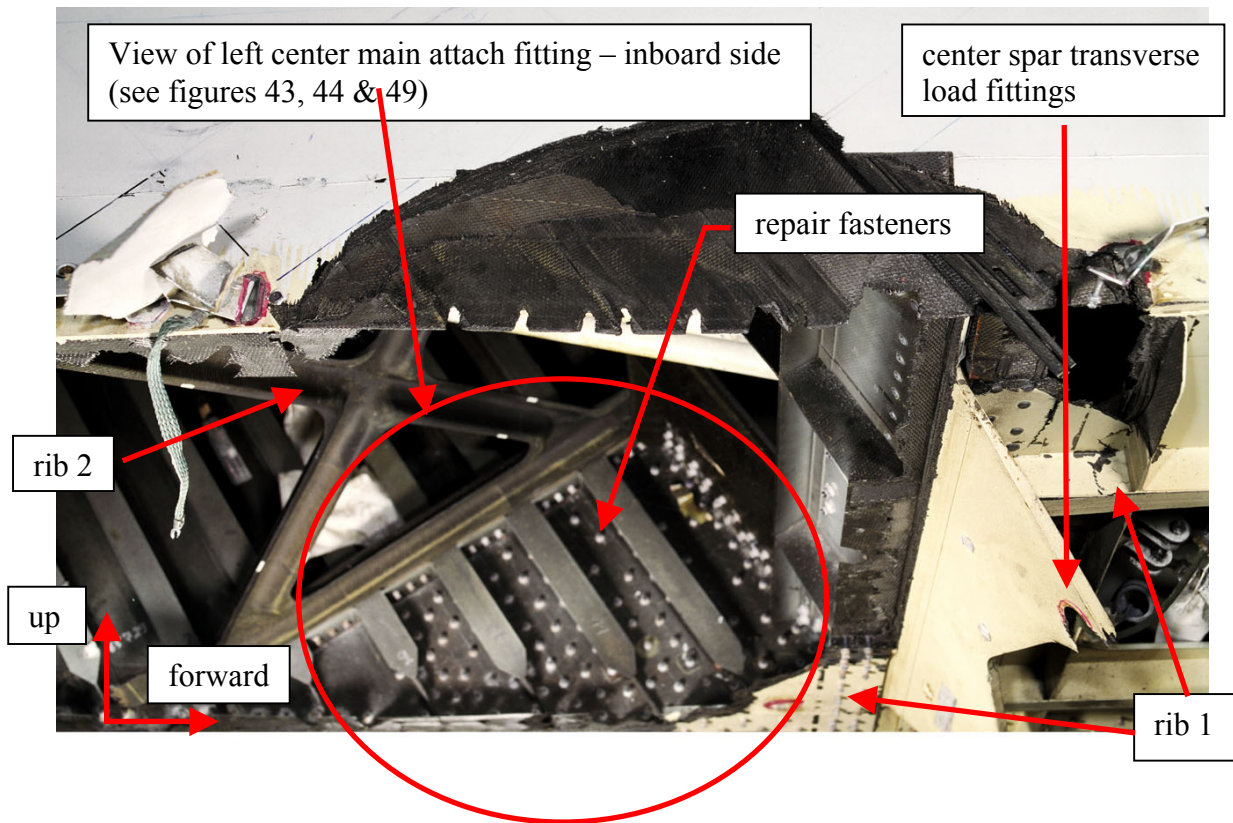


FIGURE 59

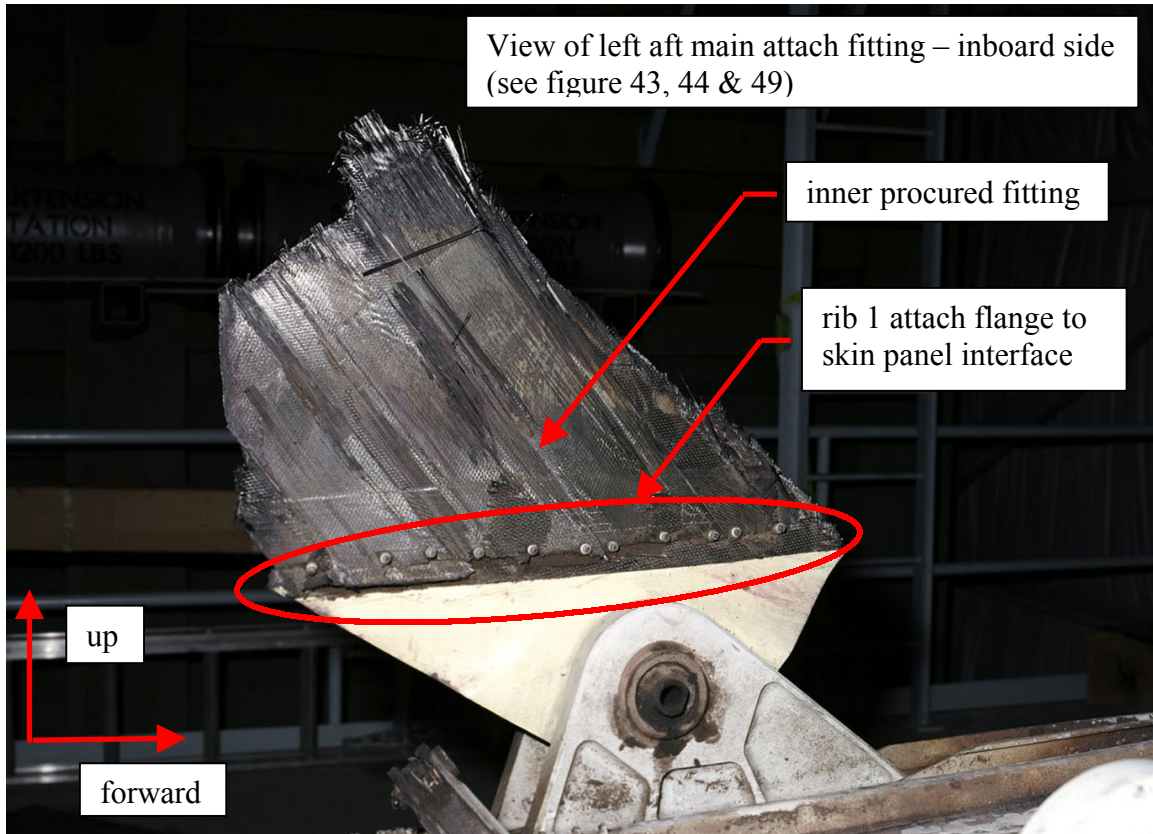


FIGURE 60

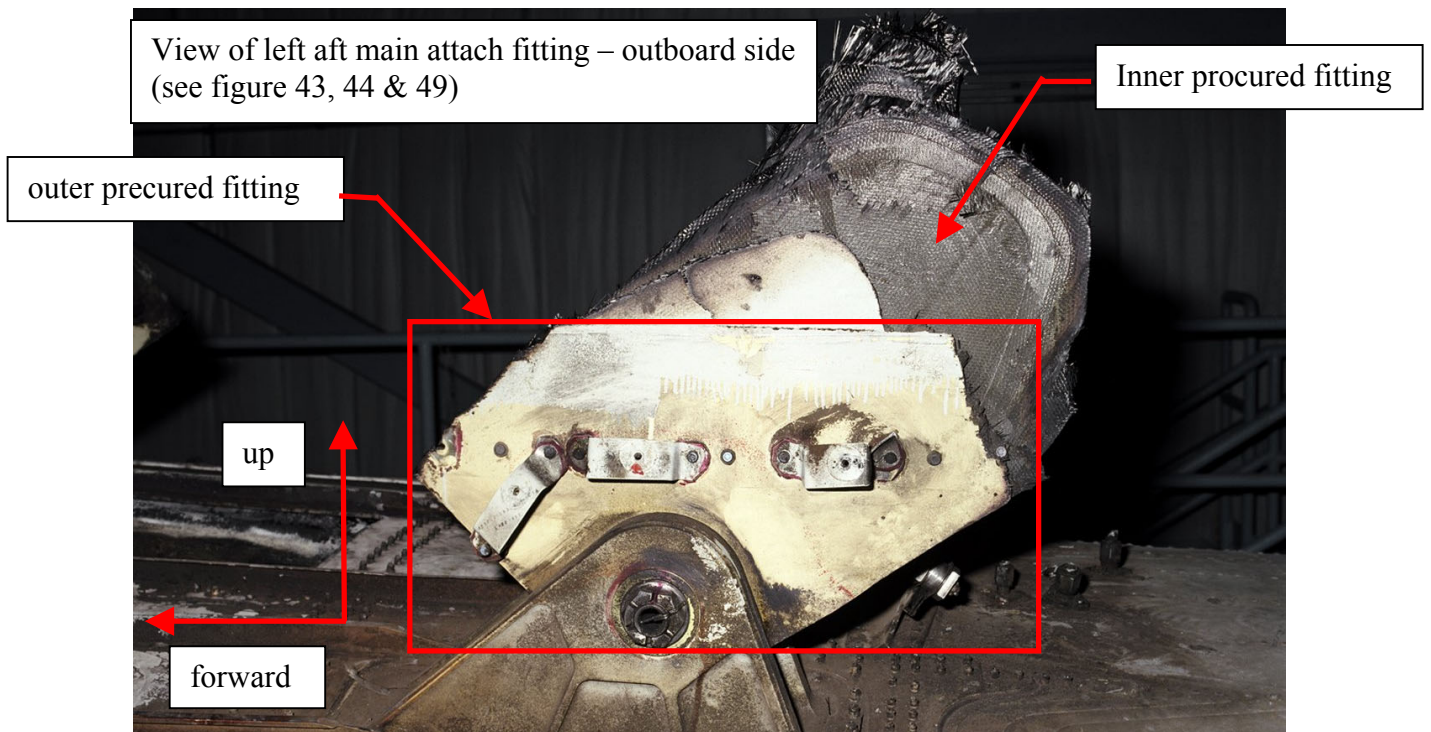


FIGURE 61

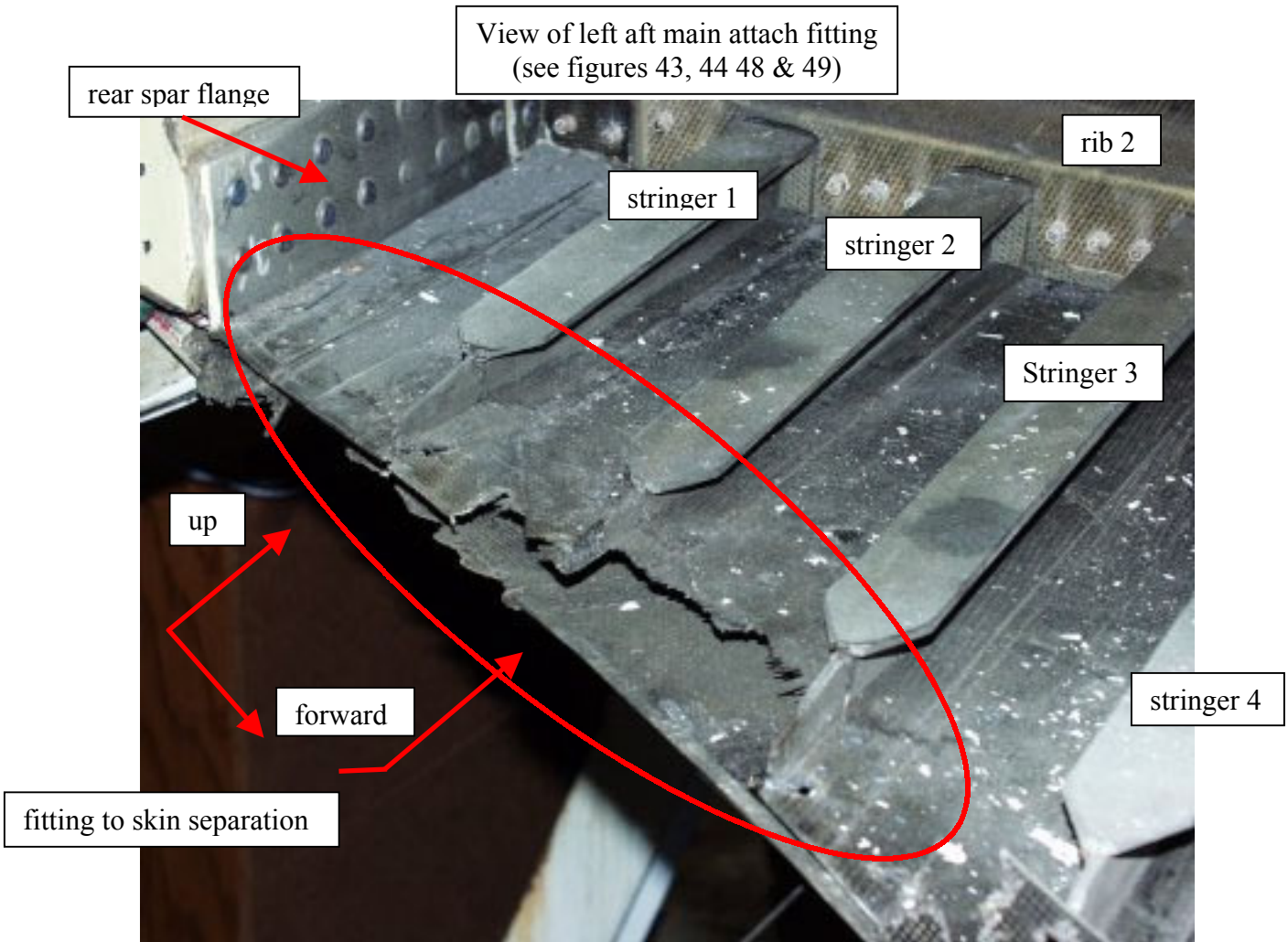


FIGURE 62

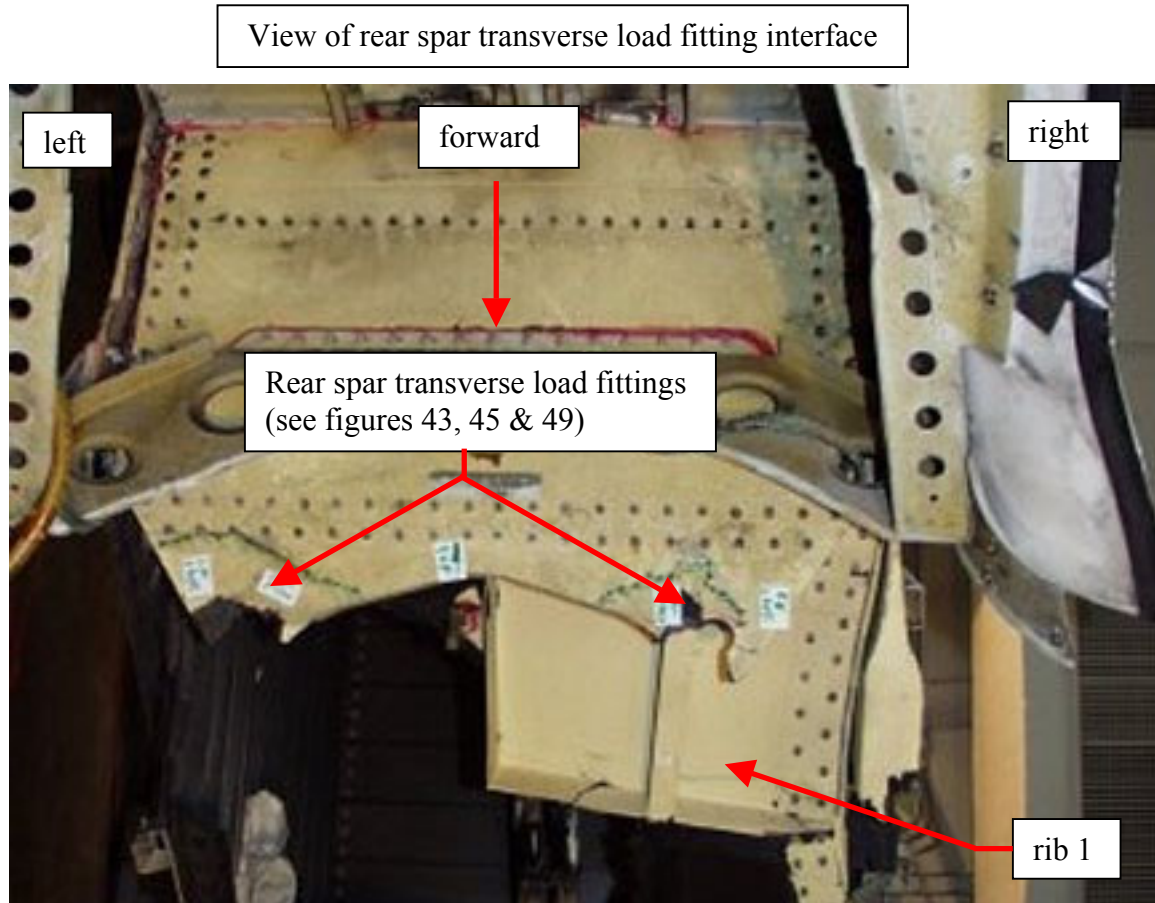


FIGURE 63

View of mid spar transverse load fitting interface

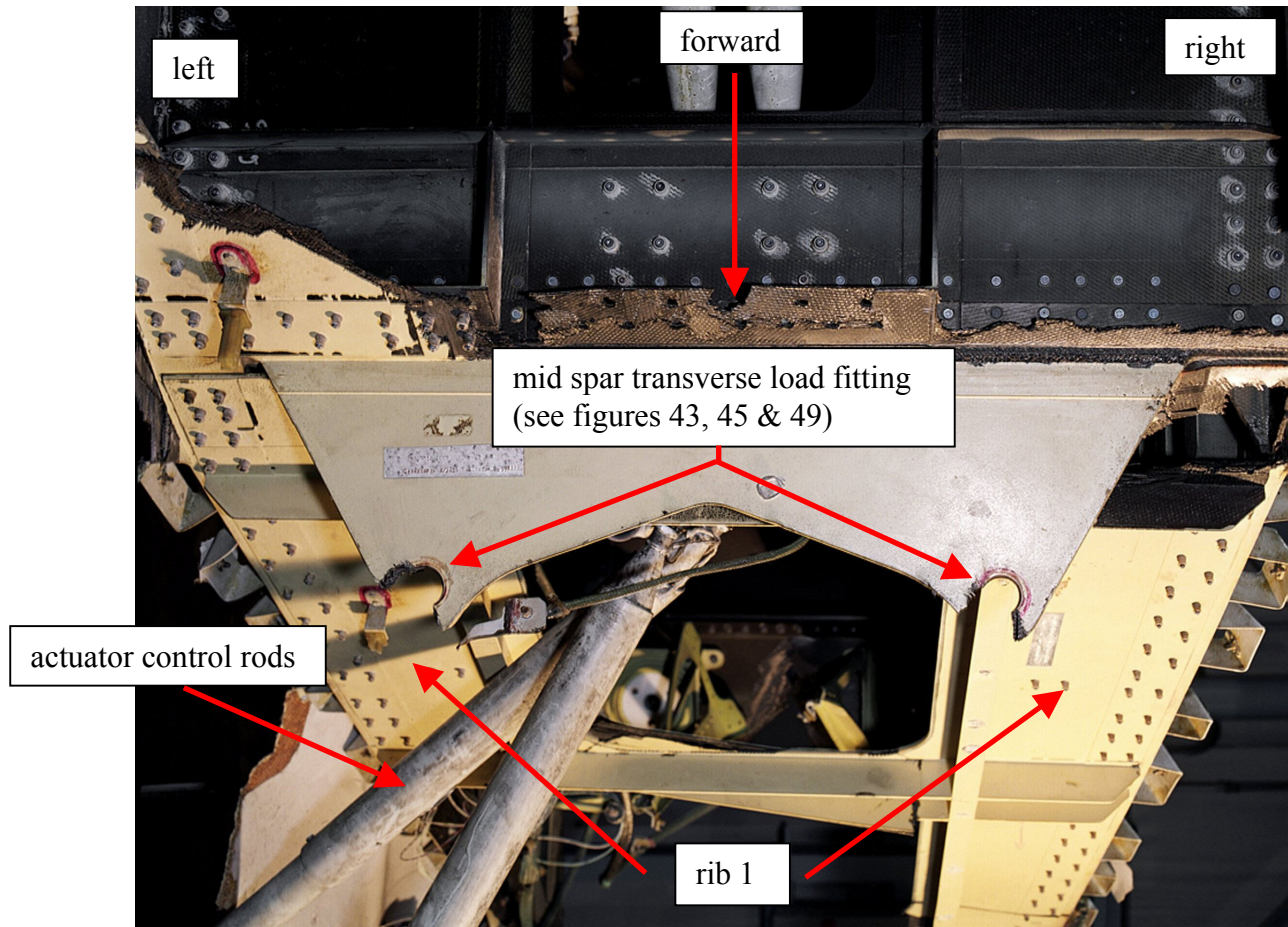


FIGURE 64

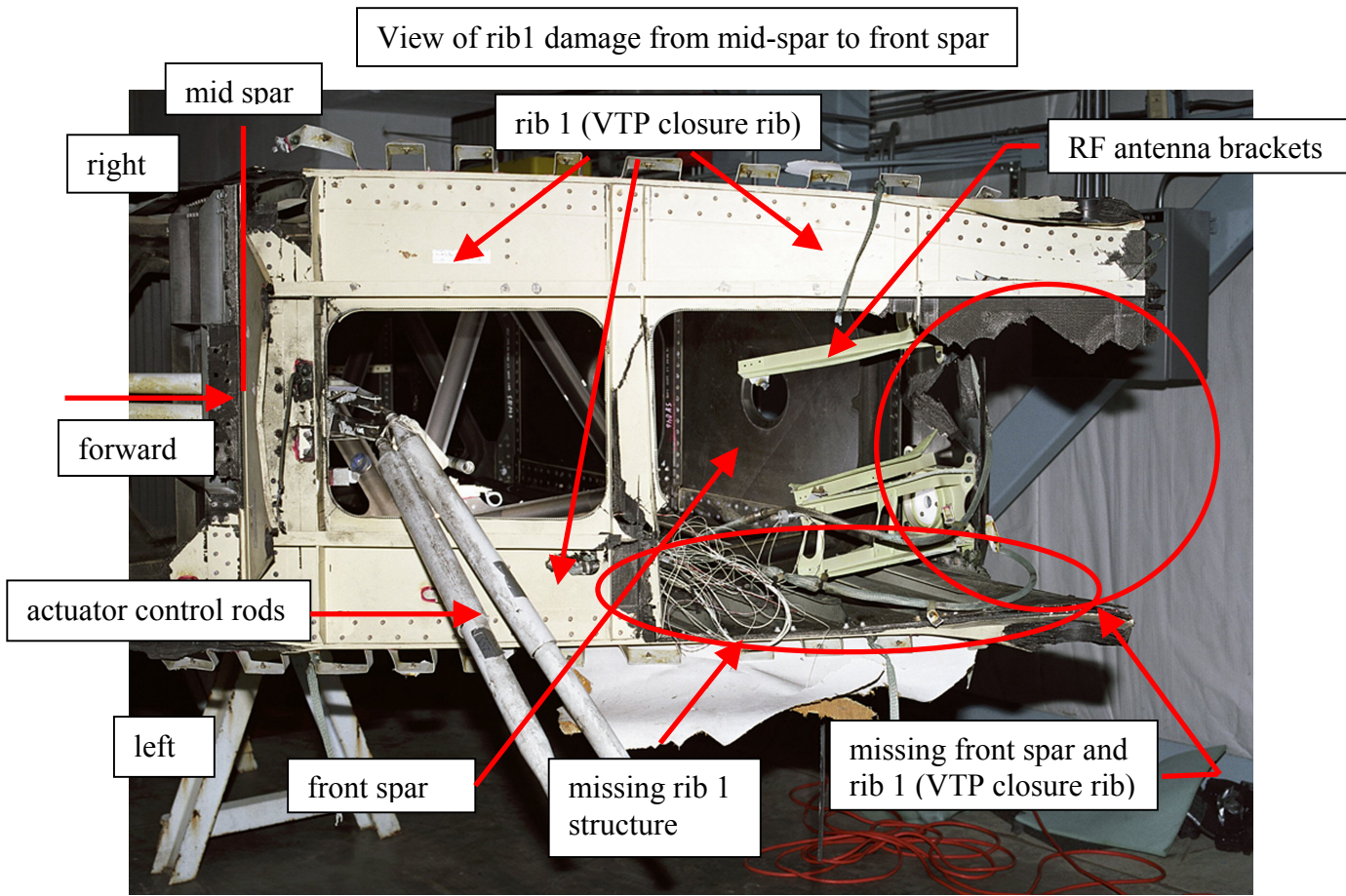


FIGURE 65

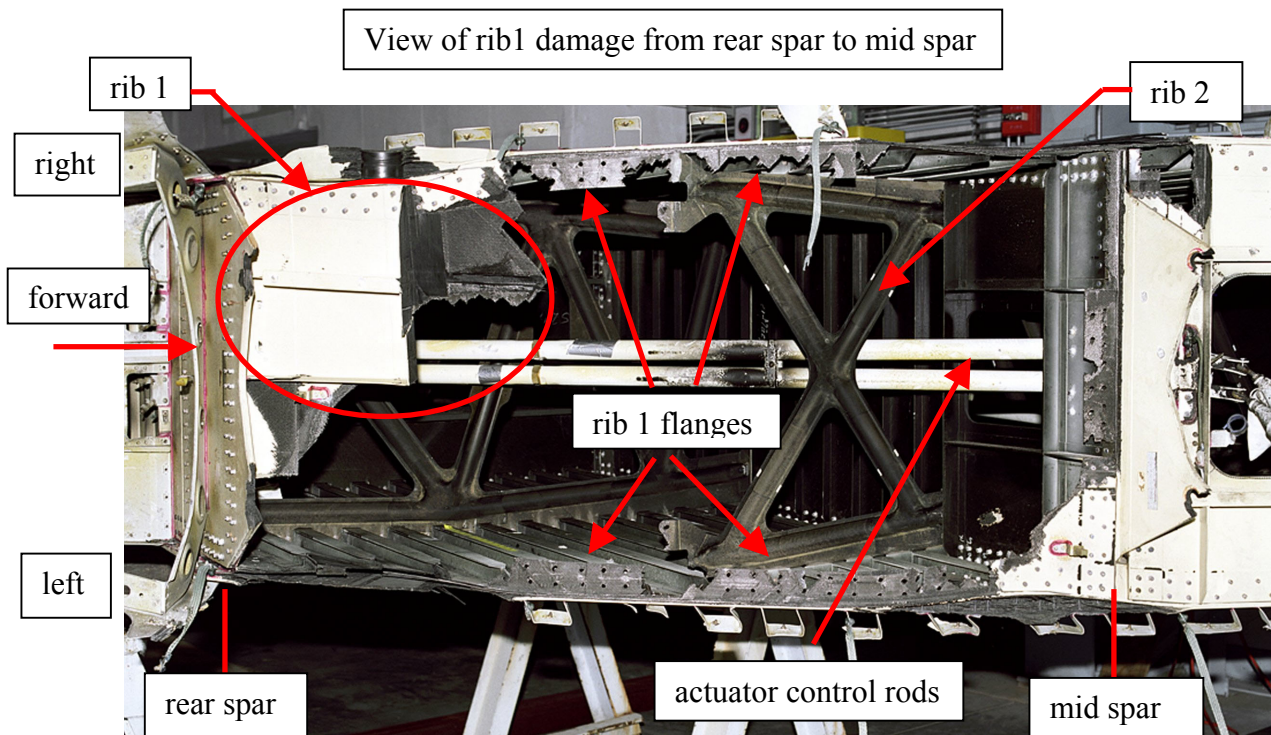


FIGURE 66

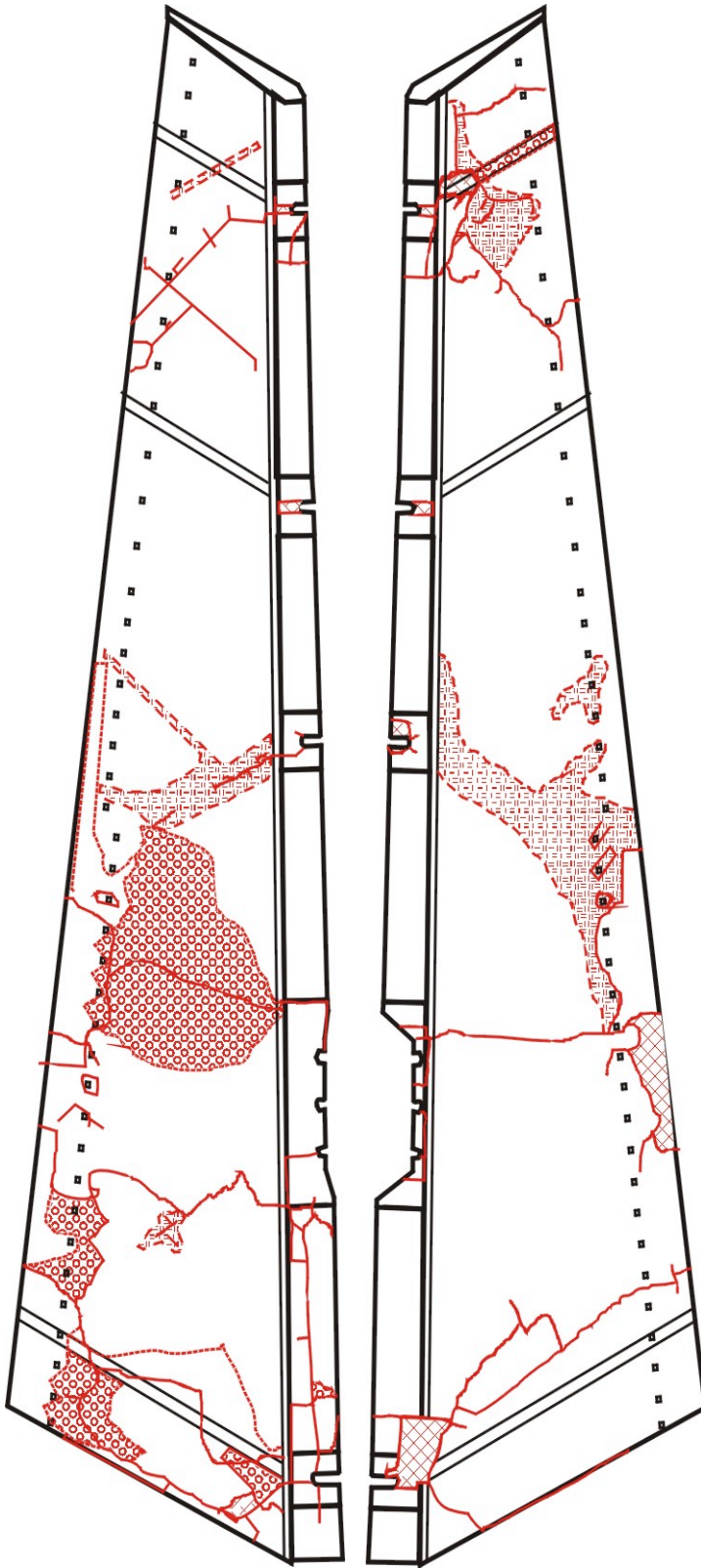


right hand rudder skin panel

left hand rudder skin panel

FIGURE 67

- facesheet and honeycomb fracture
- - - facesheet fracture
- - - facesheet/honeycomb disbond
- ▣ missing facesheet and honeycomb
- ⊗ missing facesheet



right hand rudder skin panel

Left hand rudder skin panel

FIGURE 68

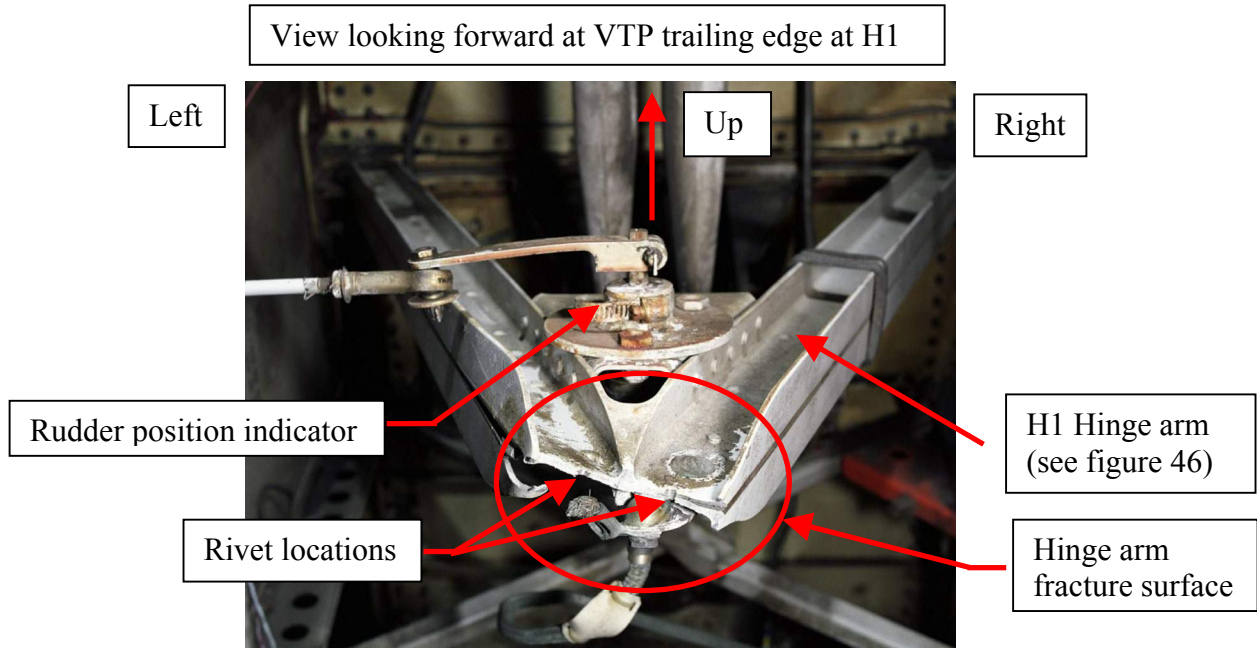


FIGURE 69

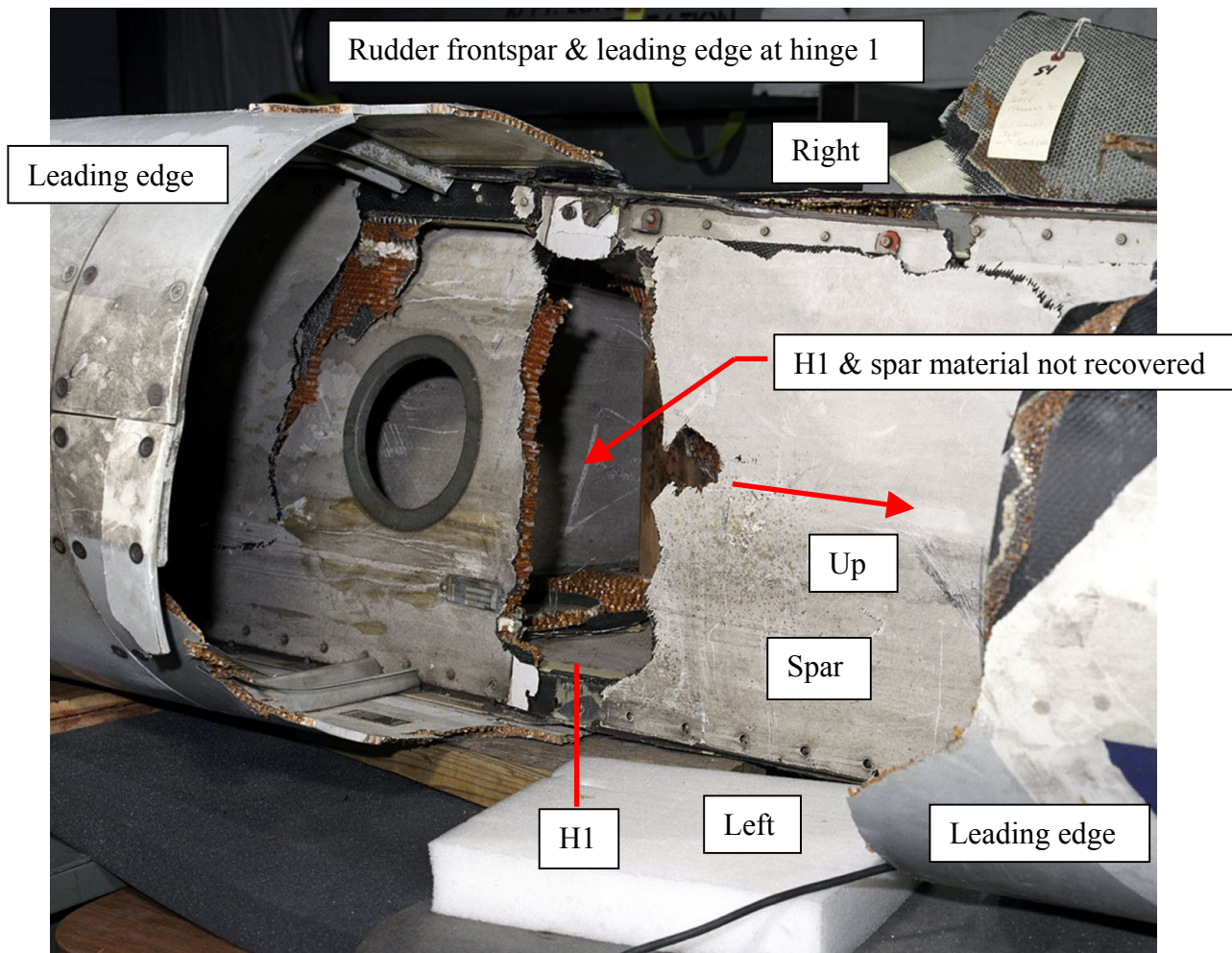
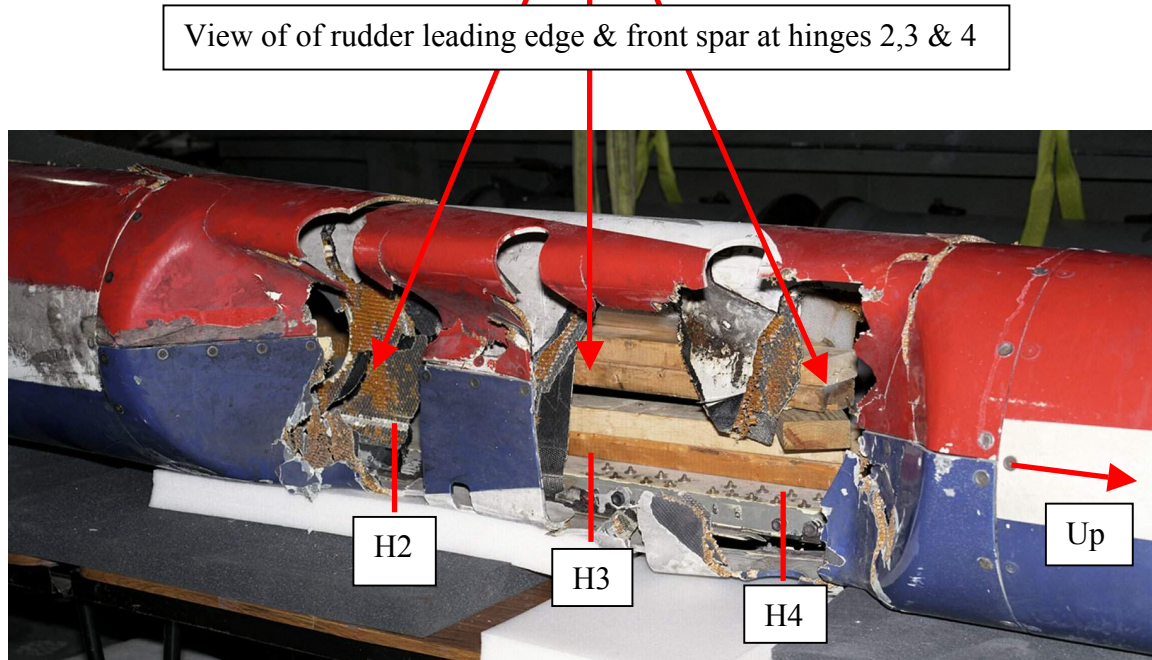
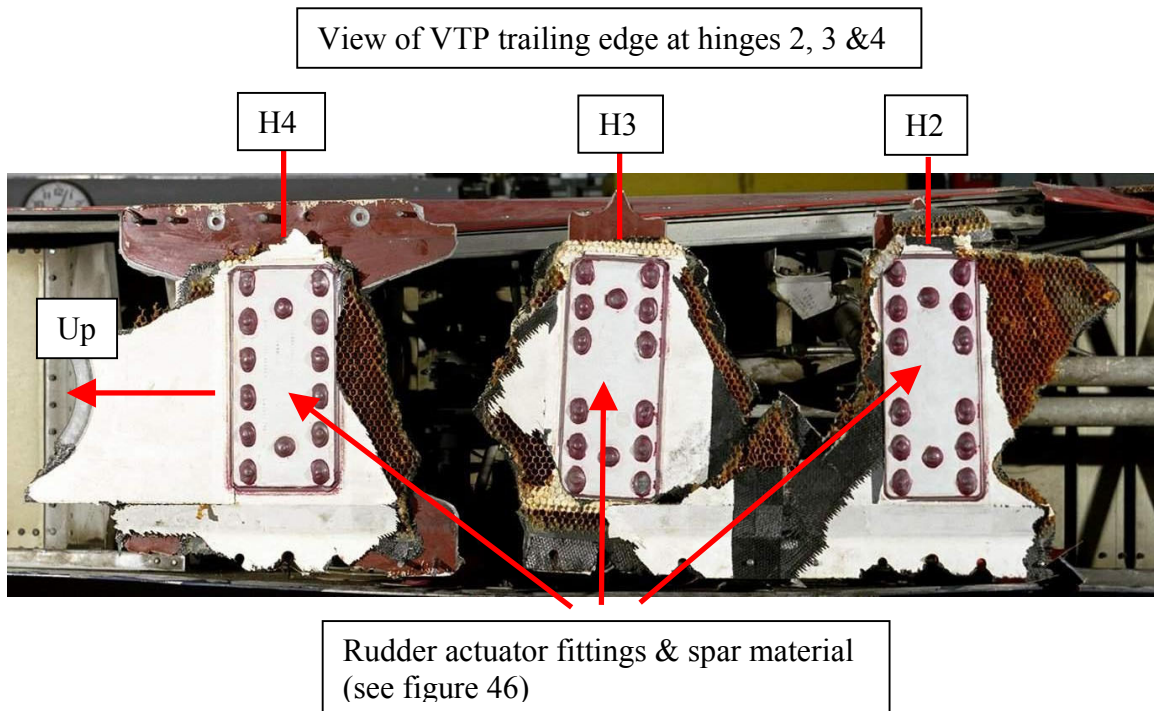
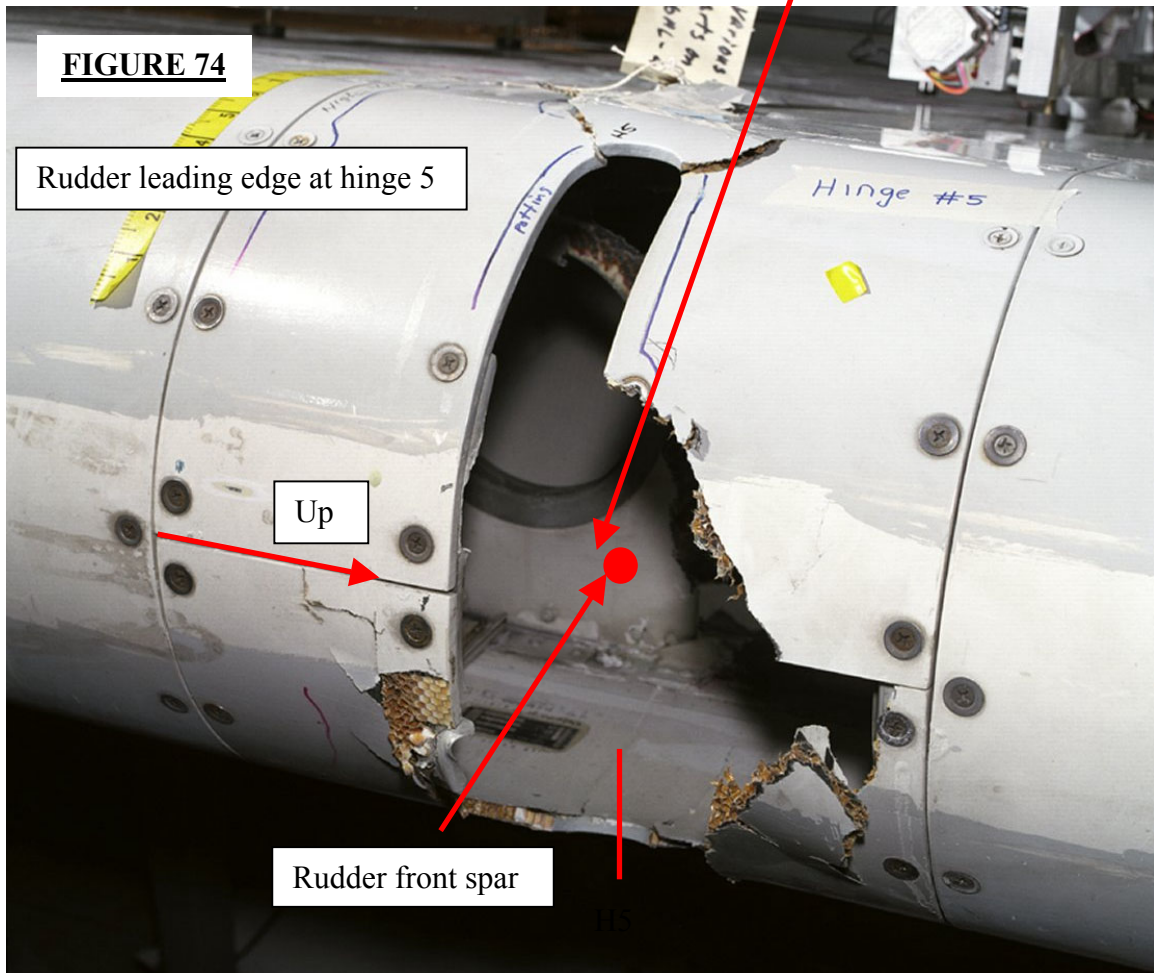
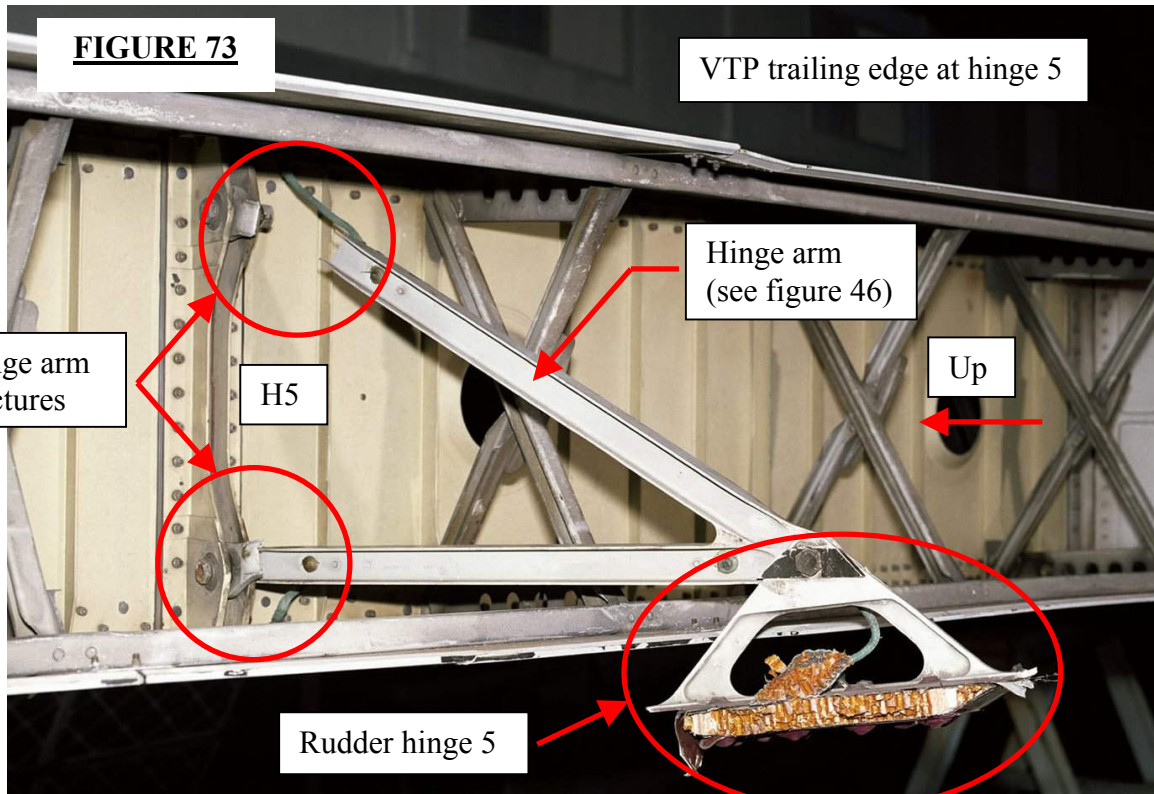


FIGURE 70



FIGURES 71 & 72



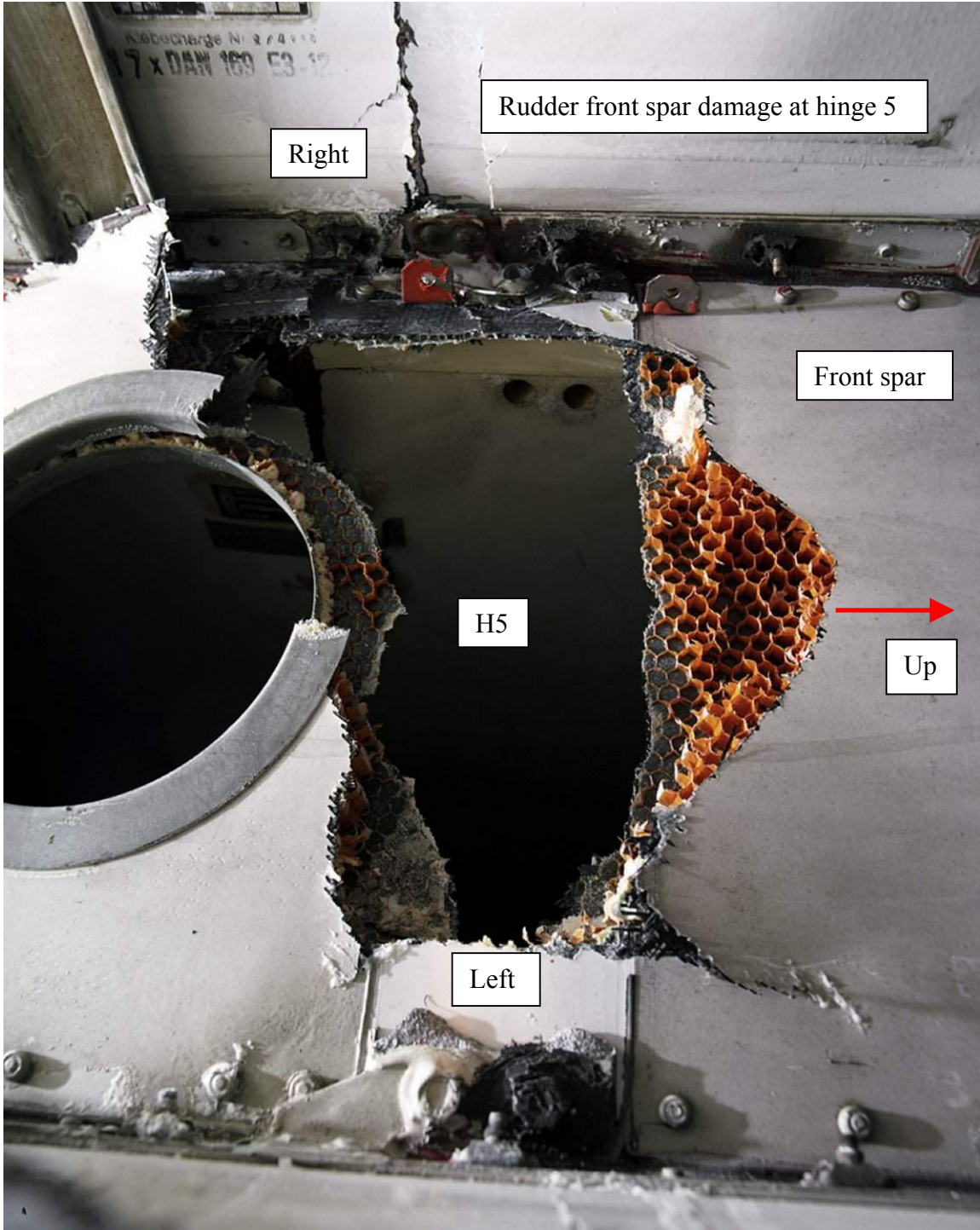


FIGURE 75

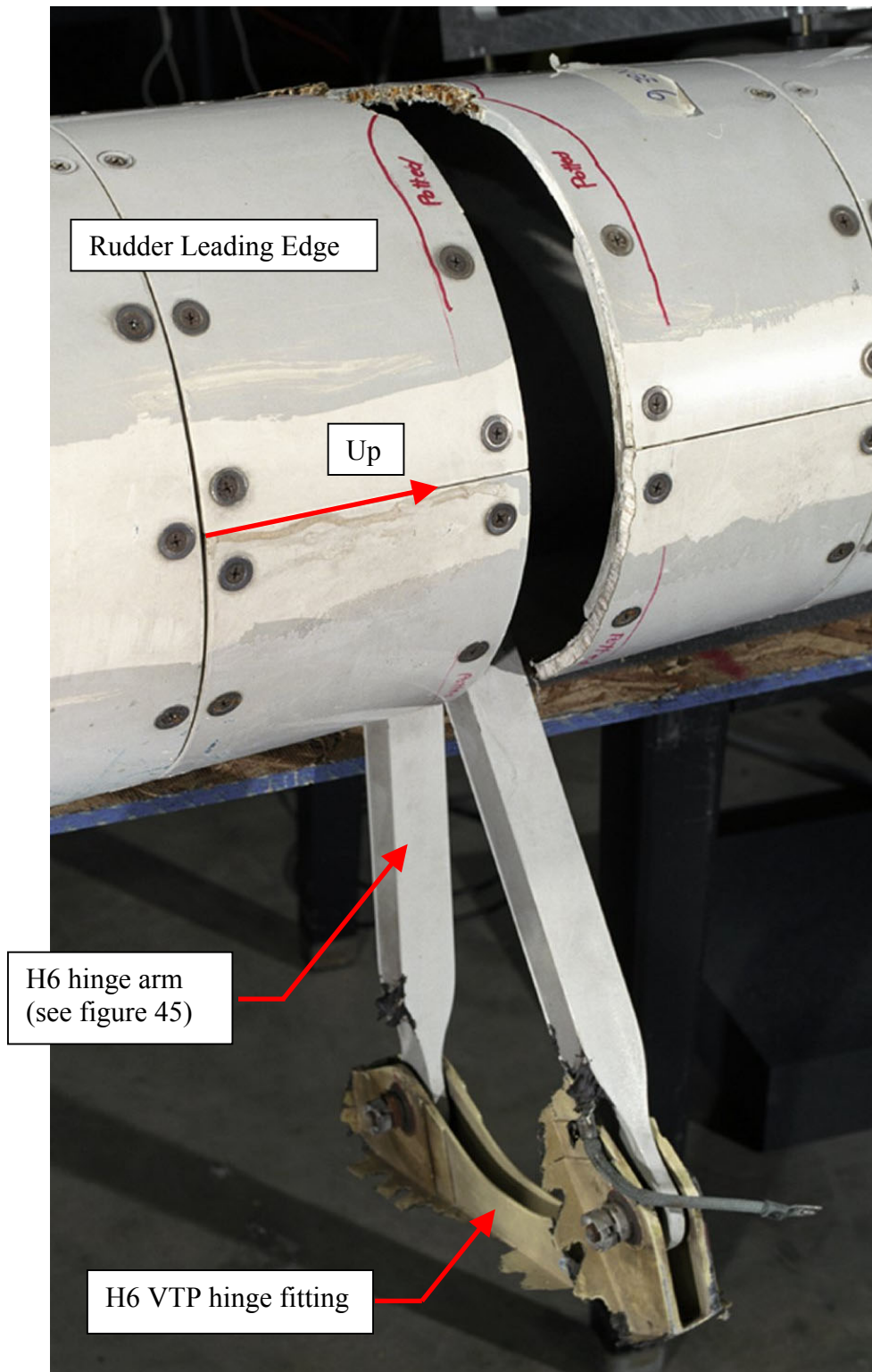
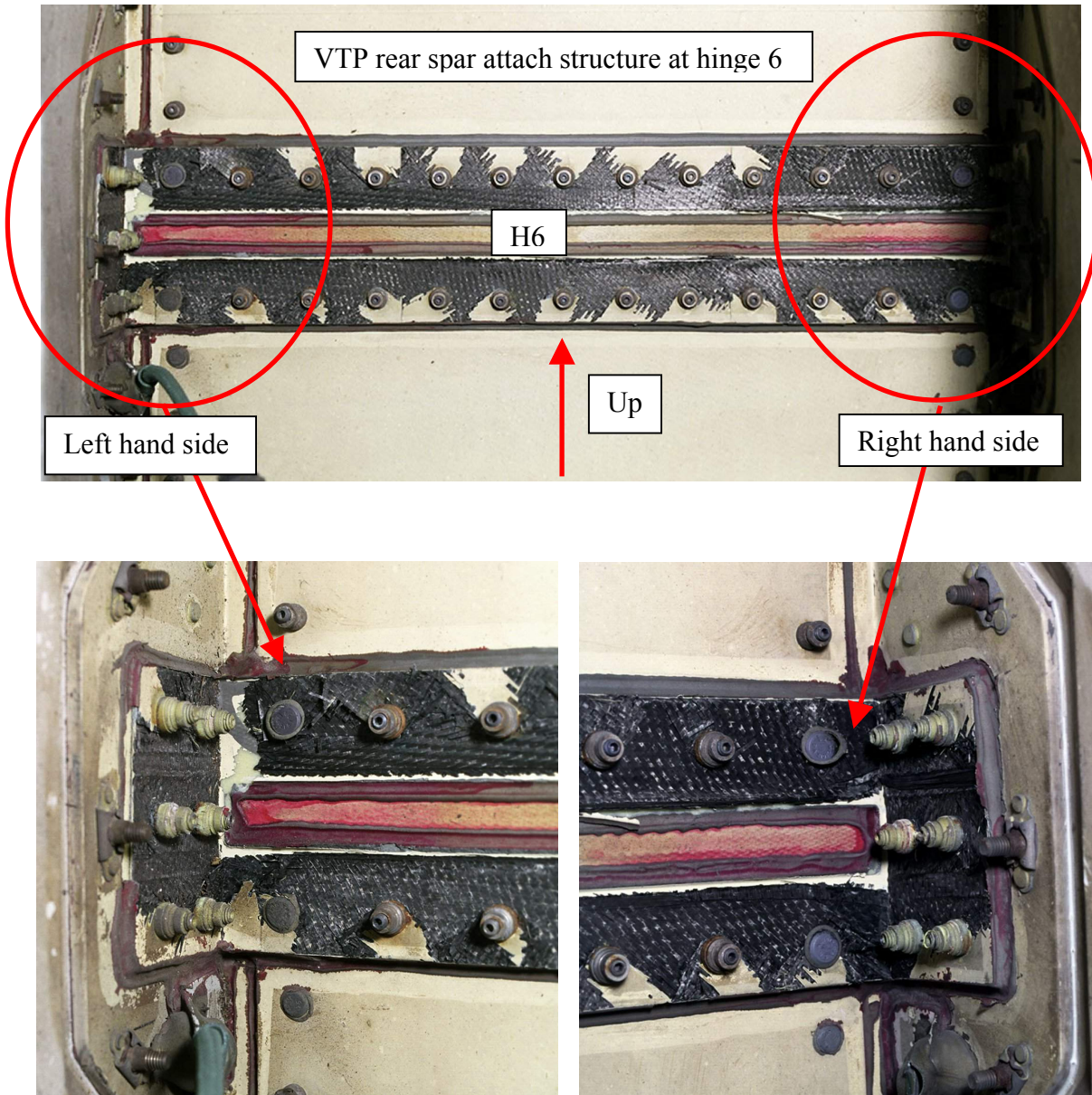


FIGURE 76



FIGURES 77, 78 & 79

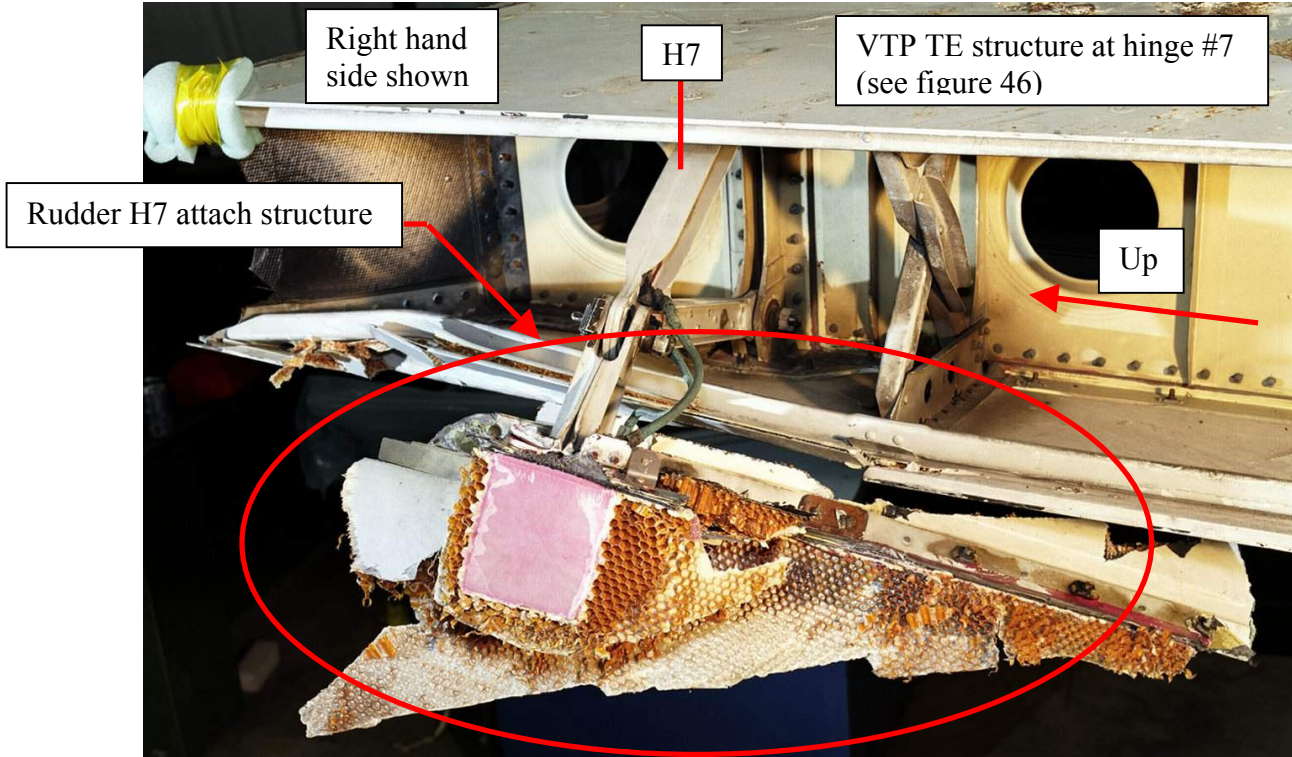


FIGURE 80

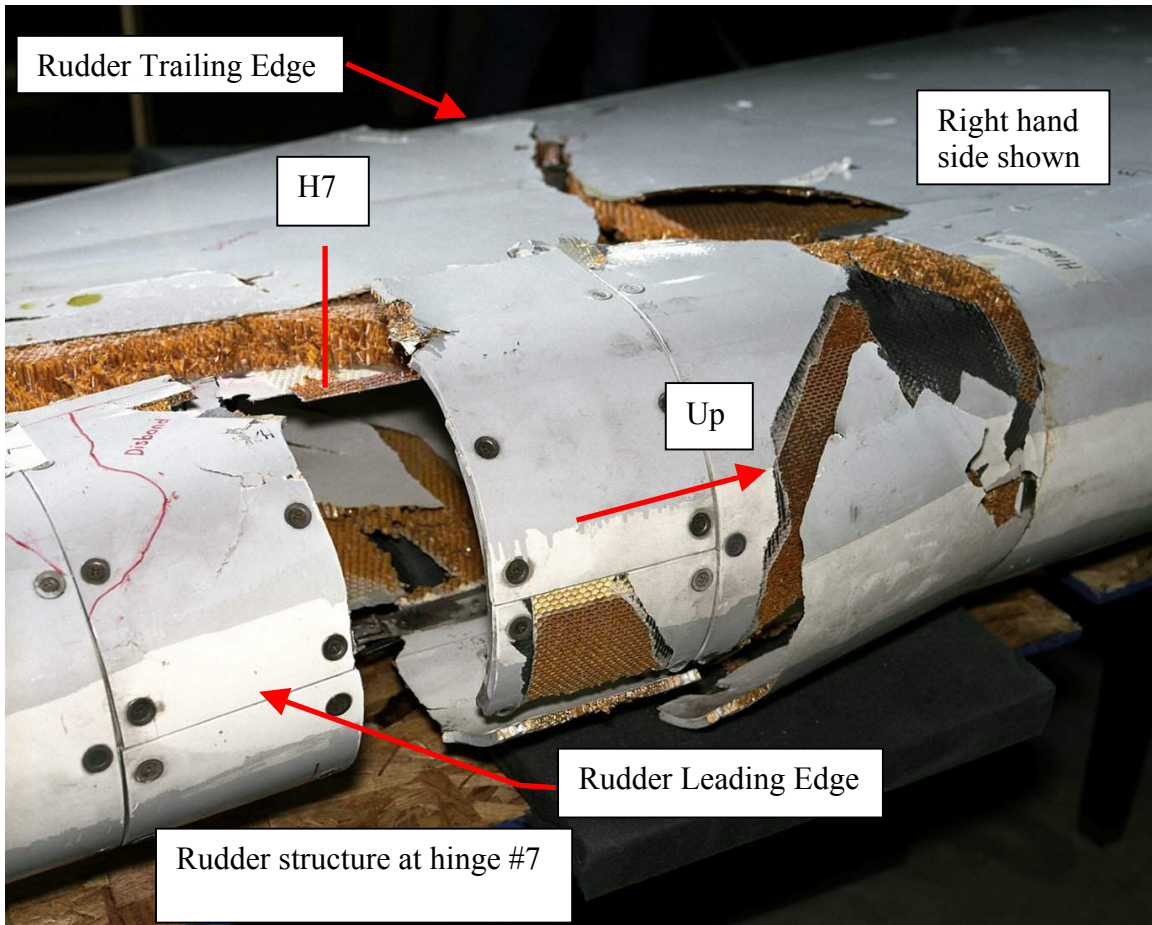


FIGURE 81