



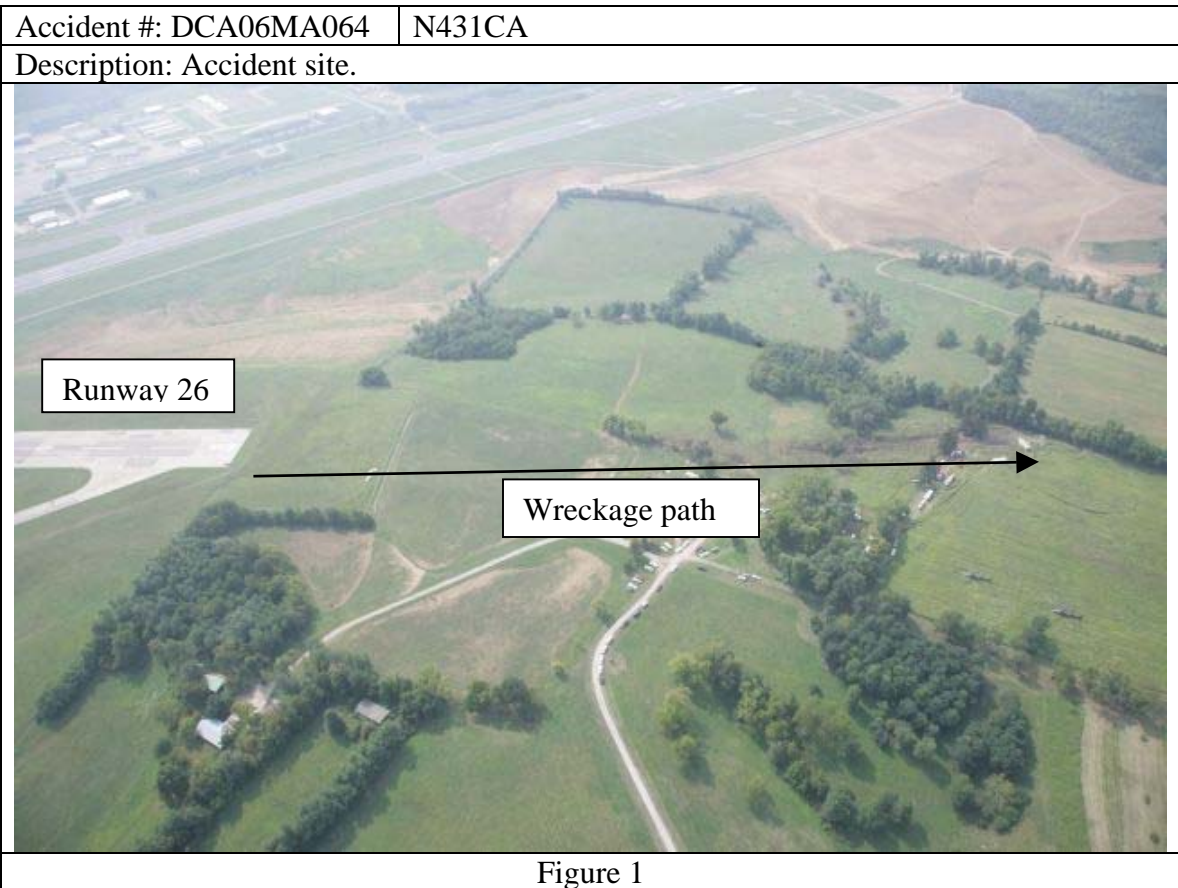
NATIONAL TRANSPORTATION SAFETY BOARD

Office of Aviation Safety
Washington, D.C. 20594

STRUCTURES GROUP CHAIRMANS FACTUAL REPORT

DCA06MA064

Attachment 2
Photo Documentation



Accident #: DCA06MA064 | N431CA

Description: Runway 26 overrun ground scars.

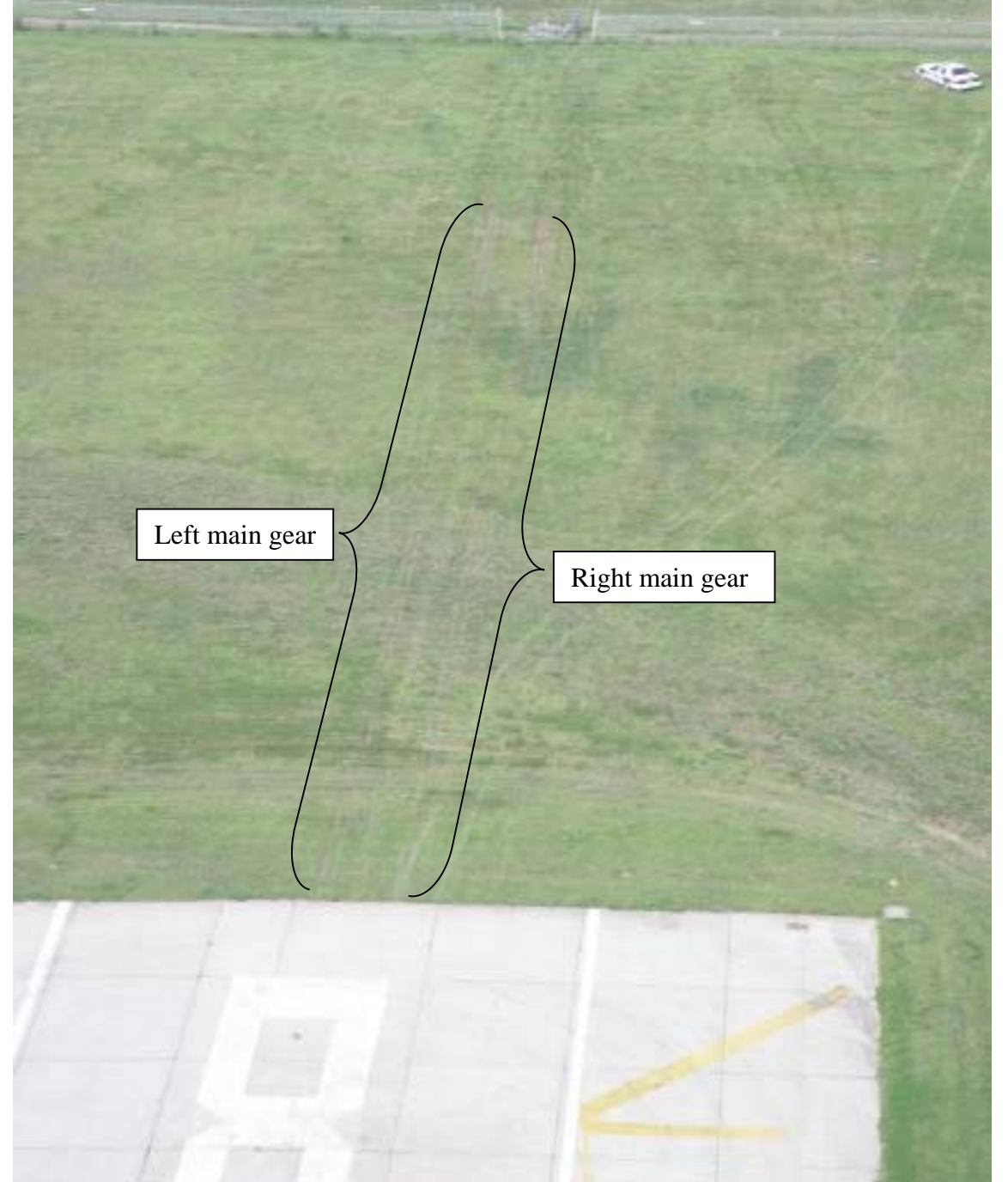


Figure 2

Accident #: DCA06MA064

Description: Close-up of runway 26 overrun ground scars.



Figure 3

Accident #: DCA06MA064

Description: Horse paddock ground scars.



Figure 4



| | |
|------------------------|--------|
| Accident #: DCA06MA064 | N431CA |
|------------------------|--------|

Description: Overhead of the accident site.

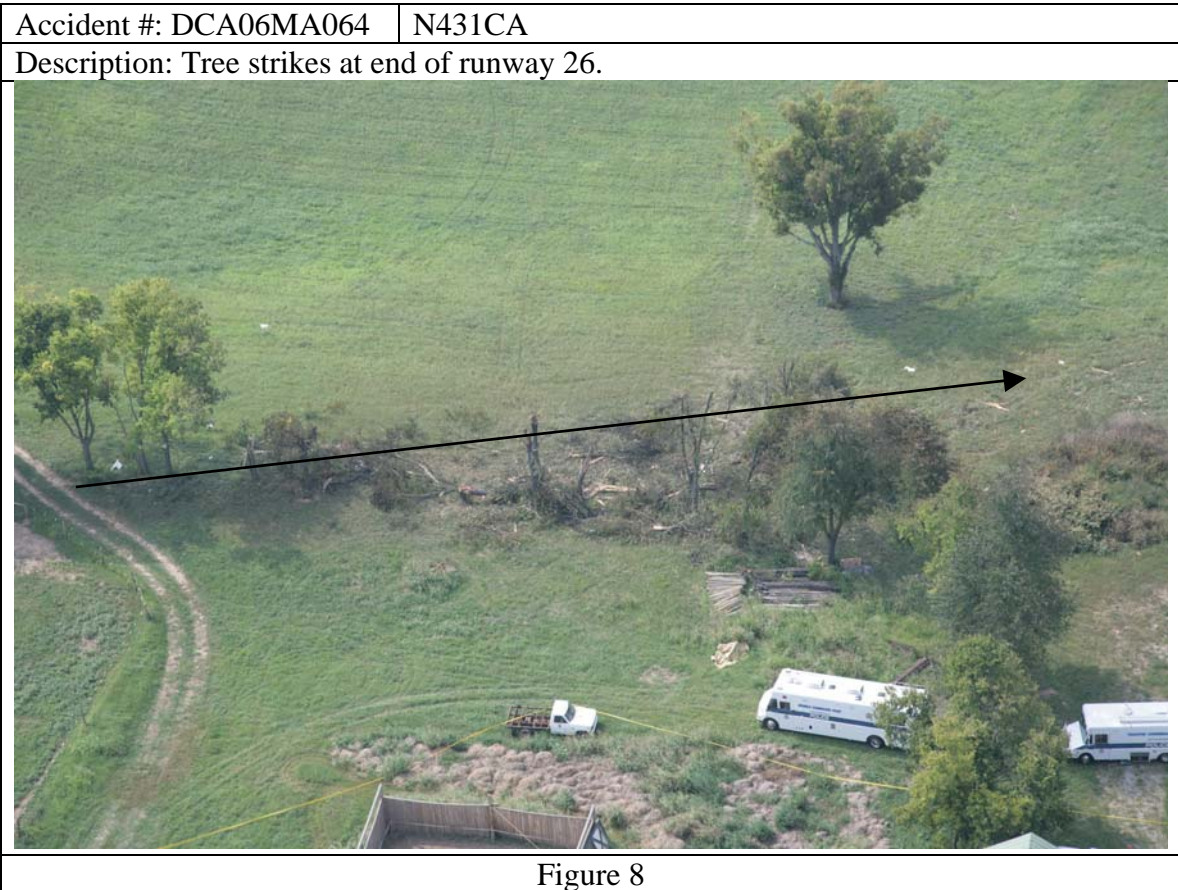


Figure 6

Accident #: DCA06MA064 | N431CA
Description: Close-up of wreckage path.



Figure 7



| | |
|--|--------|
| Accident #: DCA06MA064 | N431CA |
| Description: Overhead of tree strikes. | |



Figure 9



Figure 10

| | |
|--|--------|
| Accident #: DCA06MA064 | N431CA |
| Description: Fuselage view looking forward. | |
|  | |

Figure 11

| | |
|--|--------|
| Accident #: DCA06MA064 | N431CA |
| Description: Fuselage looking right to left. | |
|  | |

Figure 12

| | |
|------------------------|--------|
| Accident #: DCA06MA064 | N431CA |
|------------------------|--------|

Description: Cockpit looking aft.



Figure 13

| | |
|------------------------|--------|
| Accident #: DCA06MA064 | N431CA |
|------------------------|--------|

Description: Aft pressure bulkhead and engines viewed looking aft.



Figure 14

Accident #: DCA06MA064 | N431CA

Description: Empennage viewed looking right to left.



Figure 15

Accident #: DCA06MA064 | N431CA

Description: Empennage viewed looking left to right.



Figure 16



Accident #: DCA06MA064 | N431CA

Description: Left wing lower wing skin.



Figure 19