

**NATIONAL TRANSPORTATION SAFETY BOARD**

Office of Aviation Safety  
Washington, D.C. 20594

January 17, 2014

**STRUCTURES**

**Group Chairman's Factual Report**

**DCA13MA133**

**Appendix A – Figures  
(9 pages)**

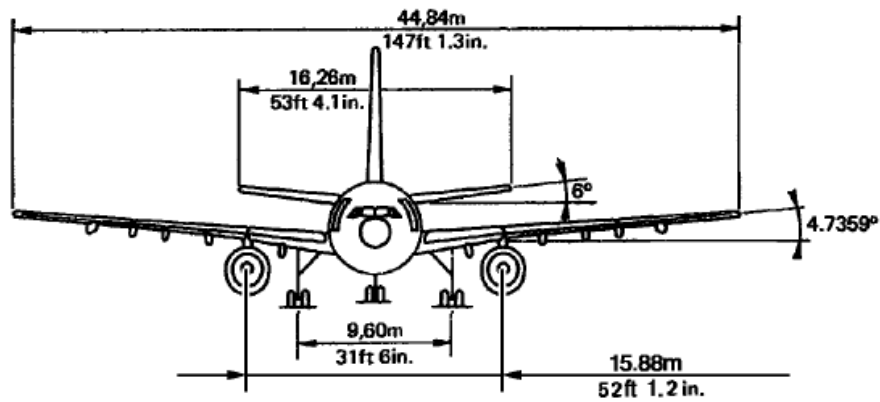
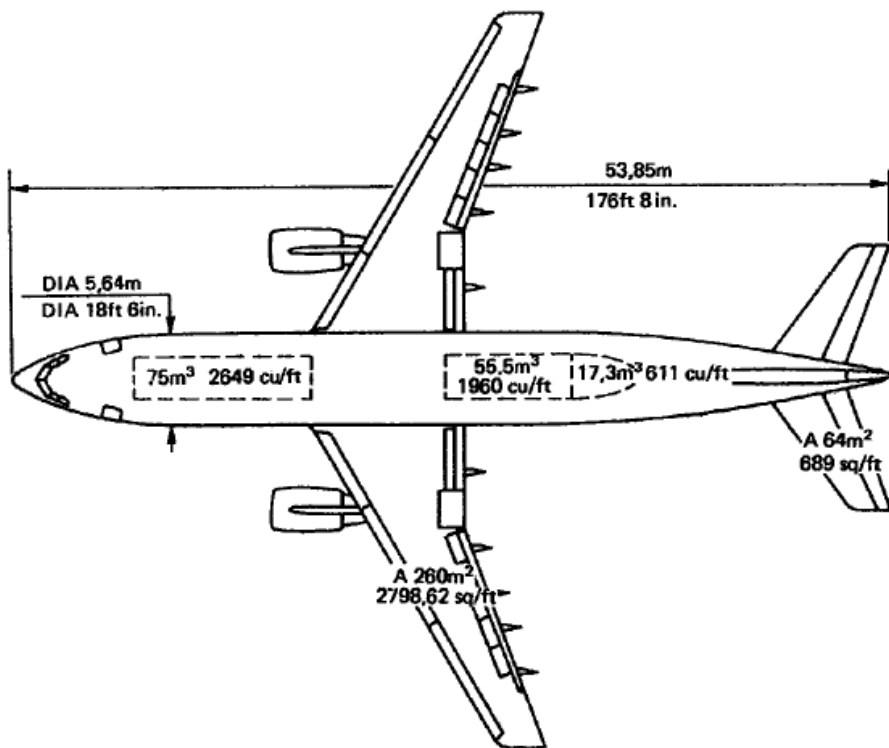
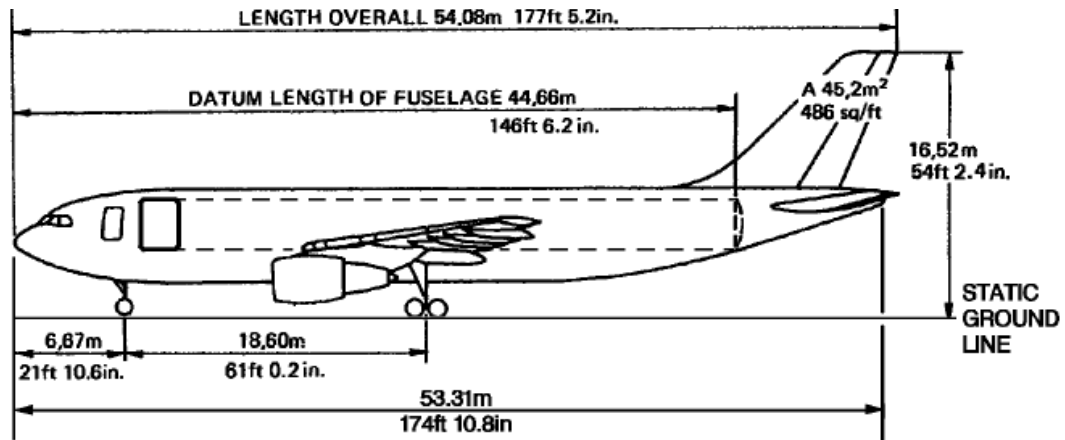


Figure 1 – Airbus A300-600F 3-view drawing

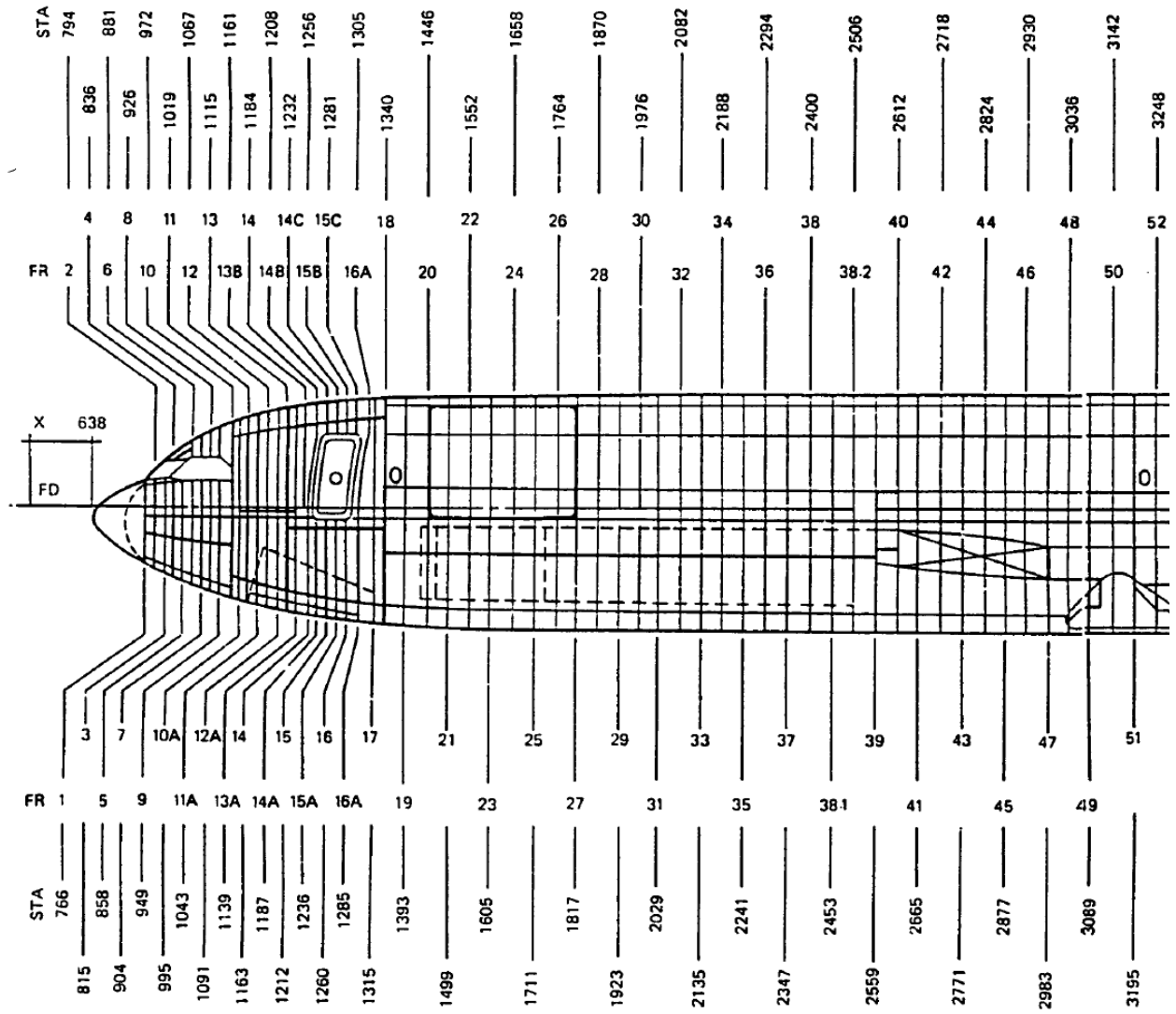


Figure 2 – A300-600F Forward Fuselage frame and station diagram

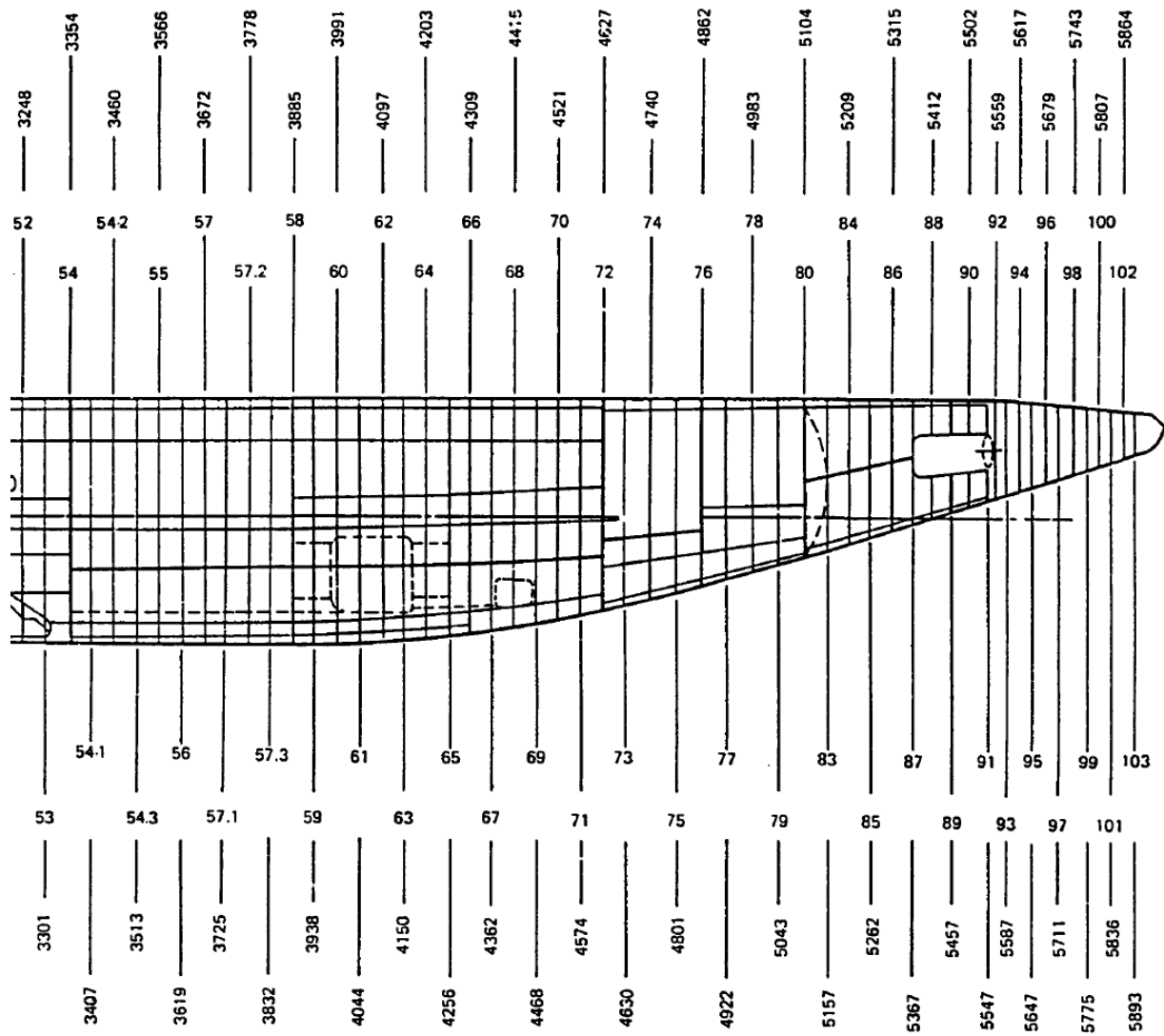


Figure 3 – A300-600F Aft Fuselage frame and station diagram

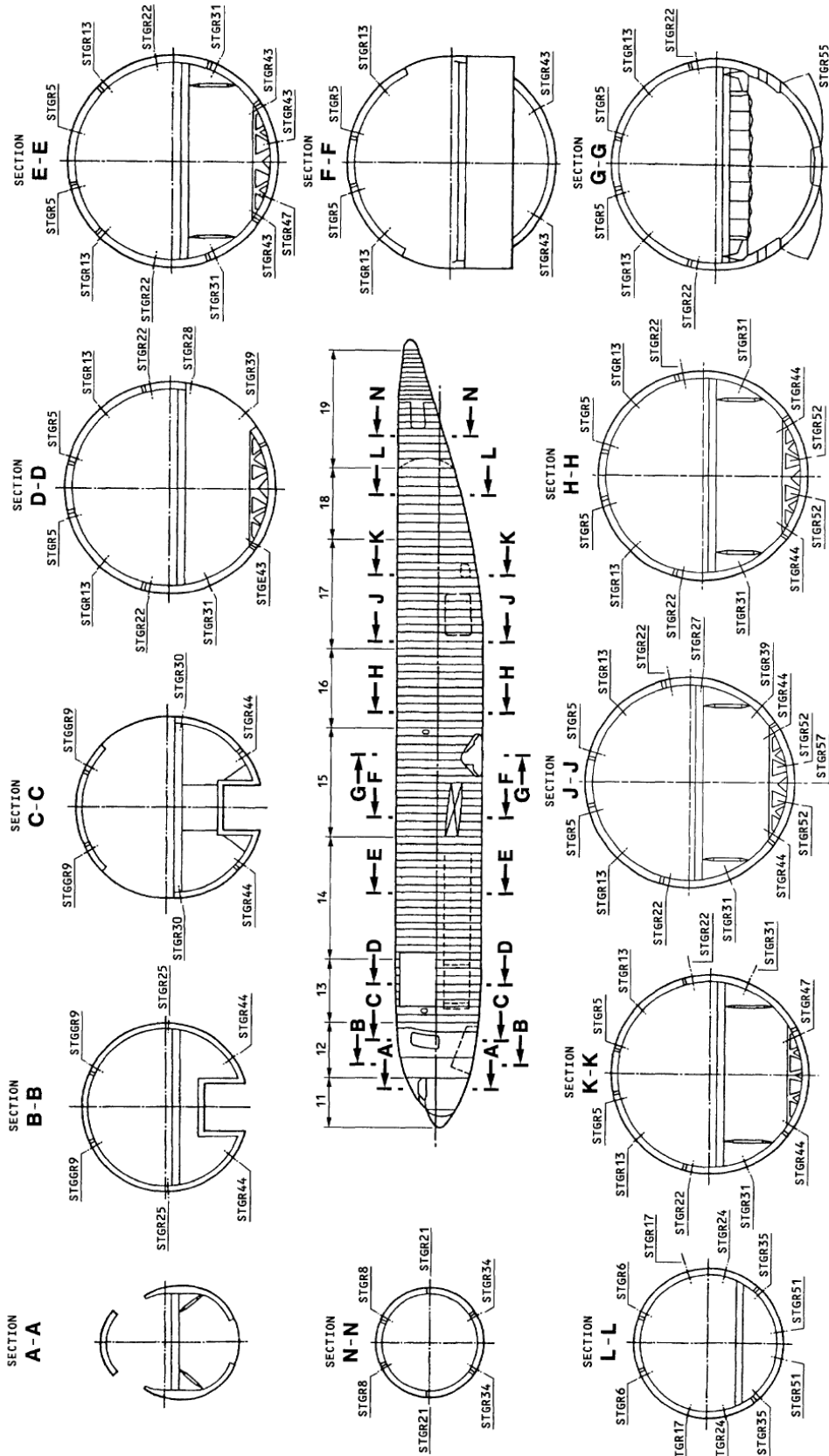


Figure 4 – A300-600F Fuselage contours and stringer diagram



**Figure 5 – Right side of forward fuselage wreckage.**



**Figure 6 – Left side of forward fuselage wreckage at nose**



**Figure 7 – Left side of forward fuselage wreckage**



**Figure 8 – Aft fuselage and right wing wreckage**



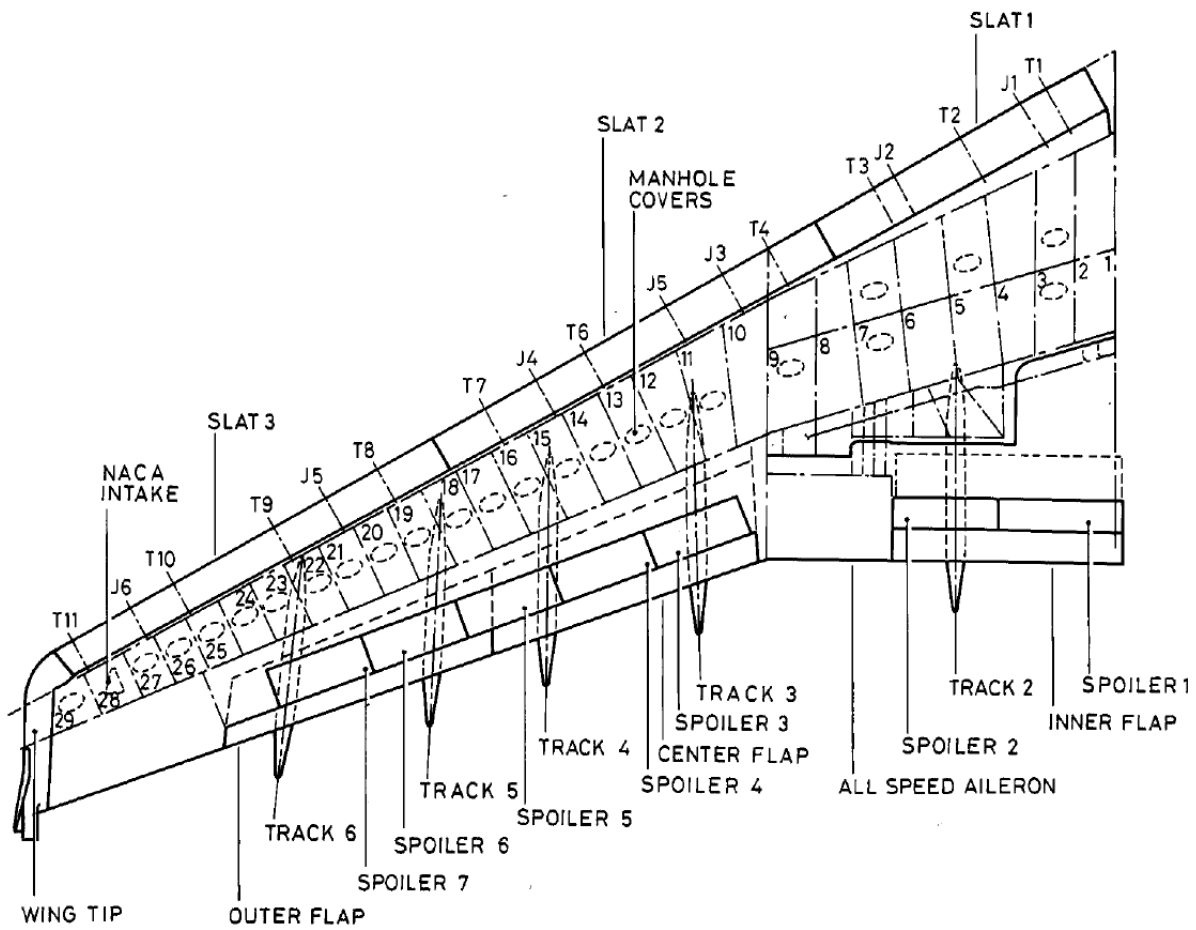


Figure 9 – A300-600F Wing drawing with rib numbers



**Figure 10 – Pick tool found in right wing fuel tank area**



**Figure 11 – Slat 2 damage with embedded wood fibers**