

LONGERON SEGMENTS FWD OF STA  
1350 (STA 1280 - 1336)

LOG # LF179

TARGET #

COORD: LAT  
LONG

DEBRIS FIELD

LF179 LOG #	FBI #	TAG #	DEBRIS FIELD
A	9-24-96-16	Z2903	GREEN
B	11-6-96-77	Z4071	GREEN
C	9-20-96-33	Z2904	GREEN
D	9-20-96-33	Z2925	GREEN

ALL PARTS ARE FREE OF SOOT

Dennis Lortie IAM  
3-21-97

Styphello  
4-5-97  
TWA

Paul D. Johnson - ALPA  
3-19-97

Tom Tedesco  
FAA 3-28-97

Pg 10/2  
R. H. Warner 3/17/97

MATES WITH LF67A

SKIN ATTACHED TO LONGERON ON LF179B ONLY

UP

FWD

10"

LONGERON OUTB'D CHD

4-5-97

LF179

INBD CHORD BENT OUTBOARD

BEND LINE BENT DOWN 90°

VIEW A-A

A

B

C

PLAN VIEW LKG DN

FWD

INBD

FWD

INBD

FWD

INBD

FWD

INBD

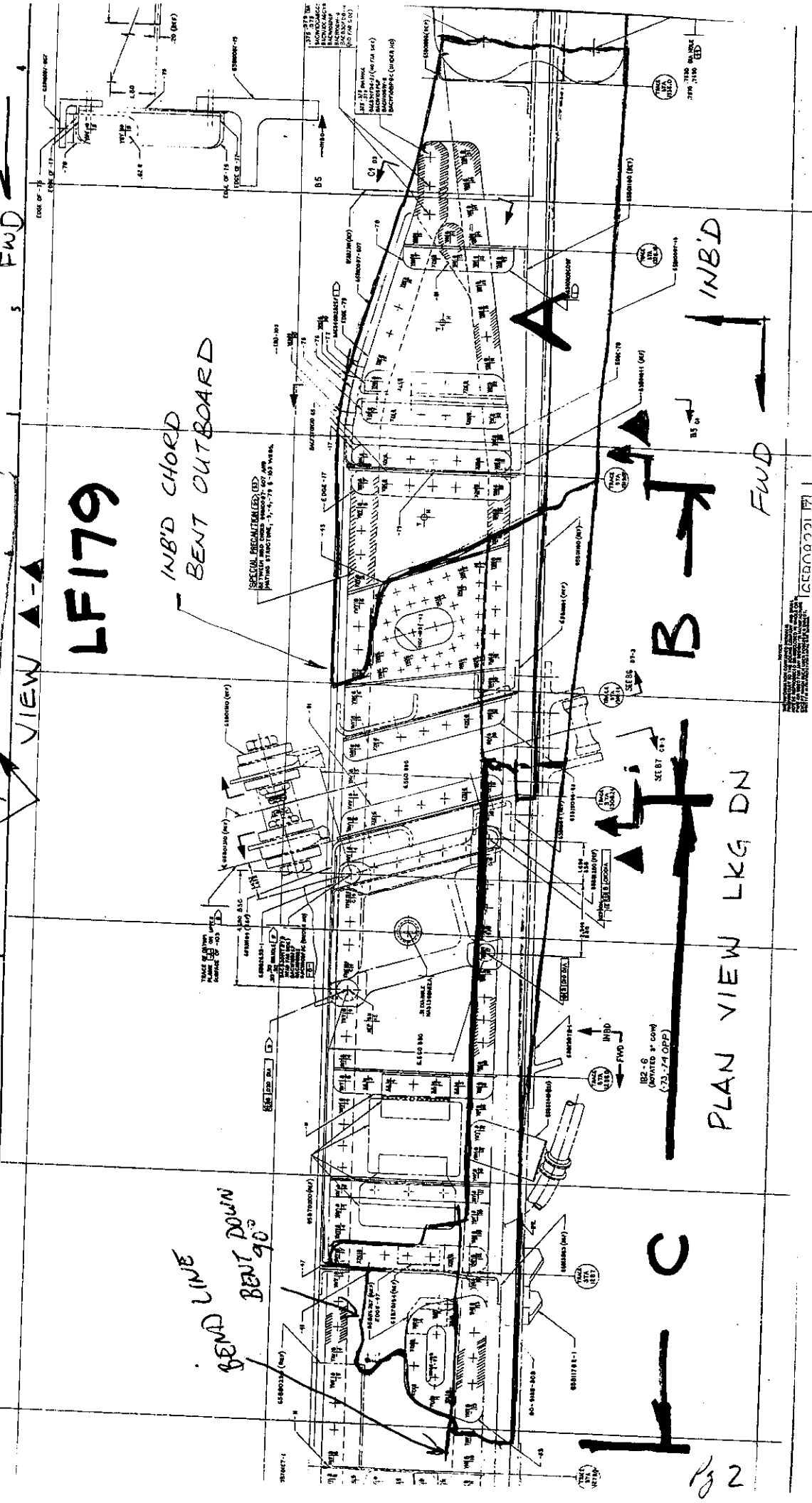
FWD

INBD

FWD

INBD

FWD



SECTION A-A  
SECTION B-B  
SECTION C-C

STA 1220

STA 1240

STA 1280

LF179D

*Handwritten note:* 2x1/2" x 1/2" x 1/2"

FWD FUSELAGE SKIN,  
VERTICAL FLANGE OF  
PLUS CHORD ALSO ATTACHED  
IN THIS REGION

FWD PORTION OF STA 1241  
PICKLE FORK FTG FLANGE  
(LOCAL)

FWD PORTION OF  
SPLICE STRAP (LOCAL)

PLAN VIEW

8"

DEFORMED  
CONDITION

TITANIUM  
SPLICE PLATE

WING  
BOX

L-SPLICE  
FITTING  
INTACT

BROKEN OFF  
PIECE OF LONGERON OUTER  
CHORD VERTICAL FLANGE

SIDE VIEW  
OF REAR SPAR  
LONGERON SPLICE

SKIN

~~TOP~~  
SHEARED OUT  
FASTENER HOLE

BENT  
OUT/D

