



NATIONAL TRANSPORTATION SAFETY BOARD

Office of Aviation Safety
Washington, D.C. 20594

February 12, 2013

Group Chairman's Factual Report

STRUCTURES

DCA12IA113

Attachment 1

Photos

Accident #: DCA12IA113 | N379SW

Description: Undamaged retract actuator beam lower T chord viewed looking aft.

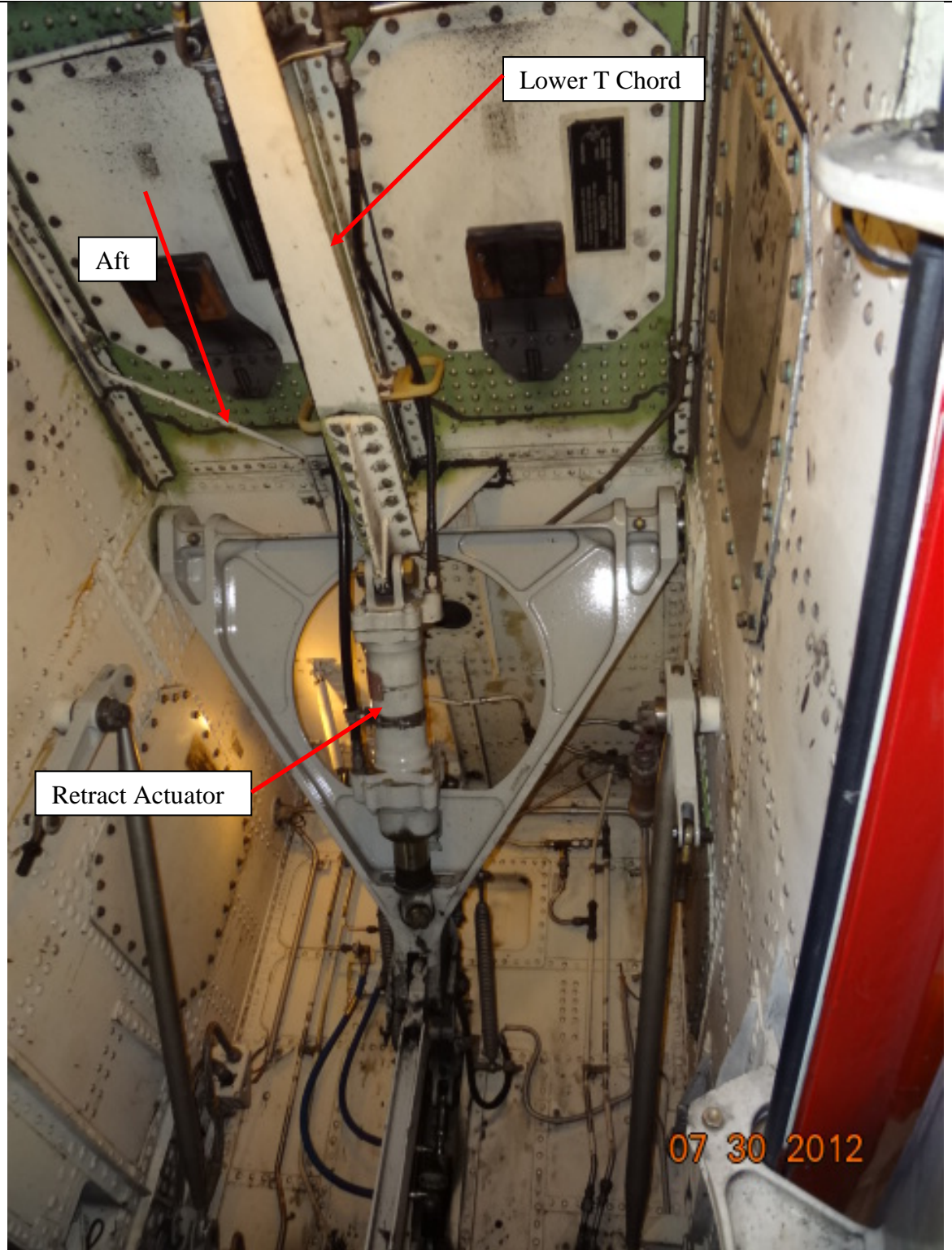


Photo 1: Undamaged retract actuator beam lower T chord viewed looking aft

Accident #: DCA12IA113

N379SW

Description: Fractured lower T chord location shown on an undamaged structure.

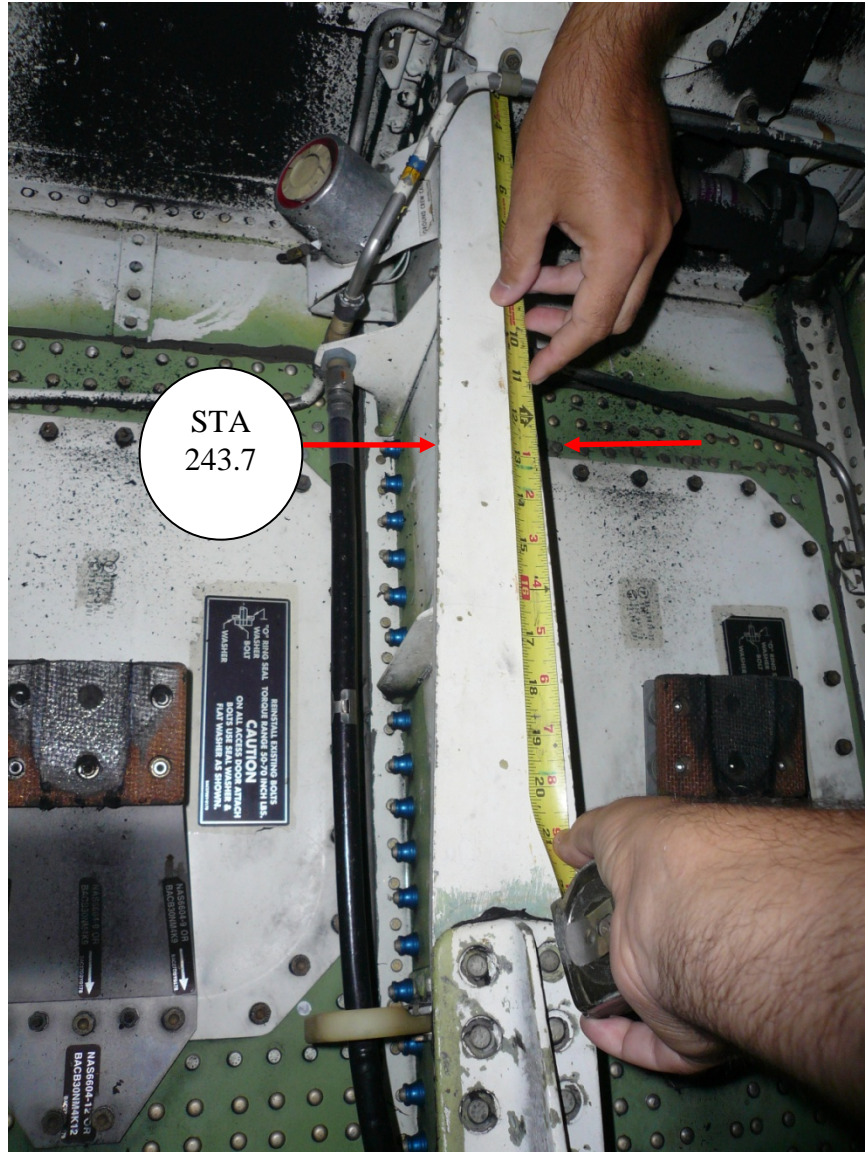


Photo 2: Fractured lower T chord location shown on an undamaged structure

Accident #: DCA12IA113

N379SW

Description: N379SW fractured lower T chord at fuselage station 243.7.

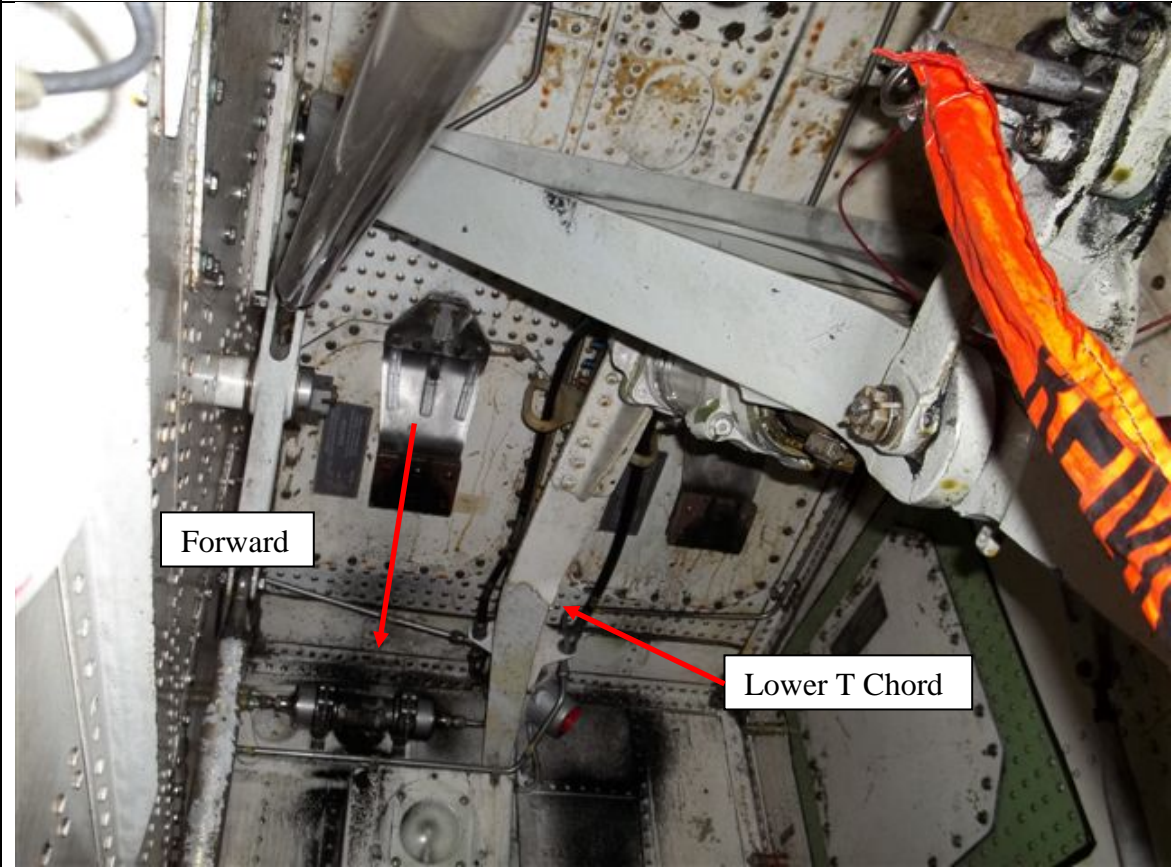


Photo 3: N379SW fractured lower T chord at fuselage station 243.7

Accident #: DCA12IA113

N379SW

Description: N379SW fractured lower T chord.

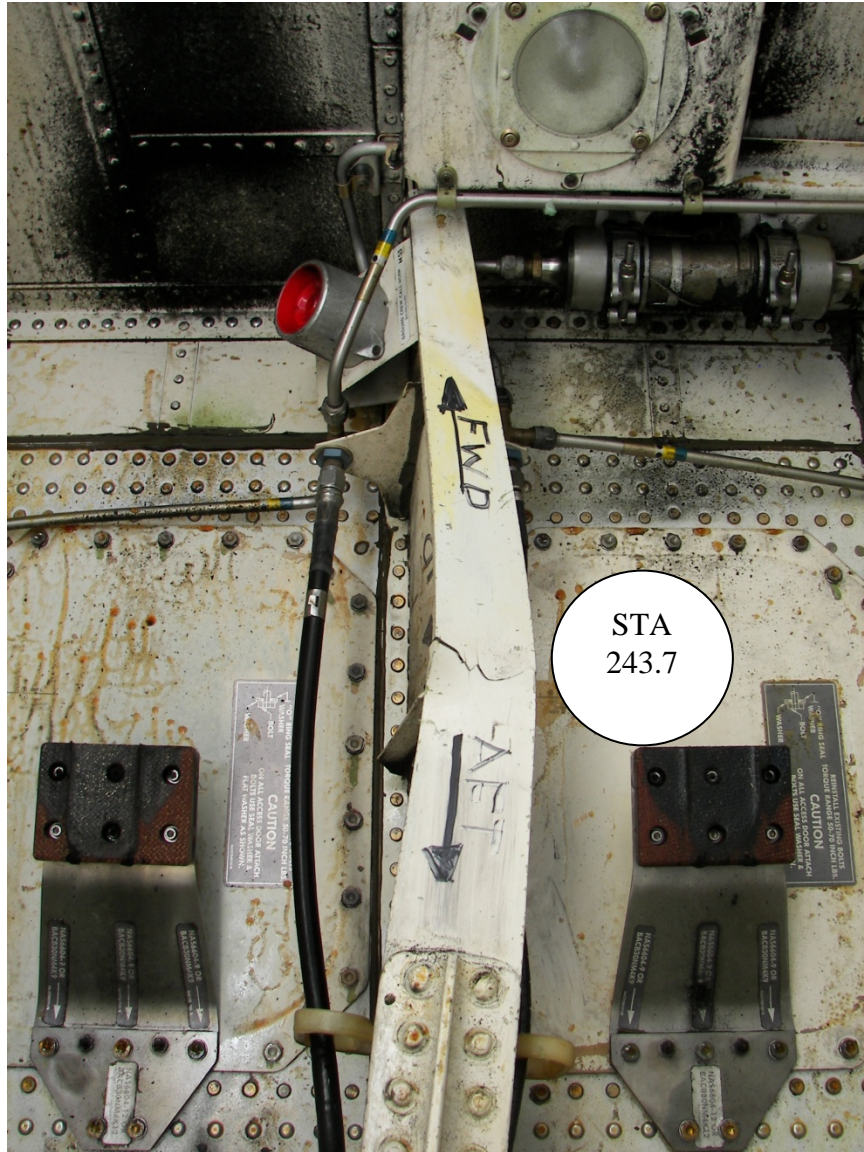


Photo 4: N379SW fractured lower T chord

Accident #: DCA12IA113

N379SW

Description: N379SW fractured lower T chord located 16 inches aft of the nose wheel forward bulkhead.



Photo 5: Fractured lower T chord located 16 inches aft of the nose wheel forward bulkhead

Accident #: DCA12IA113 | N379SW

Description: N379SW fractured lower T chord and buckled webs.

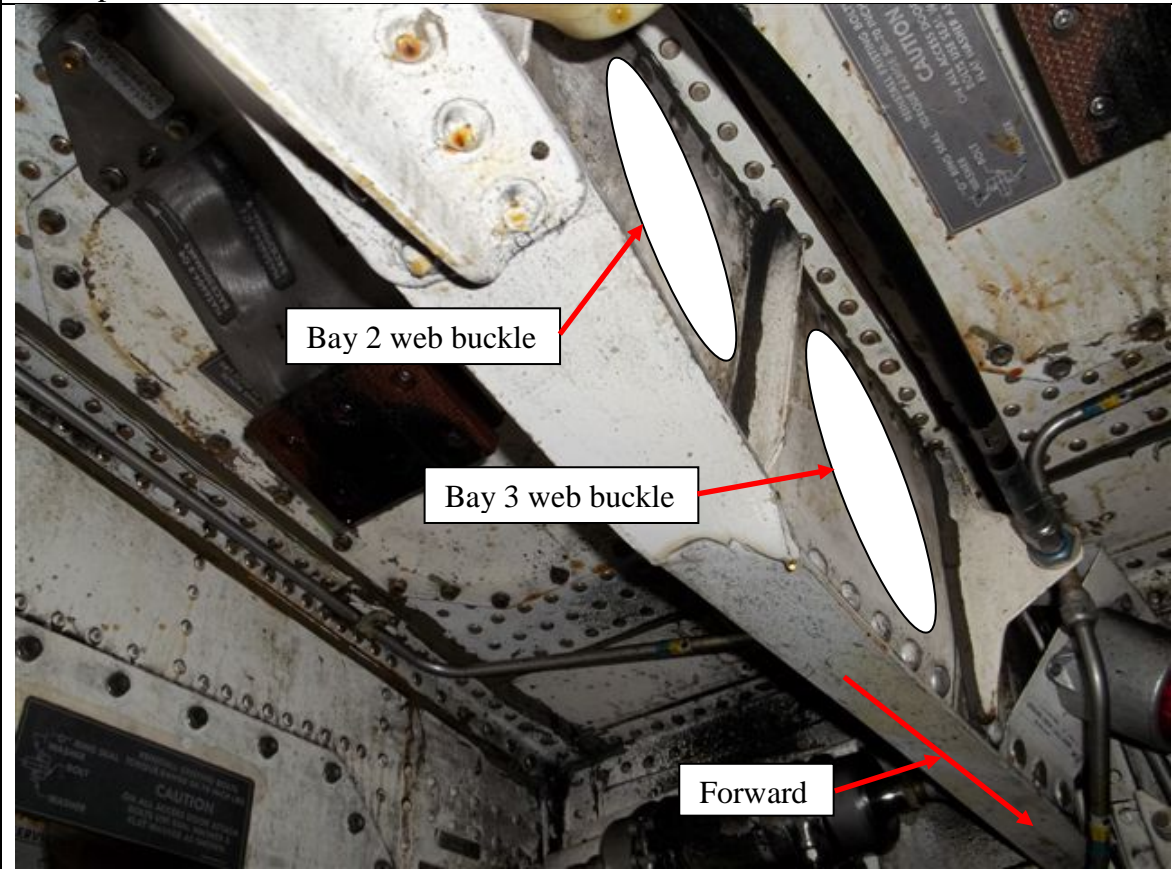


Photo 6: N379SW fractured lower T chord and buckled webs

Accident #: DCA12IA113

N379SW

Description: N379SW fractured 65-45819-39 lateral stiffener at BL 0 looking aft.

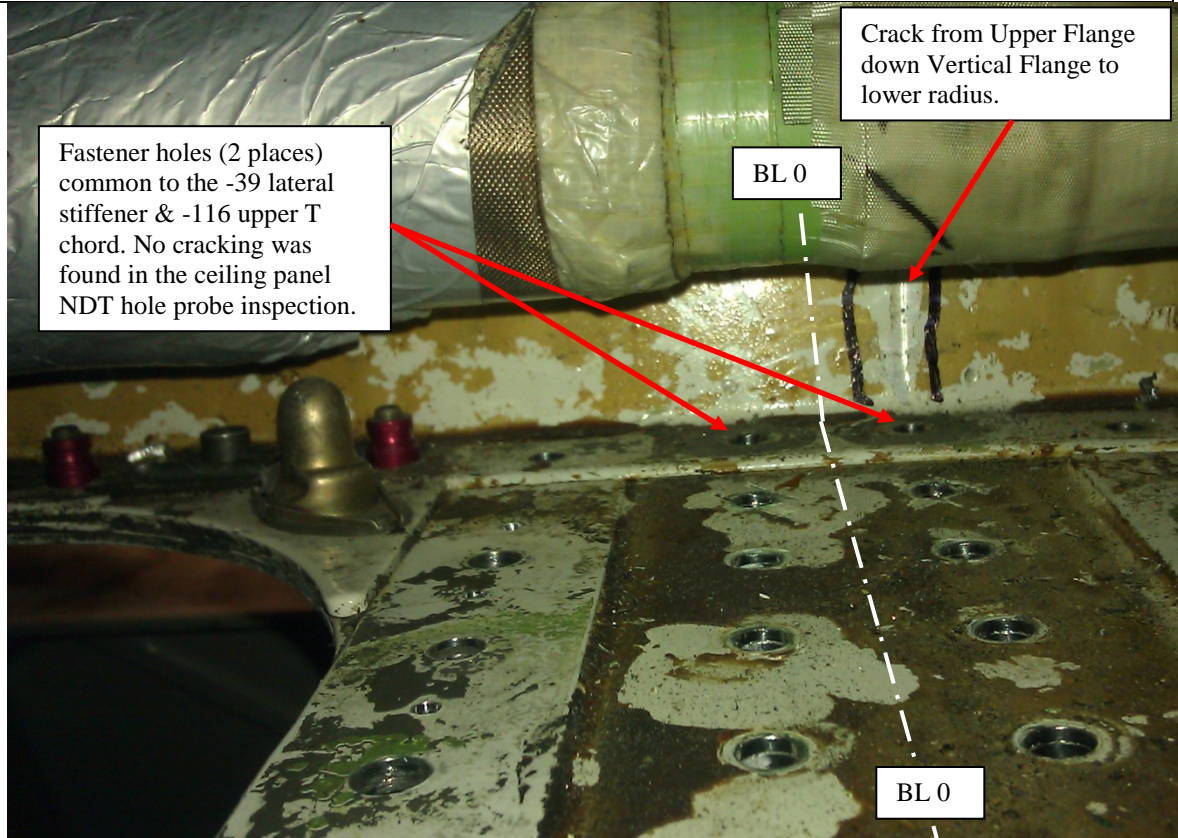


Photo 7: N379SW fractured 65-45819-39 lateral stiffener at BL 0 viewed looking aft

Accident #: DCA12IA113 | N379SW

Description: N379SW forward side of the 65-45819-39 lateral stiffener.

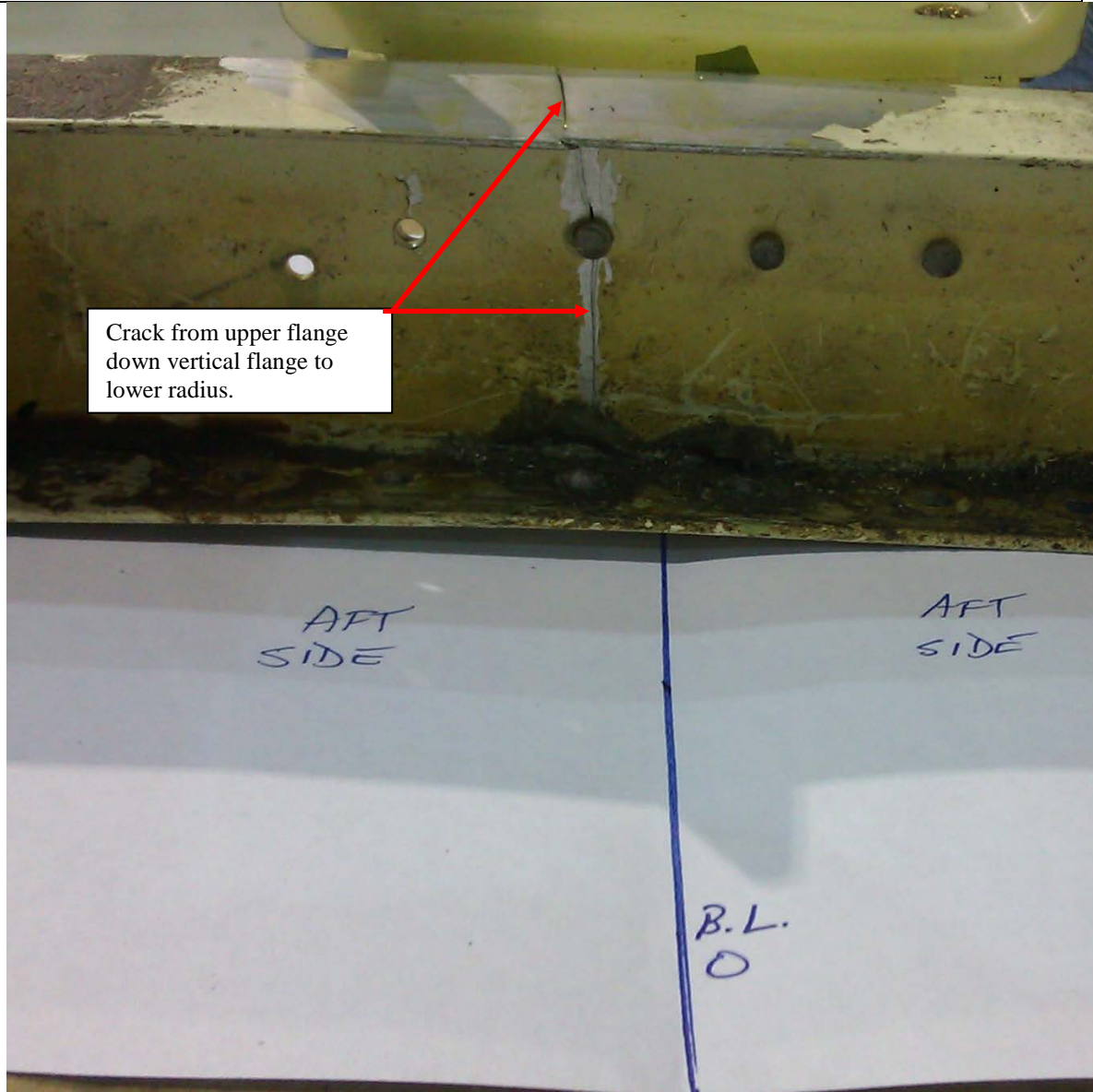


Photo 8: N379SW forward side of the 65-45819-39 lateral stiffener

Accident #: DCA12IA113

N379SW

Description: N379SW aft side of the 65-45819-39 lateral stiffener.



Crack from upper flange
down vertical flange to
lower radius.

Photo 9: N379SW aft side of the 65-45819-39 lateral stiffener

Accident #: DCA12IA113

N379SW

Description: N379SW ruptured hydraulic line.



Photo 10: N379SW ruptured hydraulic line

Accident #: DCA12IA113

N379SW

Description: N379SW ruptured hydraulic line.



Photo 11: N379SW ruptured hydraulic line