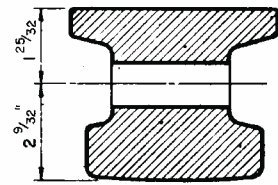
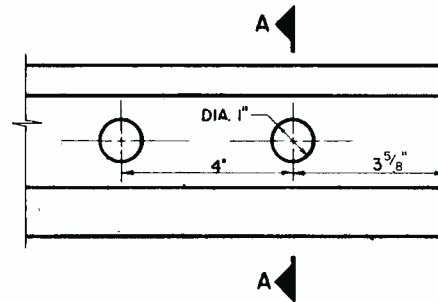


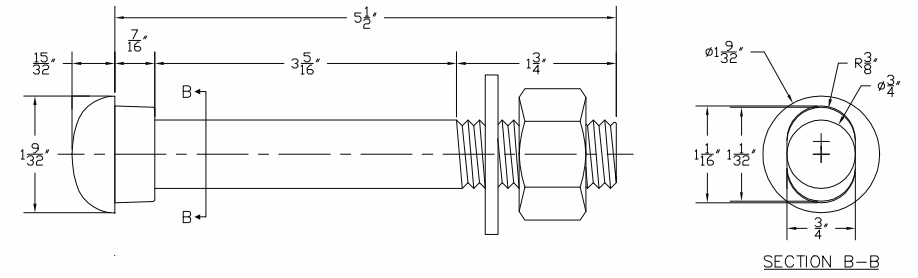
150 LB THIRD RAIL
SCALE: FULL SIZE



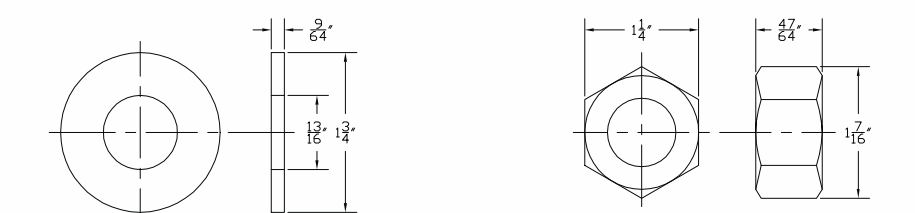
SECTION A
SCALE: 1/2" = 1"



150 LB RAIL DRILLING
SCALE: 1/2" = 1"

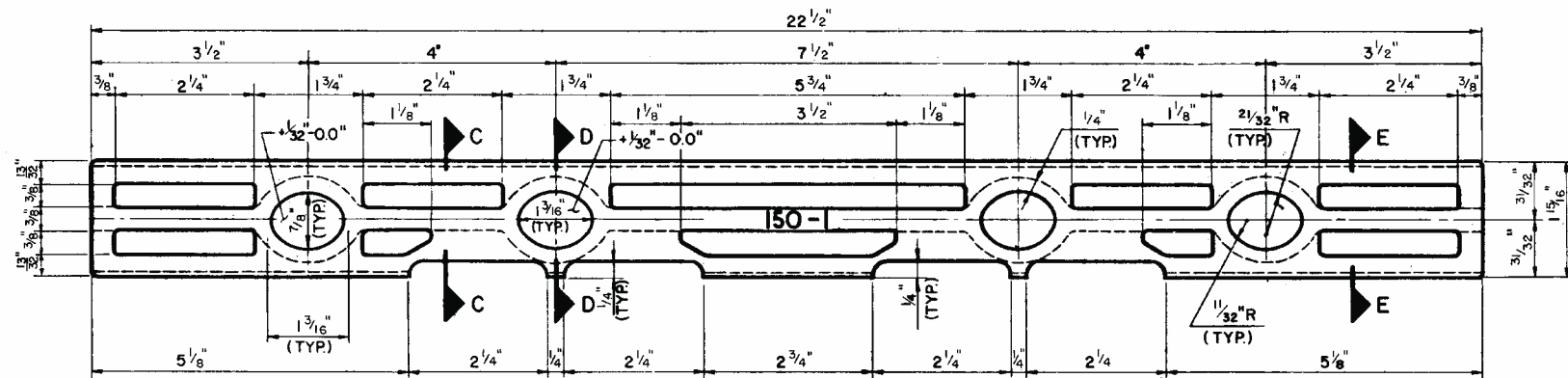


OVAL NECK TRACK BOLT - ASTM A183 GRADE 2
SCALE: FULL SIZE

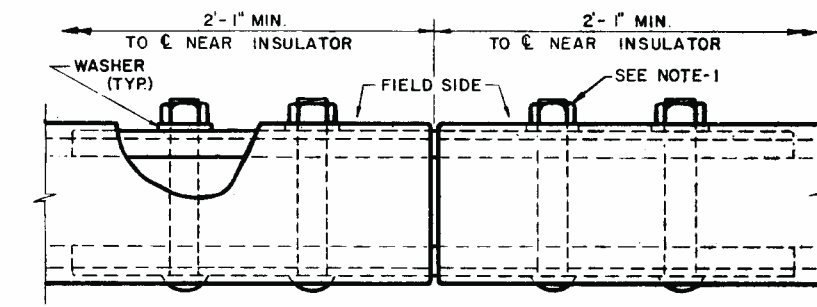


SPLICE PLATE WASHER ANSI/ASME B18.22.1
SCALE: FULL SIZE

3/4" HEAVY HEX NUT - ASTM A183, GRADE 2
SCALE: FULL SIZE

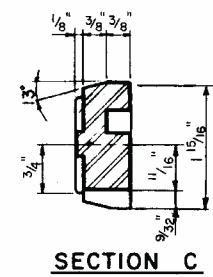


MATERIAL: CAST MALLEABLE IRON ASTM A-47, GRADE 35018
DIMENSION TOLERANCE: ± 1/32

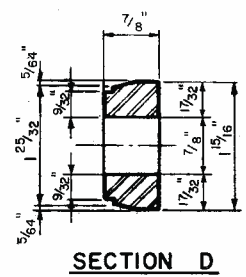


PLAN OF SPLICE ASSEMBLY
SCALE: 3/8" = 1"

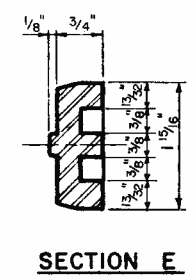
- NOTE:
1. TORQUE NUTS TO 12,500 IN.-POUNDS
 2. THIRD RAIL REF. SPEC. NO. PD-801
 3. SPLICE ASSEMBLY REF. SPEC. NO. PD-803



SECTION C



SECTION D



SECTION E

THIRD RAIL SPLICE PLATE
SCALE: 3/4" = 1"

#	DATE	DESCRIPTION	DATE	DESCRIPTION	S.R. ENGINEER-POWER	DESIGNER-POWER DESIGN
1	07/21/2005	OVAL NECK TRACK BOLT & NUT.				



150 LB THIRD RAIL
SPLICE PLATE AND SPLICE ASSEMBLY

DATE	2/26/2001
SCALE	NONE
SHEET	1 OF 1
DRAWING #	STD-301
POWER\SCAN\DR133	