



Photo facing south, showing two tracks separated by pipe rack



Photo looking at gate at south end (end of tracks) in plant.





Photo facing north toward the end of the tracks.

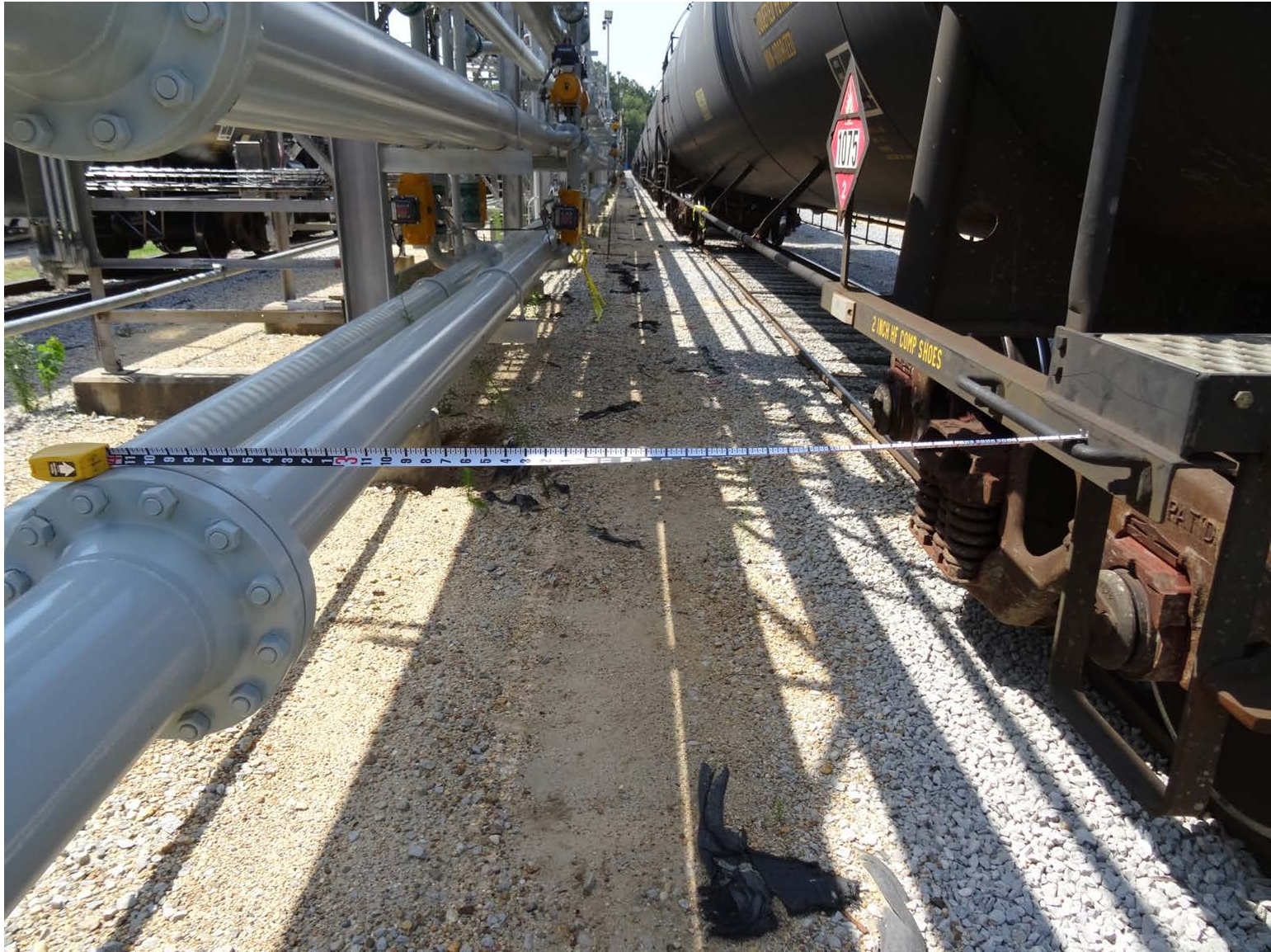


Photo between east track and pipe rack, measurement of clearance shown.





Photo facing north approaching the accident location from the roadbed, east of the east track.



Photo facing north, accident occurred where the cars are separated, adjacent to group of people in photo. Note location of wheels are marked where they came to rest following the accident.





A-end of Car Number UTLX-953966, employee was found in this location.





Photo facing north between the east track and the pipe rack.  
Note a brake stick and train documentation on the ground.