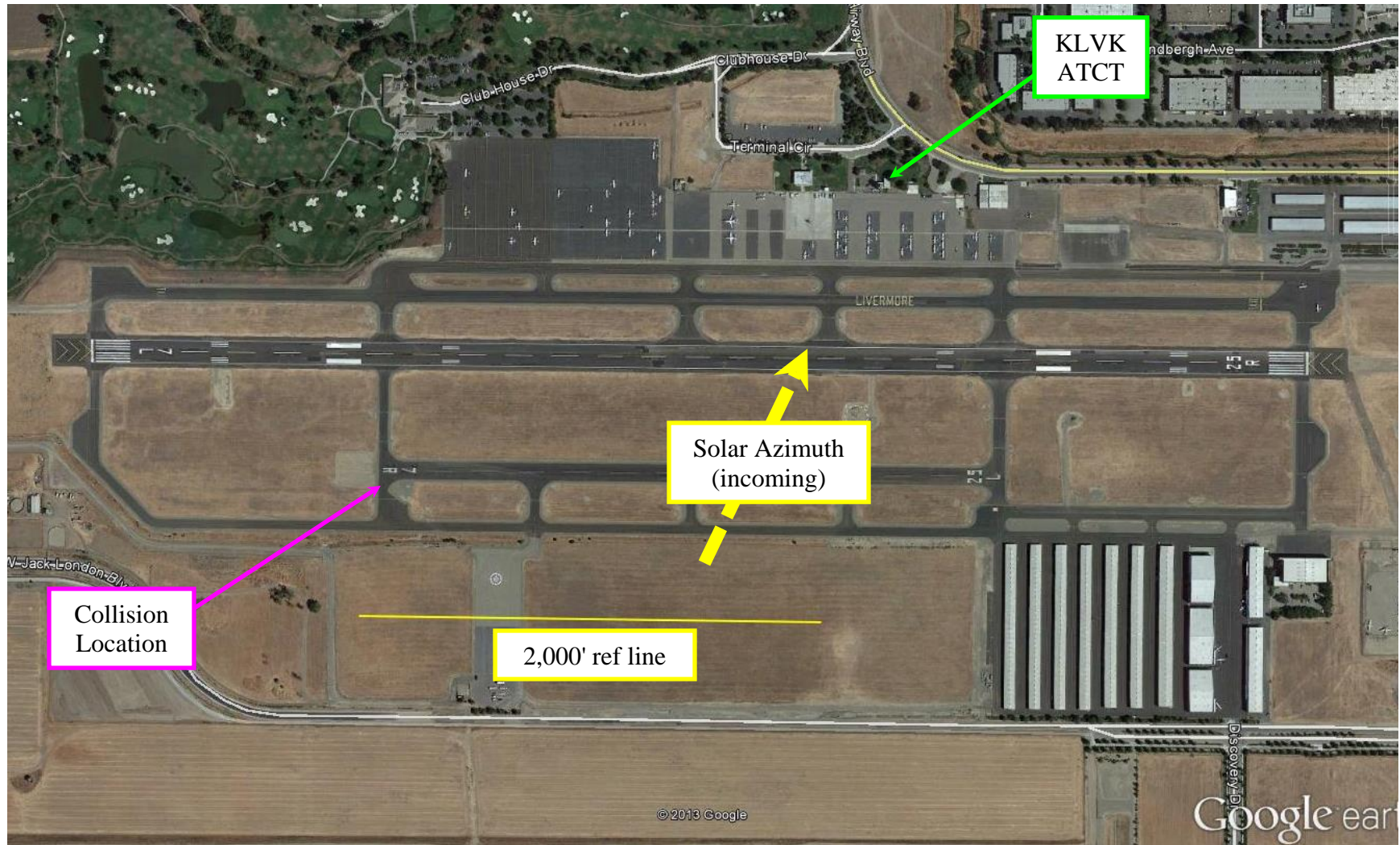
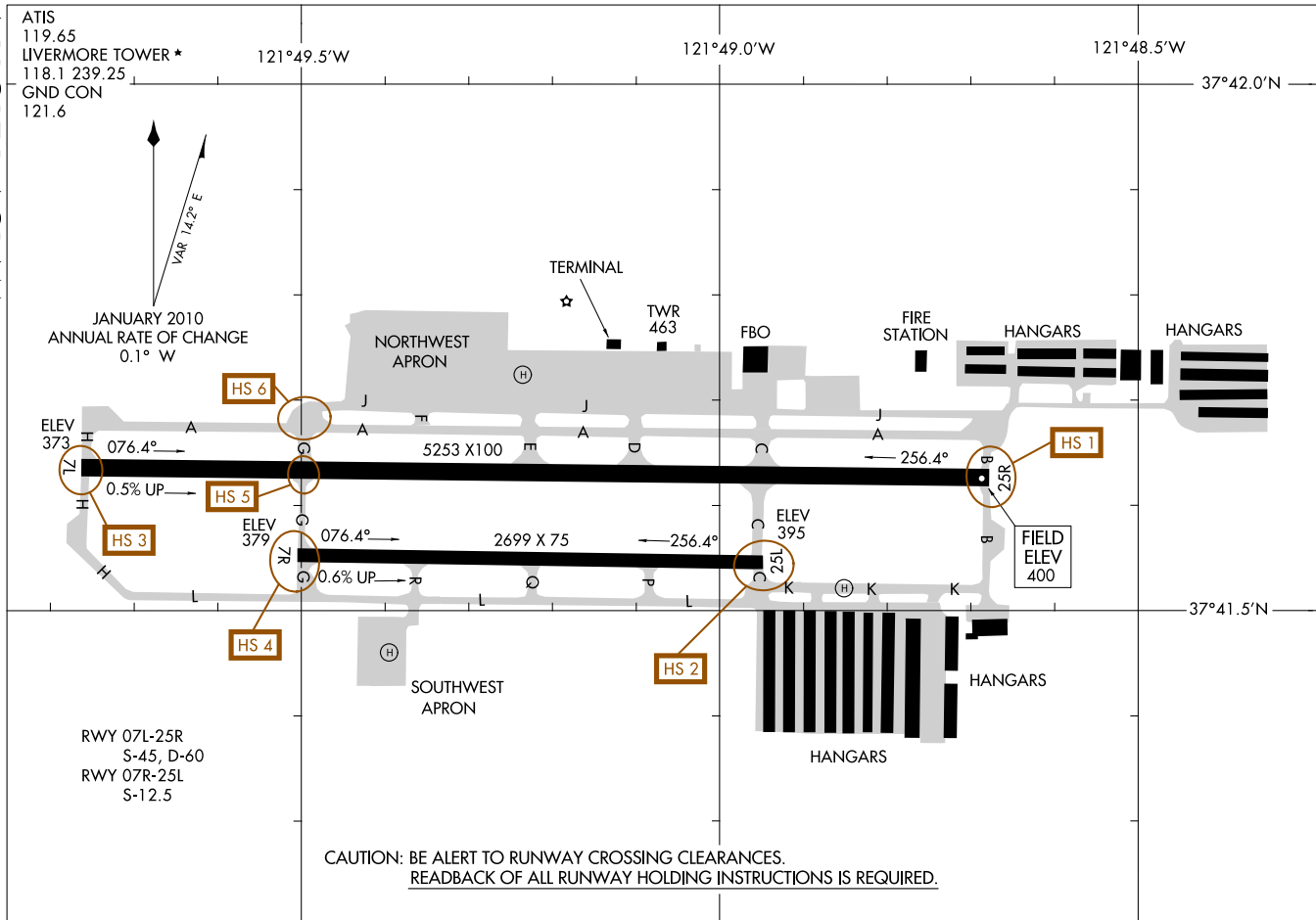


KLVK Site Information (WPR14LA035AB)



Sun Azimuth: 201.76°; Elevation 39.13°



CALIFORNIA

ATWATER			
CASTLE (MER)	HS 1		Complex area. Verify correct taxi route. Areas south of Twy A and Twy G are private ramp.
	HS 2		Tfc congestion due to large volume of acft proceeding to and from Rwy 31.
BEALE AFB			
BEALE AFB (BAB)	HS 1		Twy B, high-speed U-2 mobile tfc when Rwy 15 in use.
	HS 2		Twy E, high-speed U-2 mobile tfc when Rwy 33 in use.
	HS 3		Twy F, in the vicinity of Twy C, Twy L and Twy K. Frequent U-2 and high speed mobile tfc, slope of the twy limits visibility in both directions.
CARLSBAD			
MC CLELLAN-PALOMAR (CRQ)	HS 1		ATC has difficulty seeing small acft taxiing eastbound on Twy A, when "Large Jets" are parked on the ramps.
CHINO			
CHINO (CNO)	HS 1		Pilots taxiing south on Twy D, sometimes fail to turn onto Twy A and proceed onto Rwy 08L-26R by mistake.
	HS 2		Pilots taxiing west on Twy L, sometimes turn onto Rwy 03-21 by mistake.
CONCORD			
BUCHANAN FIELD (CCR)	HS 1		Pilots traveling southeast on Twy J and instructed to taxi via Twy E to Rwy 01L or Rwy 19R sometimes miss the turn onto Twy E and proceed onto Rwy 01L-19R at Twy J without clearance.
	HS 2		Pilots departing the Rwy 32L run-up area sometimes mistake Twy J for Rwy 32L.
	HS 3		Complex intersection at Rwy 01R-19L, Twy J, Twy A, Twy C and Twy K.
	HS 4		Pilots on Twy A sometimes fail to comply with hold short instructions for Rwy 32L apch area.
HAWTHORNE			
JACK NORTHROP FIELD/ HAWTHORNE MUNI (HHR)	HS 1		Rwy 25 run-up area, do not depart the run-up area without ATC clearance.
HAYWARD			
HAYWARD EXECUTIVE (HWD)	HS 1		Acft approaching Twy A from the ramp sometimes fail to turn onto Twy A, proceeding onto Twy E and ultimately Rwy 10L-28R.
	HS 2		Area not visible from ATCT.
	HS 3		Area not visible from ATCT.
LANCASTER			
GENERAL WM J FOX AIRFIELD (WJF)	HS 1		Pilots taxiing from ramp sometimes mistake Rwy 06-24 for Twy A.
LA VERNE			
BRACKETT FIELD (POC)	HS 1		Short distance between parallel Rwy 25R and Rwy 26L. Be aware of the rwy holding position markings for the parallel rwy and do not cross without authorization.
LIVERMORE			
LIVERMORE MUNI (LVK)	HS 1		Pilots instructed to hold short of Rwy 25R at Twy B sometimes fail to comply. Pilots sometimes land on Rwy 25R without clearance.
	HS 2		Pilots instructed to hold short of Rwy 25L at Twy C sometimes fail to comply.
	HS 3		Pilots instructed to hold short of Rwy 07L at Twy H sometimes fail to comply.
	HS 4		Pilots instructed to hold short of Rwy 07R at Twy G sometimes fail to comply.
	HS 5		Pilots instructed to hold short of Rwy 25R at Twy G sometimes fail to comply.
	HS 6		Pilots may be confused at the intersections of Twy J, Twy A, and Twy G sometimes fail to comply with taxi instructions.