

DCA-13-MR-002
Derailment/Hazardous Materials Release
Paulsboro, NJ
November 30, 2012

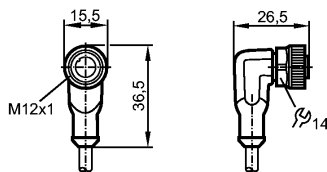
ATTACHMENT 18

Limit Switch Schematic

EVC006

ADOAH040MSS0010H04

Connection technology



Product characteristics

Socket

For sensors with

M12 connector

Free from silicone

Free from halogen

gold-plated contacts

Electrical data

Electrical design		AC/DC
Operating voltage	[V]	250 AC / 300 DC
Current rating	[A]	4
Protection class		II

Environment

Ambient temperature	[°C]	-25...90, cRUUs: max. 75 °C
Protection		IP 67 / IP 68 / IP 69K

Mechanical data

Design		angled
Material body		housing: TPU (urethane) orange; sealing: Viton
Material nut		brass; nickel-plated
Tightening torque for knurled nut [Nm]		0.6...1.5
Drag chain suitability		<p>Bending radius for flexible applications:</p> <p>min. 10 x cable diameter max. 3.3 m/s for a horizontal travel length of 5 m and max. acceleration of 5 m/s²</p> <p>Travel speed:</p> <p>Bending cycles:</p> <p>Torsional strain:</p> <p>> 5 million ± 180 °/m</p>
Weight	[kg]	0.339

Electrical connection

Connection		PUR cable / 10 m; 4 x 0.34 mm ² (42 x Ø 0.1 mm); Ø 4.9 mm; halogen-free
Sheath color		black

Wiring



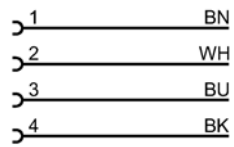
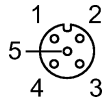
EVC006

ADOAH040MSS0010H04

Connection technology

Core colors

BK black
BN brown
BU blue
WH white



Remarks

Pack quantity [piece] 1

ifm efector, inc. 782 Springdale Drive, Exton, PA 19341 — We reserve the right to make technical alterations without prior notice. — US — EVC006 — 15.06.2010