

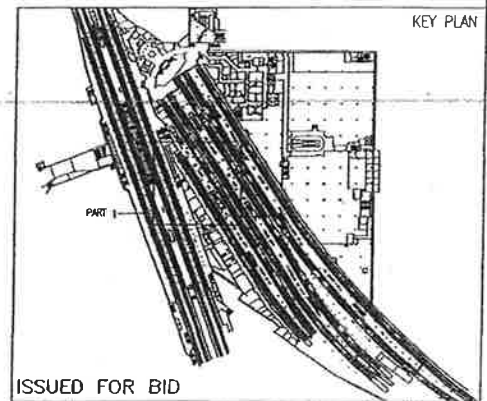
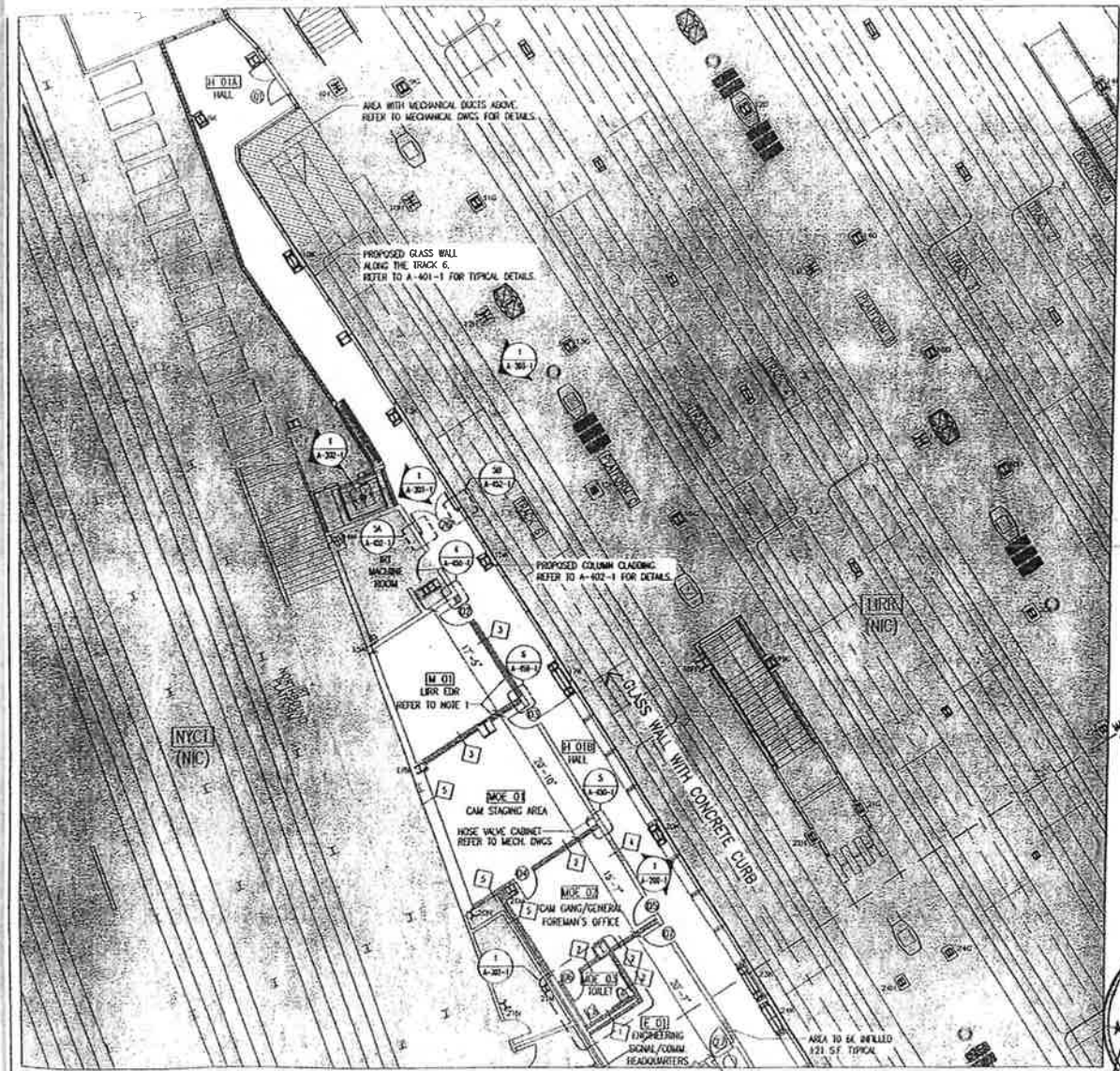


NOTES:

-  AREA NOT IN CONTRACT
-  AREA TO BE INFILLED WITH CMU (±21 SF, EACH TYP.)


1. EXTEND CMU WALLS TO UNDERSIDE OF STRUCTURE ABOVE FOR 2 HOUR RATING.
 @ LRRR EDR (4 01)



ISSUED FOR BID

REVISION	DESCRIPTION	DATE	APPROVED

IT IS A VIOLATION OF THE PROFESSIONAL LICENSE LAW FOR ANY PERSON TO ALTER THIS DRAWING IN ANY WAY, UNLESS ACTING UNDER THE DIRECTION OF A LICENSED PROFESSIONAL ARCHITECT/ENGINEER AS APPLICABLE. THE ALTERING ARCHITECT/ENGINEER SHALL AFFIX HIS HER SEAL AND THE NOTATION "ALTERED BY" FOLLOWED BY HIS OR HER SIGNATURE AND DATE OF ALTERATION.

 Long Island Rail Road

ATLANTIC TERMINAL
 EMPLOYEE FACILITIES TRACK 6
 CONTRACT# 5913

of Domenico + Partners
 Architects Planners Engineers
 100 West 42nd Street
 10th Floor
 New York, NY 10018

PROPOSED PLAN
 PART 1

DESIGNED BY S. MIN	CHECKED BY L. HEM	DATE 02-27-04
REVISED BY S. MIN	RECHECKED BY L. HEM	DRAWING NO. A-110-1
PERMITTED BY V. PICCOTTO	APPROVED BY J. DI DOMENICO	REASON



1 PROPOSED PLAN - PART 1
 SCALE: 1/8" = 1'-0"

