

◀ B24A    HHOV    B 26A ▶

# B 26A KENSICO

PHONE: (502) 8-405  
(914) 686 8-405  
HTV 4758

- FIRE
  - ENTRY
  - AC LOCAL
  - DC LOCAL
  - SWSM LOCAL
  - TROUBLE
  - CHARGER TROUBLE
  - LR 86 FAIL
  - HMI LOCAL
  - DEVICE COMB FAIL
- NORMAL 

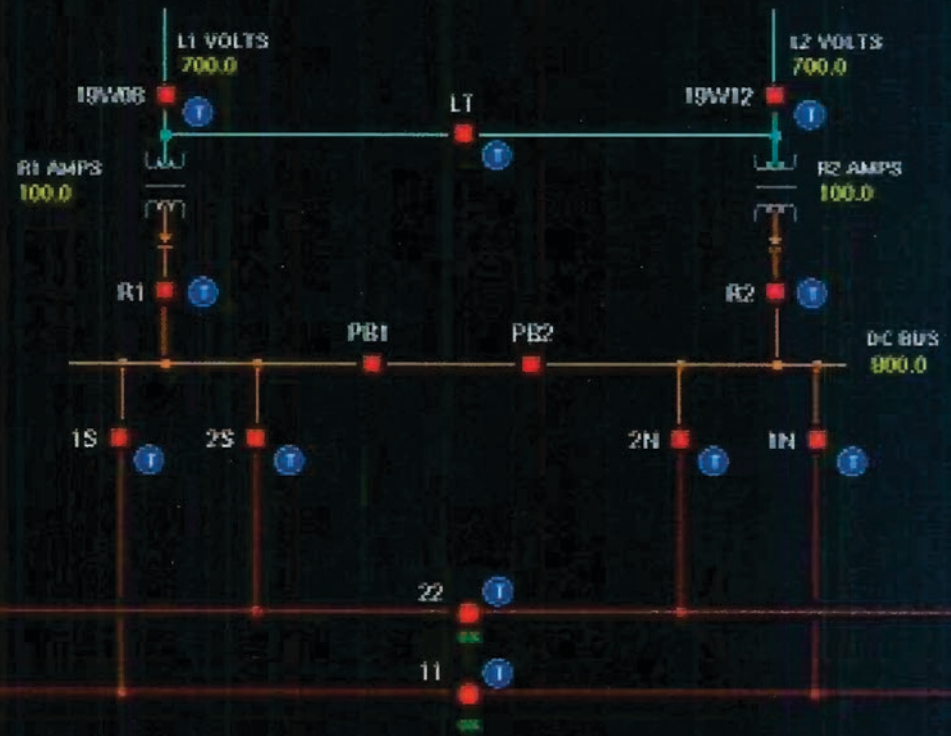
ALTERNATE 

1 26 RTU 

BATTERY: 130.0

New RTU B26A

- RECTIFIER ALARMS R1 2
- LOCAL
  - TROUBLE
  - SFMR TROUBLE
  - FRAME GROUNDED
  - FRAME ALIVE
  - LR 86-1 ACTIVATED
  - LR 86-2 ACTIVATED
- DC SWGEAR ALARMS R1 2
- FRAME GROUNDED
  - FRAME ALIVE
  - LR 86-1 ACTIVATED



Postaccident View of the power Controller's Display for B-26 Substation Circuits

TAB

01/30/15 14:51:40 SYSTEM TERMINATION INITIATED



◀ B 26A    **B 29 A**    B 32A ▶

# B 29 A THORNWOOD

PHONE: (502) 8406  
(914) 686 8406  
HTV 4757

FIRE	█	NORMAL	DOWN
ENTRY	█	ALTERNATE	DOWN
LOCAL	█	6:29 RTU	UP
TROUBLE	█	BATTERY :	130.0
CHARGER FAIL	█		
HMI LOCAL	█		
DEVICE COMM FAIL	█		

**NOTE: This is  
NEW RTU B29A**

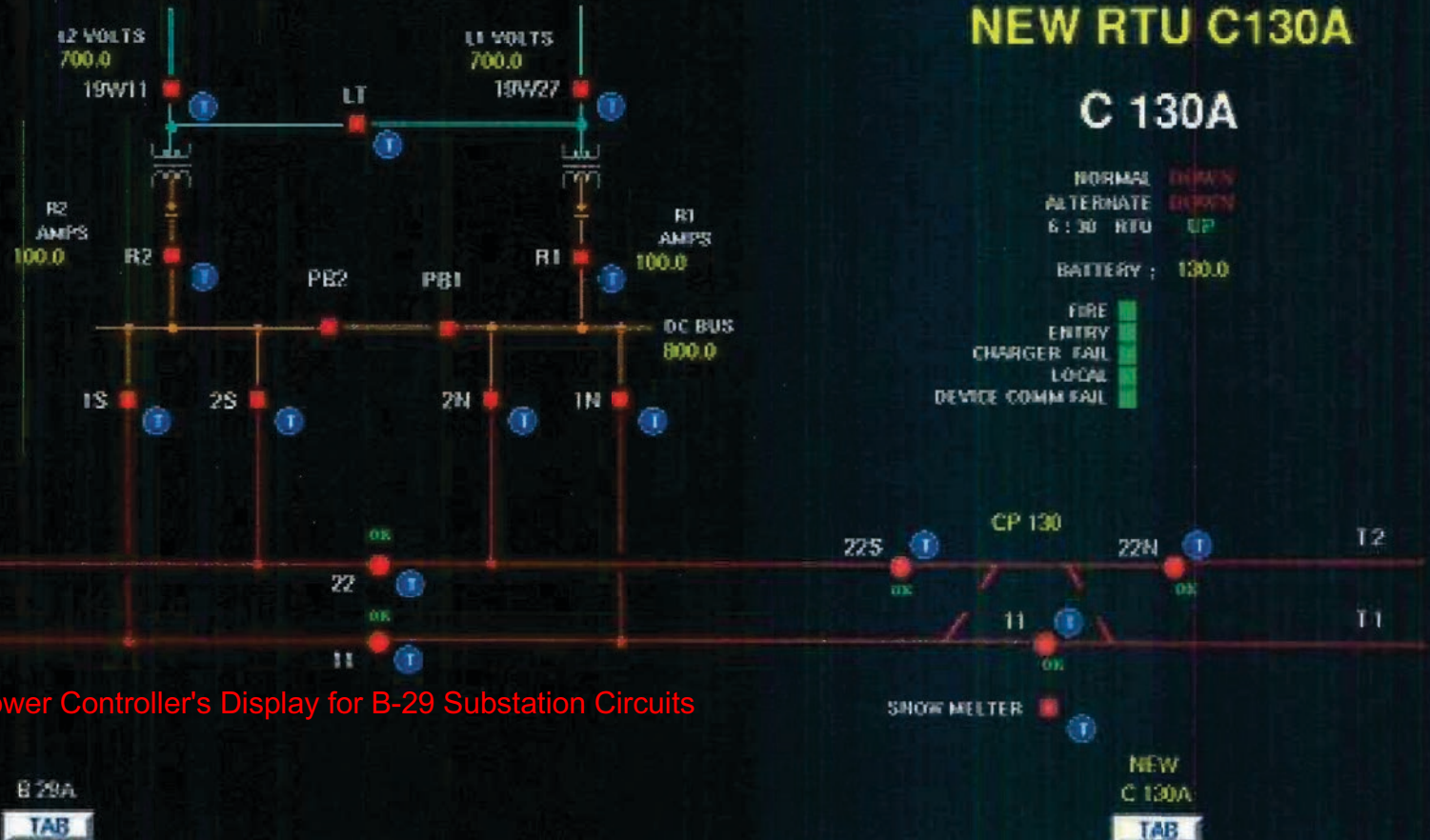
## NEW RTU C130A

### C 130A

NORMAL	DOWN
ALTERNATE	DOWN
6:30 RTU	UP
BATTERY :	130.0

FIRE	█
ENTRY	█
CHARGER FAIL	█
LOCAL	█
DEVICE COMM FAIL	█

- |                      |      |
|----------------------|------|
| RECTIFIER ALARMS     | R1 2 |
| LOCAL                | █    |
| TROUBLE              | █    |
| XFMR TROUBLE         | █    |
| AC FAIL              | █    |
| UNDERVOLT            | █    |
| EMERGENCY TRIP       | █    |
| DIODE TEMP           | █    |
| DIODE FAIL           | █    |
| OVERCURRENT          | █    |
| FRAME GROUNDED       | █    |
| FRAME ALIVE          | █    |
| SURGE PROTECT        | █    |
| LOCKOUT RELAY 1 FAIL | █    |
| LOCKOUT RELAY 2 FAIL | █    |
| LR 06-1 ACTIVATED    | █    |
| LR 06-2 ACTIVATED    | █    |
| DC SWGEAR ALARMS     | 1 2  |
| FRAME GROUNDED       | █    |
| FRAME ALIVE          | █    |
| LR 06-1 ACTIVATED    | █    |



Postaccident View of the Power Controller's Display for B-29 Substation Circuits

01/30/15 14:51:40 SYSTEM TERMINATION INITIATED