

LOC I-STS 109.3	APP CRS 321°	Rwy Idg TDZE Apt Elev	6000 122 129
---------------------------	------------------------	-----------------------------	---

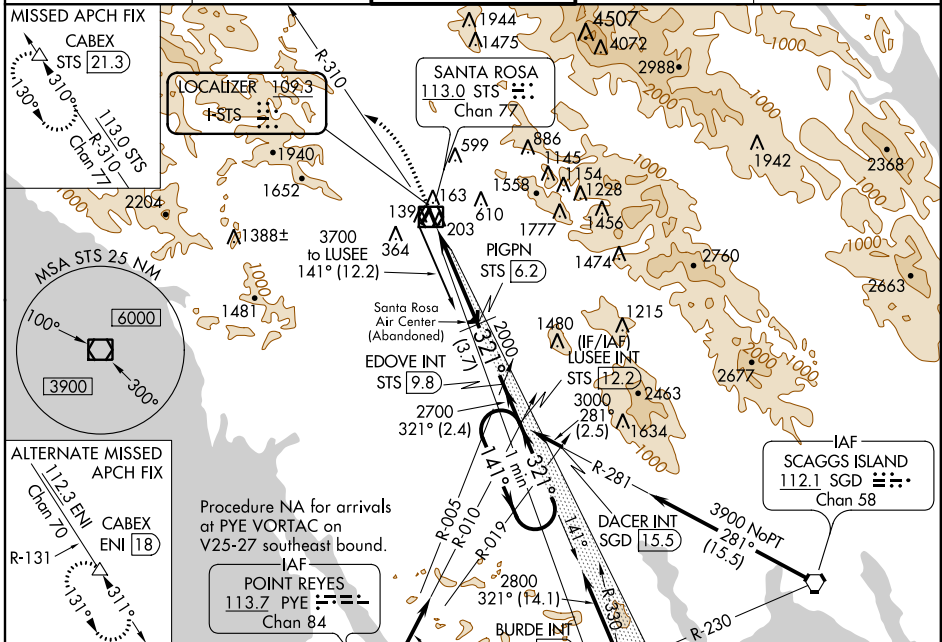
ILS or LOC/DME RWY 32

CHARLES M. SCHULZ-SONOMA COUNTY (STS)

▽ DME required. When local altimeter setting not received, use Petaluma altimeter setting and increase all DA to 423 feet and all MDA 40 feet and S-LOC 32 visibility Cats C and D 1/8 mile.

△ MALSR MISSED APPROACH: Climb to 1020 on STS VOR/DME R-310 and climbing left turn to 6000 to CABEX/STS 21.3 DME and hold, continue climb-in-hold to 6000.

ATIS 120.55	OAKLAND CENTER 127.8 353.5	SANTA ROSA TOWER* 118.5 (CTAF) 0 363.0	GND CON 121.9	UNICOM 122.95
-----------------------	--------------------------------------	--	-------------------------	-------------------------



ELEV 129	D	TDZE 122
----------	----------	----------

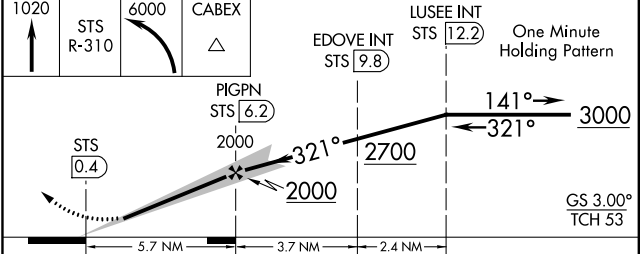
TWR 201

A 270±

A 157±

A 247±

REIL Rwy 14
MIRL Rwy 2-20
HIRL Rwy 14-32



CATEGORY	A	B	C	D
S-ILS 32	377/24 255 (300-1/2)			
S-LOC 32	580/24	458 (500-1/2)	580/45	458 (500-3/4)
C CIRCLING	600-1 471 (500-1)	680-1 551 (600-1)	1080-3 951 (1000-3)	1420-3 1291 (1300-3)

SW-2, 07 JAN 2016 to 04 FEB 2016

SW-2, 07 JAN 2016 to 04 FEB 2016