

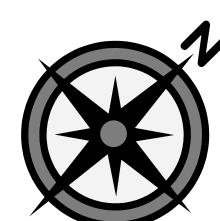
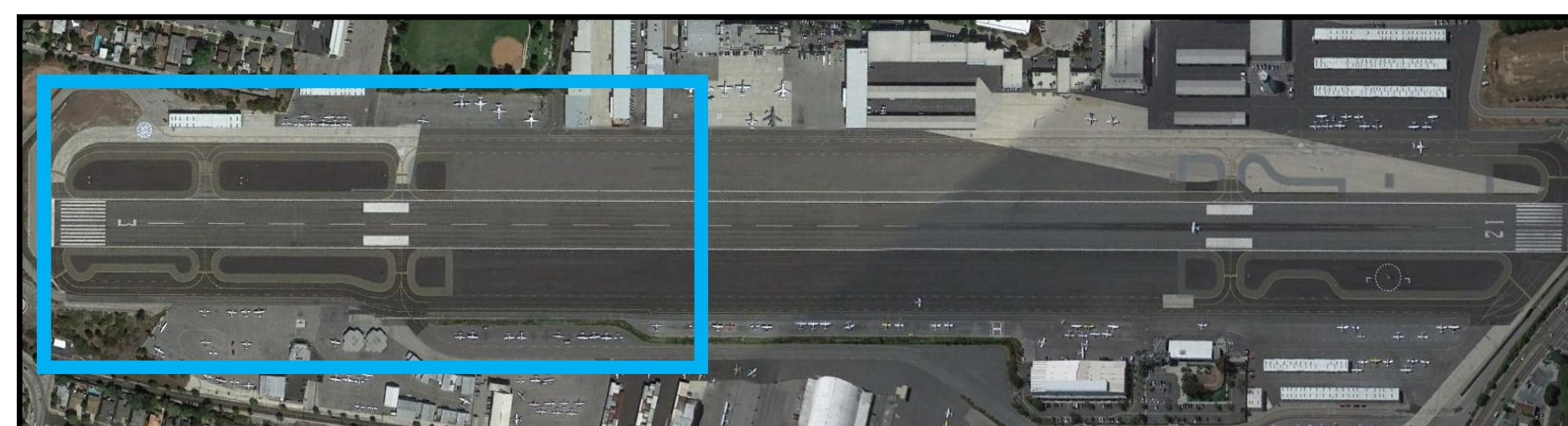


September 29, 2013

Santa Monica Municipal Airport, Santa Monica, California

Cessna 525A Citation, N194SJ

WPR13FA430



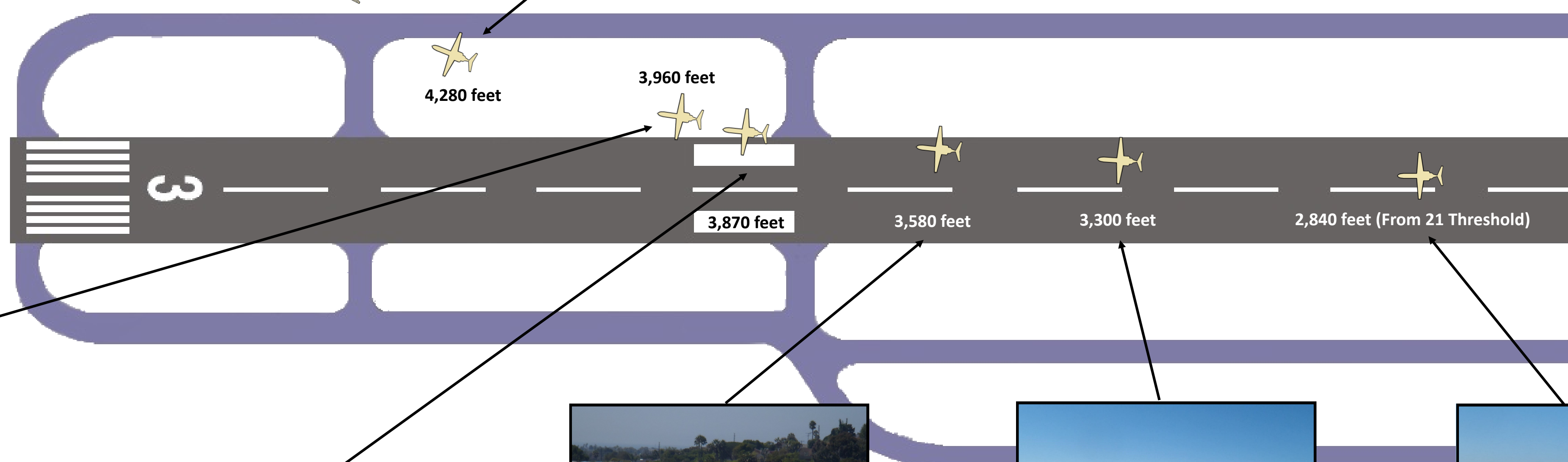
(F2) Black transfer marks for all tires leading to the main wreckage

4,430 feet

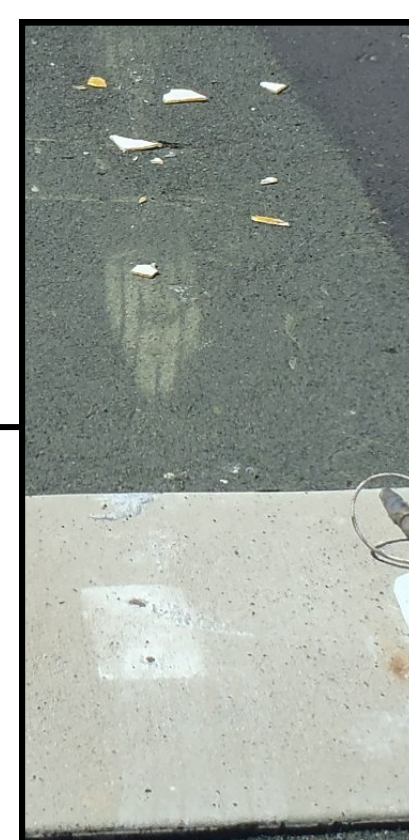
- Right Main Landing Gear
- Left Main Landing Gear
- Nose Landing Gear



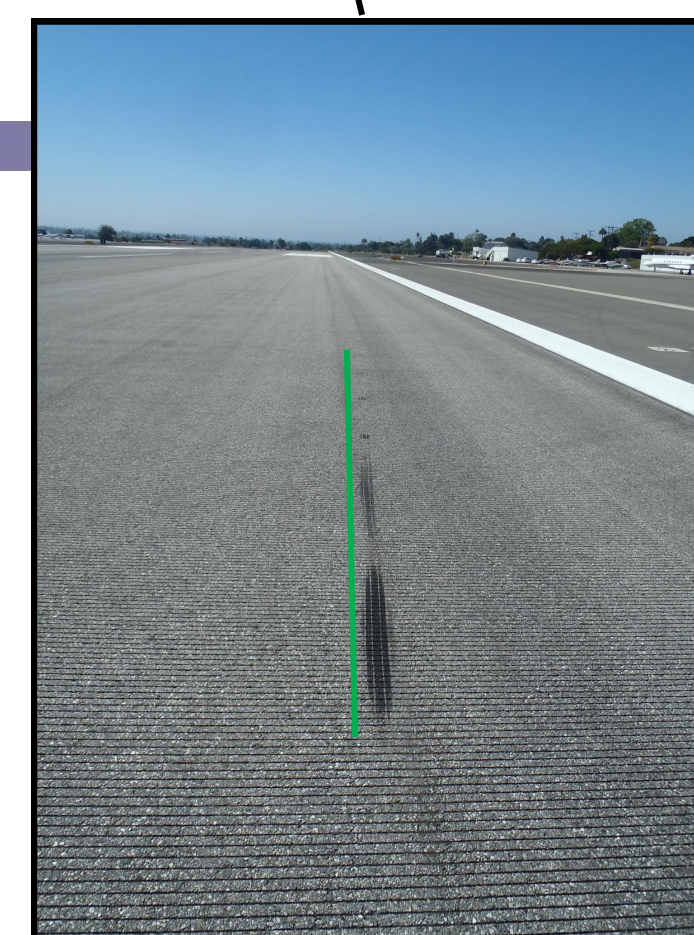
(F1) Black transfer marks, each with 5 treads of the right main landing gear tire, with scuff marks to the runway corresponding to the nose and left main landing gear tires.



(D) Five tread marks from the right main landing gear tire beyond the remnants of a taxiway sign. Light scuffing of tarmac surface created by left main landing gear tire



Light scuffing on the runway border displaying 5 treads of the right main landing gear tire.



(B) Five distinct black transfer marks, each revealing 3 treads of the right main landing gear tire.



(A) First indication of landing gear ground contact. Light black transfer mark about 64-inches-long, consisting of 3 treads from the right main landing gear tire.

