



Photo 1 – Pre-accident photo of N60RK, a Beech 60 Duke.



Photo 2 – N60RK, uncontrollable descent, on fire, in flight.



Photo 3 – The overall accident scene.



Photo 4 – Overall view of the wreckage.



Photo 5 – The right engine and impact marks.



Photo 6 – The right engine. Note propeller is feathered.



Photo 7 – Thermal damage to underside of right engine nacelle.

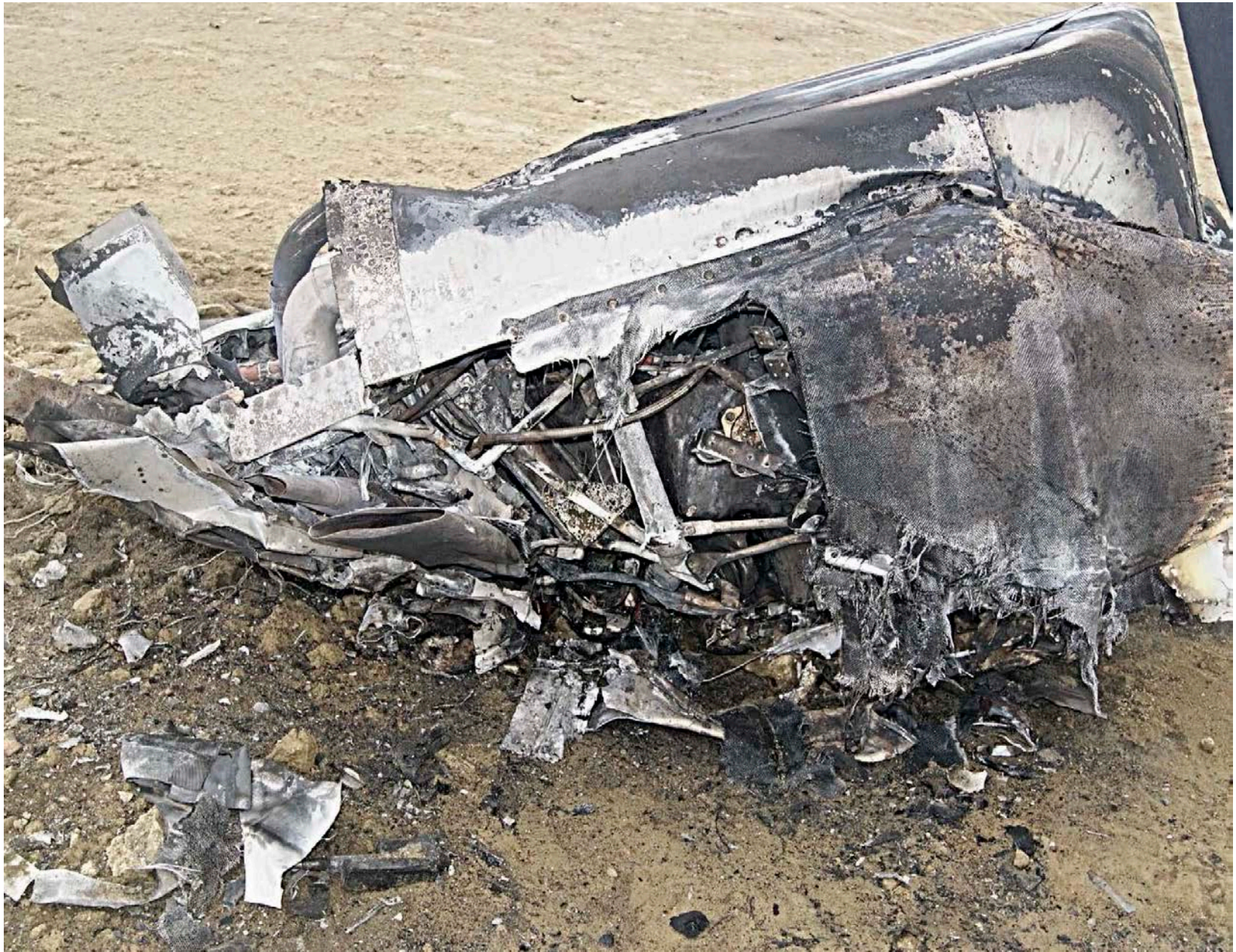


Photo 8 – Thermal damage to right rear area of right engine.



Photo 9 – The left engine.



Photo 10 – The power quadrant.



Photo 11 - Right wing leading edge. Vertical stabilizer and rudder are in background.



Photo 12 – Right engine fuel selector positioned on the right main tank.



Photo 13 - Left engine fuel selector positioned on the left main tank.



Photo 14 - Fuel lines going into and out of the fuel pump.



Photo 15 – Fuel pump discharge after line removal.



Photo 16 - Another view of the fuel pump discharge after line removal.



Photo 17 - Fuel pump discharge line. Note carbon deposits.