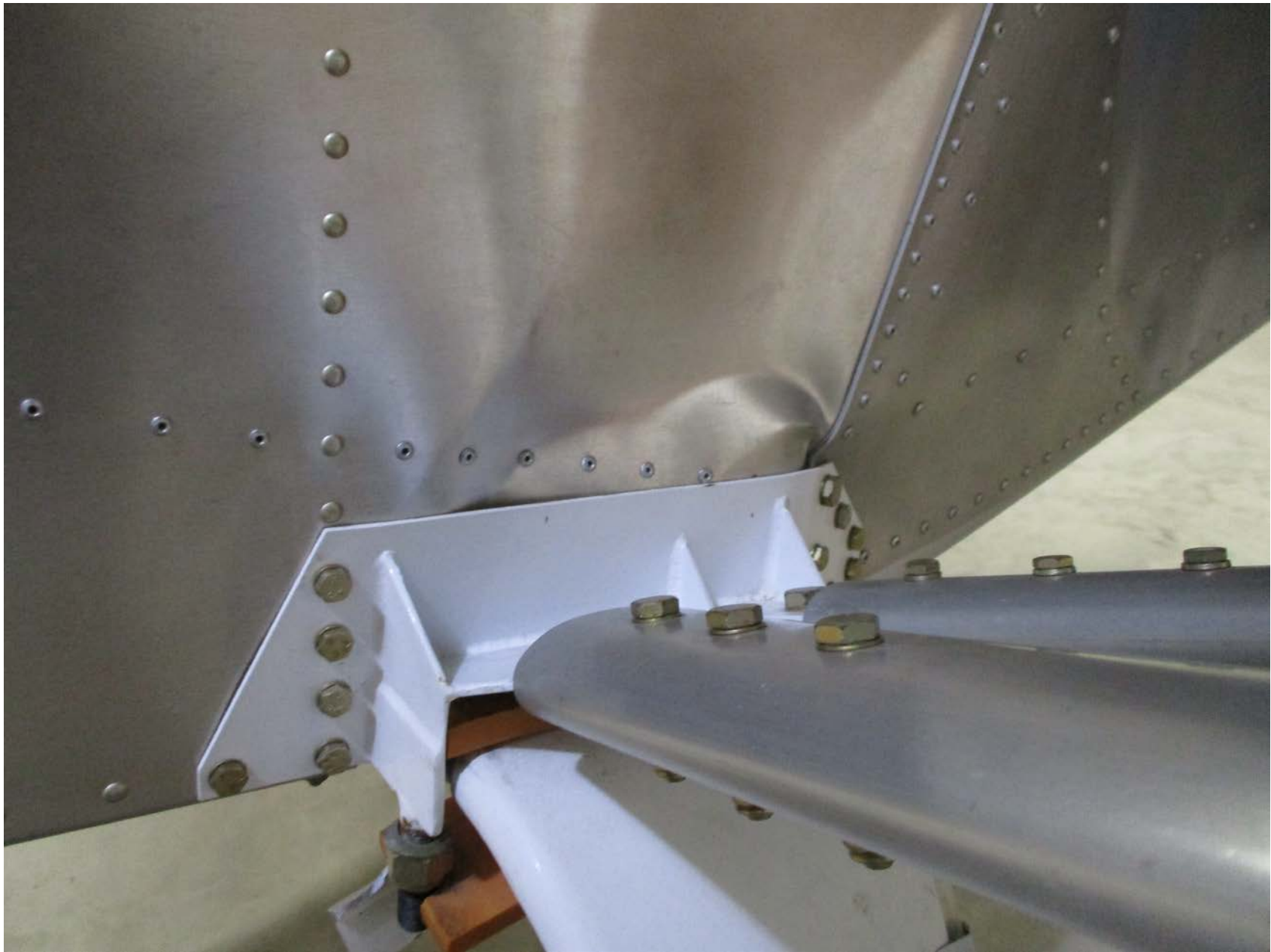




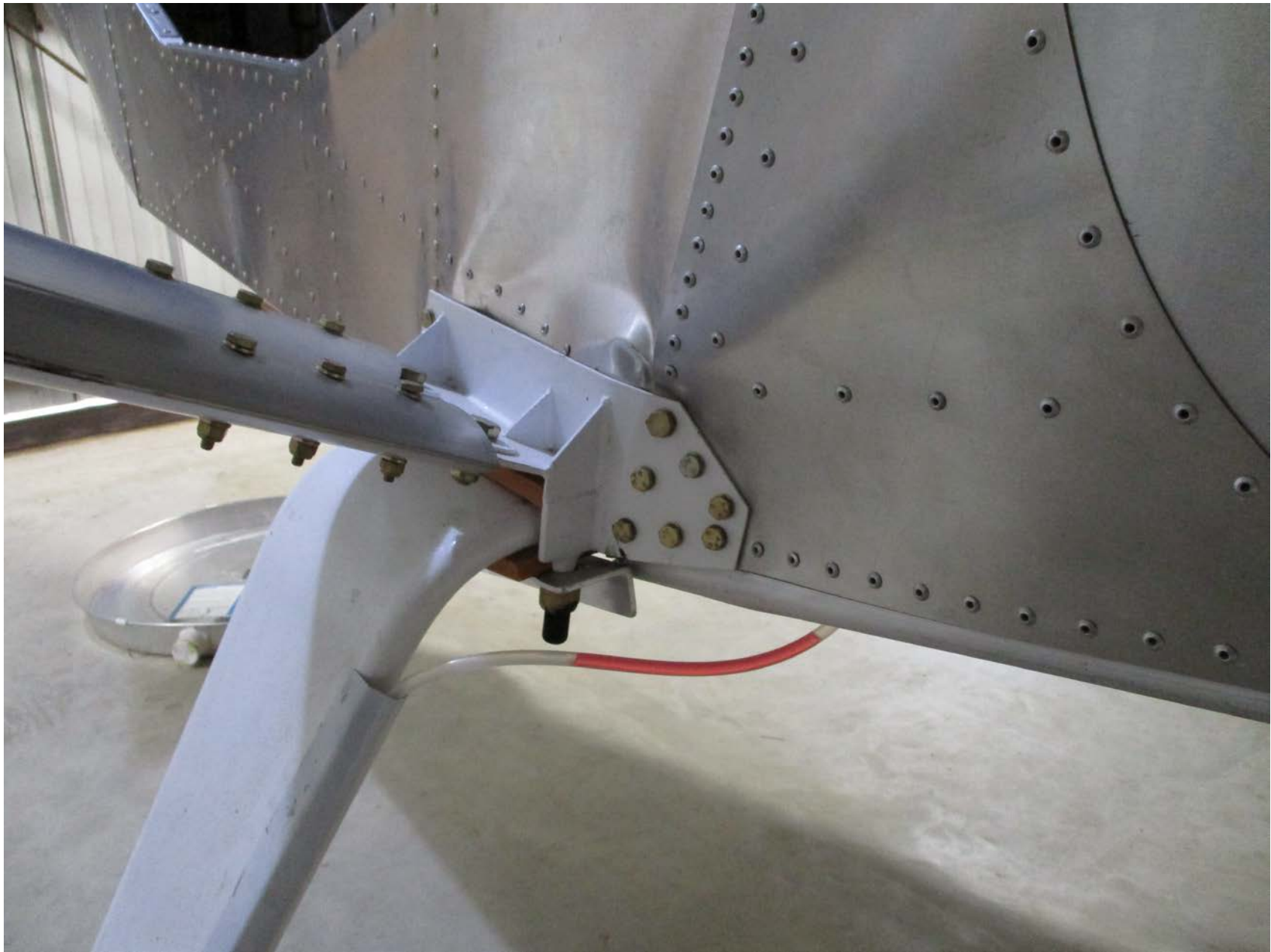
**Photo 1 – Left wing tip damage (FAA photo)**



**Photo 2 - Nose landing gear folded the “U” channel is supposed to be strait not a 90 degree bend (FAA photo)**



**Photo 3 - Left wing strut attachment point. Note skin buckling (FAA photo)**



**Photo 4 – Left main landing gear and wing strut attachment. Note skin buckling (FAA photo)**