

Prepared by
NATIONAL TRANSPORTATION SAFETY BOARD
 Office of Aviation Safety (AS-30)
 Air Traffic Investigations

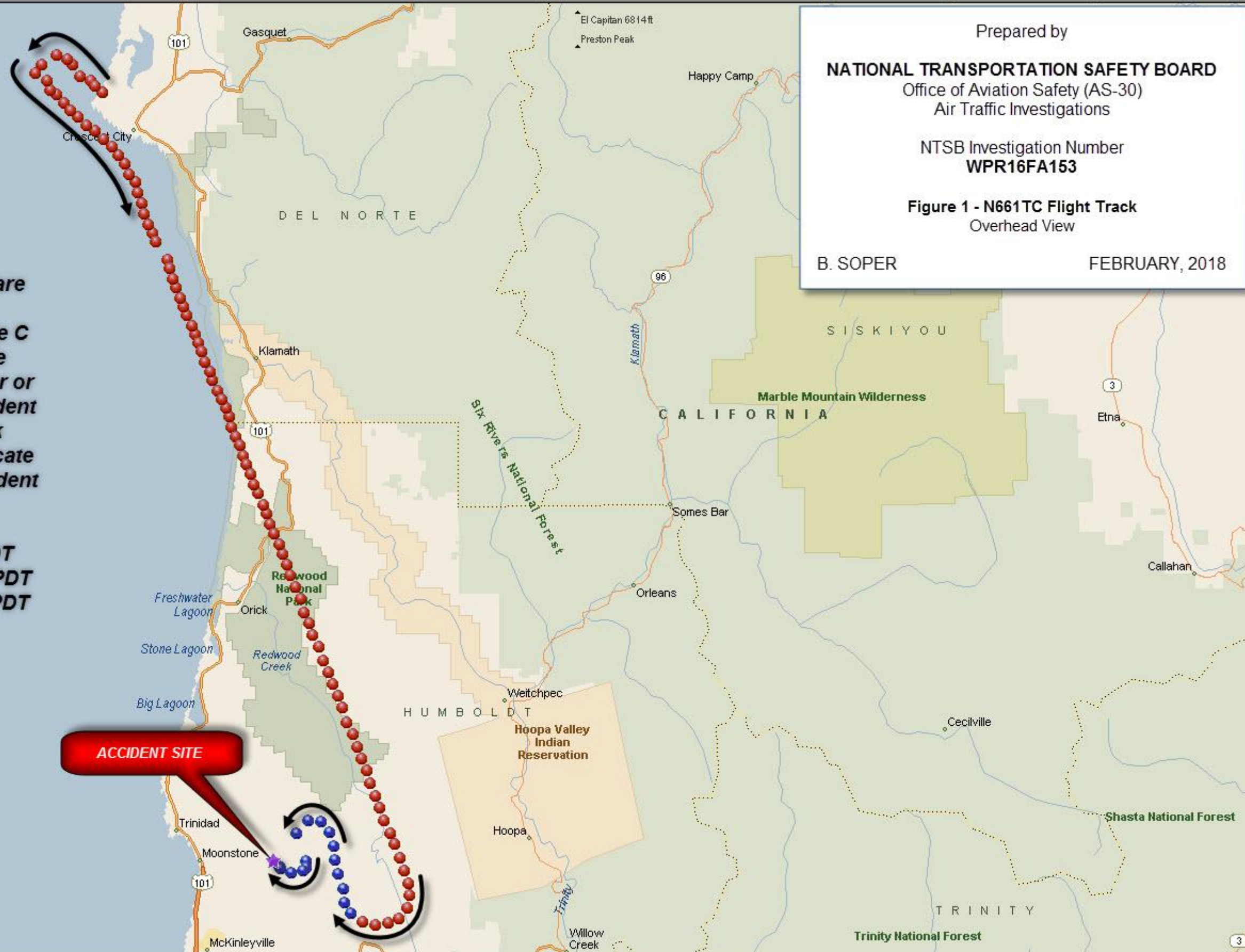
NTSB Investigation Number
WPR16FA153

Figure 1 - N661TC Flight Track
 Overhead View

B. SOPER FEBRUARY, 2018

In this flight track plot, the targets illustrated in red are beacon and/or reinforced targets that included associated transponder information, including Mode C altitude information. Targets illustrated in blue are primary only returns, with no associated transponder or altitude information, but are coincident with the accident flight track and location of the accident site. Black arrows are for informational purposes only and indicate the direction of flight during that segment of the accident flight track.

Last recorded target with transponder - 0059:26 PDT
First recorded target without transponder - 0059:38 PDT
Last recorded target without transponder - 0102:50 PDT



ACCIDENT SITE