

Prepared by

NATIONAL TRANSPORTATION SAFETY BOARD

Office of Aviation Safety (AS-30)

Air Traffic Investigations

NTSB Investigation Number

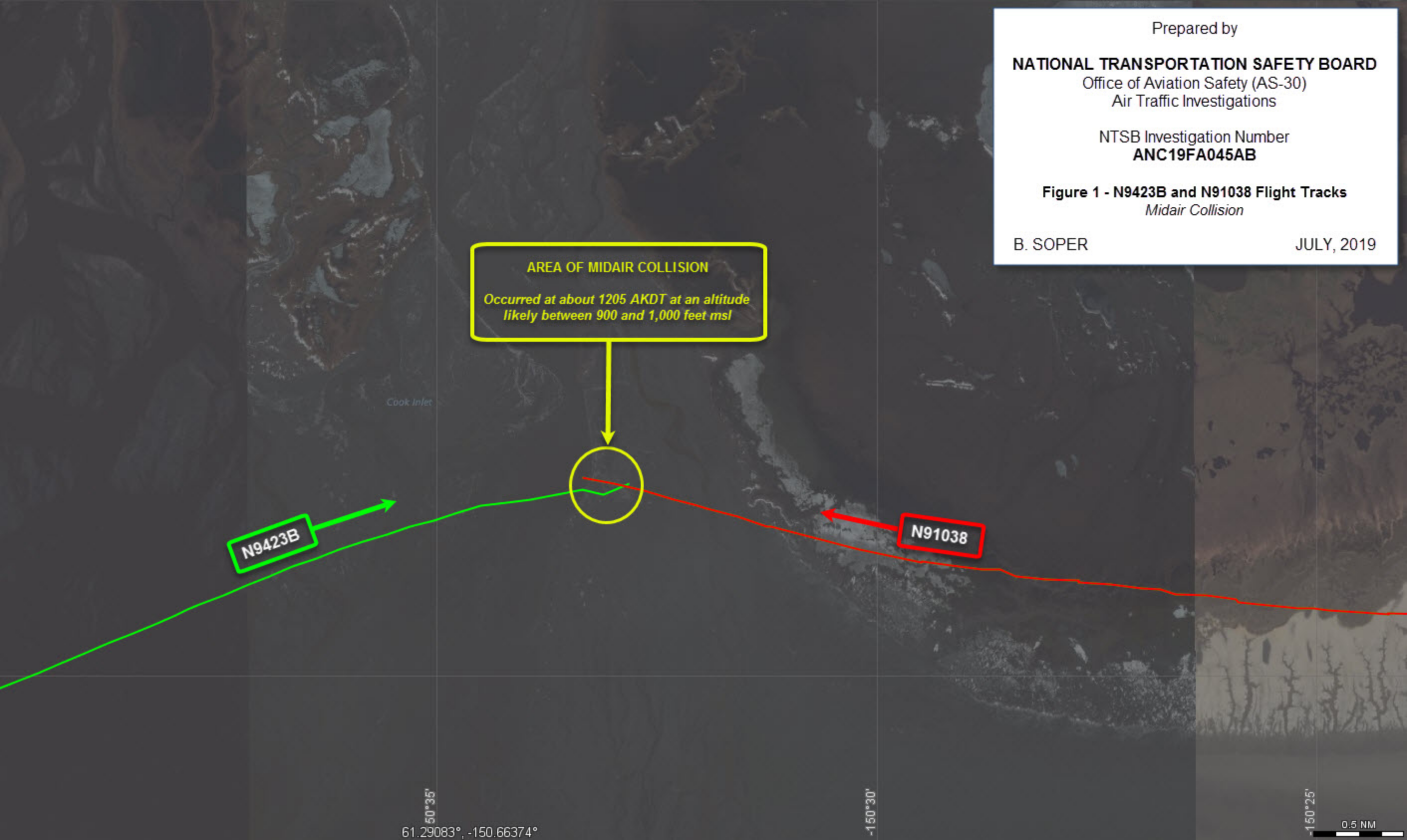
ANC19FA045AB

Figure 1 - N9423B and N91038 Flight Tracks

Midair Collision

B. SOPER

JULY, 2019



AREA OF MIDAIR COLLISION

Occurred at about 1205 AKDT at an altitude likely between 900 and 1,000 feet msl

N9423B

N91038

Cook Inlet

50°35'
61.29083°, -150.66374°

-150°30'

-150°25'

0.5 NM