

Maryland-Ave

Batesville Pike

Initial Impact

Main Wreckage
Left Engine

W Maryland Ave

Rotor Way

Aviation Way

Remount Rd

17

© 2018 Google

W Kiehl Ave

Mayfair Cove

Tabor Ave

Audubon Cove

Ghillwood Ln

Tikaye Ln

Tiffany Ct

Looper Rd

Robin Glen Dr

Parkdale Rd

W Woodruff Ave

Reeves Rd

Stainaker Dr

13:29:43 (800 ft msl)

13:29:48 (800 ft msl)

13:29:53 (800 ft msl)

13:29:58 (800 ft msl)

13:30:02 (800 ft msl)

13:30:07 (800 ft msl)

13:30:12 (800 ft msl)

13:30:17 (800 ft msl)

13:30:22 (700 ft msl)

13:30:27 (700 ft msl)

13:30:31 (800 ft msl)

13:30:36 (800 ft msl)

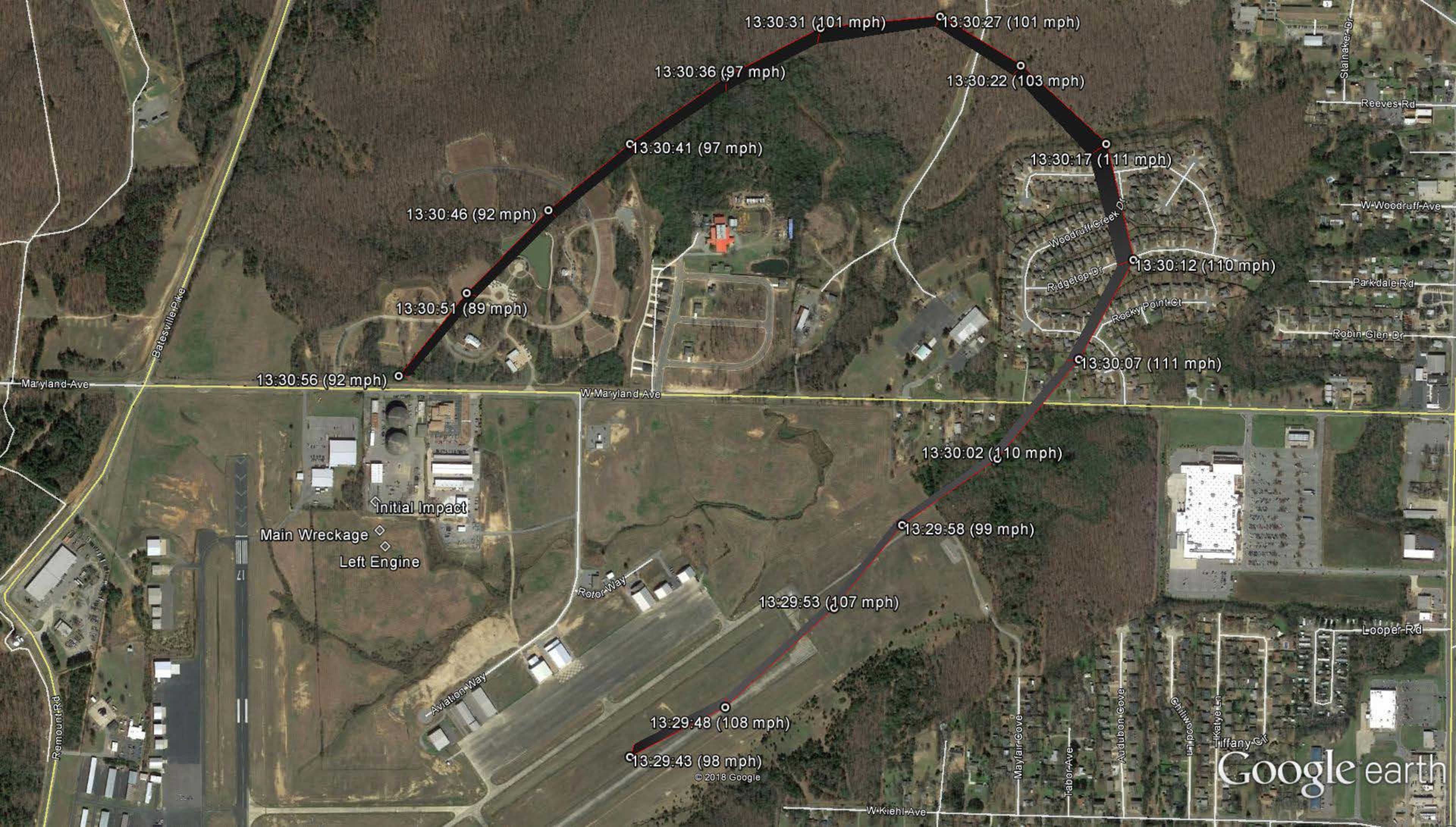
13:30:41 (800 ft msl)

13:30:46 (800 ft msl)

13:30:51 (800 ft msl)

13:30:56 (800 ft msl)

Google earth



CEN16FA172 -- North Little Rock, AR -- Cessna 310F, N6770X

Calculated Airspeeds, Based on Radar Track Data

