

Nenita

SID 5380

SOG 8

spkr

HDG 2

ROT R

ROTI R

XTrk R

From: center line

Cur reach Unna

Next WPT 23 - Rockland

Track Dist

Bearing 2

TTG

This

Next Course 2

Status Rng/Brg ETA

DGPS No SVs

HDOP n/a Age

Src vdm0 Mtb

Playback - C:\USERS\RIVER\DOWNLOADS\NENITA (2).LOG

Stop [] Resume

Start line 3034

Pause at 0

Skip interval (sec) 0

Delay Rate (seconds)

None 0.100

1.0 Realtime

5.0 x 1.00

Add to Buffer

0

Add Empty

Gradient

Limit playback to

AIS Msg Types: 0xFFFFFFFF

Lines Containing

Selected contact/base only

Bookmarked contacts only

In view only (re-check to re-set)

From 11/19/2016 13:14

To 11/19/2016 13:14

Repeat Playback continuously

Other options

Auto-advance through month/year

Pause at end of current file

Don't age out station data

Export to log file(s)

Export to .csv file

Export to SQL import file

Make snapshots from PB data

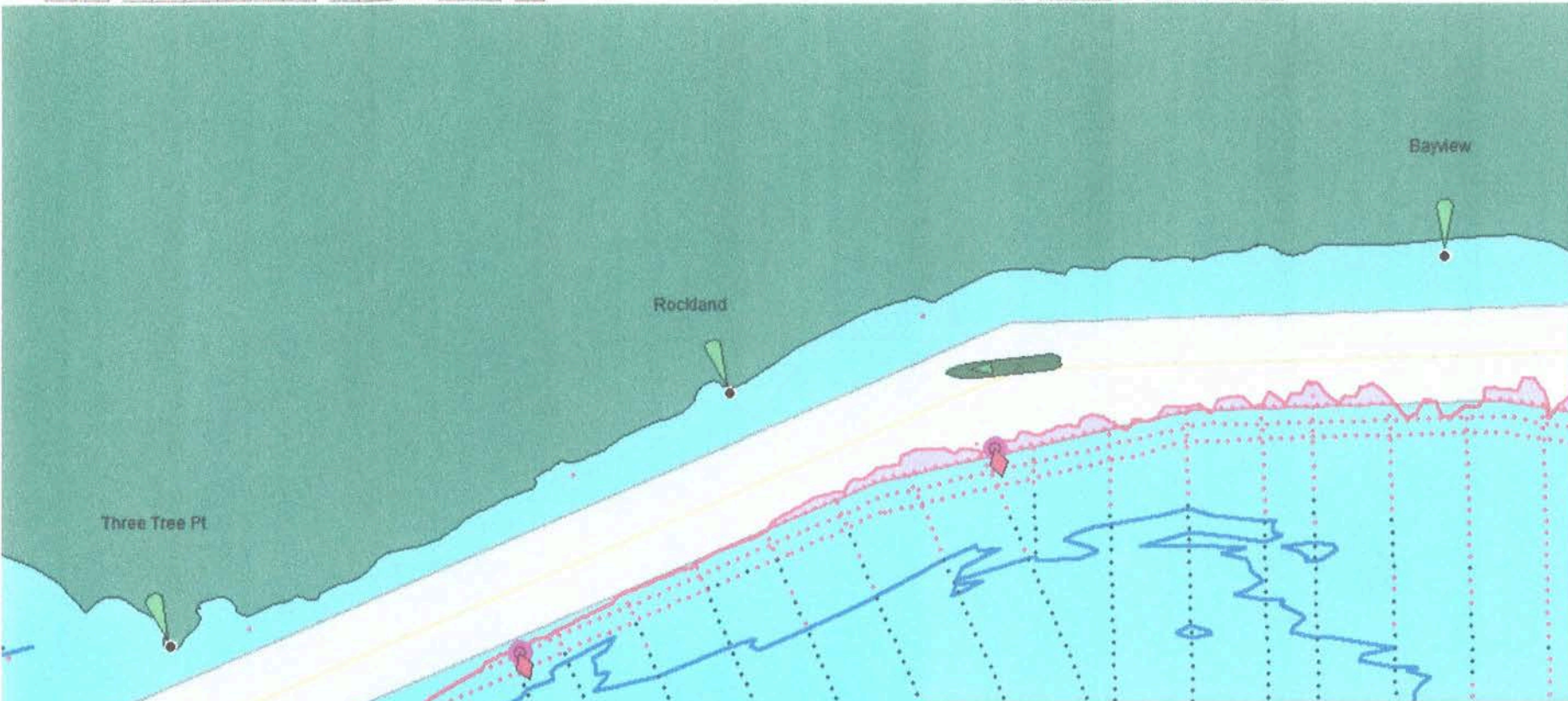
Write summary stats

Use Inner TimeStamp for TOP

Options 02

Standard Times

Waypoint N	Dist
Tongue Point	12.1 nm
Altoona Jelly	6.4 nm
Three Tree Pt	1.0 nm
Skamokawa	
Westport Slo...	
Waterford No...	
Abernathy Pt	
Longview Bri...	
Collin Rock	
Columbia City	
Henric Lt 10	
Kelley Pt	



Nenita

SID 5380

SOG 8

spkr

HDG 20

ROT L720

ROTI

XTrk R

From: center line

Cur reach Unna

Next WPT 22 - Three Tr

Track Dist

Bearing 2

TTG

This

Next > Course 2

Status Rng/Brg ETA'

DGPS No SVs

HDDP n/a Age

Src vdm0 Mrb

Playback - C:\USERS\RIVER\DOWNLOADS\NENITA (2).LOG

Stop [] Resume

Start line 3376

Pause at 0

Skip interval [sec] 0

Delay Rate (seconds)

None 0.100

1.0 Realtime

5.0 x 1.00

Play Next Now

Add to Buffer

0

Add Empty

Gradient

Limit playback to

AIS Msg Types: 0xFFFFFFFF

Lines Containing

Selected contact/base only

Bookmarked contacts only

In view only (re-check to re-set)

From 11/19/2016 13:14

To 11/19/2016 13:14

Repeat Playback continuously

Other options

Auto-advance through month/year

Pause at end of current file

Don't age out station data

Export to .log file(s)

Export to .csv file

Export to SQL import file

Make snapshots from PB data

Write summary stats

Use Inner TimeStamp for TOP

Options 02

Standard Times

Waypoint N	Dist
Tongue Point	11.9 nm
Altoona Jetty	6.3 nm
Three Tree Pt	5563 ft
Skamokawa	
Westport Slo...	
Waterford No...	
Abernathy Pt	
Longview Bri...	
Collin Rock	
Columbia City	
Henri Lt 10	
Kelley Pt	

3

Nenita

SID 5380

SOG 7

spkr

HDG 24

ROT L720

ROTI

XTrk R 1

From: center line

Cur reach Unna

Next WPT 22 - Three Tr

Track Dist 4

Bearing 2

TTG

This

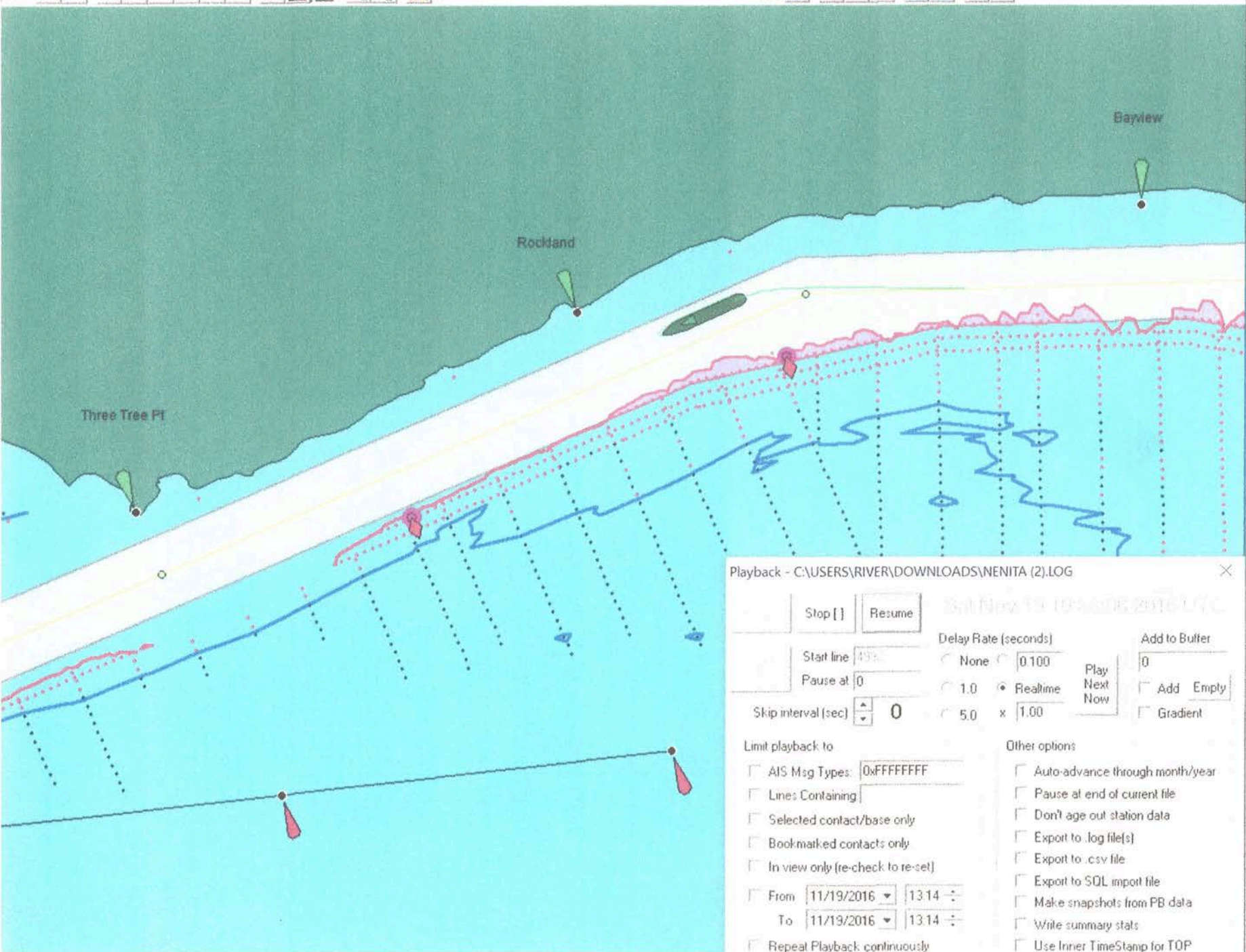
Next > Course 2

Status Rng/Brg ETA'

DGPS No SVs

HDOP n/a Age

Src vdm3 Mib



Playback - C:\USERS\RIVER\DOWNLOADS\NENITA (2).LOG

Stop [] Resume

Start line 43%

Pause at 0

Skip interval (sec) 0

Delay Rate (seconds)

None 0.100

1.0 Realtime

5.0 x 1.00

Add to Buffer

0

Add Empty

Gradient

Limit playback to

AIS Msg Types: 0xFFFFFFFF

Lines Containing

Selected contact/base only

Bookmarked contacts only

In view only (re-check to re-set)

From 11/19/2016 13:14

To 11/19/2016 13:14

Repeat Playback continuously

Other options

Auto-advance through month/year

Pause at end of current file

Don't age out station data

Export to .log file(s)

Export to .csv file

Export to SQL import file

Make snapshots from PB data

Write summary stats

Use Inner TimeStamp for TOP

Options... 02

Standard Times

Waypoint N...	Dist
Tongue Point	11.8 nm
Altoona Jetty	6.2 nm
Three Tree Pt	4808 ft
Skamokawa	
Westport Slo...	
Waterford No...	
Abernathy Pt	
Longview Br...	
Coffin Rock	
Columbia City	
Henric Lt 10	
Kelley Pt	

4

Nenita

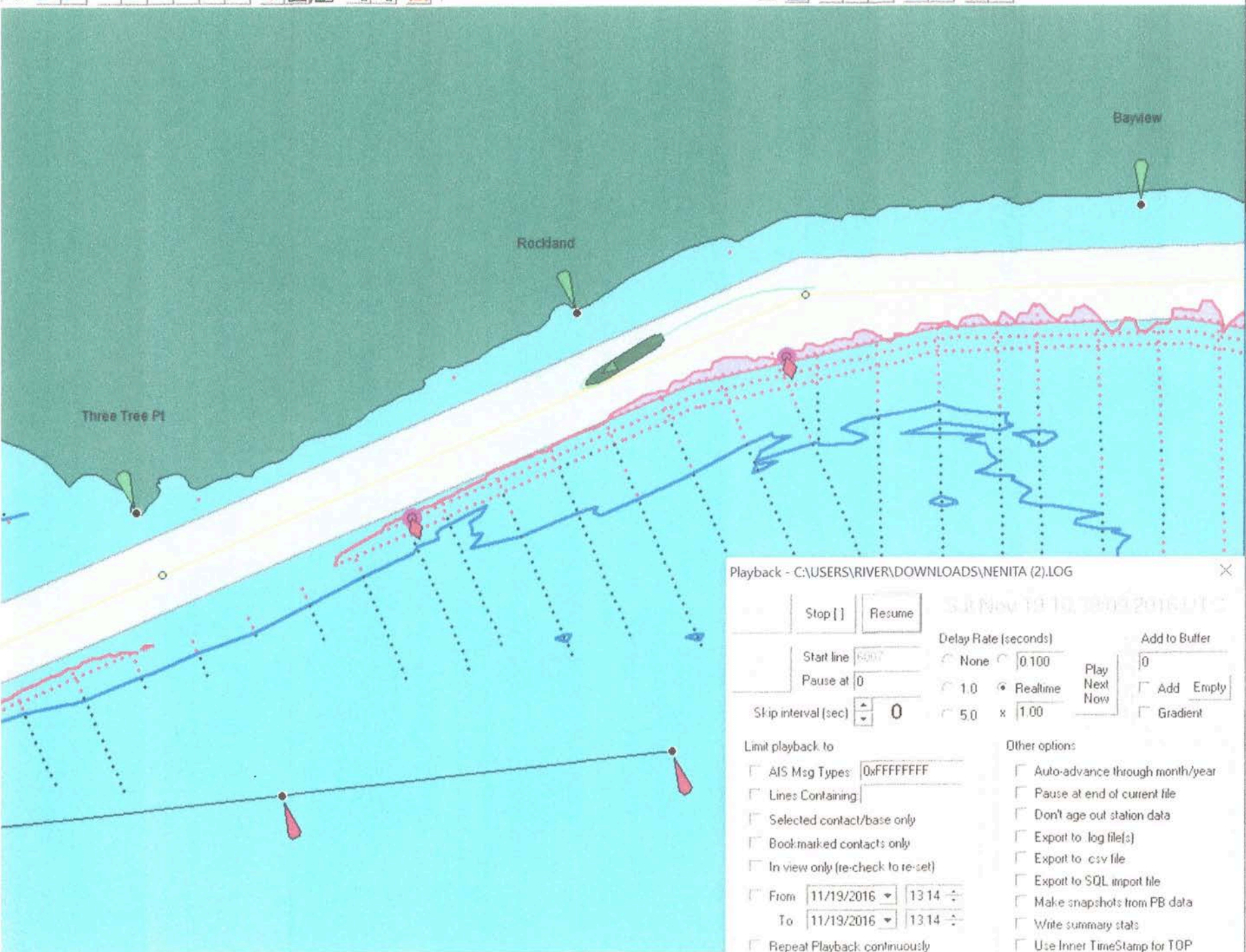
SID 5380
 SOG 6
 spr
 HDG 2
 ROT R
 ROTI R
 XTrk R

From: center line
 Cur reach Unna
 Next WPT 22 - Three Tr
 Track Dist 4
 Bearing 2
 TTG
 This
 Next > Course 2
 Status Rng/Brg ETA
 DGPS No SVs
 HDOP n/a Age
 Src vdm3 Mrb

Options 02

Standard Times

Waypoint N	Dist
Tongue Point	11.7 nm
Altoona Jetty	6.0 nm
Three Tree Pt	4063 ft
Skamokawa	
Westport Slo...	
Waterford No...	
Abemathy Pt	
Longview Br...	
Coffin Rock	
Columbia City	
Henri Lt 10	
Kelley Pt	



Playback - C:\USERS\RIVER\DOWNLOADS\NENITA (2).LOG

Stop [] Resume

Start line 5907
 Pause at 0

Skip interval (sec) 0

Delay Rate (seconds)
 None 0.100 Realtime 1.0 5.0 x 1.00

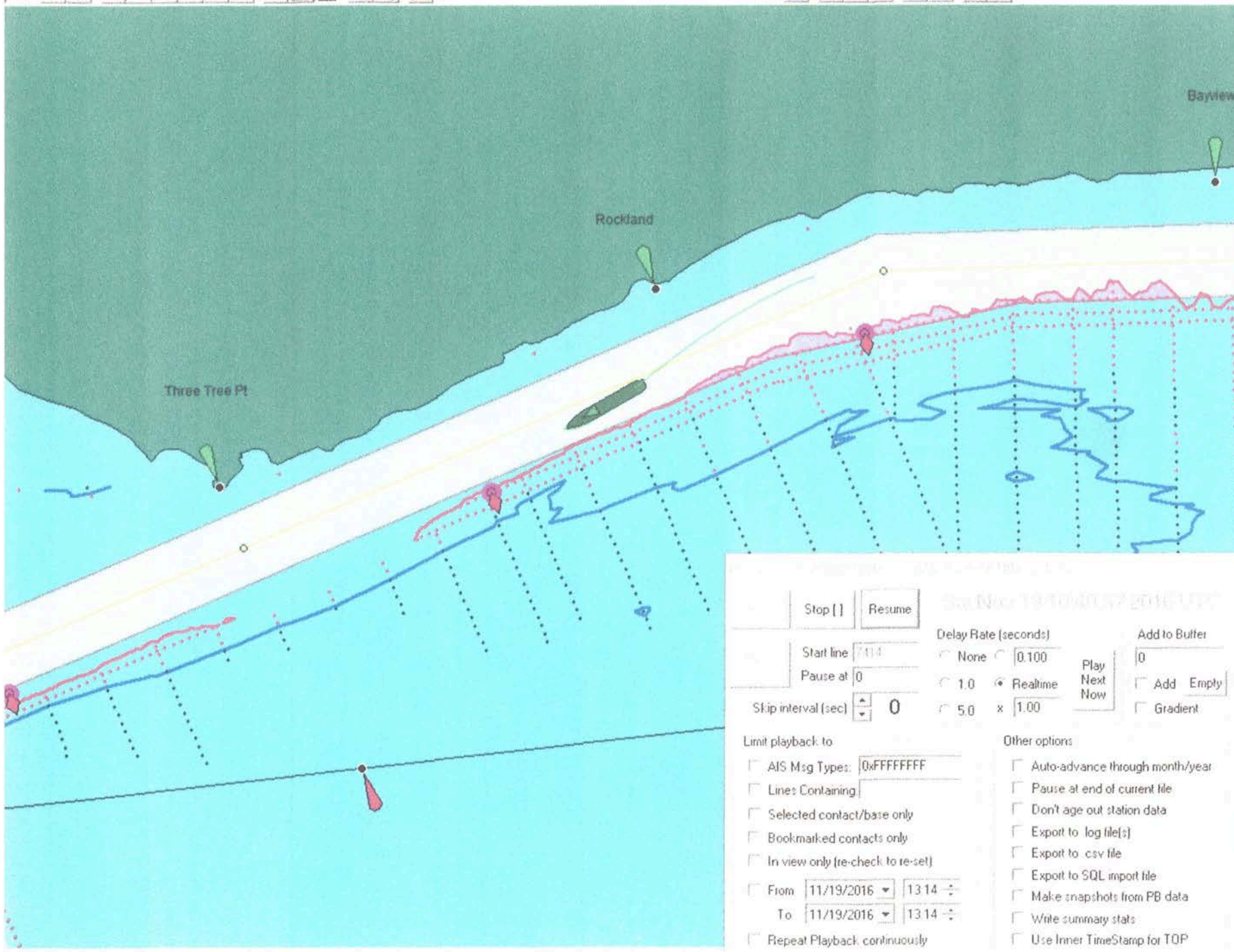
Add to Buffer
 0
 Add Empty Gradient

Play Next Now

Limit playback to
 AIS Msg Types: 0xFFFFFFFF
 Lines Containing:
 Selected contact/base only
 Bookmarked contacts only
 In view only (re-check to re-set)
 From: 11/19/2016 13:14
 To: 11/19/2016 13:14
 Repeat Playback continuously

Other options
 Auto-advance through month/year
 Pause at end of current file
 Don't age out station data
 Export to log file(s)
 Export to csv file
 Export to SQL import file
 Make snapshots from PB data
 Write summary stats
 Use Inner TimeStamp for TOP

5



Help

Nenita

SID 5380

SOG 6

spkr

HDG 2

ROT R

ROTI

XTrk L1

From: center line

Cur reach Unreached

Next WPT 22 - Three Tree Pt

Track Dist

Bearing 2

TTG

This

Next > Course 2

Status Rng/Brg ETA

DGPS No SVs

HDOP n/a Age

Src vdm3 Mib

Options 02

Standard Times

Waypoint Name	Dist
Tongue Point	11.5 nm
Altoona Jetty	5.9 nm
Three Tree Pt	3100 ft
Skamokawa	
Westport Slo...	
Waterford No...	
Abemathy Pt	
Longview Bri...	
Colfin Rock	
Columbia City	
Henri Lt 10	
Kelley Pt	

Stop [] Resume

Start line 7414

Pause at 0

Skip interval (sec) 0

Delay Rate (seconds)

None 0.100

1.0 Realtime

5.0 x 1.00

Add to Buffer

0

Add Empty

Gradient

Play Next Now

Limit playback to

AIS Msg Types: 0xFFFFFFFF

Lines Containing

Selected contact/base only

Bookmarked contacts only

In view only (re-check to re-set)

From 11/19/2016 13:14

To 11/19/2016 13:14

Repeat Playback continuously

Other options

Auto-advance through month/year

Pause at end of current file

Don't age out station data

Export to log file(s)

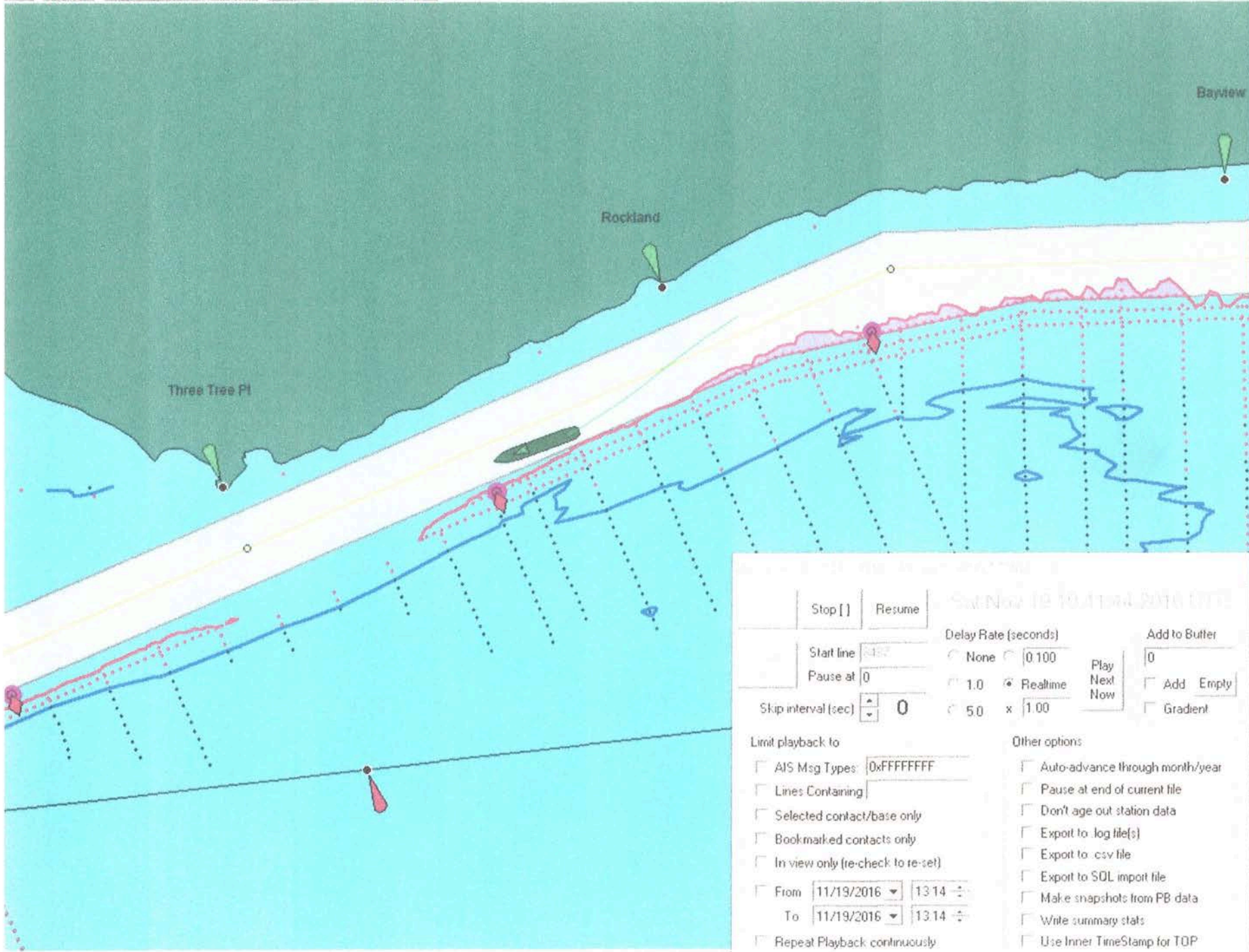
Export to csv file

Export to SQL import file

Make snapshots from PB data

Write summary stats

Use Inner TimeStamp for TOP



Nenita

SID 538
 SOG 5
 spkr
 HDG 2
 ROT R
 ROTI
 XTrk L 1

From: center line
 Cur reach Unn
 Next WPT 22 - Three T
 Track Dist
 Bearing 2
 TTG
 This
 Next > Course 2
 Status Rng/Big ETA
 DGPS No SVs
 HDOP n/a Age
 Src vdm3 Mrb

Stop [] Resume

Start line 3482
 Pause at 0
 Skip interval (sec) 0

Delay Rate (seconds)
 None 0.100 1.0 Realtime 5.0
 x 1.00

Add to Butler
 0
 Add Empty
 Gradient

Play Next Now

Limit playback to
 AIS Msg Types: 0xFFFFFFFF
 Lines Containing
 Selected contact/base only
 Bookmarked contacts only
 In view only (re-check to re-set)
 From 11/19/2016 13:14
 To 11/19/2016 13:14
 Repeat Playback continuously

Other options
 Auto-advance through month/year
 Pause at end of current file
 Don't age out station data
 Export to .log file(s)
 Export to .csv file
 Export to SQL import file
 Make snapshots from PB data
 Write summary stats
 Use Inner TimeStamp for TOP

Options 02
 Standard Times

Waypoint N...	Dis
Tongue Point	11.4 nr
Altoona Jetty	5.8 nr
Three Tree Pt	2403 f
Skamokawa	
Westport Slo...	
Waterford No...	
Abernathy Pt	
Longview Bri...	
Coffin Rock	
Columbia City	
Henri Lt 10	
Kelley Pt	

7

Nenita

SID 5380
 SOG 5
 spkr
 HDG 2
 ROT R
 ROTI R
 XTrk R

From: center line
 Cur reach Unna

Next WPT 22 - Three Tr
 Track Dist
 Bearing 2
 TTG
 This
 Next > Course 2

Status Rng/Brg ETA
 DGPS No SVs
 HDOP n/a Age
 Src vdm1 Mrb

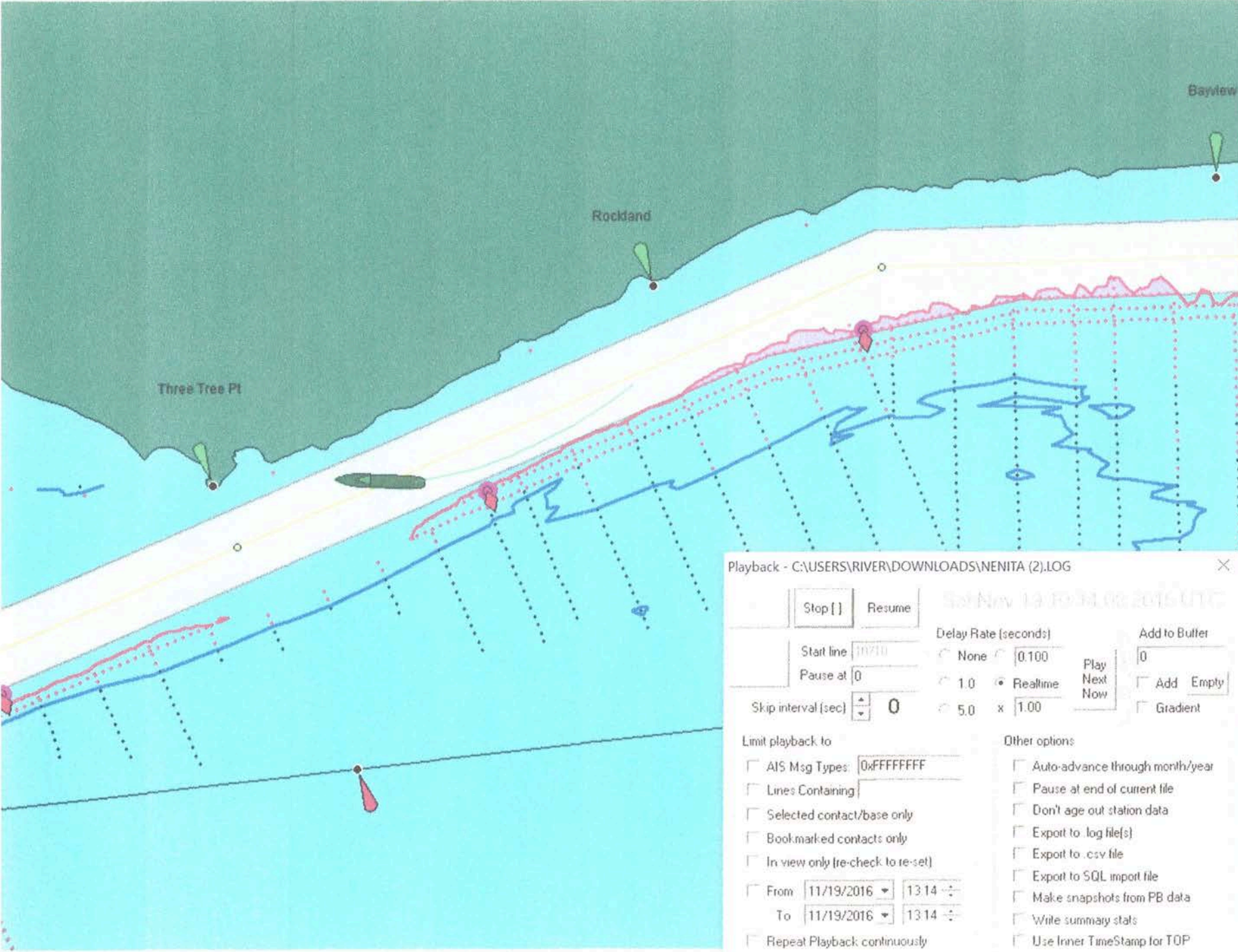
Options... 02

Standard Times

Waypoint N...	Dist
Tongue Point	11.2 nm
Altoona Jelly	5.6 nm
Three Tree Pt.	1187 ft
Sk-amokawa	
Westport Slo.	
Waterford No.	
Abernathy Pt	
Longview Bri.	
Collin Rock	
Columbia City	
Henric Lt 10	
Kelley Pt	

Home, Radar, Contacts, Navigation, Set Parameters, Get Feedback

Navigation toolbar with icons for Home, Radar, Contacts, Navigation, Set Parameters, Get Feedback, and various charting tools.



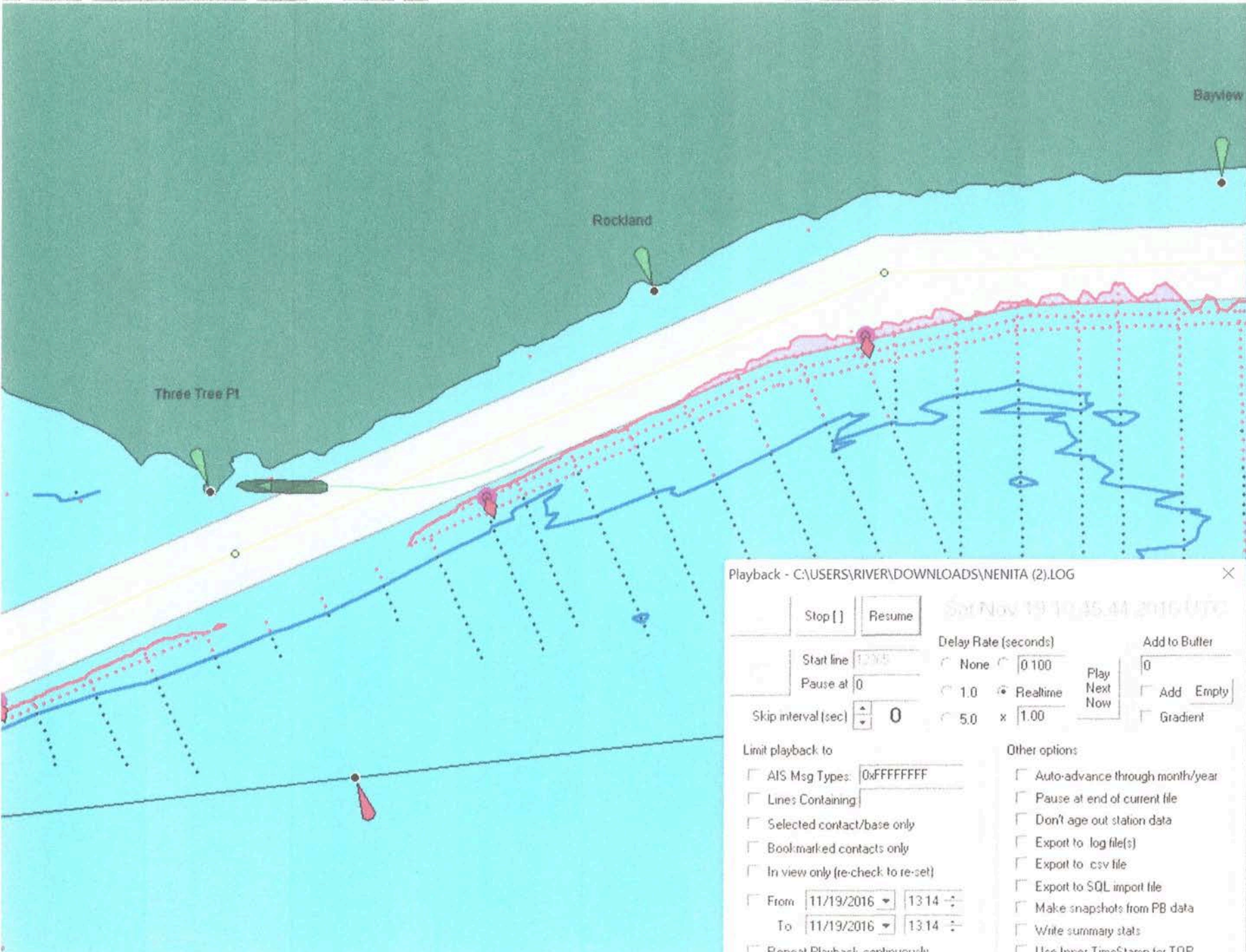
Playback - C:\USERS\RIVER\DOWNLOADS\NENITA (2).LOG

Playback control window for file C:\USERS\RIVER\DOWNLOADS\NENITA (2).LOG. Includes buttons for Stop and Resume, a Start line field (10/310), and a Pause at field (0). The Skip interval (sec) is set to 0. Delay Rate (seconds) is set to Realtime. Other options include checkboxes for 'Limit playback to' (AIS Msg Types, Lines Containing, Selected contact/base only, Bookmarked contacts only, In view only), 'Other options' (Auto-advance through month/year, Pause at end of current file, Don't age out station data, Export to log file(s), Export to .csv file, Export to SQL import file, Make snapshots from PB data, Write summary stats, Use Inner TimeStamp for TOP), and 'Add to Buffer' (Add, Empty, Gradient).

0.375' -- 42°T -- 0.56 nm (0.51 nm) -- ttg: 6m (6m)

8

SID 538
 SOG 4
 spkr
 HDG 2
 ROT R
 ROTI
 XTrk R 3
 From center line
 Cur reach Unn
 Next WPT 22 - Three T
 Track Dist
 Bearing 2
 TTG
 This
 Next > Course 2
 Status Rng/Brg ETA
 DGPS No SVs
 HDOP n/a Age
 Src vdm3 Mrb



Playback - C:\USERS\RIVER\DOWNLOADS\NENITA (2).LOG

Stop [] Resume

Start line 1205
Pause at 0

Skip interval (sec) 0

Delay Rate (seconds)
 None 0.100
 1.0 Realtime
 5.0 x 1.00

Add to Buffer
 Add Empty
 Gradient

Limit playback to
 AIS Msg Types: 0xFFFFFFFF
 Lines Containing
 Selected contact/base only
 Bookmarked contacts only
 In view only (re-check to re-set)
 From 11/19/2016 13:14
 To 11/19/2016 13:14
 Repeat Playback continuously

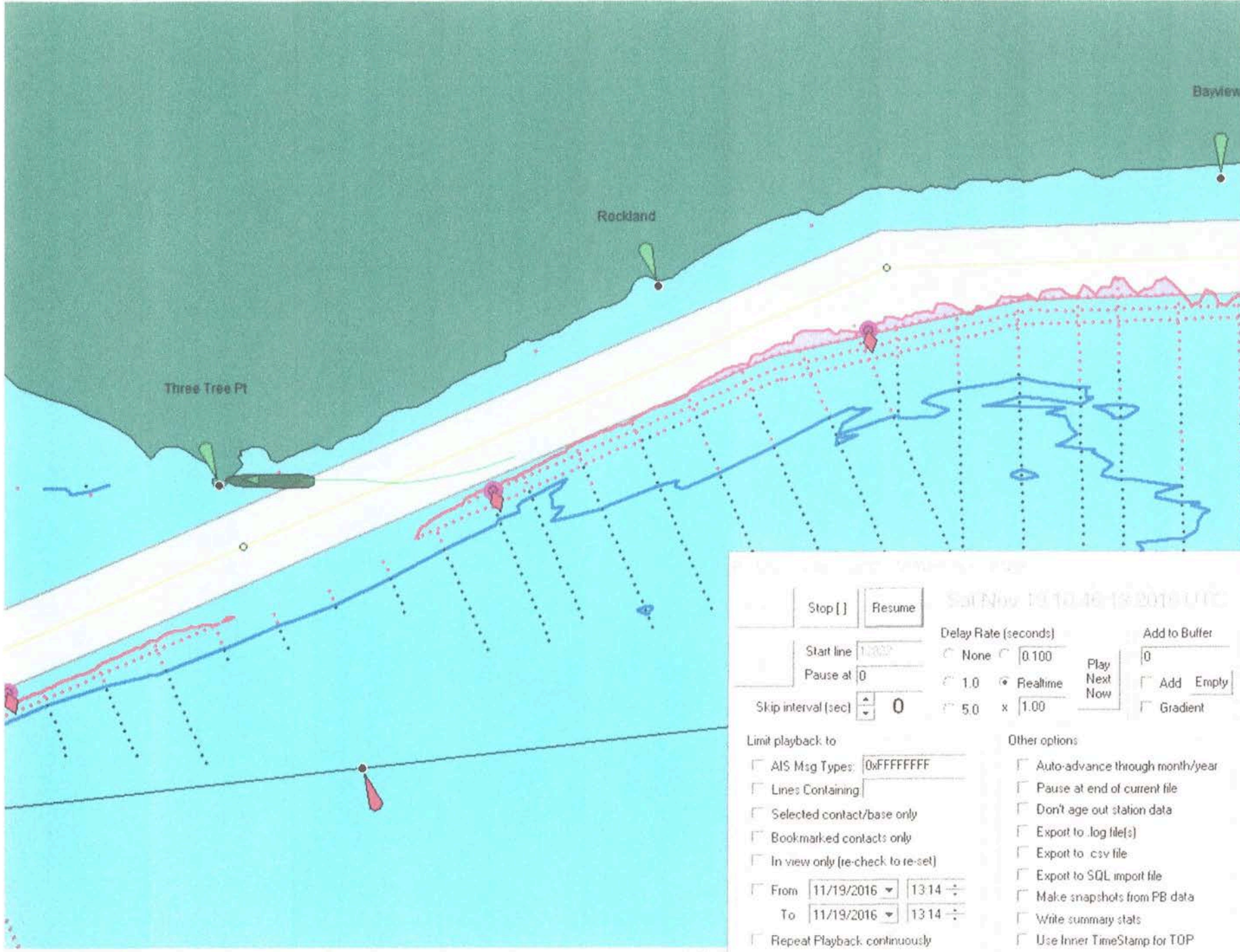
Other options
 Auto-advance through month/year
 Pause at end of current file
 Don't age out station data
 Export to log file(s)
 Export to csv file
 Export to SQL import file
 Make snapshots from PB data
 Write summary stats
 Use Inner TimeStamp for TOP

Options 0%

Standard Times

Waypoint N	Dis
Tongue Point	11.1 nm
Altoona Jetty	5.5 nm
Three Tree Pt	461 f
Skamokawa	
Westport Slo...	
Waterford No...	
Abemathy Pt	
Longview Bri...	
Collin Rock	
Columbia City	
Henric Lt 10	
Kelley Pt	

384' -- 49°T -- 0.66 nm (0.63 nm) -- ttg: 9m (9m)



Nenita	
SID	5380
SOG	3
spkr	2
HDG	2
ROT	R
ROTI	R
XTrk	R 4
From:	center line
Cur reach	Unre
Next WPT	22 - Three Tr
Track Dist	
Bearing	1
TTG	
This	
Next > Course	2
Status	Rng/Big ETA'
DGPS	No SVs
HDOP	n/a Age
Src	vdm2 Mib

Stop [] Resume

Start line 12000
Pause at 0

Skip interval (sec) 0

Delay Rate (seconds)
 None 0.100 Realtime 1.0 5.0 x 1.00

Add to Buffer
 Add Empty Gradient

Limit playback to
 AIS Msg Types: 0xFFFFFFFF
 Lines Containing
 Selected contact/base only
 Bookmarked contacts only
 In view only (re-check to re-set)
 From 11/19/2016 13:14
 To 11/19/2016 13:14
 Repeat Playback continuously

Other options
 Auto-advance through month/year
 Pause at end of current file
 Don't age out station data
 Export to .log file(s)
 Export to .csv file
 Export to SQL import file
 Make snapshots from PB data
 Write summary stats
 Use Inner TimeStamp for TOP

Options ... 02

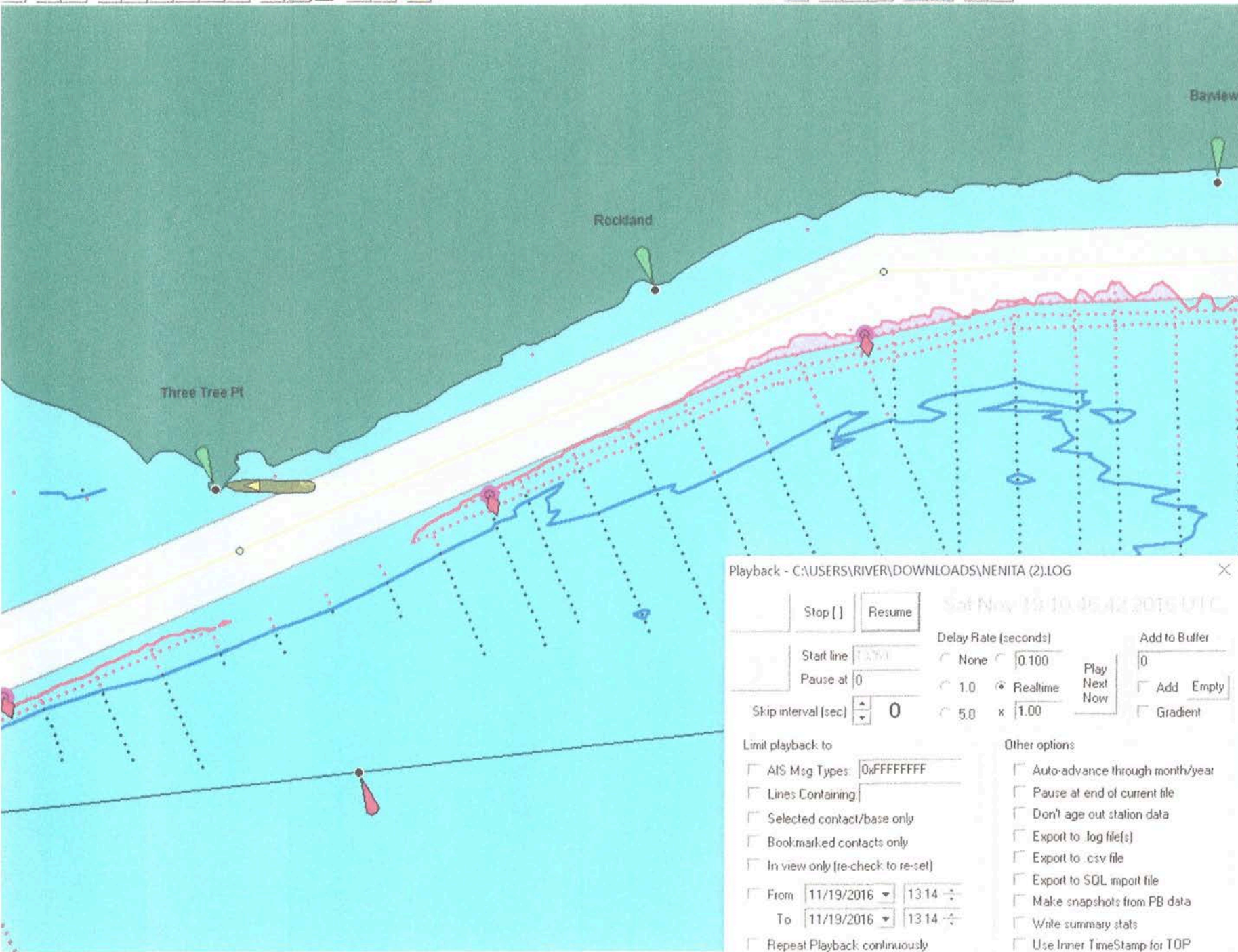
Standard Times

Waypoint N...	Dist
Tongue Point	11.1 nm
Altoona Jetty	5.4 nm
Three Tree Pt	308 ft
Skamokawa	
Westport Slo...	
Waterford No...	
Abemathy Pt	
Longview Bri...	
Coffin Rock	
Columbia City	
Henri Lt 10	
Kelley Pt	

10

Nenita

SID 5380
 SOG 0
 spkr
 HDG 2
 ROT R
 ROTI R
 XTrk R 4
 From center line
 Cur reach Unna
 Next WPT 22 - Three Tr
 Track Dist
 Bearing 1
 TTG
 This Course 2
 Status Rng/Brg ETA
 DGPS No SVs
 HDOP n/a Age
 Src vdm0 Mbr



Playback - C:\USERS\RIVER\DOWNLOADS\NENITA (2).LOG

Stop [] Resume

Sat Nov 19 10:45:42 2016 UTC

Start line 13:50
 Pause at 0

Skip interval (sec) 0

Delay Rate (seconds)
 None 0.100 Realtime 1.0 5.0 x 1.00

Add to Buffer
 Add Empty Gradient

Limit playback to
 AIS Msg Types: 0xFFFFFFFF
 Lines Containing
 Selected contact/base only
 Bookmarked contacts only
 In view only (re-check to re-set)
 From 11/19/2016 13:14 To 11/19/2016 13:14
 Repeat Playback continuously

Other options
 Auto-advance through month/year
 Pause at end of current file
 Don't age out station data
 Export to log file(s)
 Export to csv file
 Export to SQL import file
 Make snapshots from PB data
 Write summary stats
 Use Inner TimeStamp for TOP

Options 02

Waypoint N...	Dist
Tongue Point	11.1 nm
Altoona Jetty	5.4 nm
Three Tree Pt	334 ft
Skamokawa	
Westport Slo...	
Waterford No...	
Abernathy PT	
Longview Br...	
Collin Rock	
Columbia City	
Henric Lt 10	
Kelley Pt	